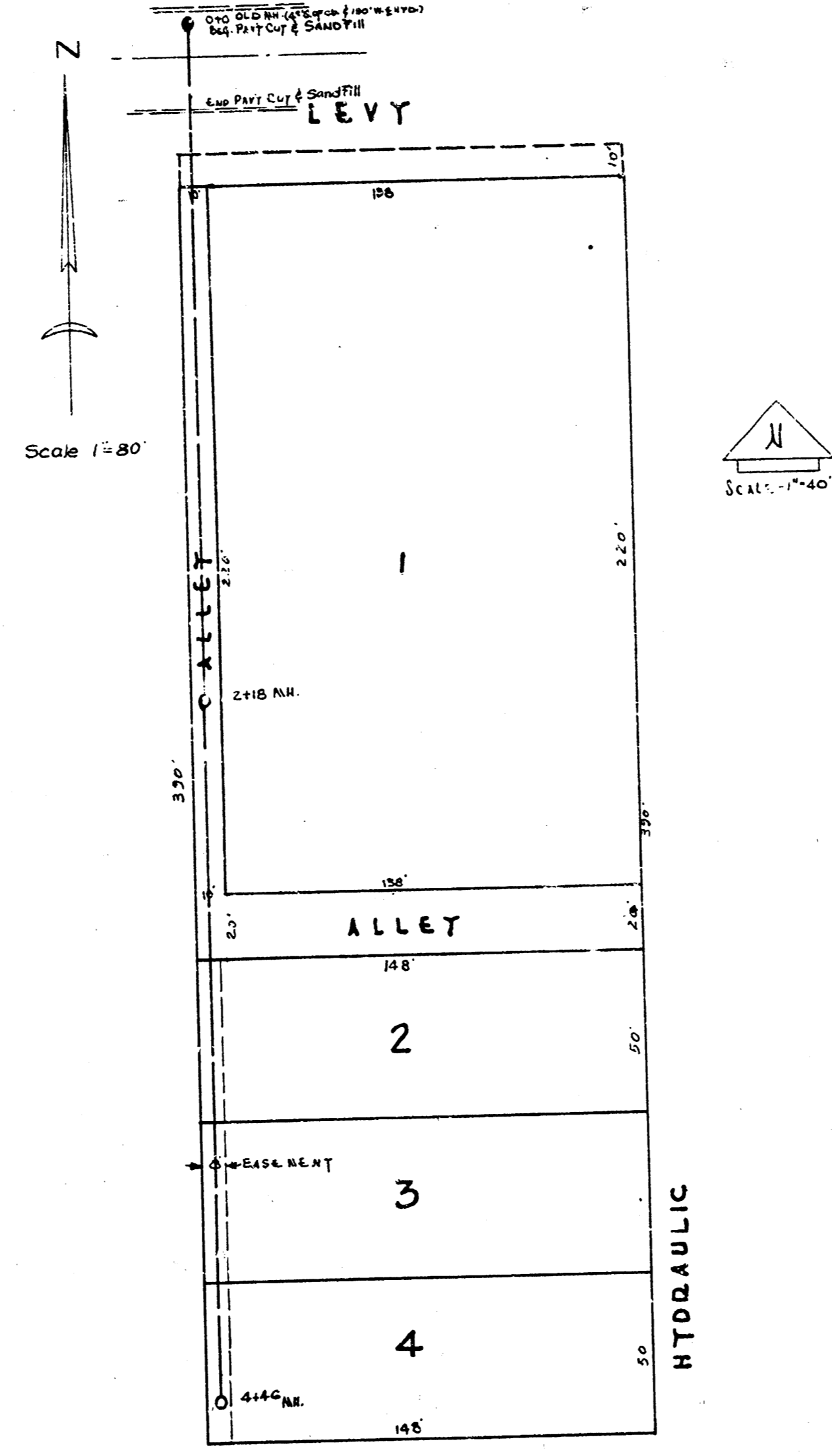
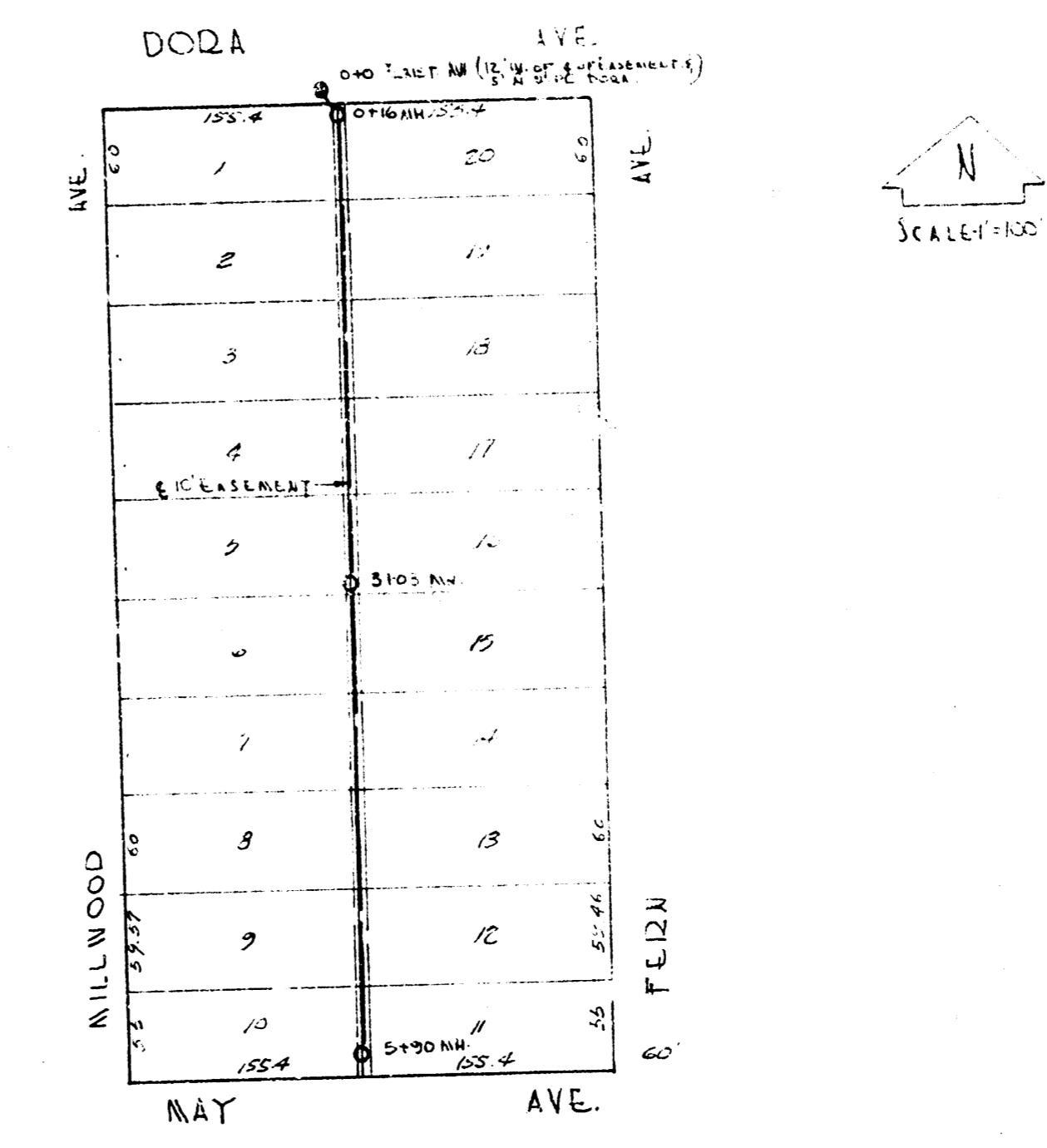


B.M. 123.36 S.E. cor. step House # 2002 North Minneapolis.



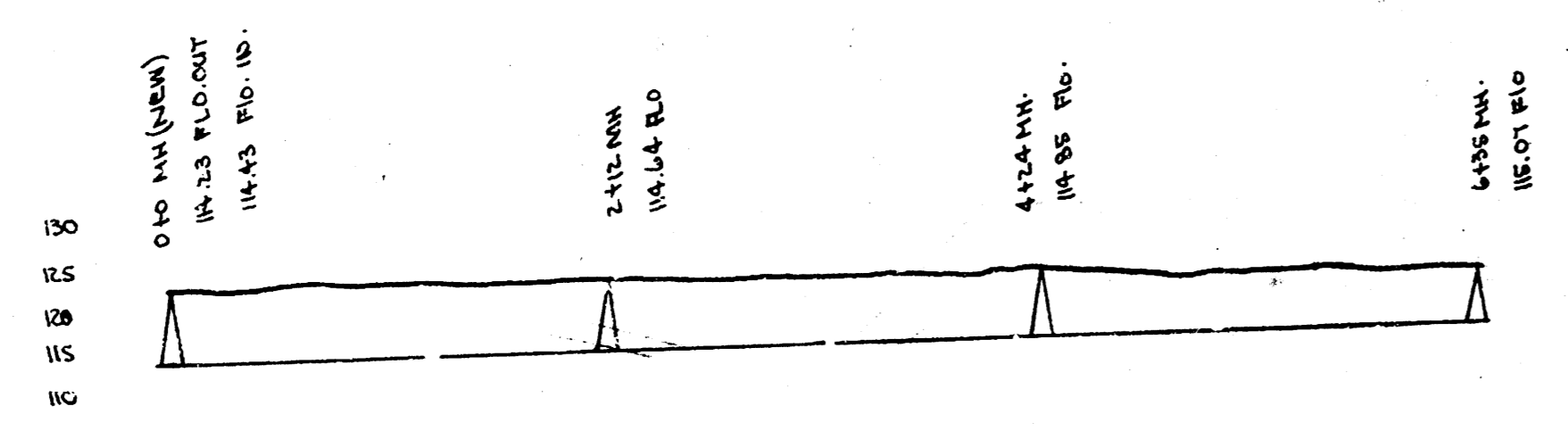
D.N. 100.28 "T" IN TROY TIRE HYD. SW. COR. HYD. & LEVY.

LAT. 13, DIST. B, SS* 20

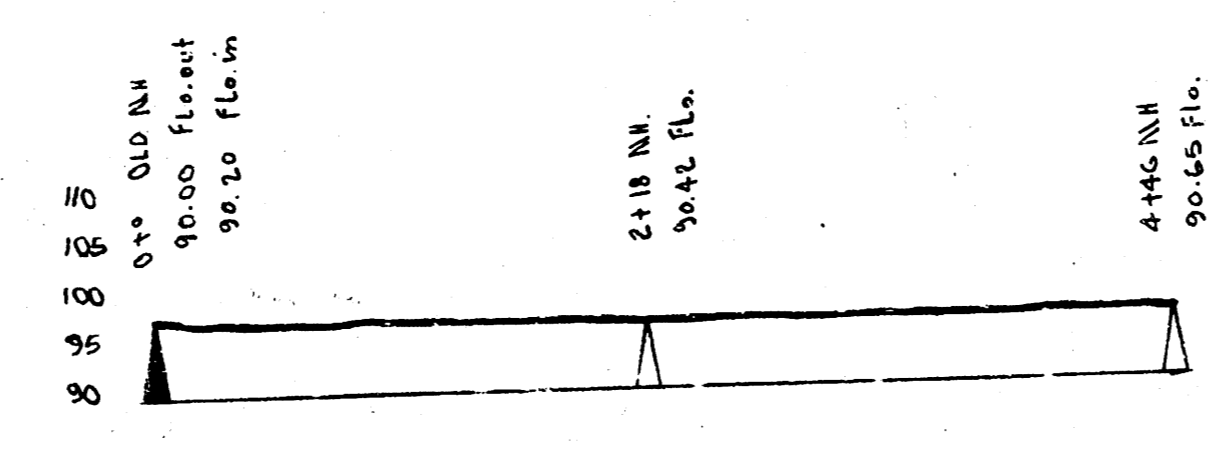


D.N. 103.47 "G" IN GLOBE SW. COR. N.S. DOCK & E.L. MILLWOOD

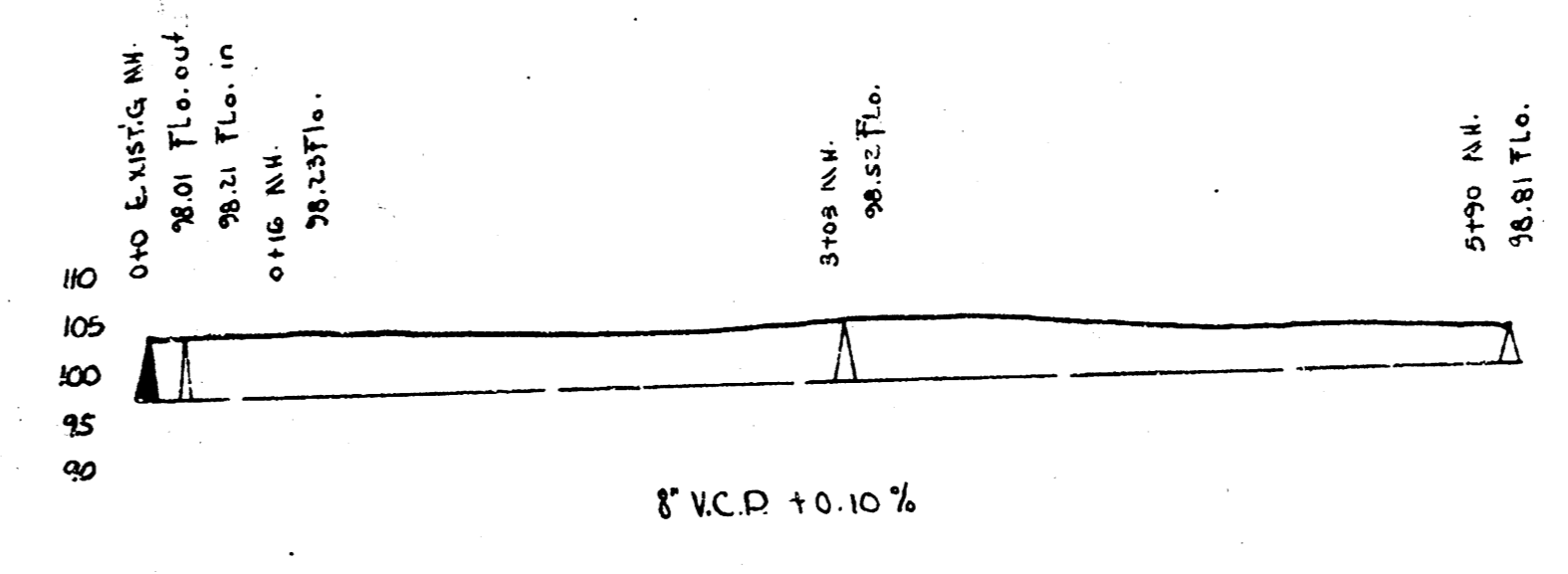
LAT. I, DIST. E, SS* 21



10.10% 8' V.C.P.



LAT. 13, DIST. B, SS* 20



LAT. 13, DIST. B, SS* 20
 LAT. I, DIST. E, SS* 21
 CITY OF WICHITA, KANSAS
 L.K. WHITE City Engineer
 DATE 12-8-49 Proj. No.