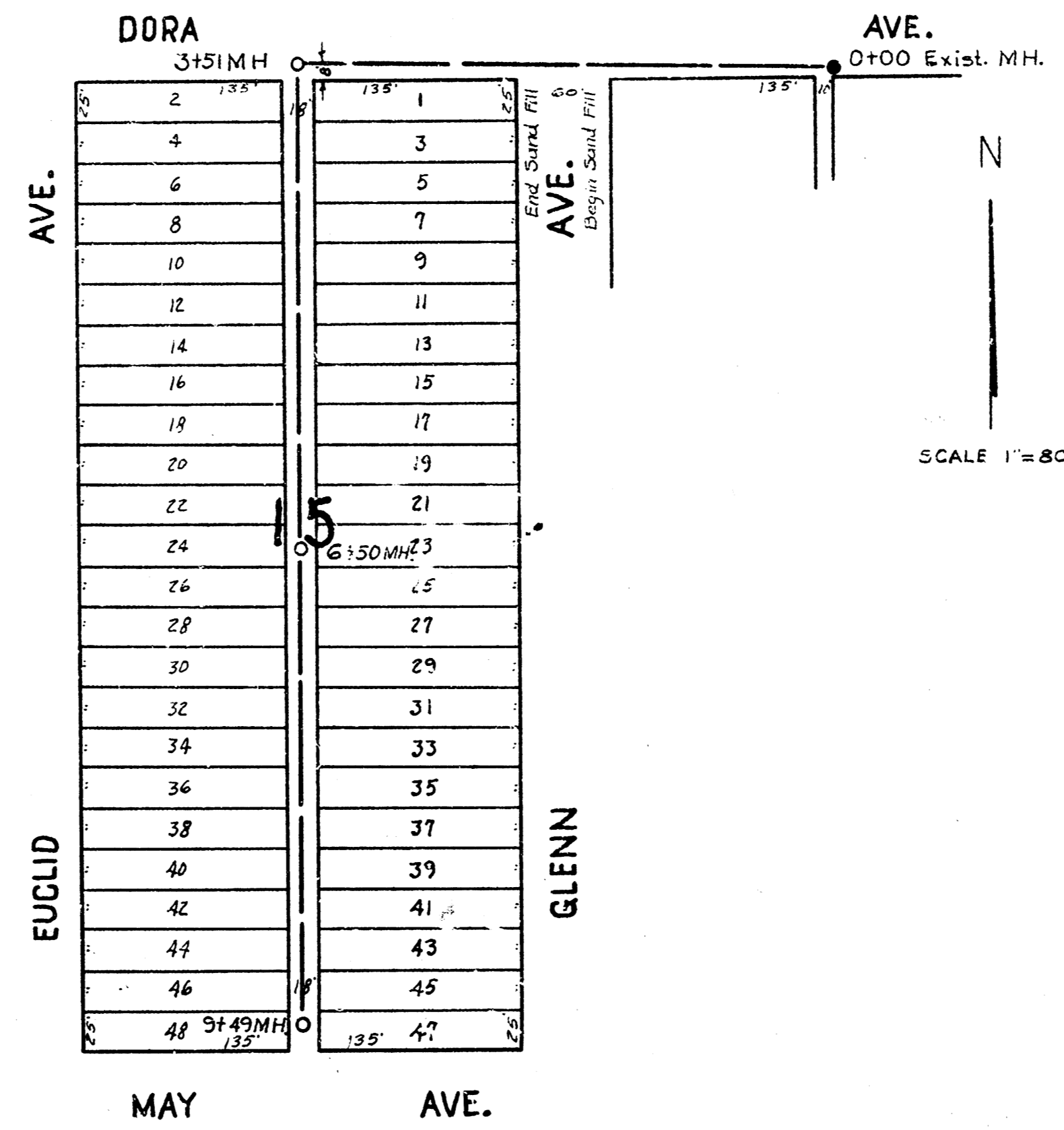
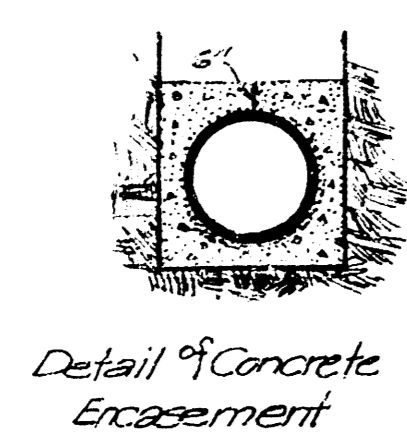
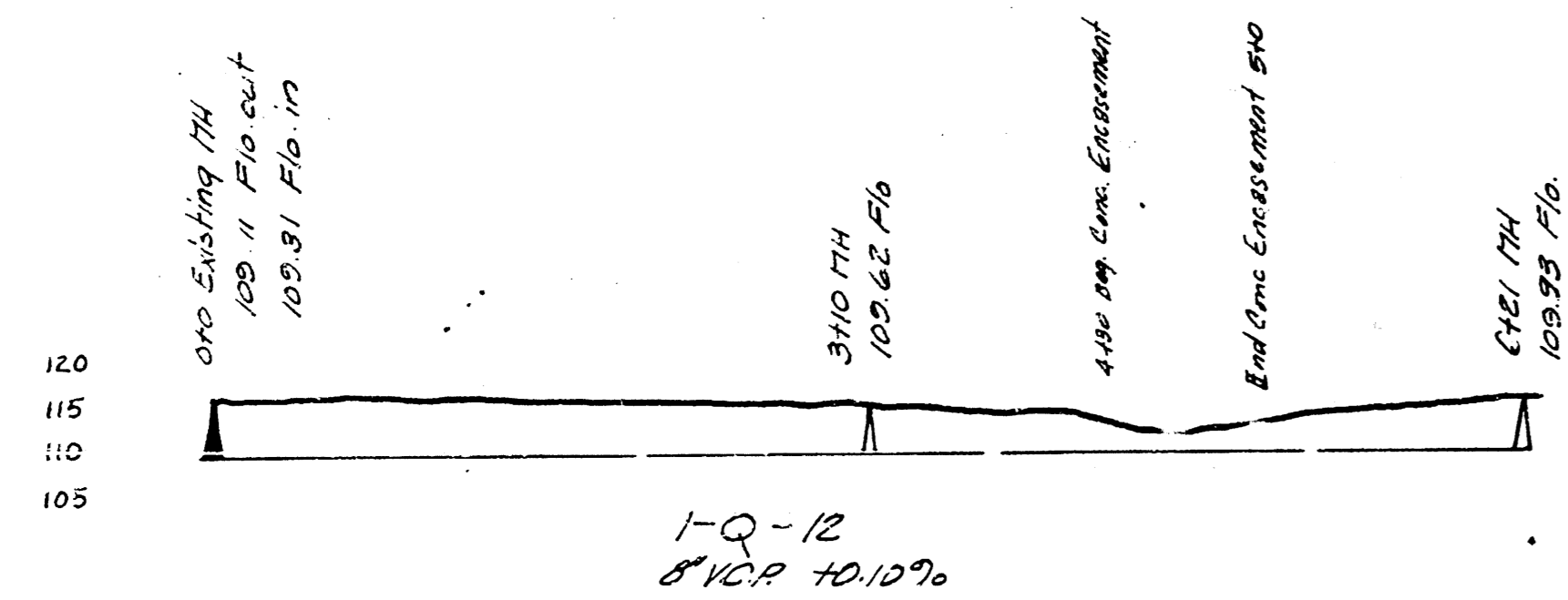


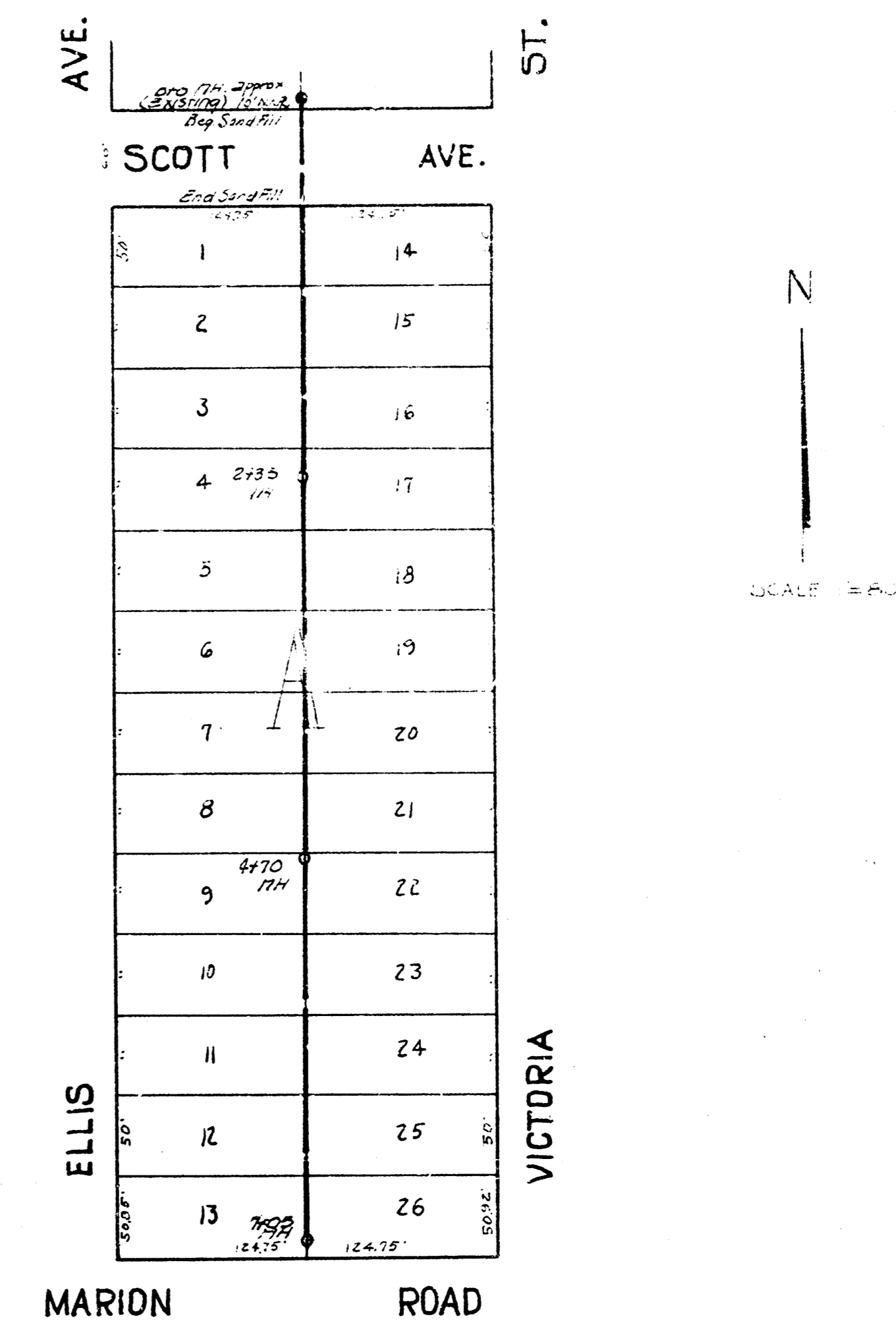
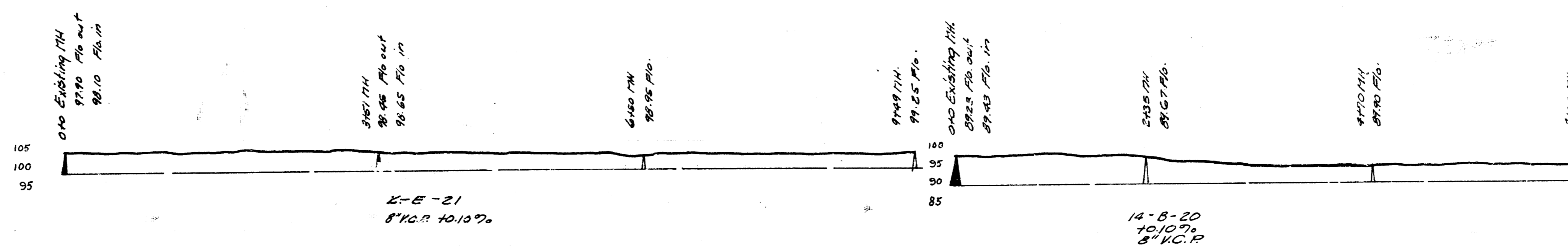
LAT. 1, DIST. Q, S.S. #12
PROJECT NO. C 20-17

B.M. 118.97 N.W. Cor. Conc. Porch Ho. # 1114 N. Ash.
B.M. 115.83 East Rim M.H. 0+00.



LAT. K, DIST. E, S.S. #21
PROJECT NO. C 20-14

B.M. 103.02 "G" in Globe E.cb. Vine N.L. May.



LAT. 14, DIST. B, S.S. #20
PROJECT NO. C 29-63

B.M. 99.63 "T" in F.P. Greenwood & Pawnee.
B.M. 97.26 Mc. Rim M.H. at Sta. 0+00.

Lat. 1, Dist. Q, S.S. #12 - Lat. K, Dist. E, S.S. #21
Lat. 14, Dist. B, S.S. #20
City of Wichita, Kansas
L. M. White City Engineer
Date 3-27-50 Proj. Nos. C20-17
C20-14
C29-63