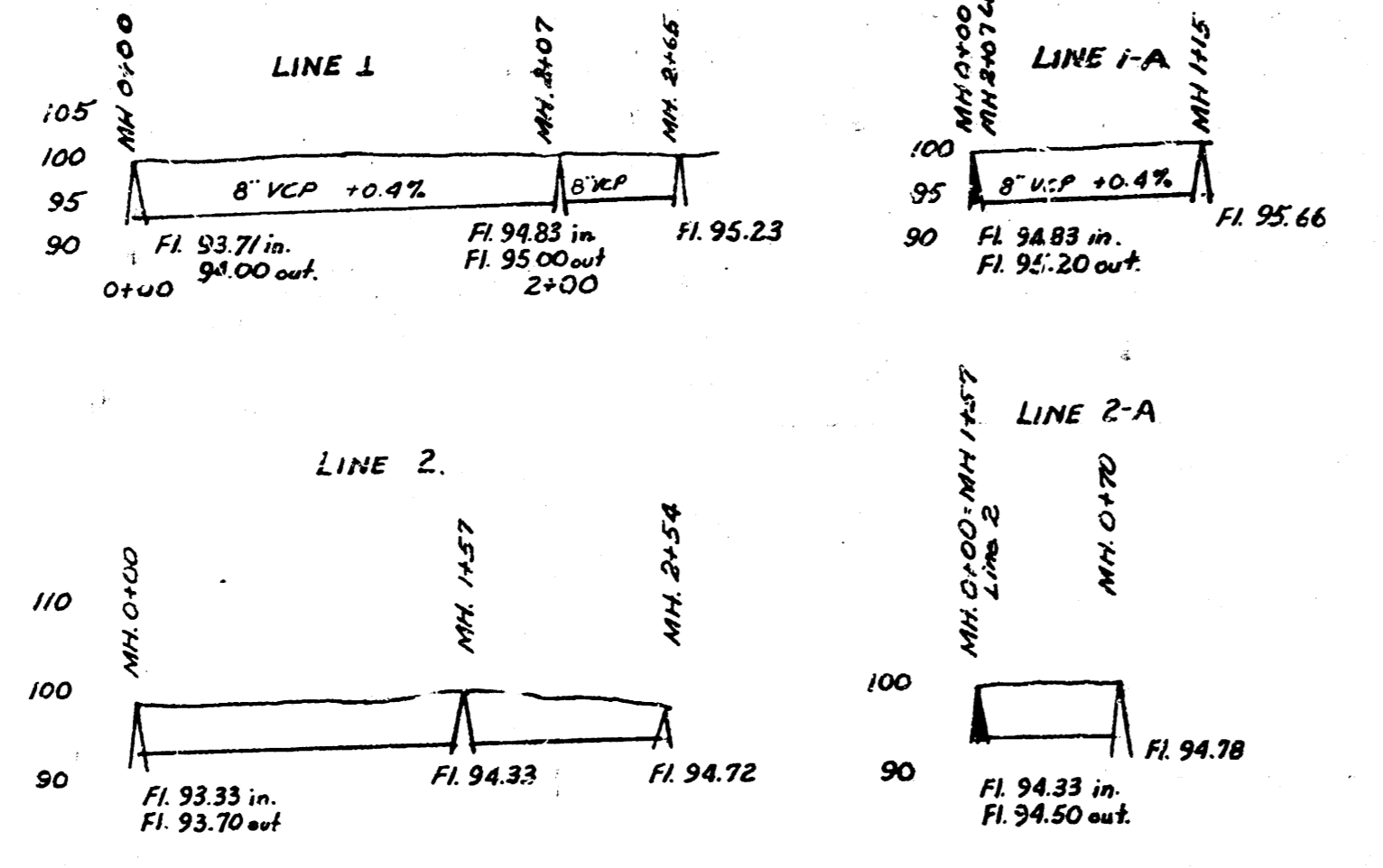
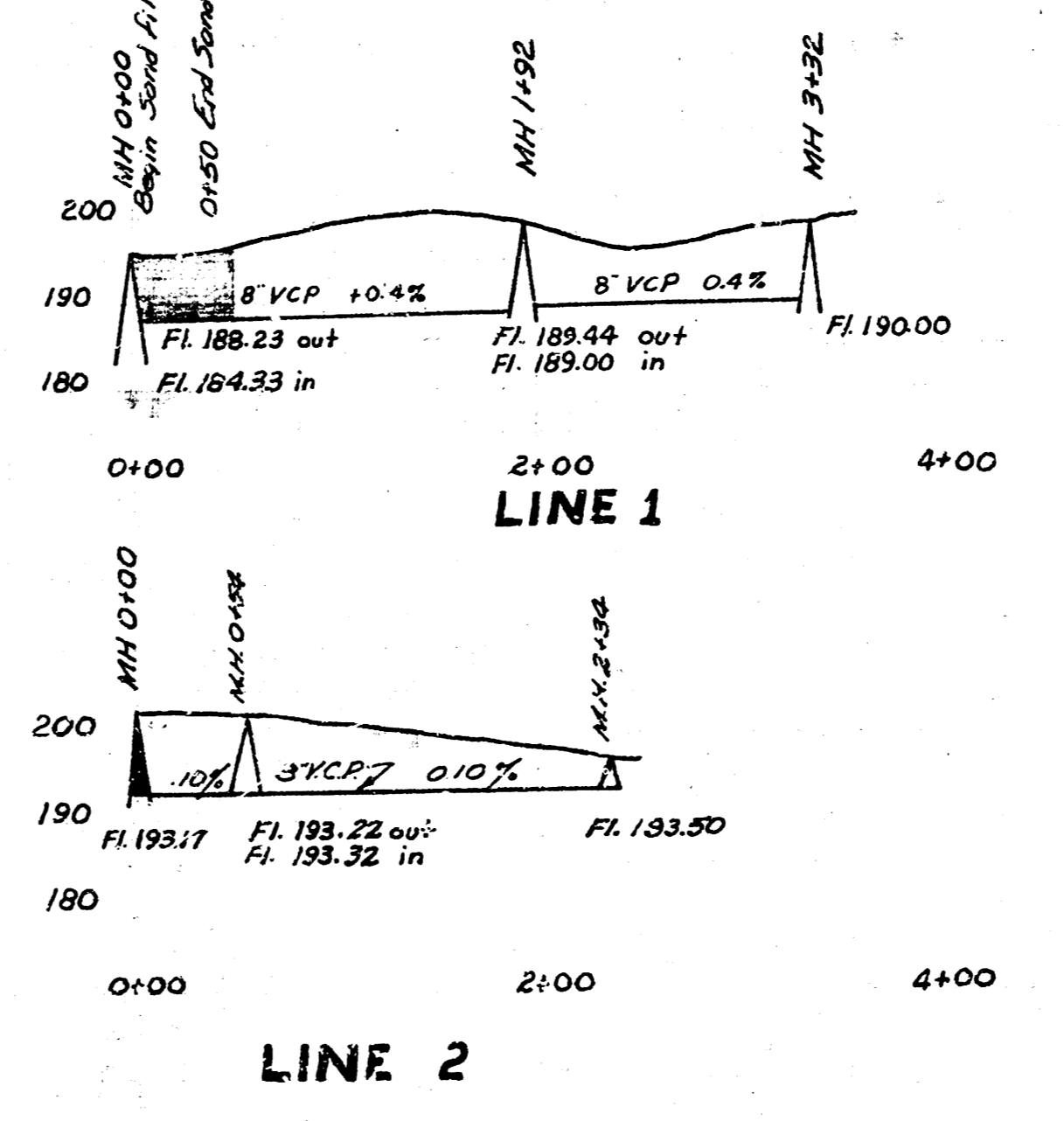
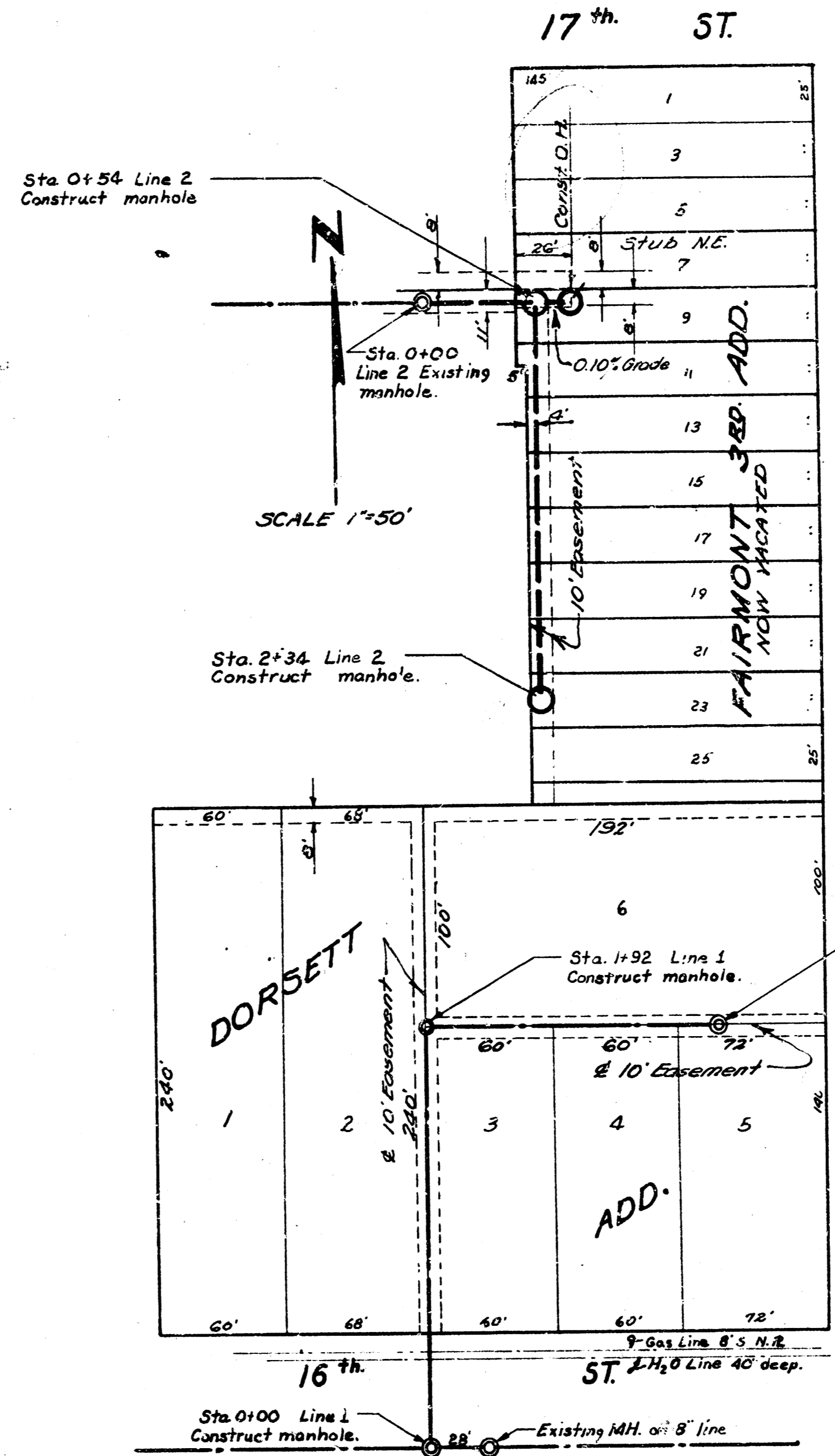


BM 102.03 "x" near BK. W.K. NE. cor. Goldf Skinner.



LAT. 23 DIST. B. SS. #20  
 CITY OF WICHITA KANSAS  
 L.K. WHITE CITY ENGINEER  
 PROJ. NO. (Private Job)  
 SEPT. 20, 1961



NOTE BOOK NO. H-1 & E-2

BM "R" in Ritchie N. Curb  
 16th E. Line Gentry El. 201.60

SCALE 1" = 80' Horiz  
 1" = 20' Vert

LAT. 21 DIST. E. MAIN 12  
 Bet. 16th & 17th 145 W. Gentry  
 CITY OF WICHITA, KANSAS  
 L.K. WHITE City Engineer  
 Aug. 1951 Proj. No. C.21-21.