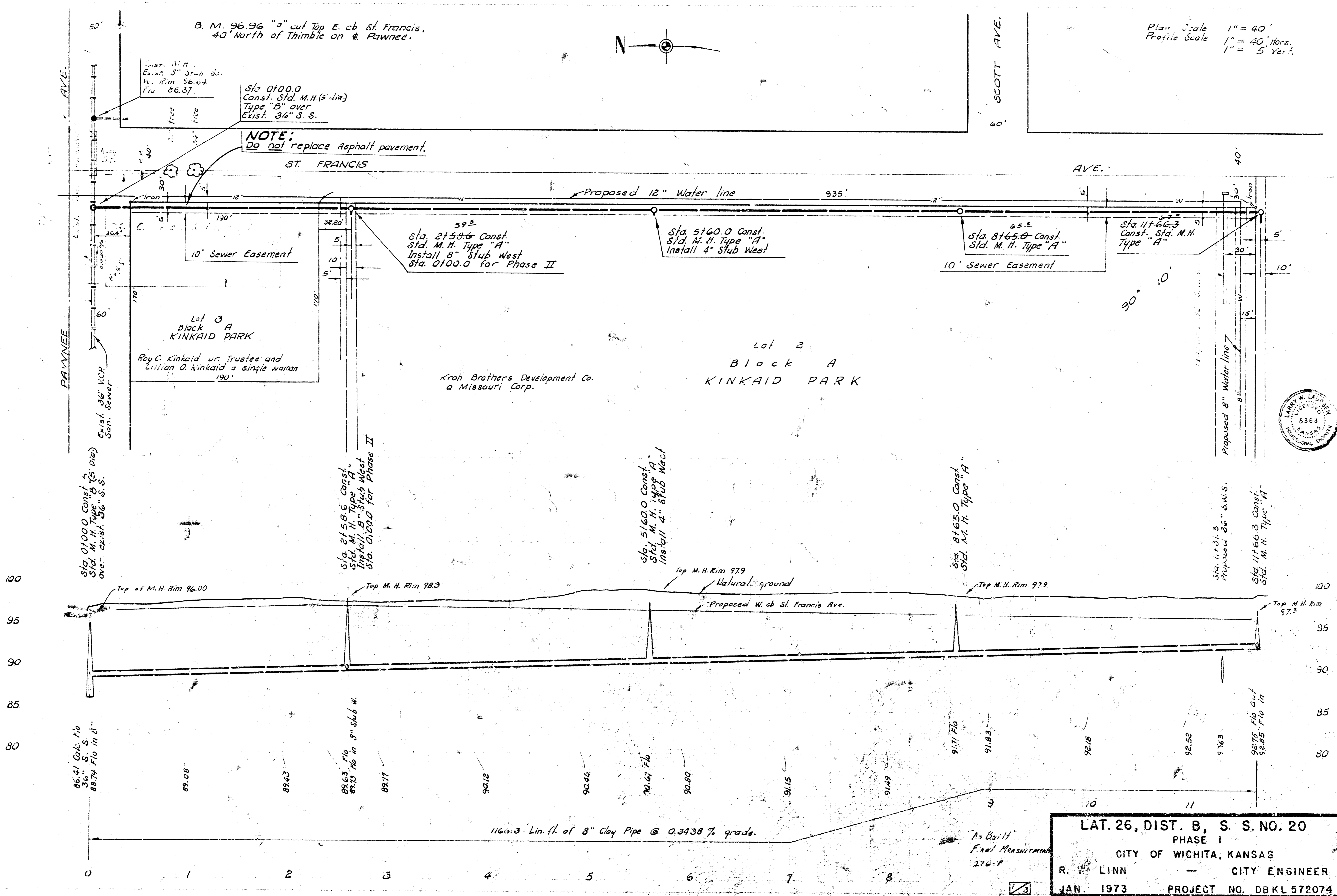
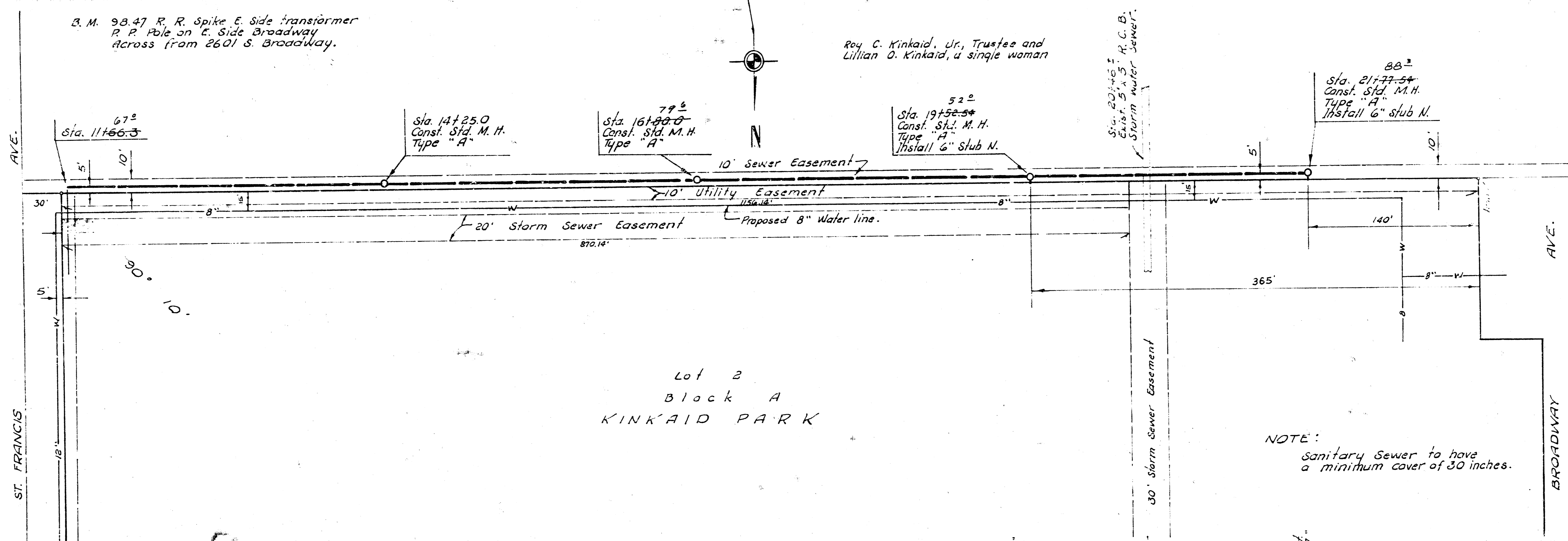


U. 44' 18"

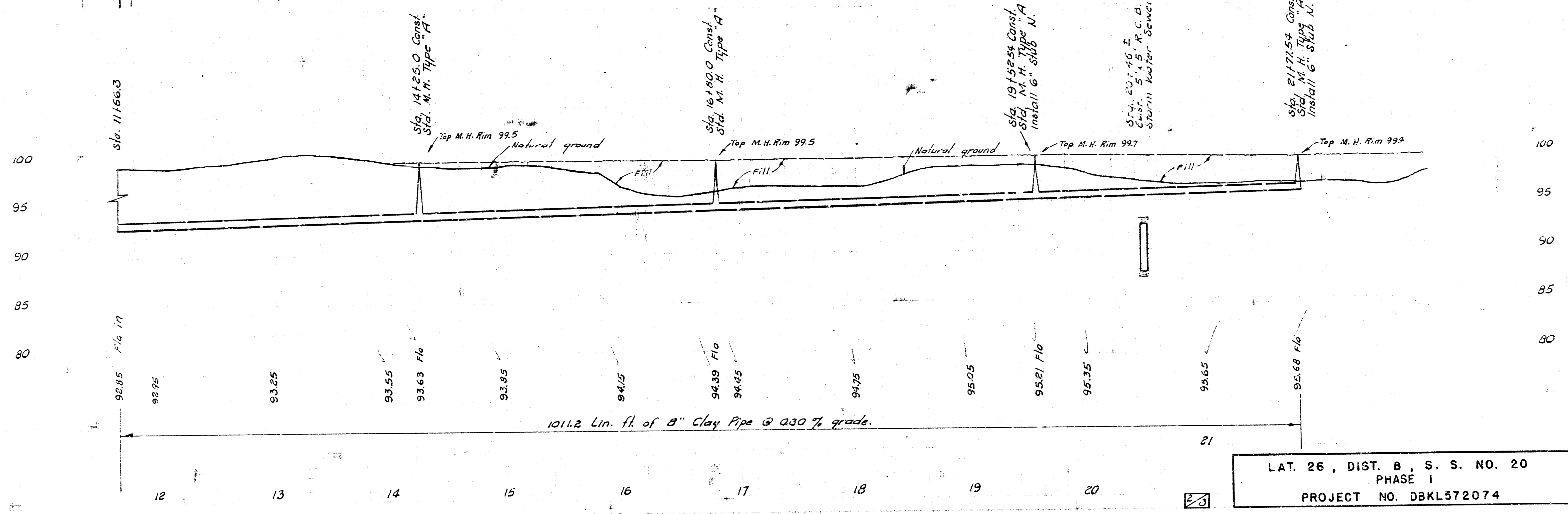
205



LAT. 26, DIST. B, S. S. NO. 20
 PHASE I
 CITY OF WICHITA, KANSAS
 R. W. LINN - CITY ENGINEER
 JAN. 1973 PROJECT NO. DBKL 572074



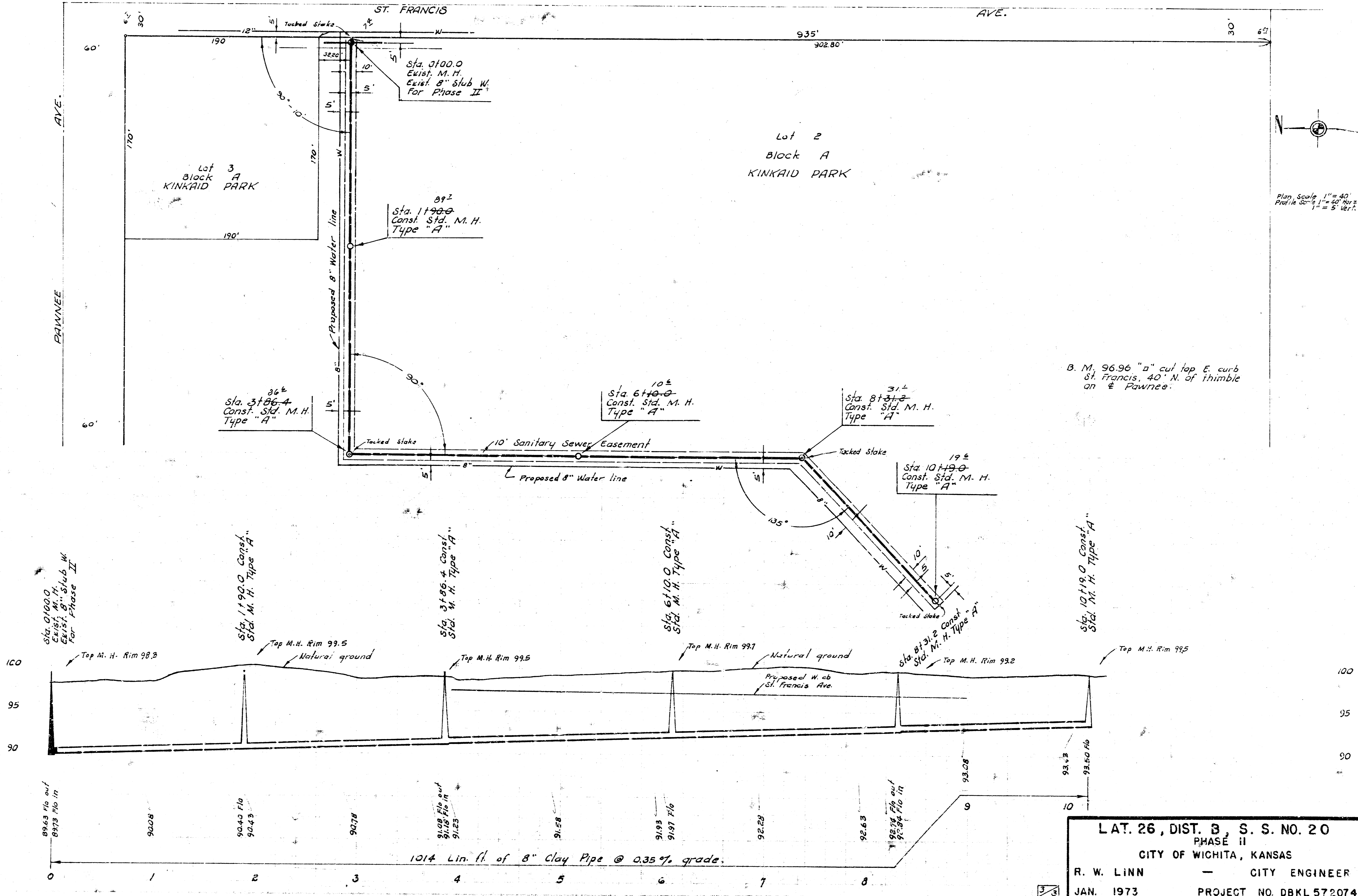
NOTE:
Sanitary Sewer to have
a minimum cover of 30 inches.



LAT. 26, DIST. 8, S. S. NO. 20
PHASE I
PROJECT NO. DBKL572074

J. R. W.

205



LAT. 26, DIST. 3, S. S. NO. 20
 PHASE II
 CITY OF WICHITA, KANSAS
 R. W. LINN — CITY ENGINEER
 JAN. 1973 PROJECT NO. DBKL 572074