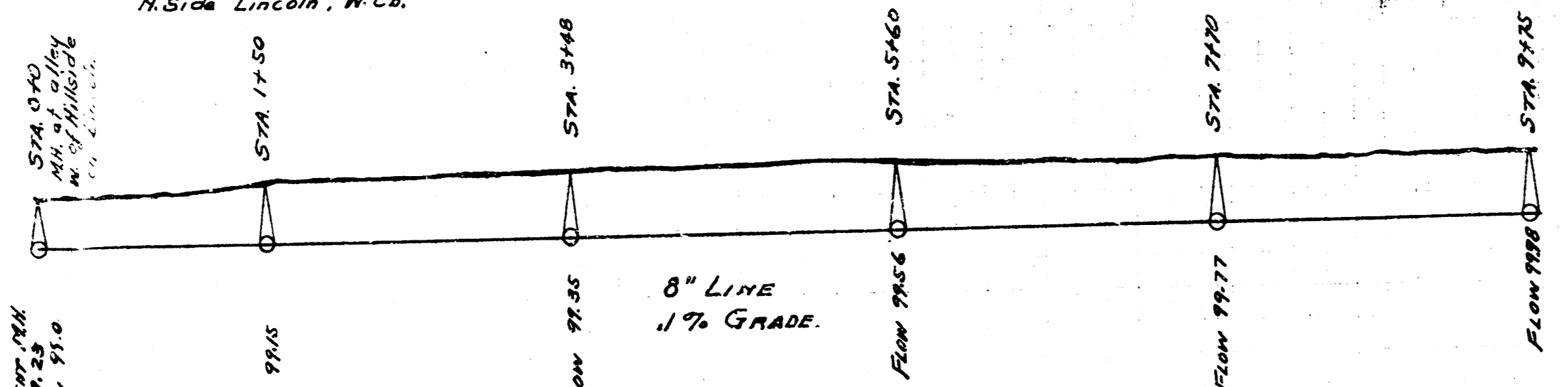
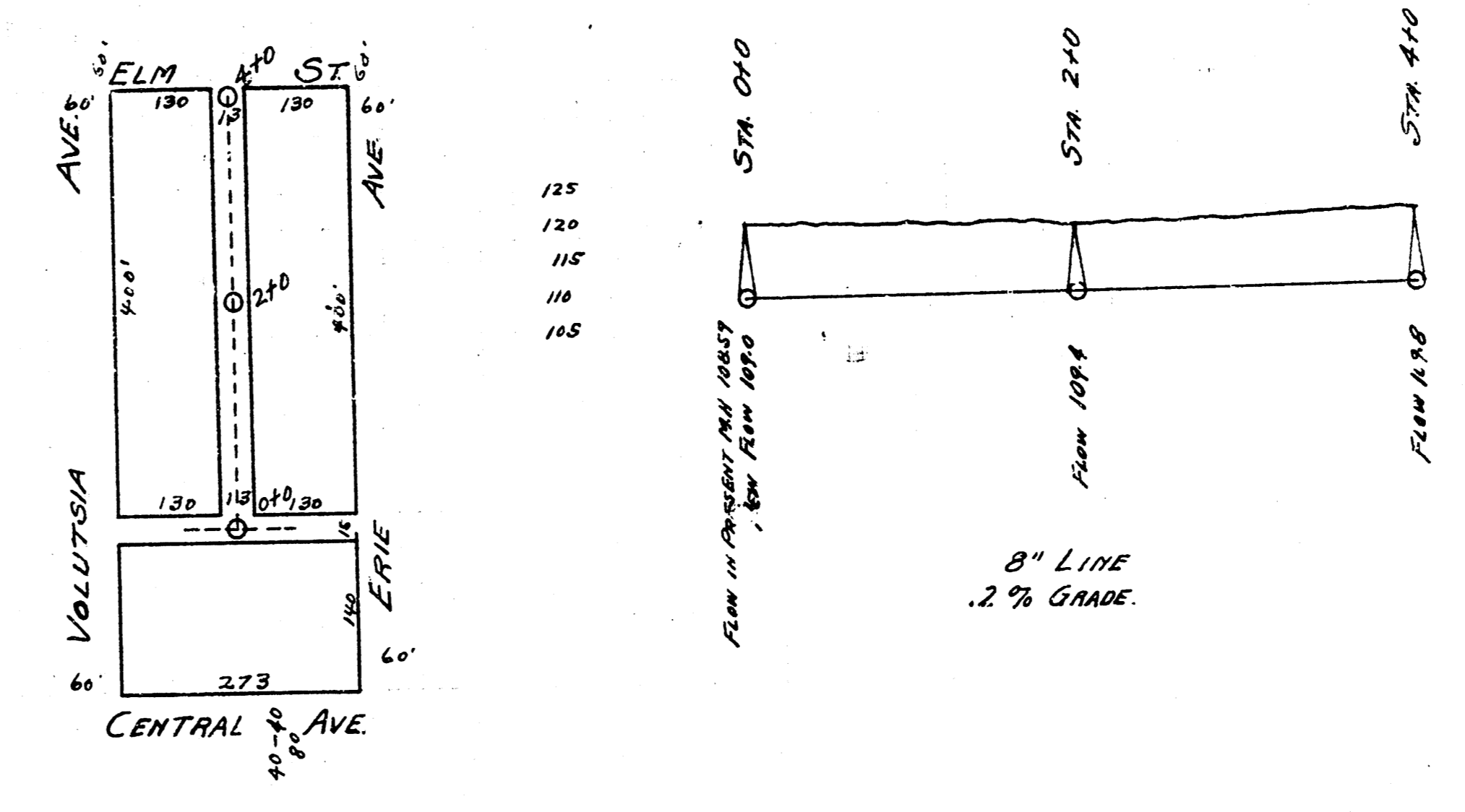


B.M. 107.80 B. in Beckridge N. Side Lincoln, W.C.B.

120
115
110
105
100
95

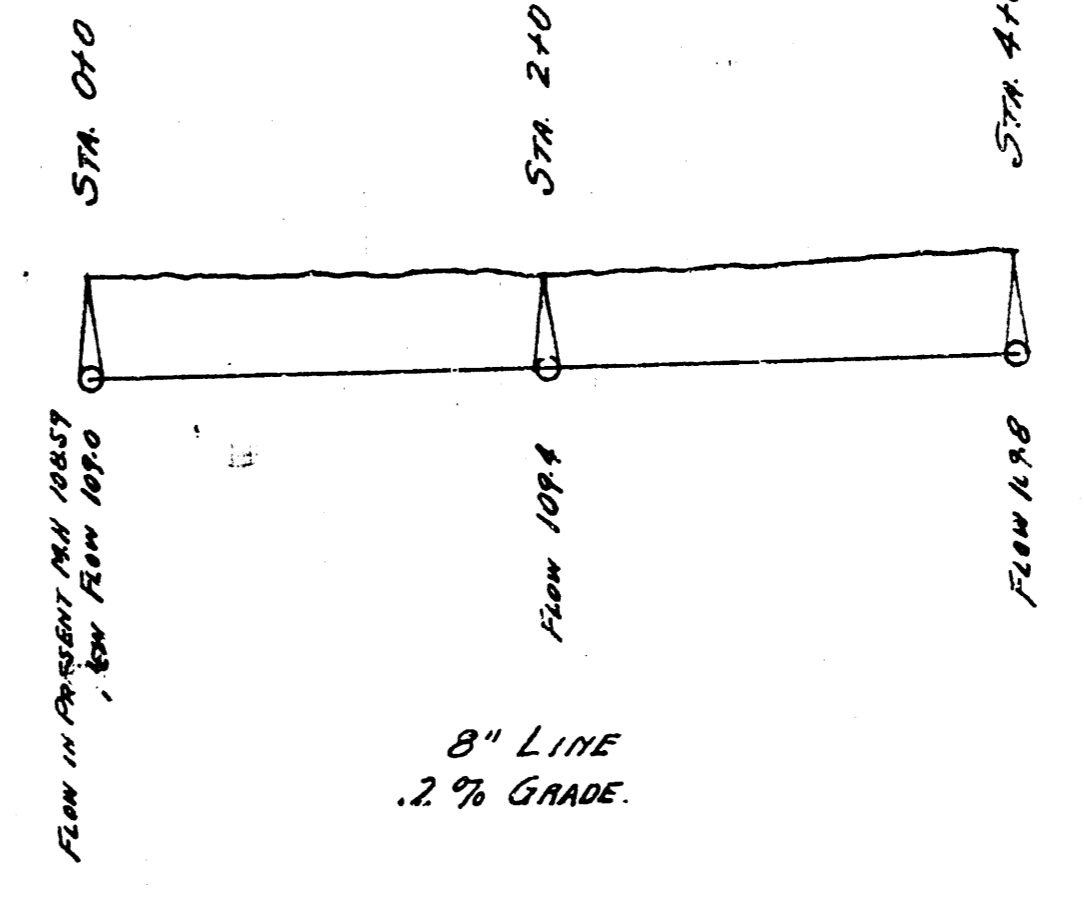


LAT. A., DIST. 4.
S.S. No. 12



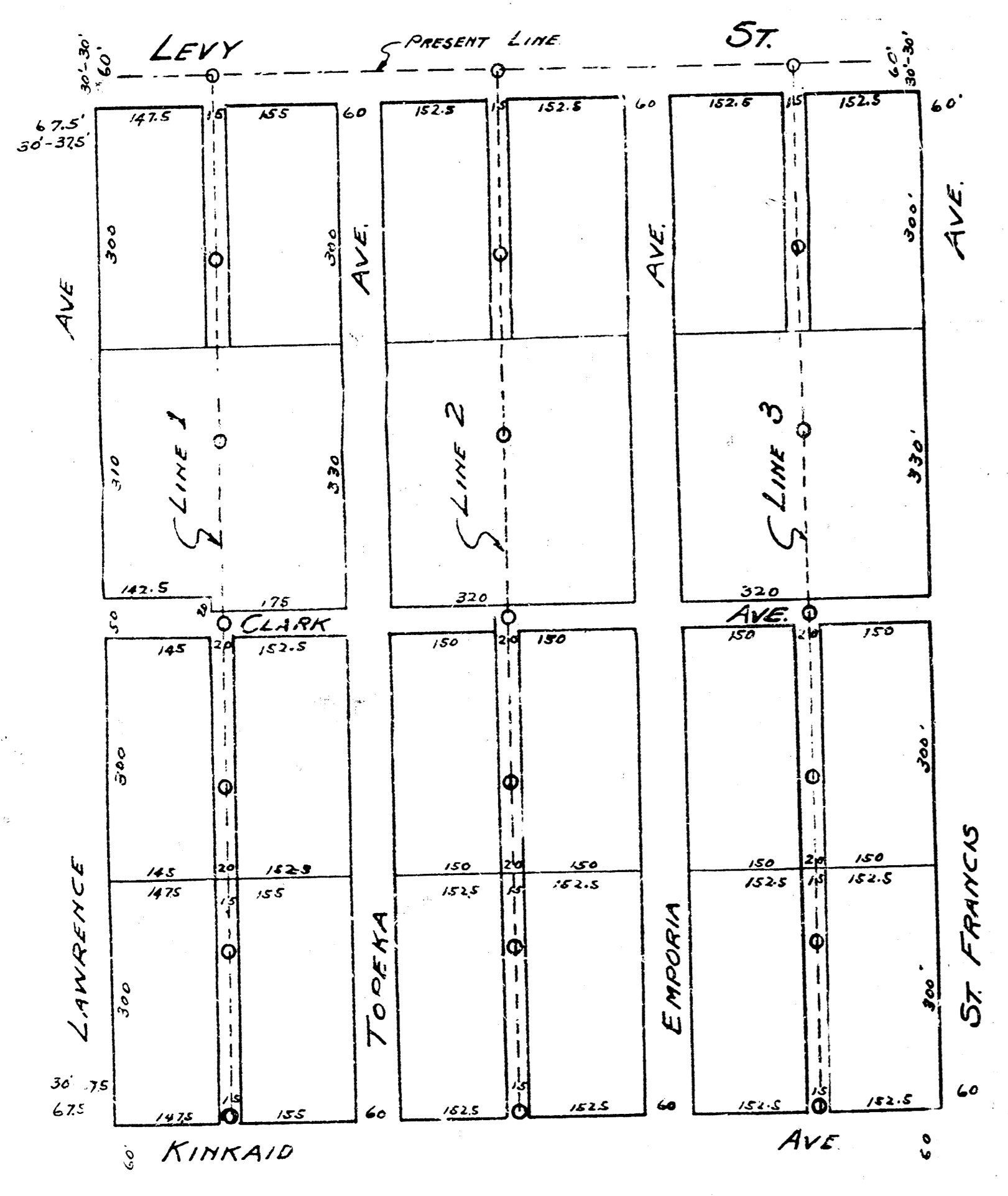
B.M. 122.73 K in Kensler, CP. Walk W. SW. cor. Volutria & Central.

125
120
115
110
105



LAT. R., DIST. D.,
S.S. No. 12

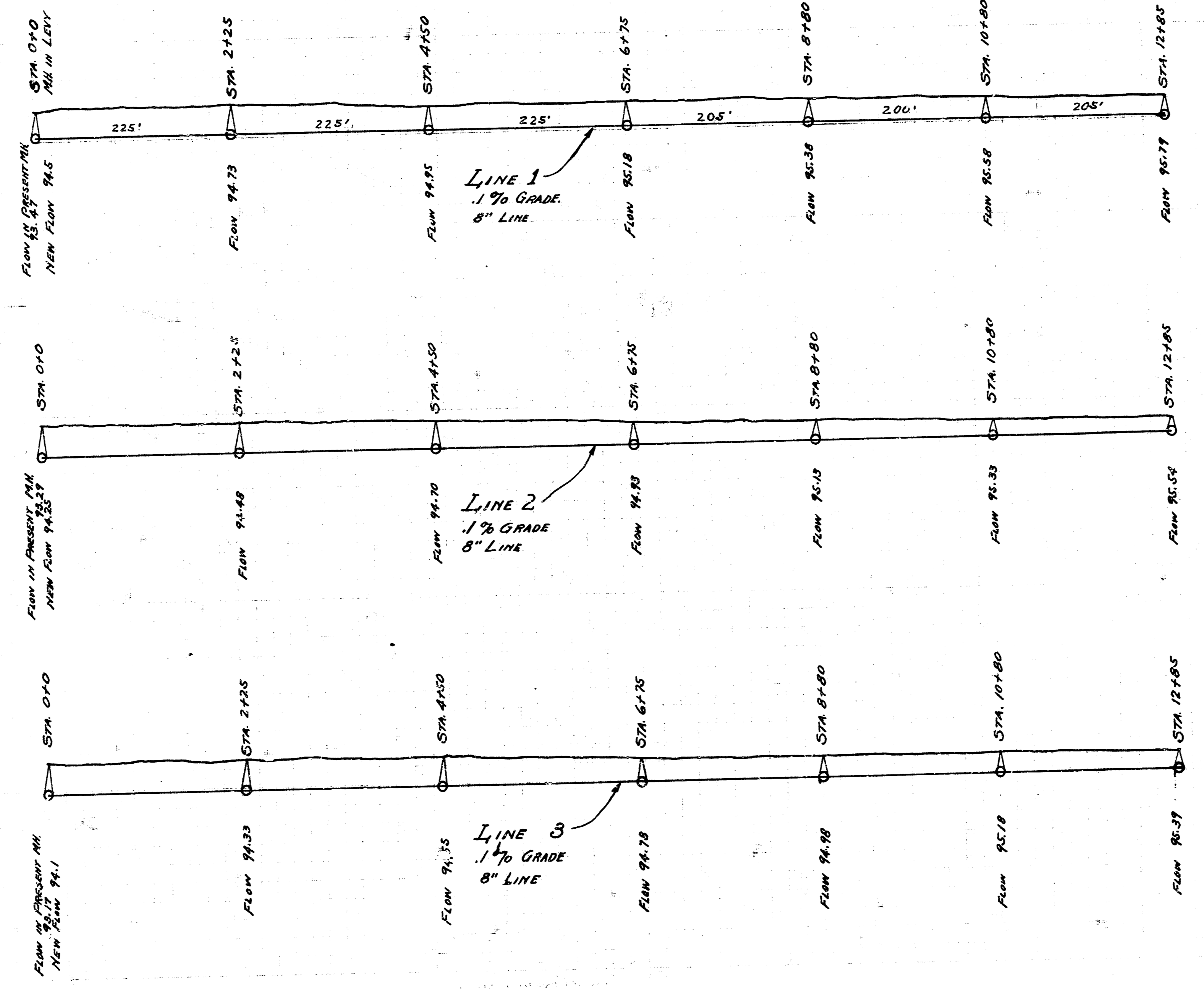
B.M. 99.60 Stand. RW. on Lawrence & Levy.



110
105
100
95
90

110
105
100
95
90

110
105
100
95
90



LAT. 11, DIST. C.,
S.S. No. 20.