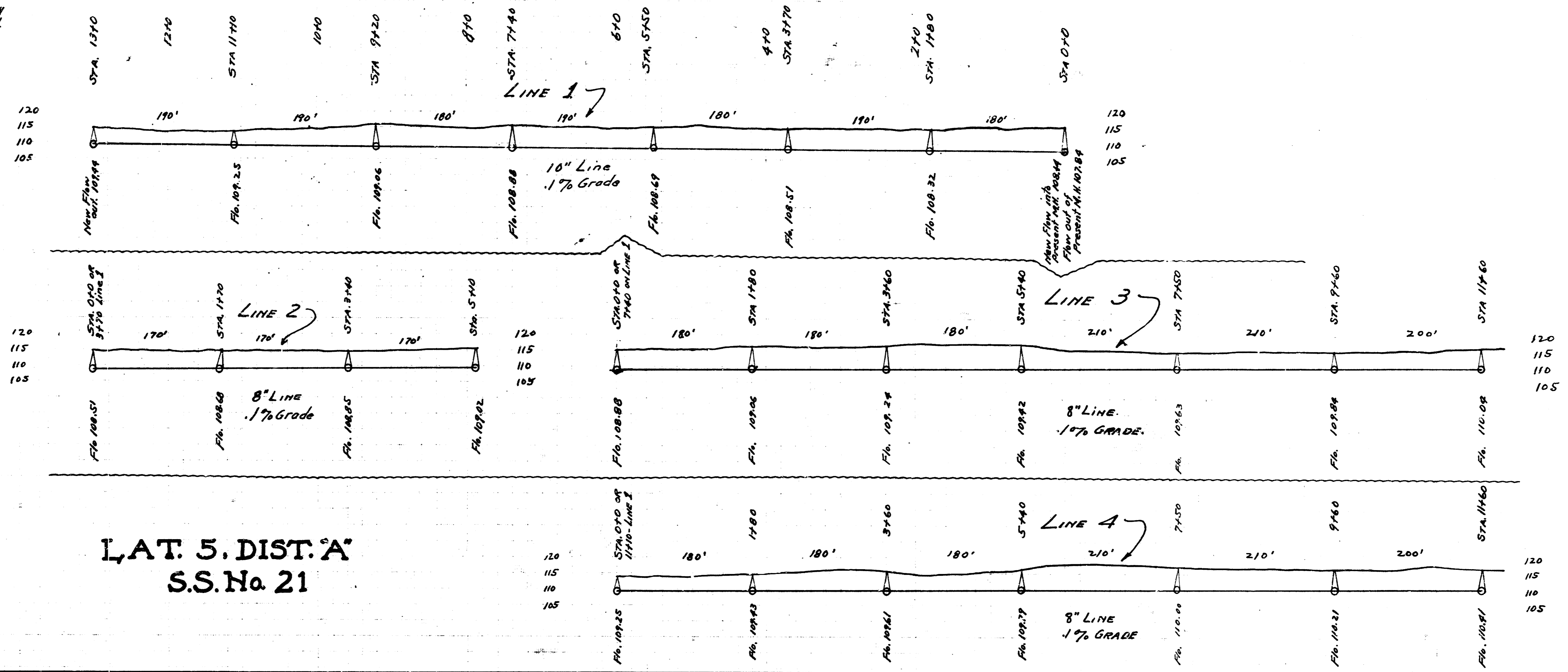
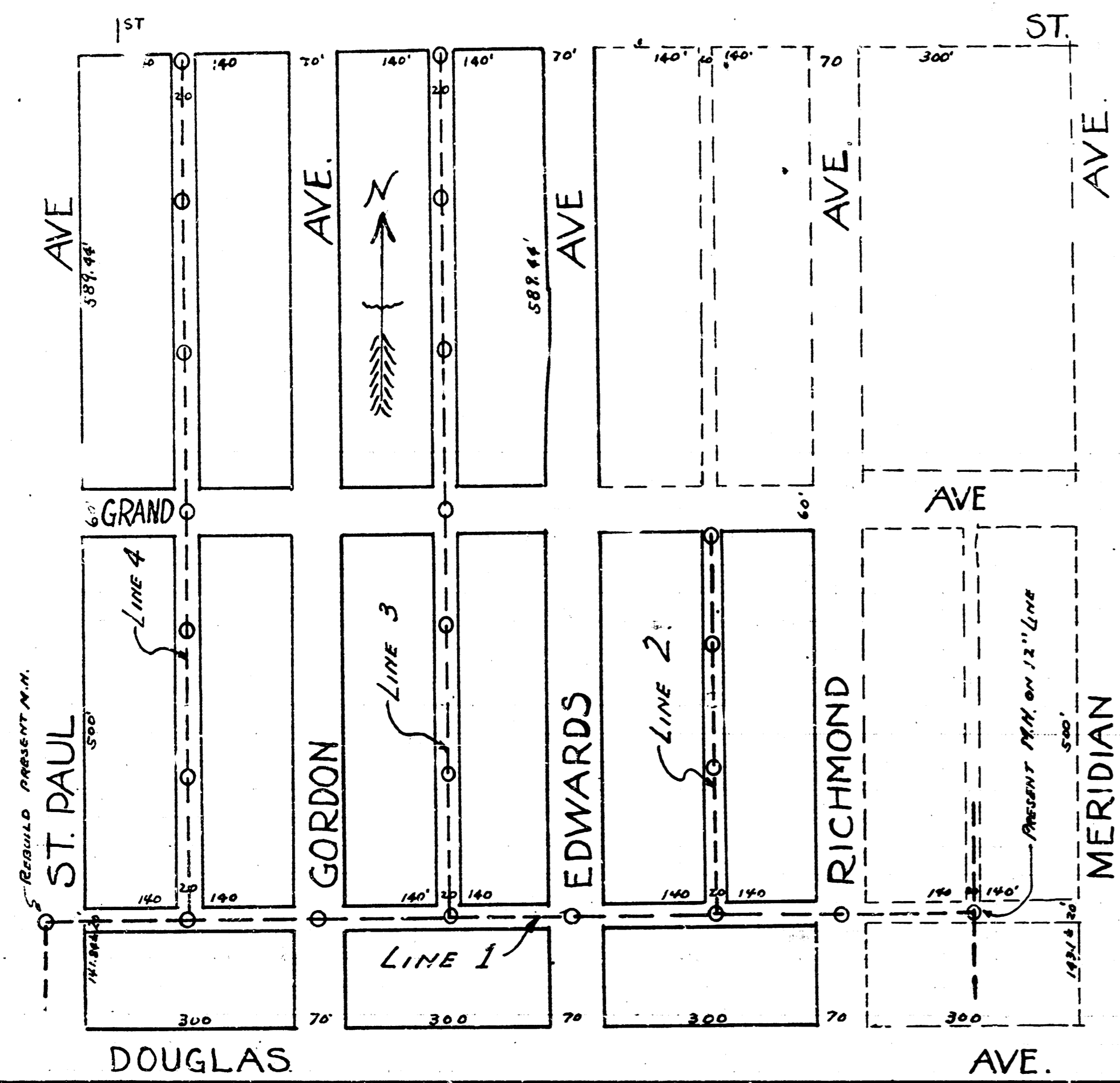
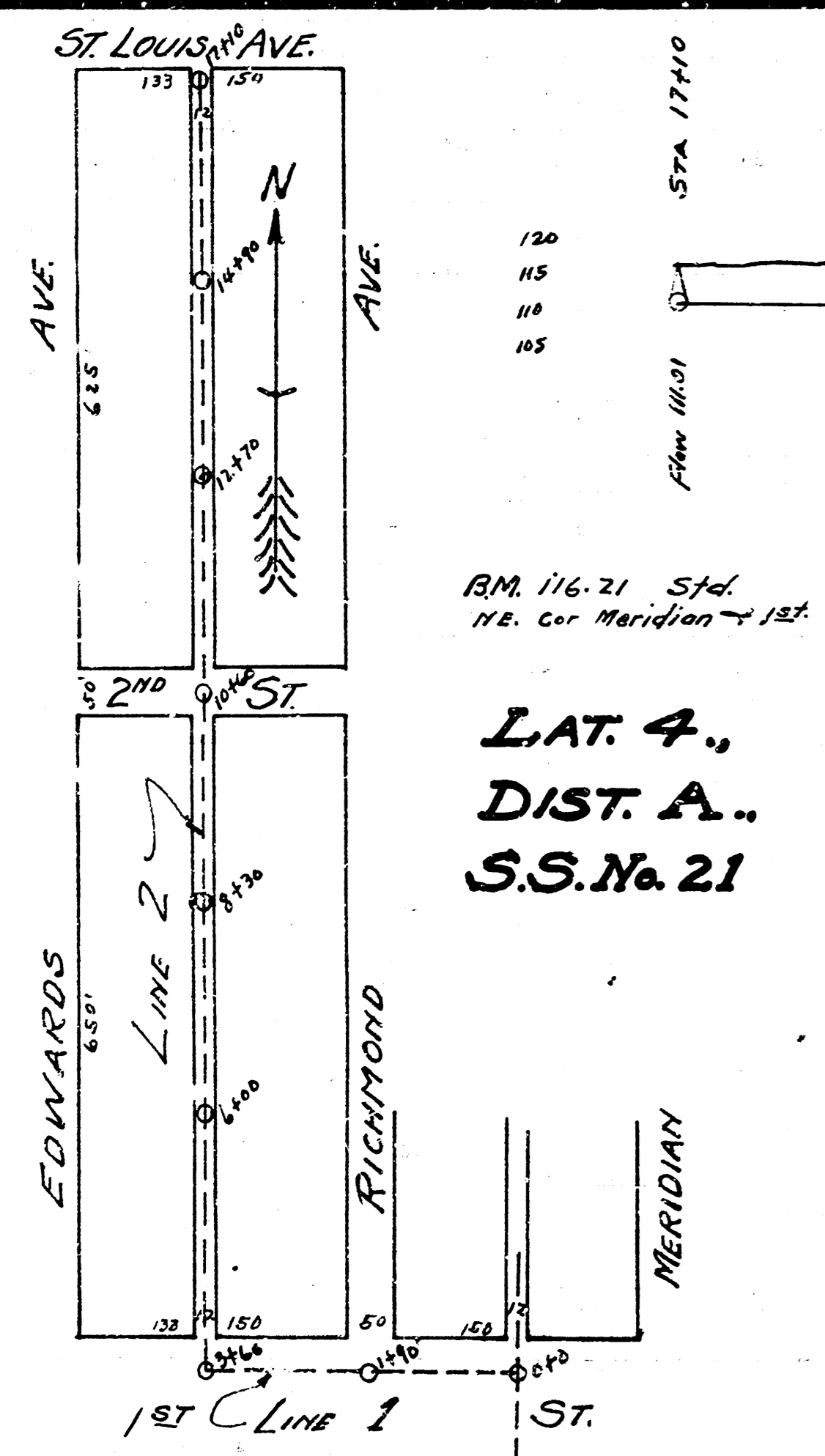


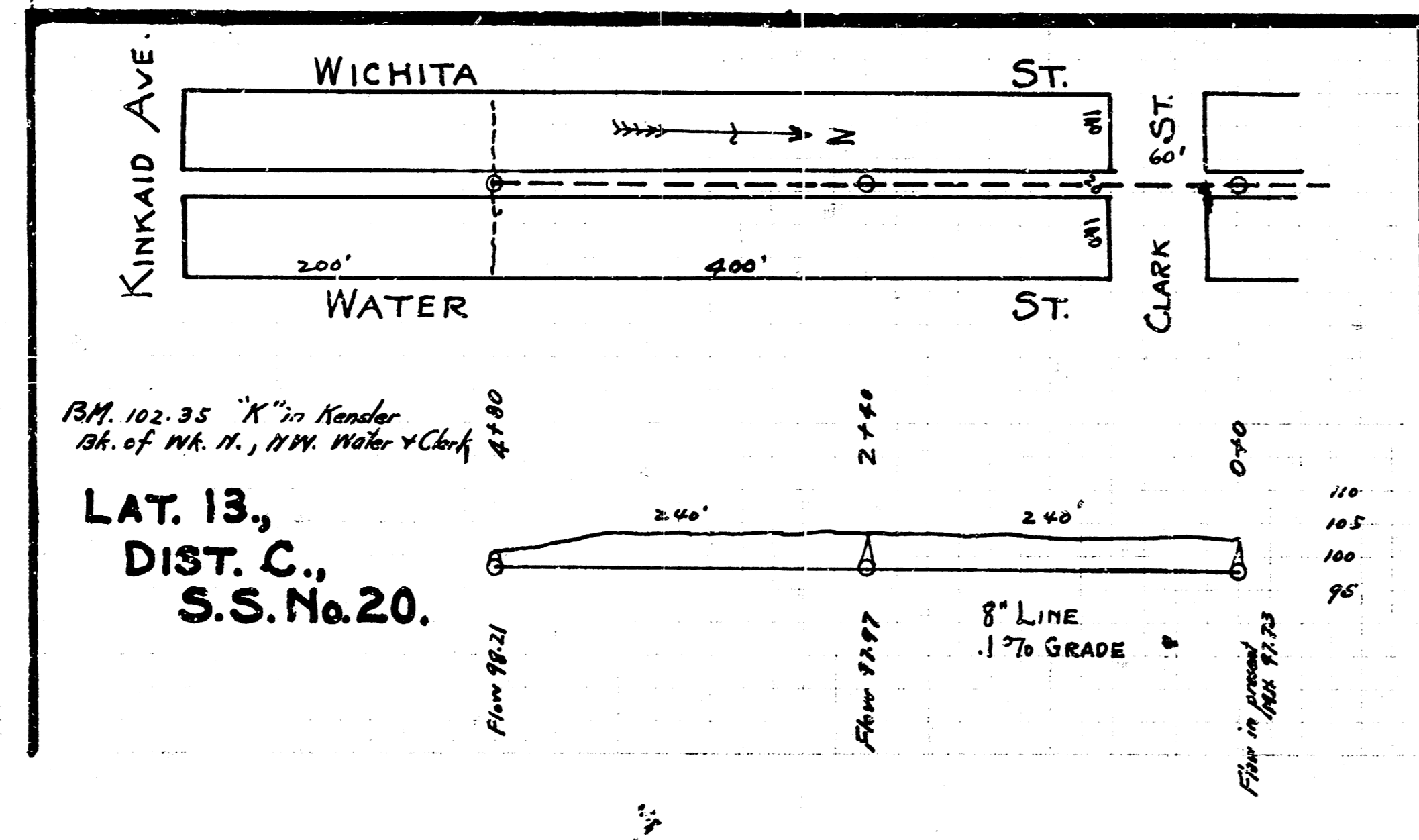
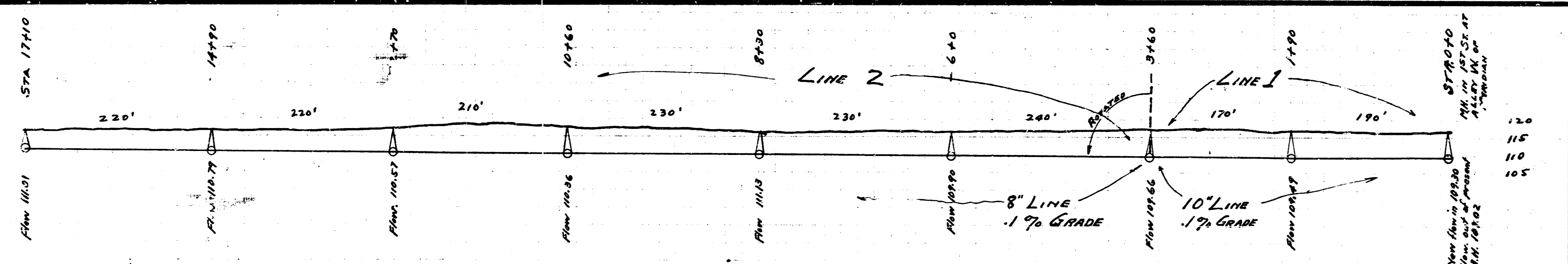
B.M. 114.86 "K" in Kensler in ch. wk. N.S. of Alley N. of Douglas - W.S. of Richmond.



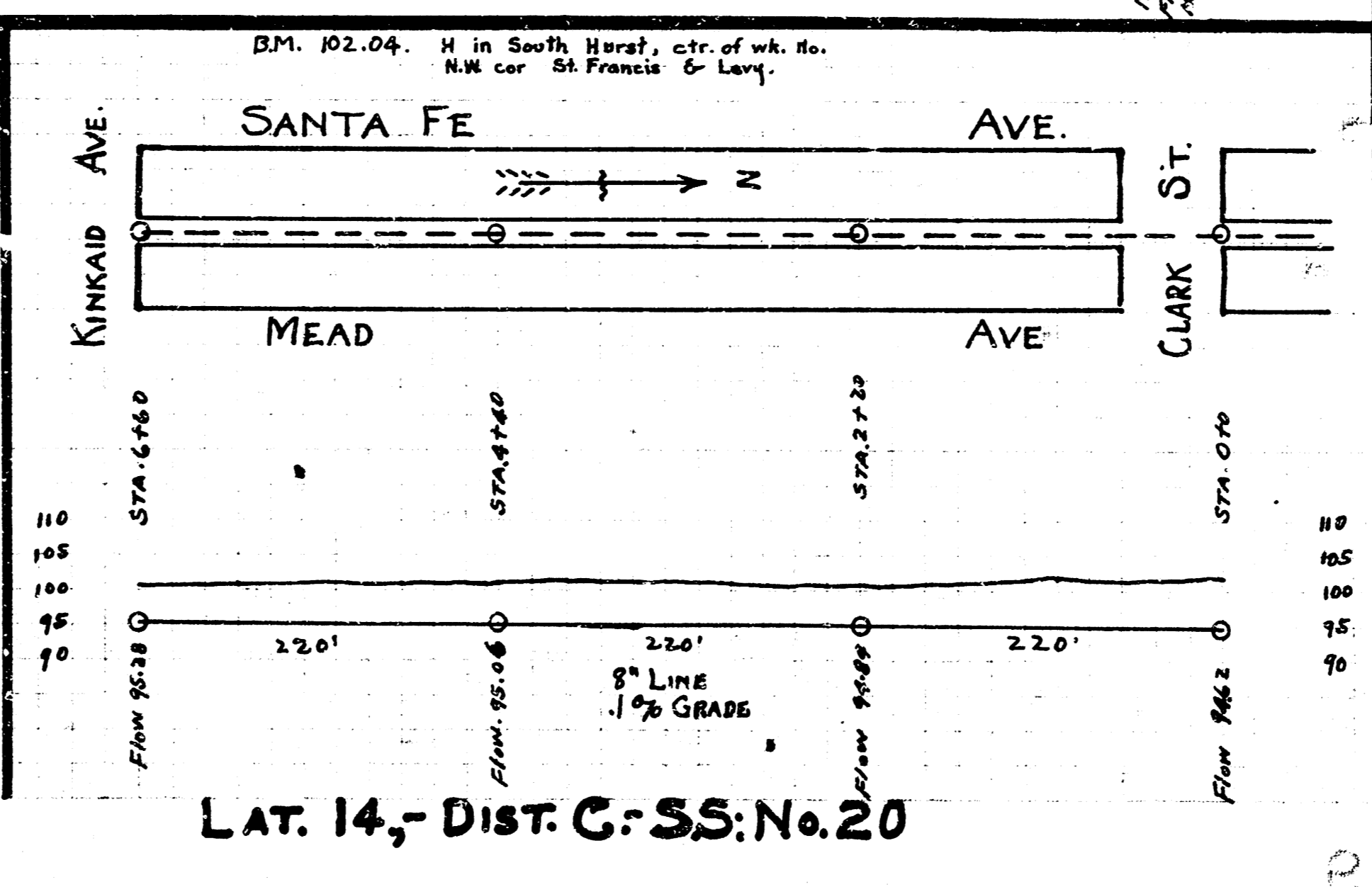
LAT. 5, DIST. A
S.S. No. 21



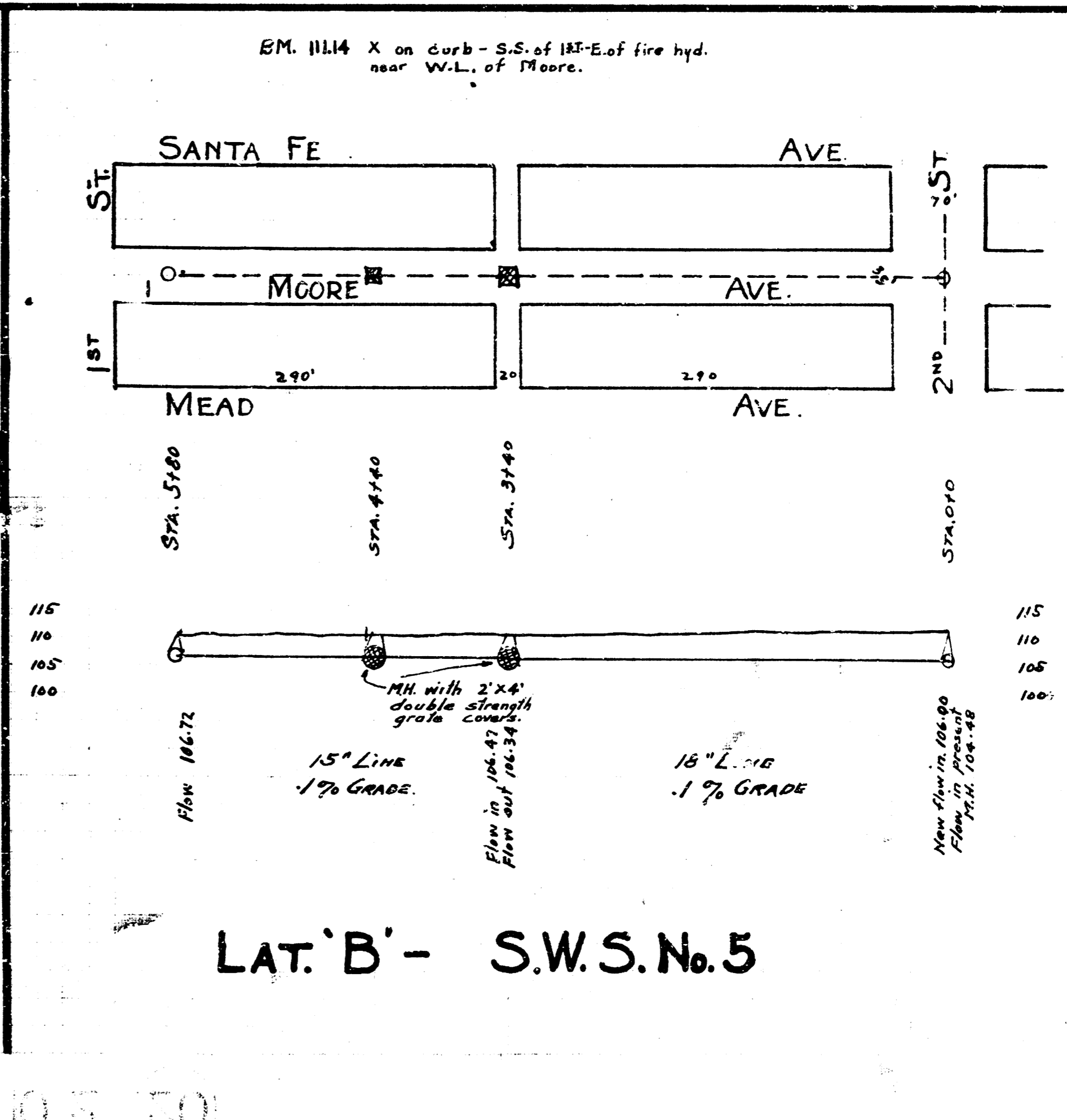
RM. 116.21 Std. H.E. cor. Meridian - 135'
LAT. 4., DIST. A., S.S. No. 21



RM. 102.35 "K" in Kensler 15' of W. H. N. W. Water - Clark
LAT. 13, DIST. C., S.S. No. 20.



LAT. 14, DIST. C, S.S. No. 20



LAT. B - S.W.S. No. 5