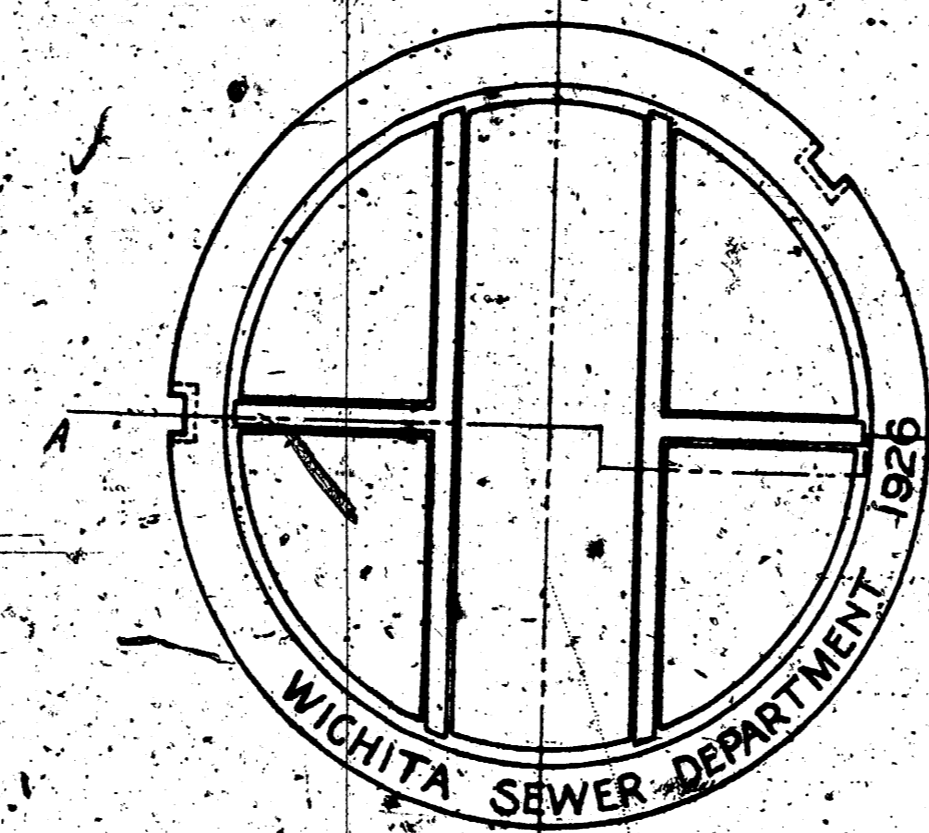
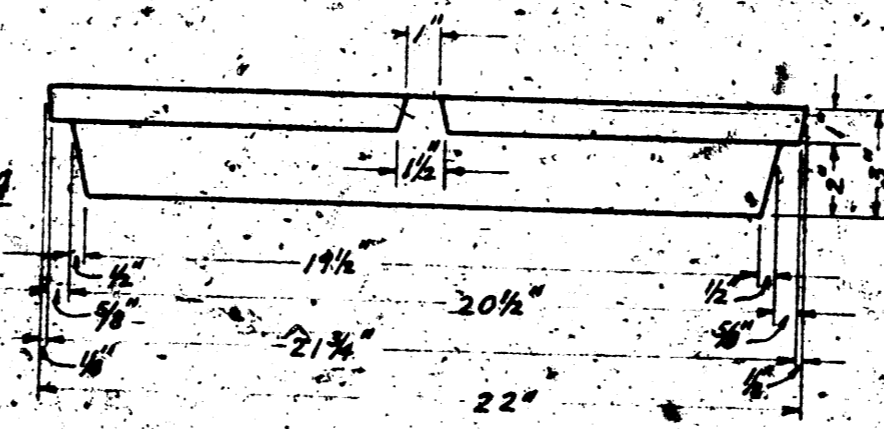


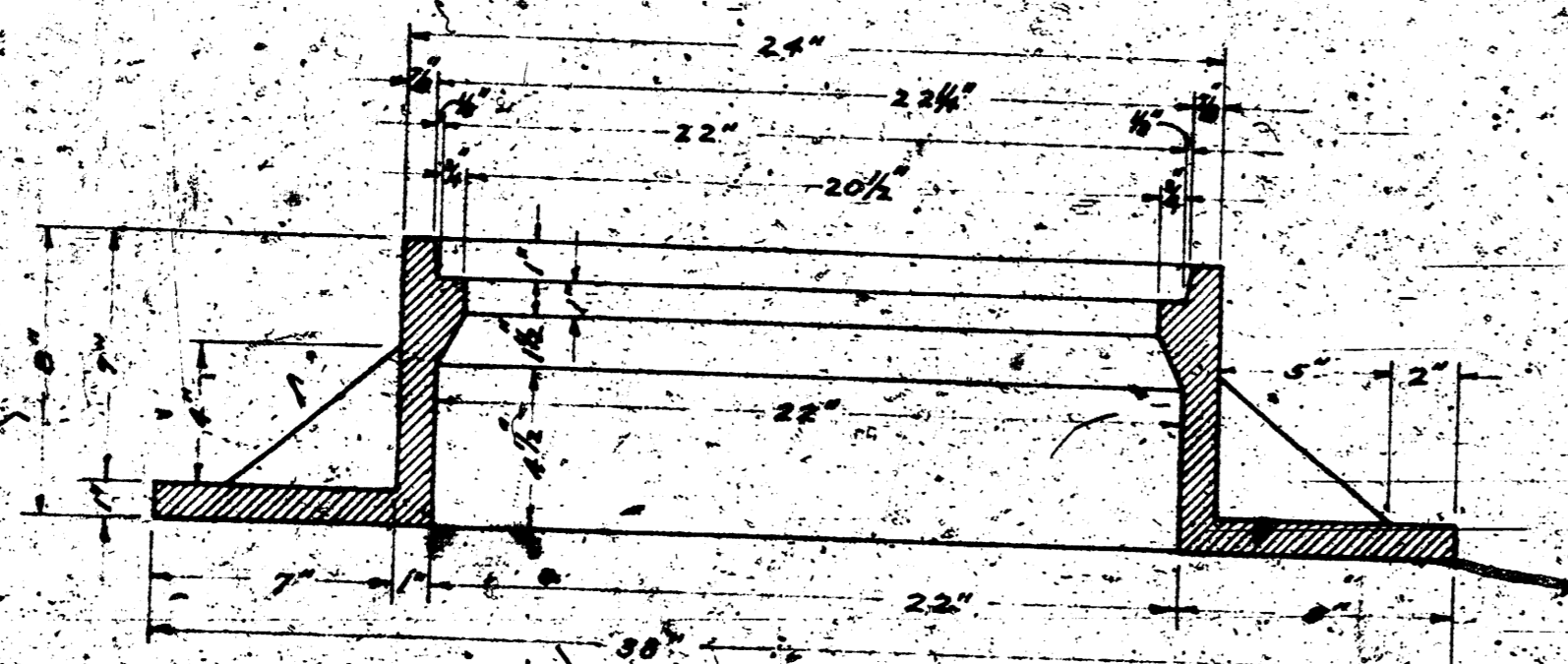
TOP VIEW OR PLAN OF
MANHOLE RING.



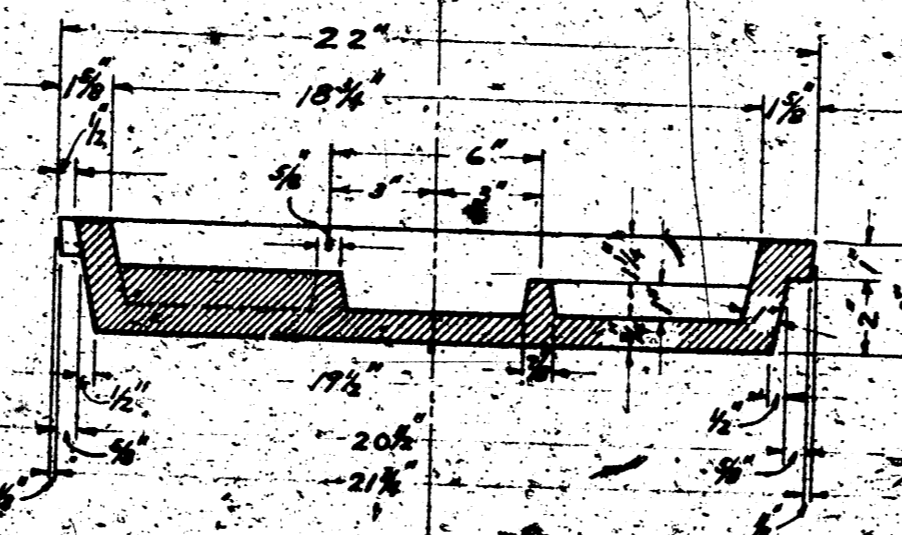
TOP VIEW OR PLAN OF
MANHOLE COVER.
DATE TO BE CHANGED TO CORRESPOND WITH
CURRENT YEAR.



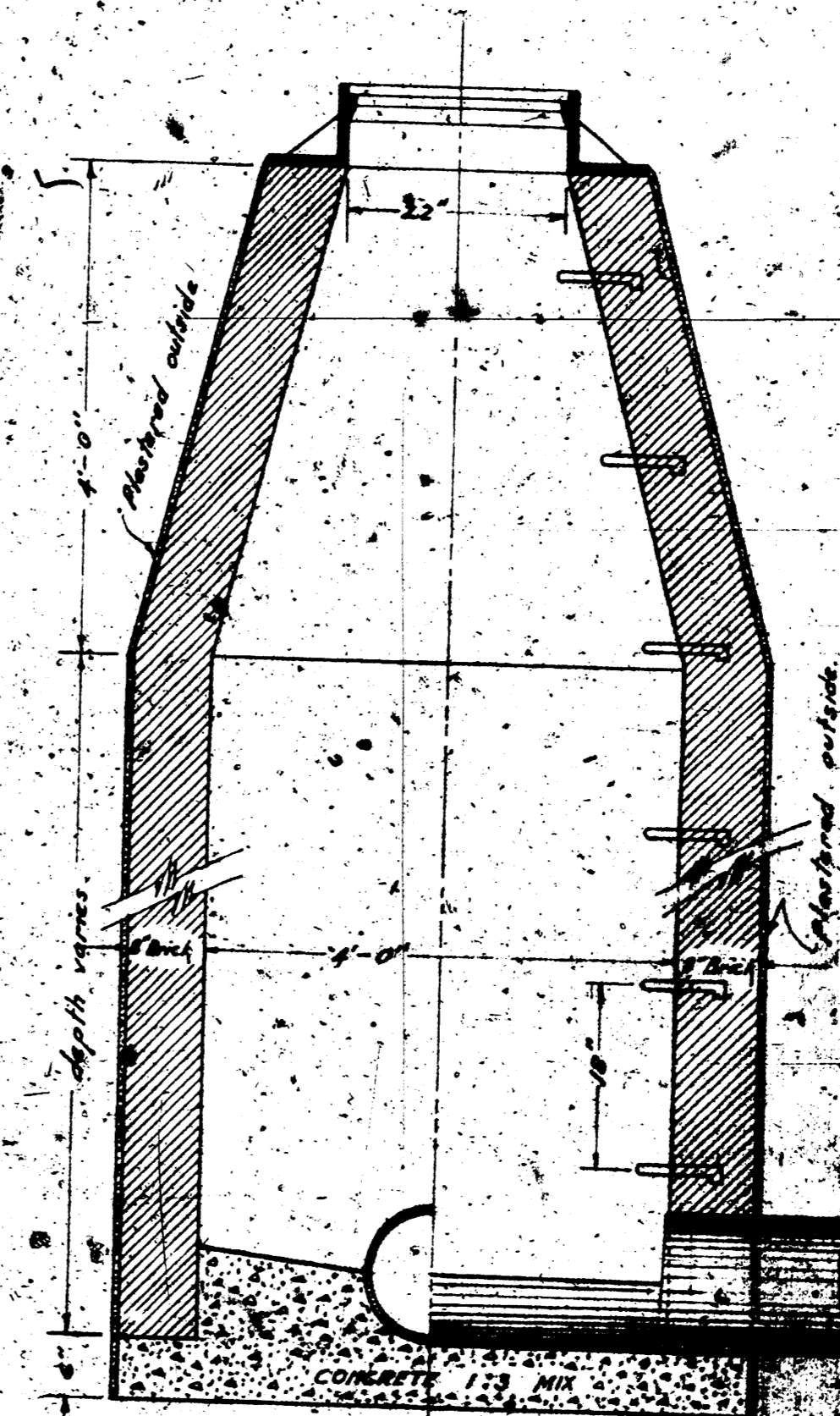
SIDE VIEW OR ELEVATION
OF MANHOLE COVER,
SHOWING DIMENSIONS OF
LIFTING NOTCH.



VERTICAL CROSS-SECTION OF MANHOLE RING.



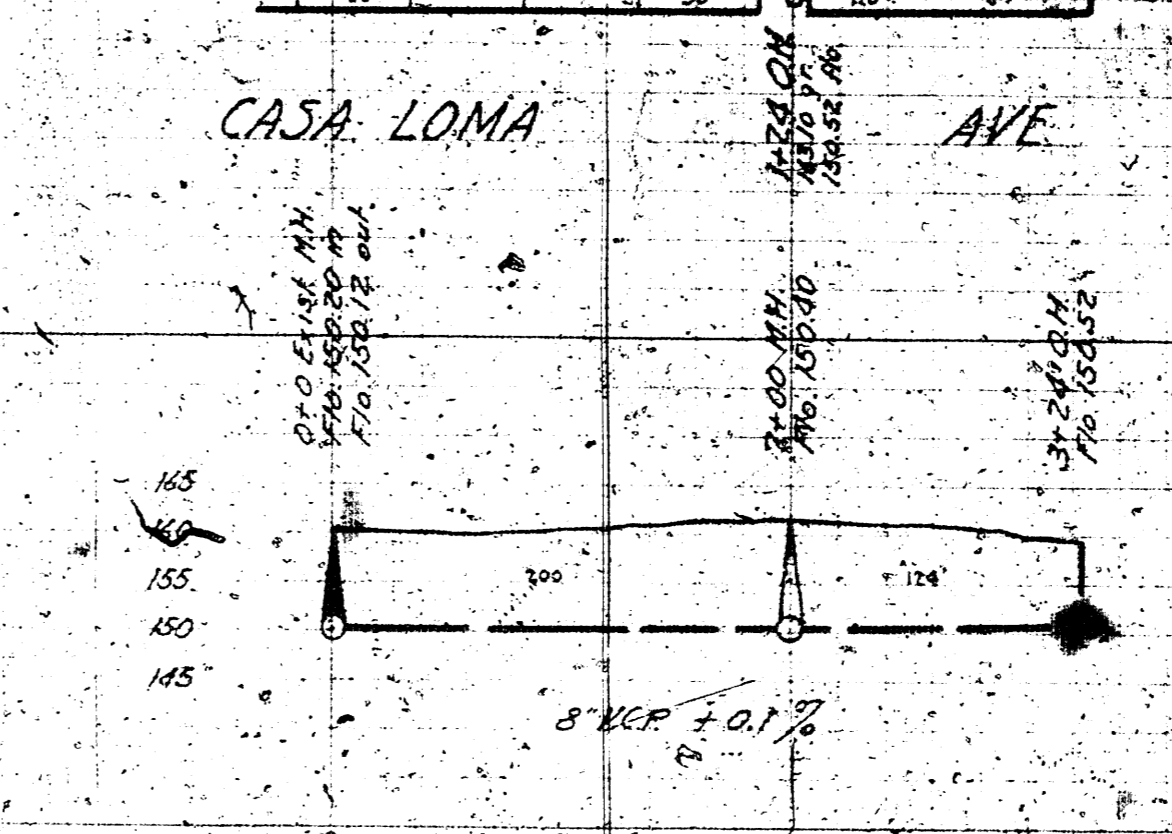
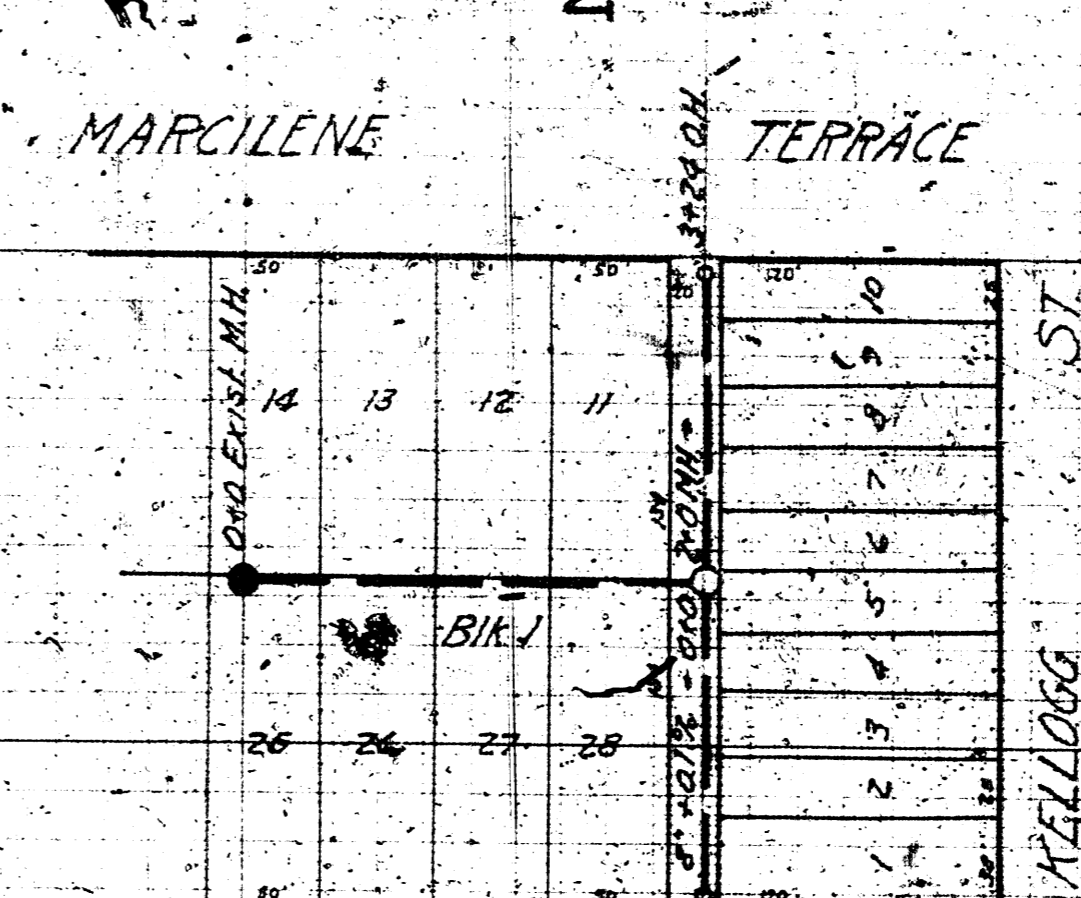
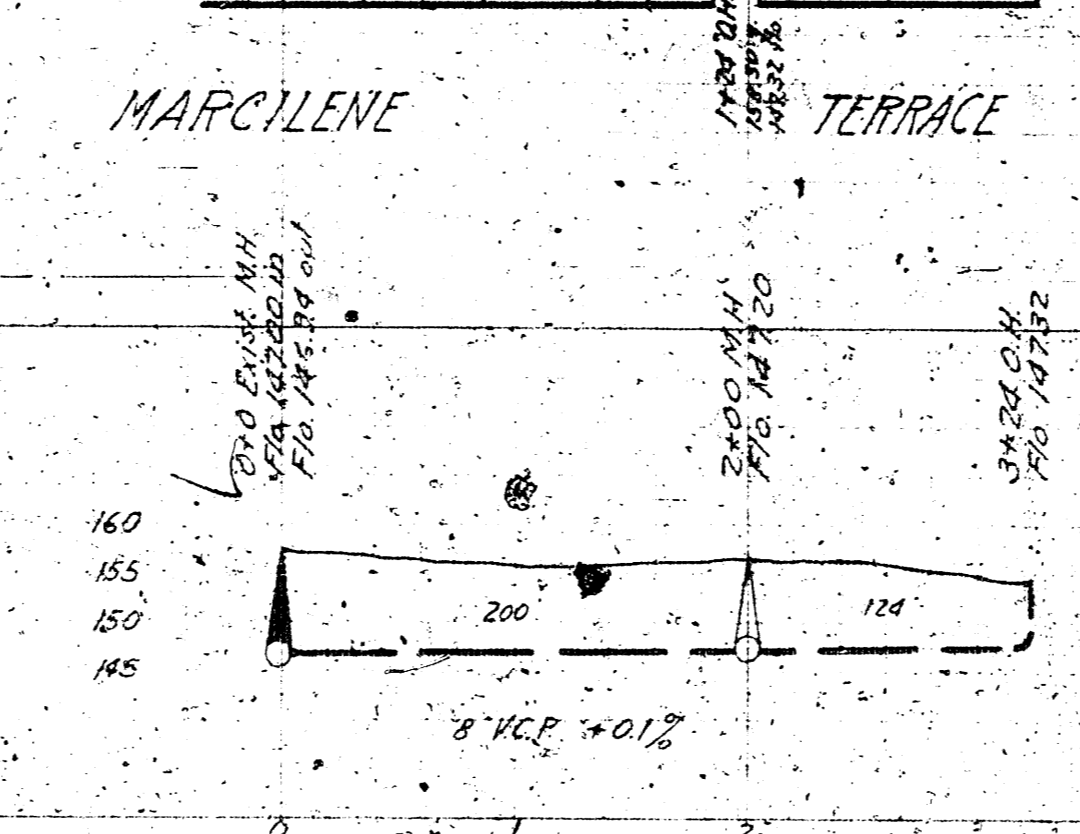
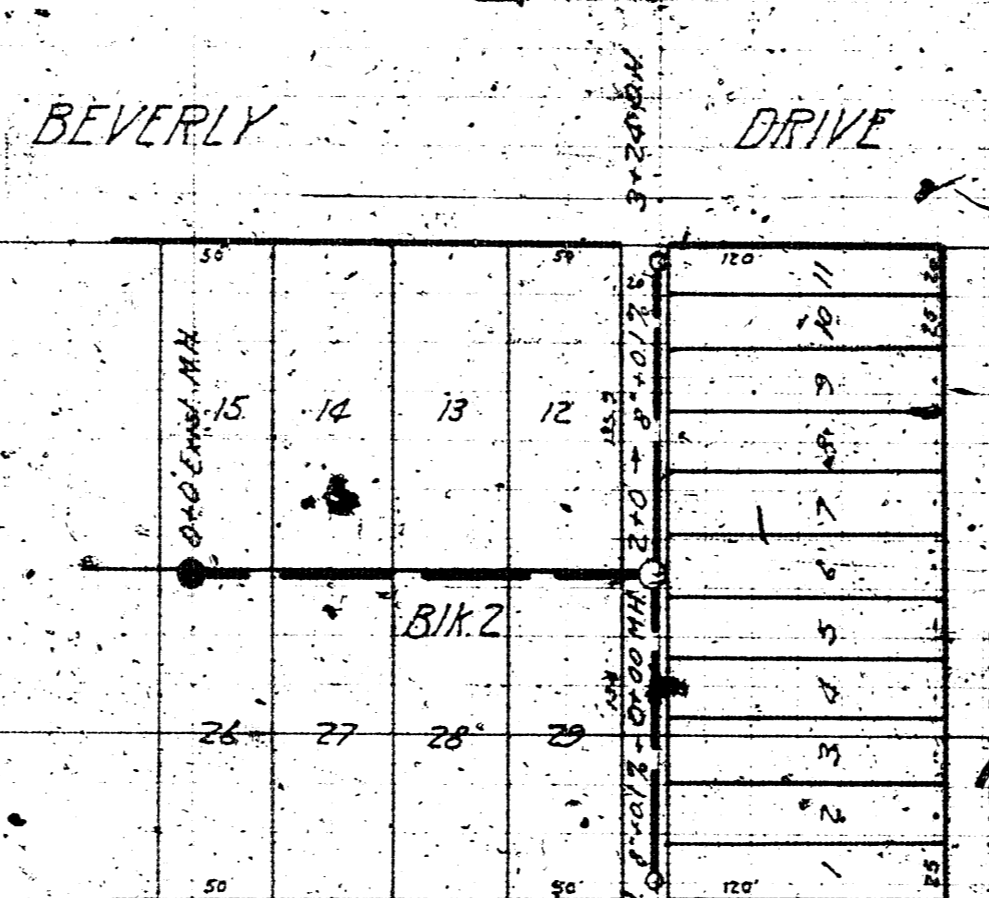
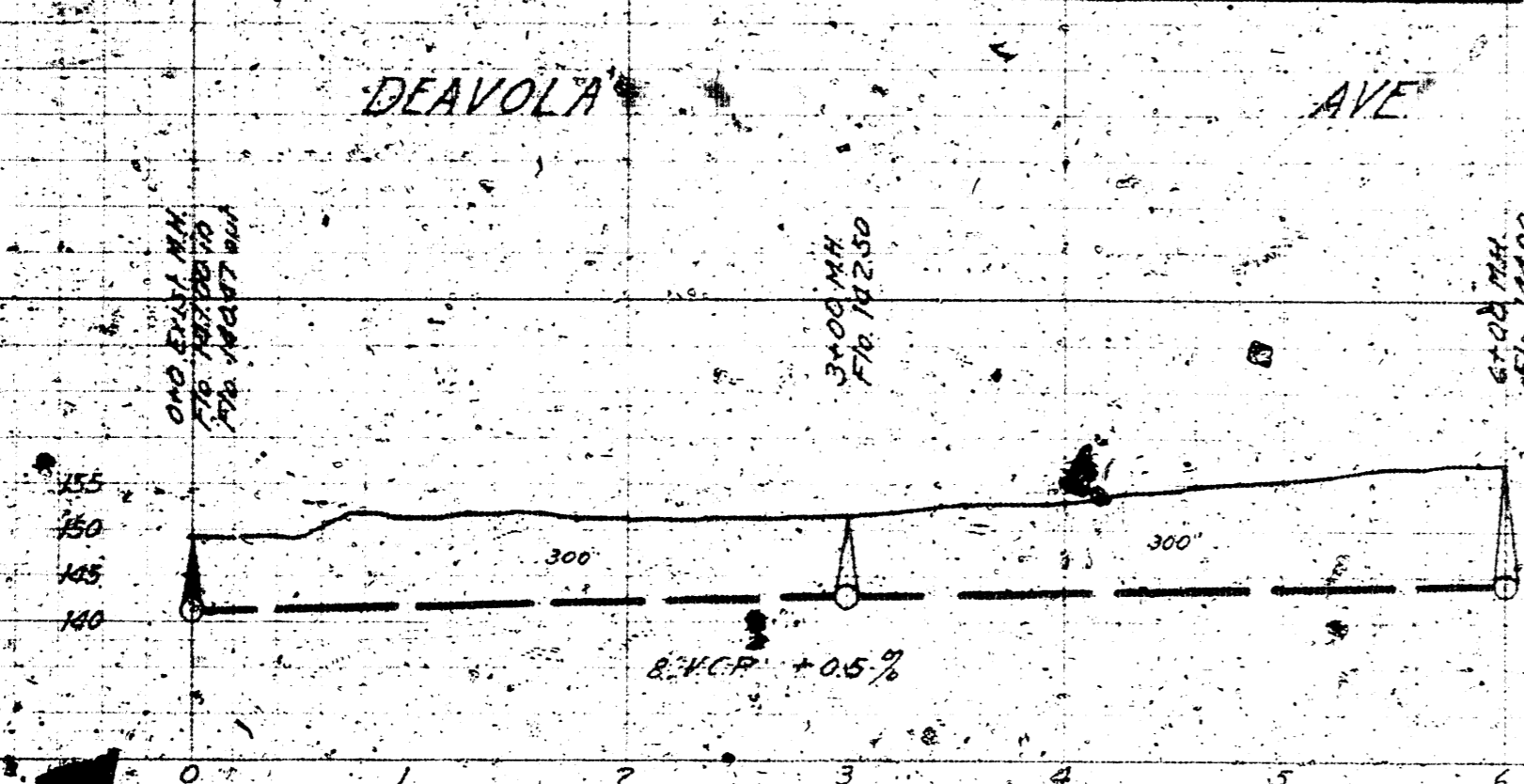
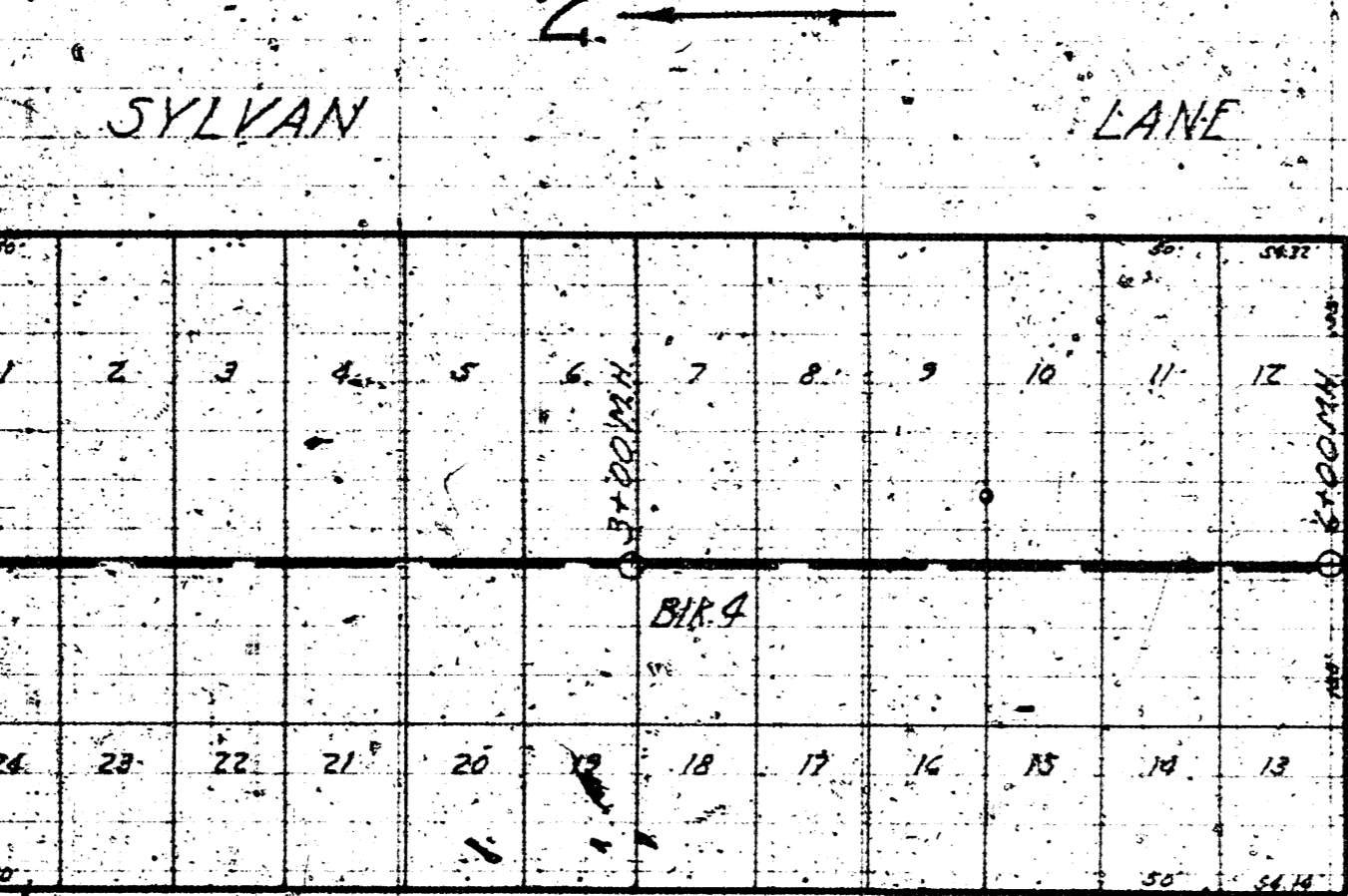
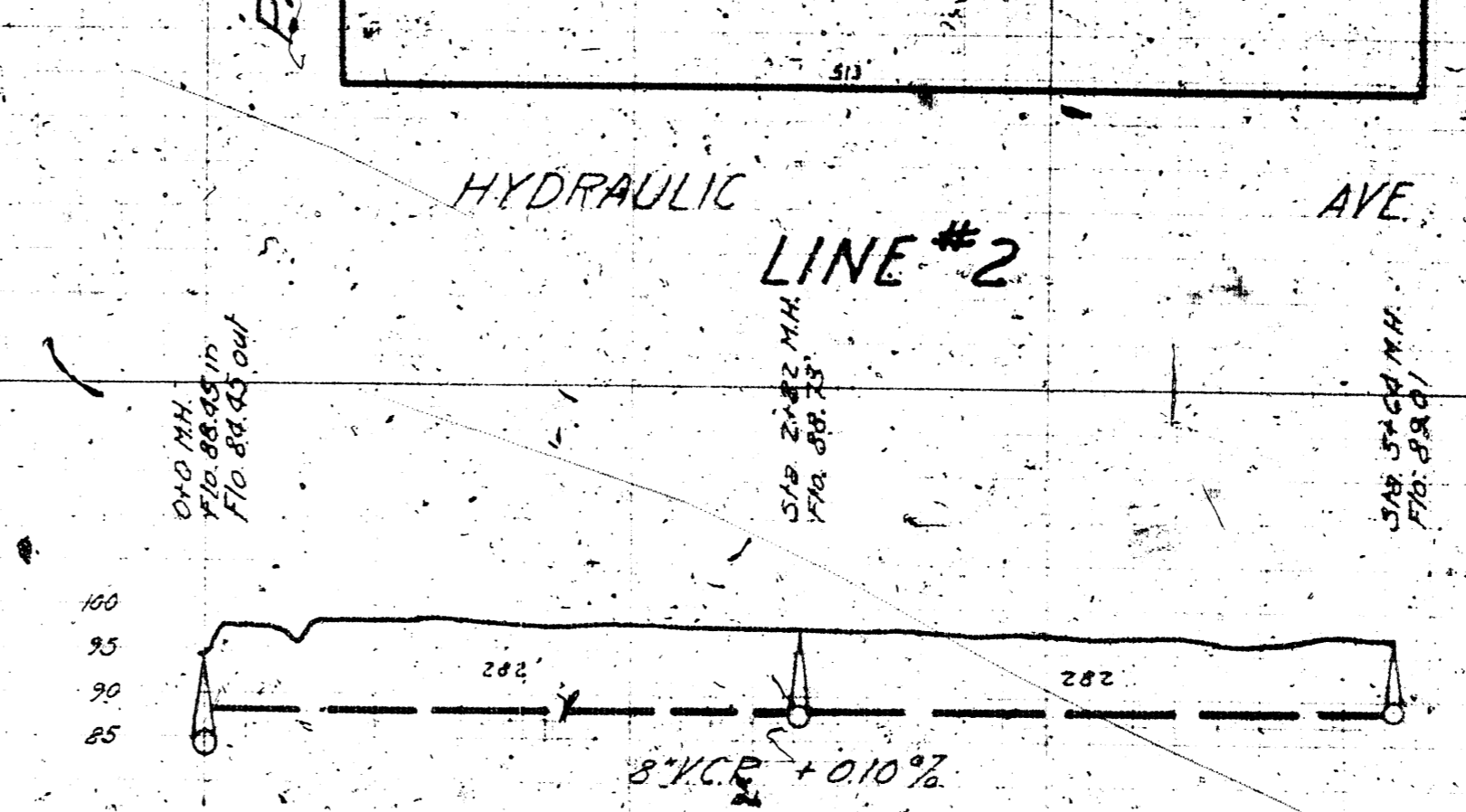
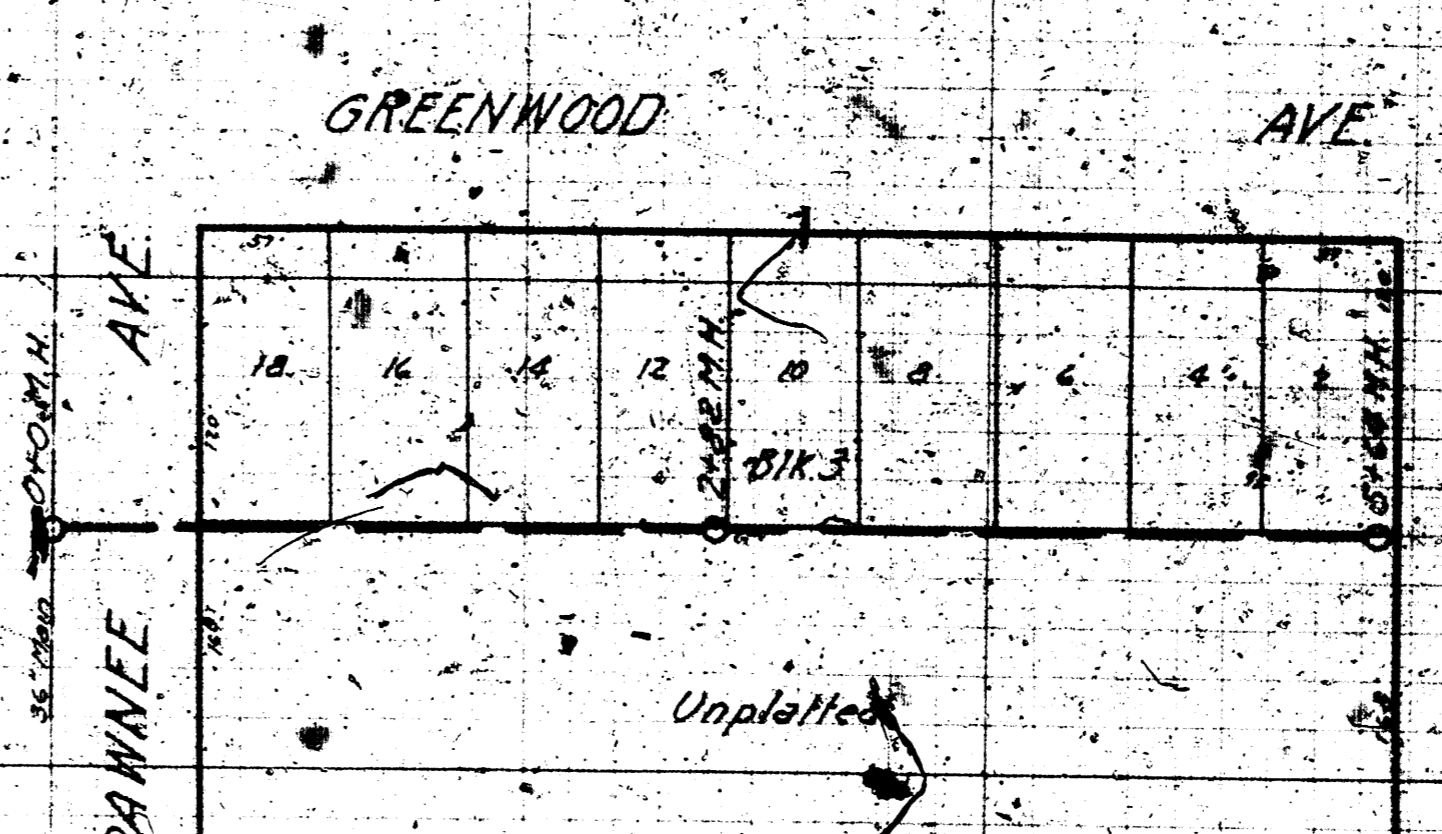
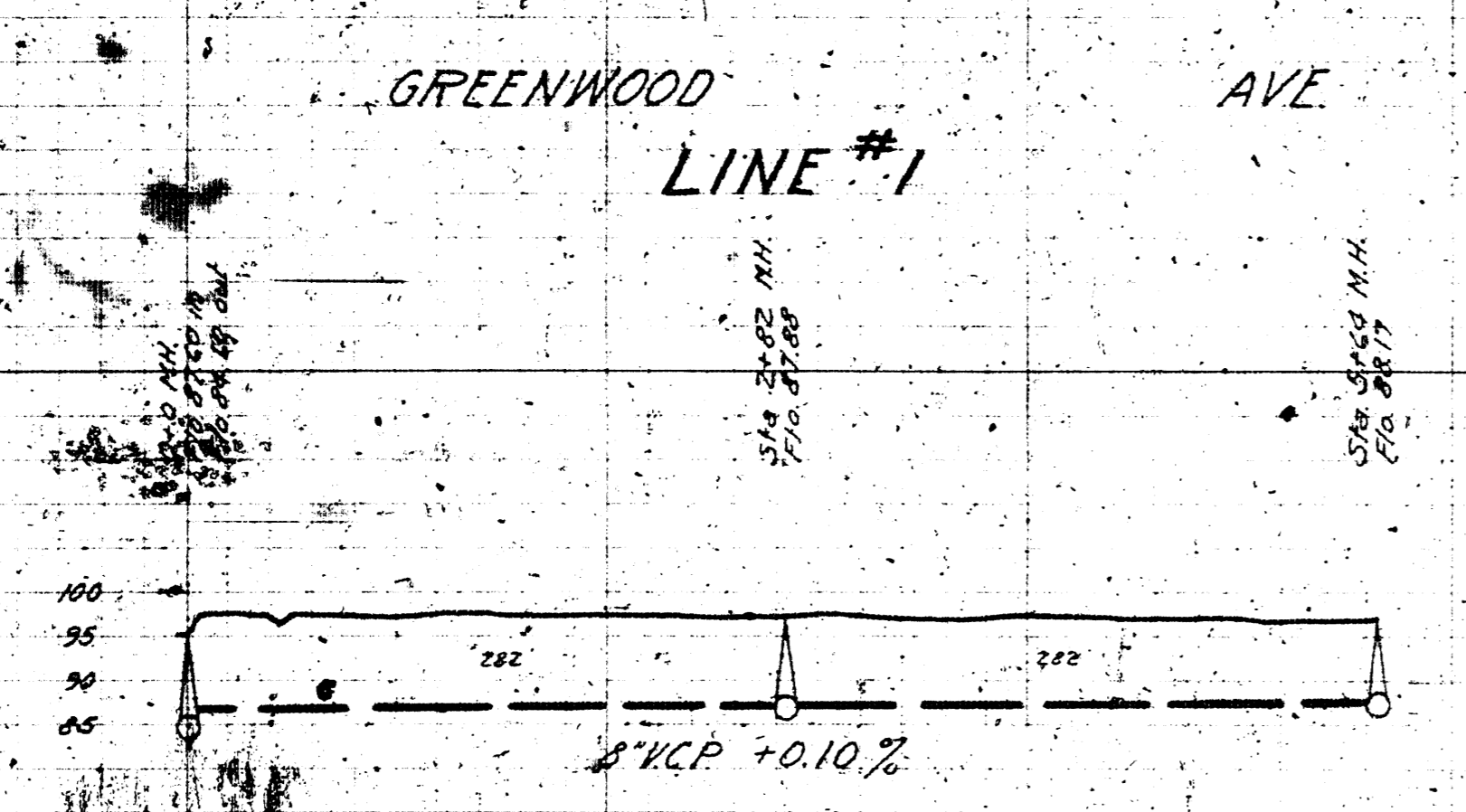
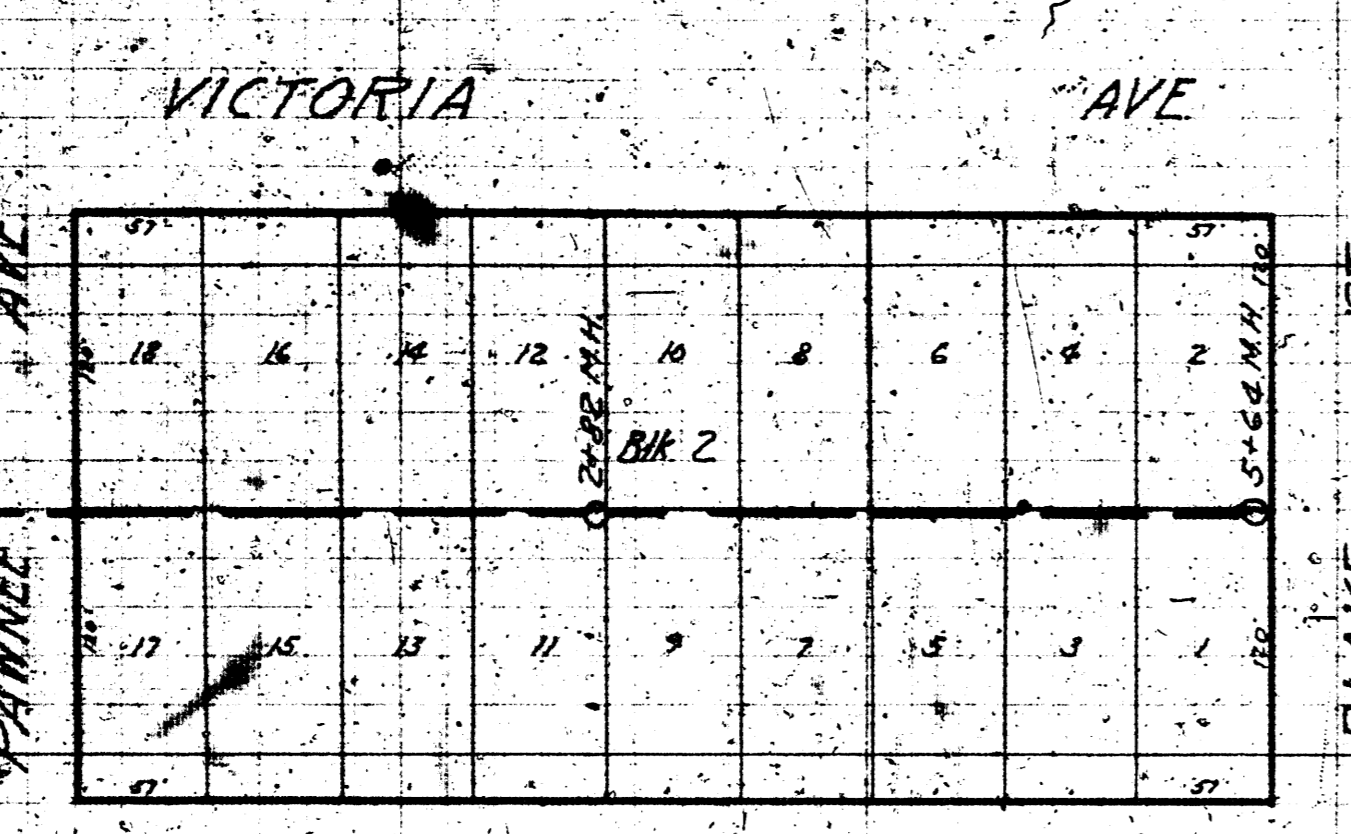
VERTICAL CROSS-SECTION, A-A, OF COVER,
SHOWING DEPTH OF LIFTING NOTCH.
COVER TO BE FILLED FLUSH WITH ASPHALT.



VERTICAL CROSS-SECTION OF
MANHOLE.
SCALE 1/4" = 1'-0"

DETAILS OF MANHOLE
FRAME AND COVER.
ADOPTED AS STANDARD DESIGN
By
DEPARTMENT OF ENGINEERING
CITY OF WICHITA, KANSAS.
D.L. BROCKWAY H.P. MUSICK
CITY ENGINEER DRAFTSMAN
SCALE, EXCEPT AS NOTED, 1/4" = 1'-0"
1926

LAT. P. DIST. B. S.S. #20



ENGINEERING DEPARTMENT
CITY OF WICHITA, KANSAS
P.L. BROCKWAY CITY ENGINEER
B.E. SMITH ENGINEER OF DESIGN
APRIL 1942 SCALE 1" = 40'

LAT. 9. DRY CREEK SUBMAIN
S.S. #12

B.M. 158.82 Egd of ds. W.S. Marcellene & S.S. Metzlogg
158.99 Iron N.M. cor. Sylvan Lane & Gilbert