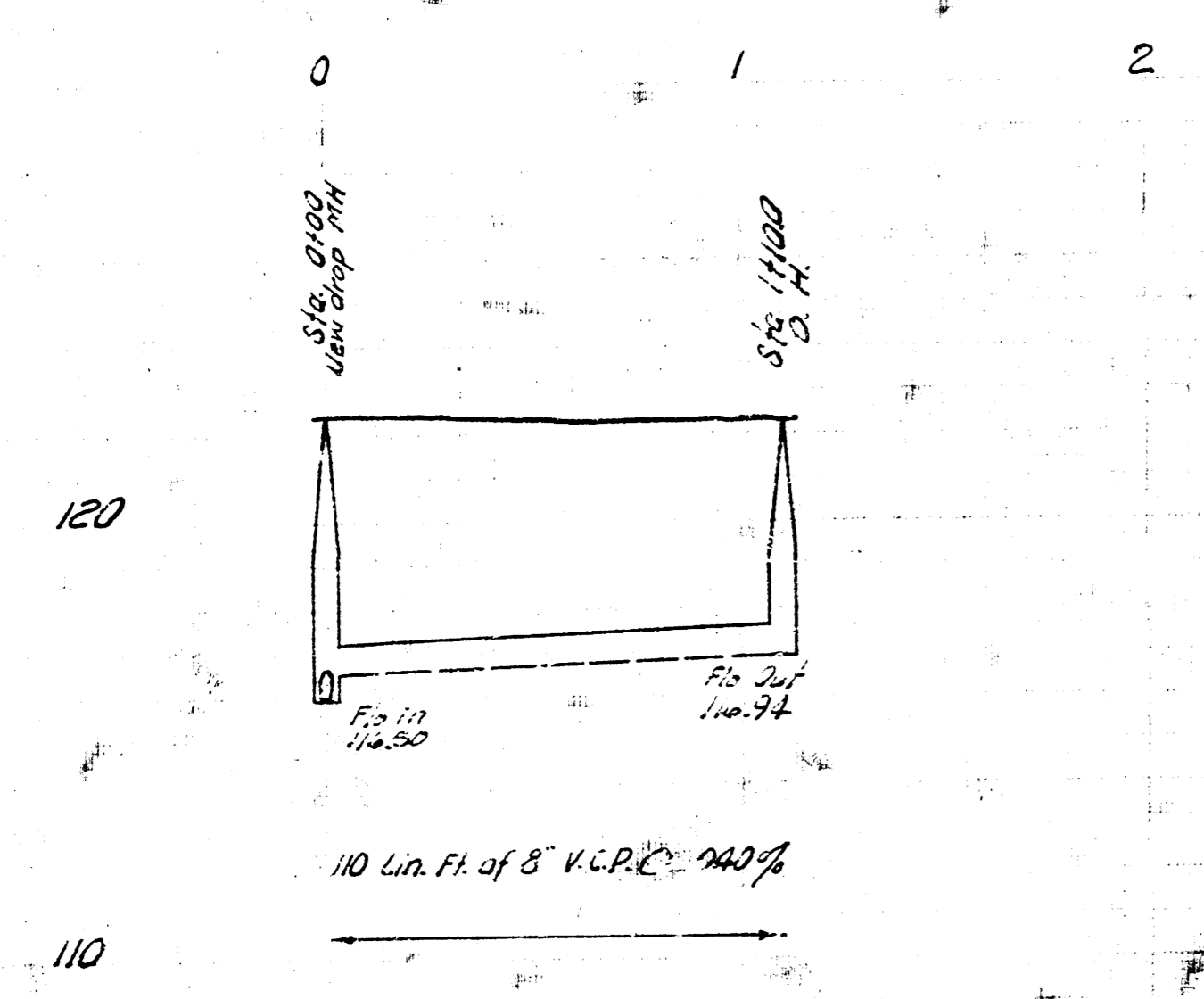
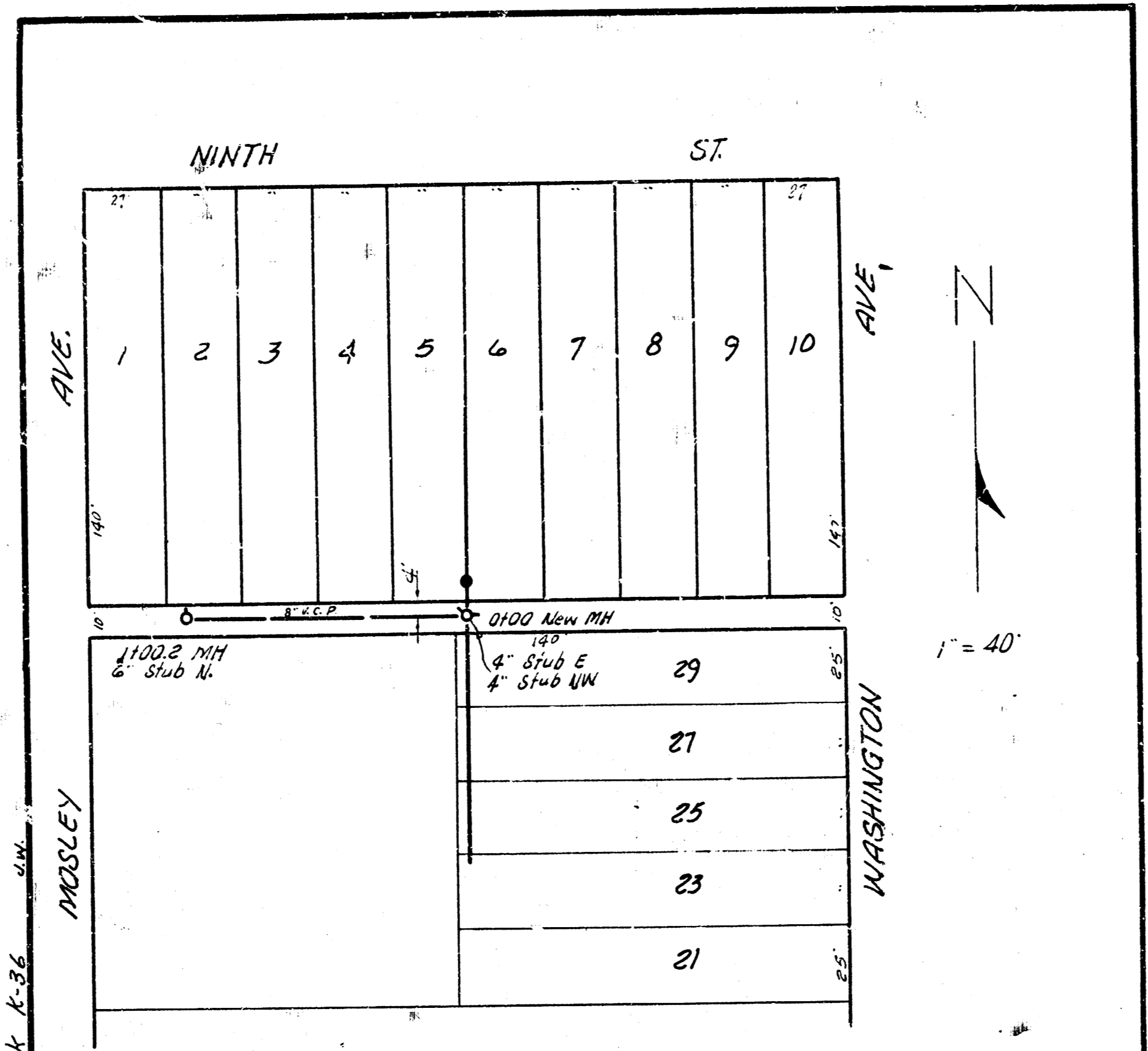


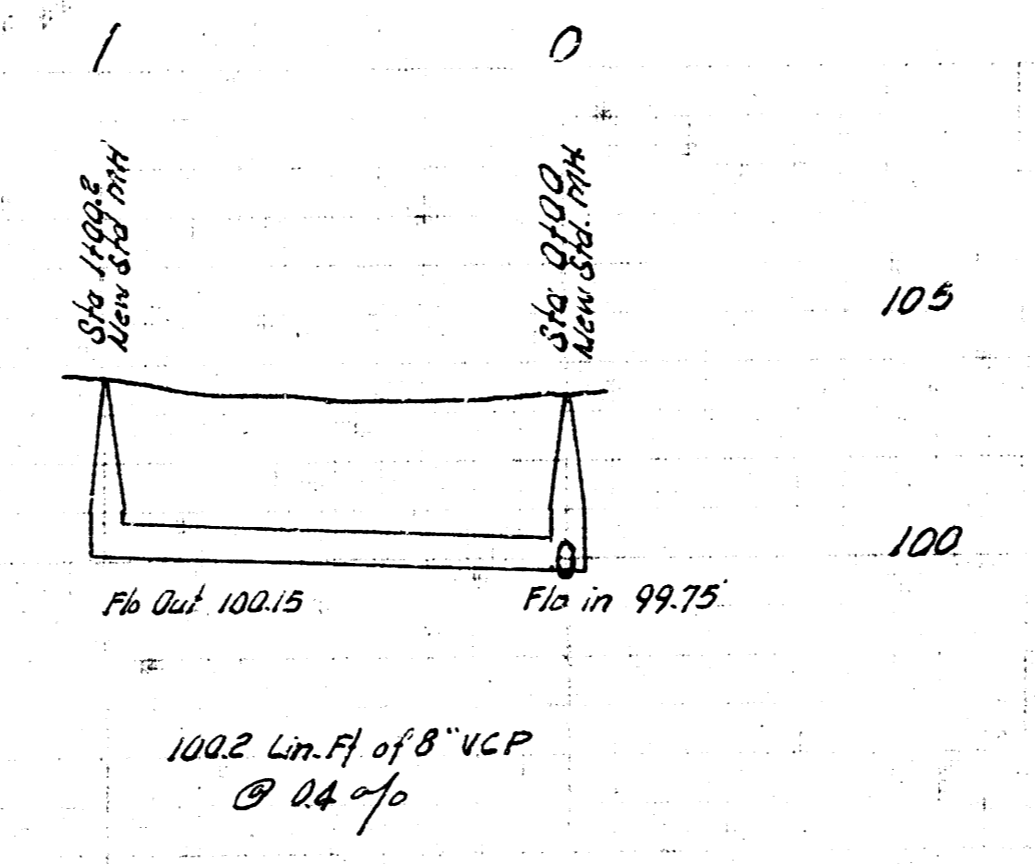
B.M. 121.64 Top Bolt 34' S. of C.E. Car Service St. NE cor. 20th of Arkansas.  
 B.M. 124.27 T in Troy F. Hyd. S.E. cor. 20th of Arkansas.



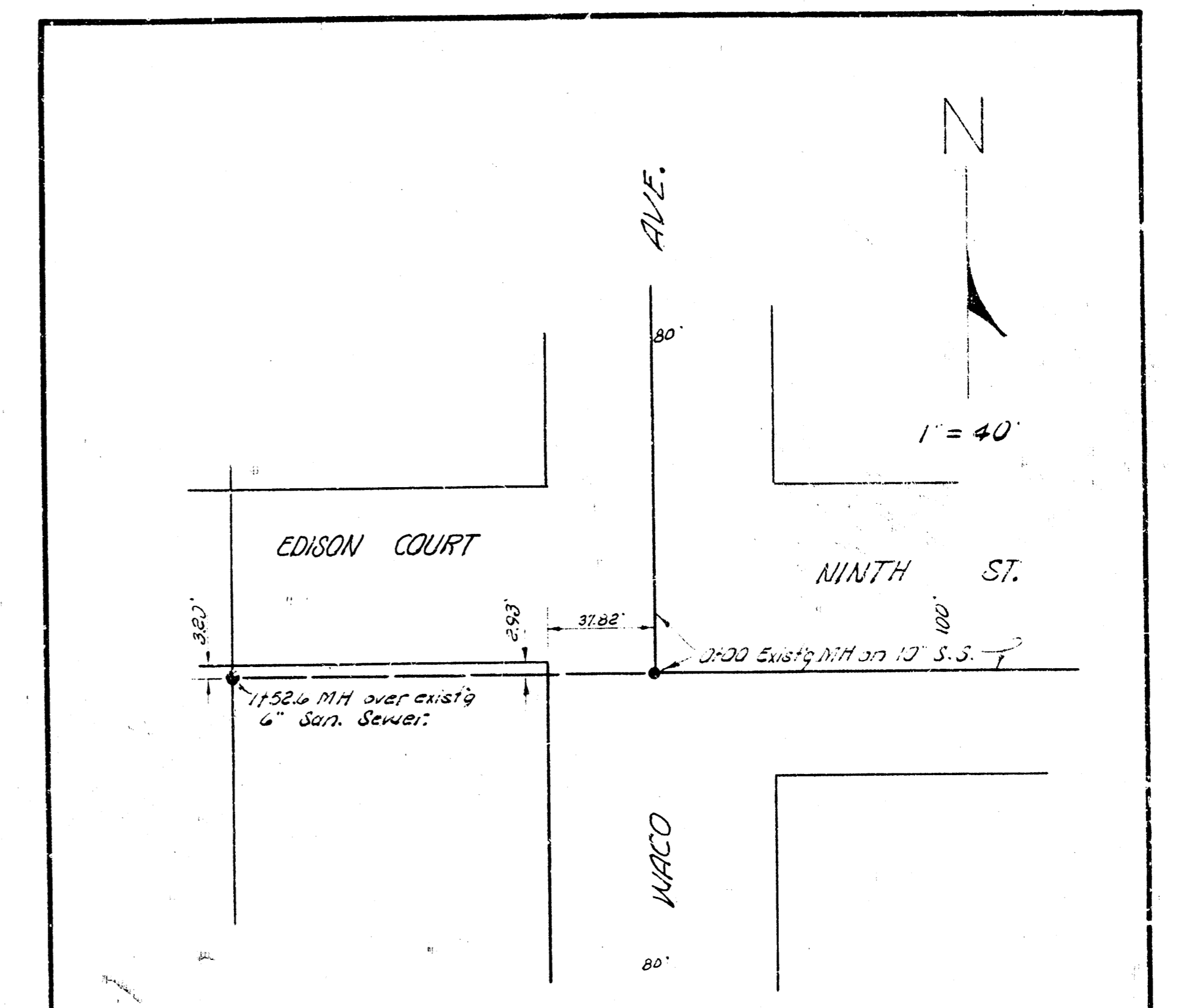
EXT. LAT. H, DIST. R, N<sup>o</sup> 20  
 CITY OF WICHITA, KANS.  
 B. E. SMITH CITY ENGINEER  
 PRIVATE CONTRACT  
 12-30-55



B.M. 112.90 Std. S.E. cor. 9th and Washington.



EXT. SUB. D, S. S. N<sup>o</sup> 1  
 CITY OF WICHITA, KANS.  
 B. E. SMITH CITY ENGINEER  
 PRIVATE JOB  
 12-30-55



EXT. DIST. Y, S. S. N<sup>o</sup> 20  
 CITY OF WICHITA, KANS.  
 B. E. SMITH CITY ENGINEER  
 PRIVATE CONTRACT  
 12-30-55