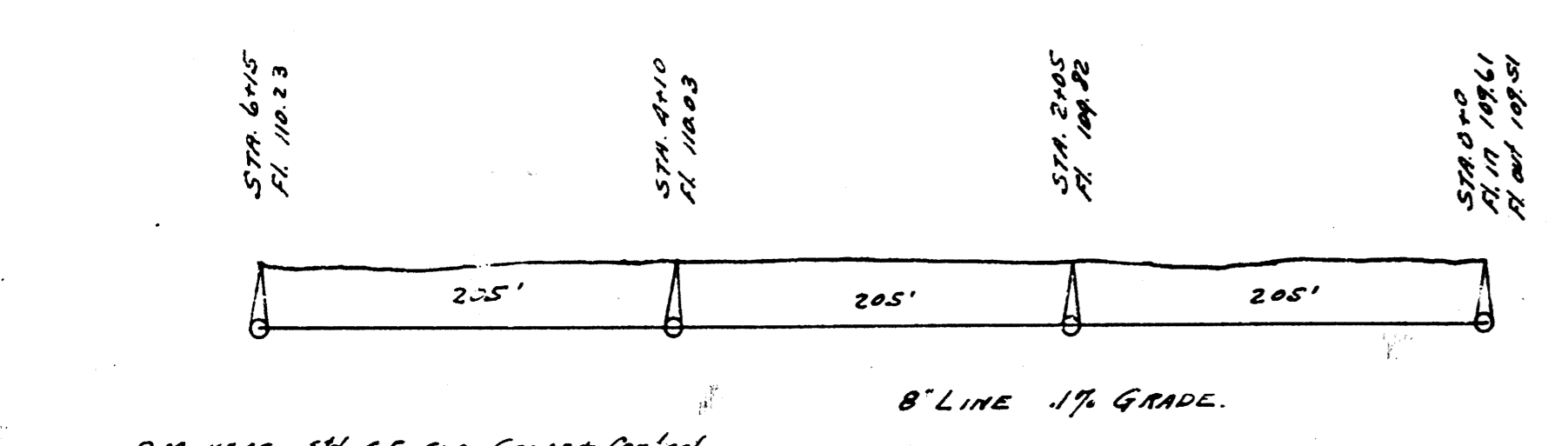
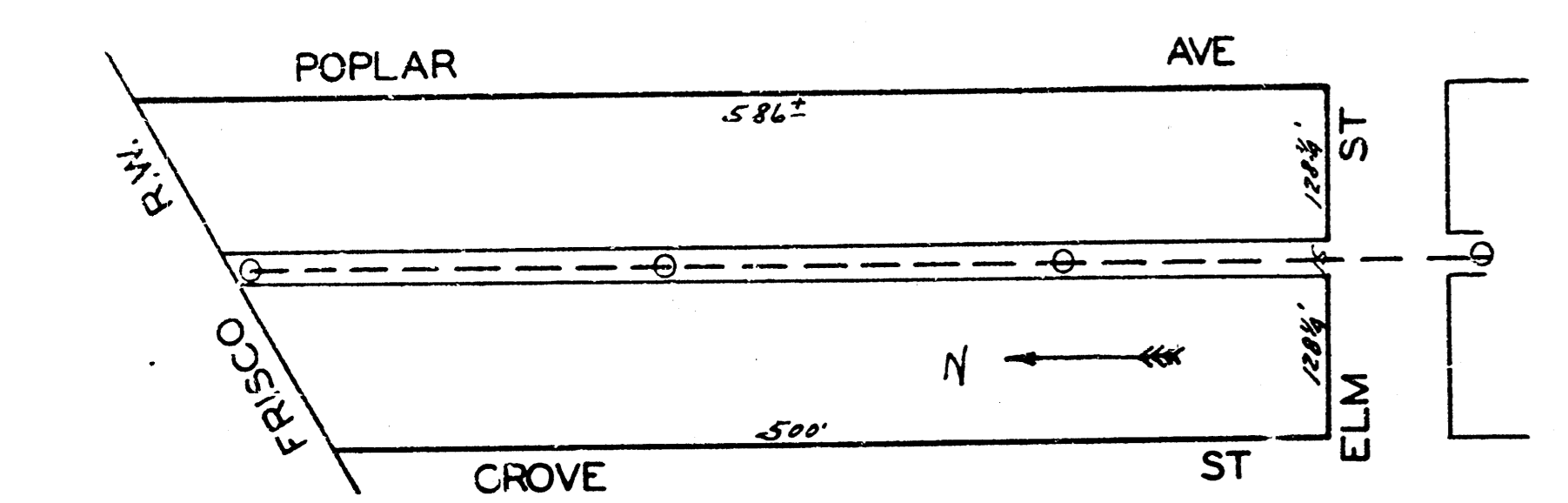
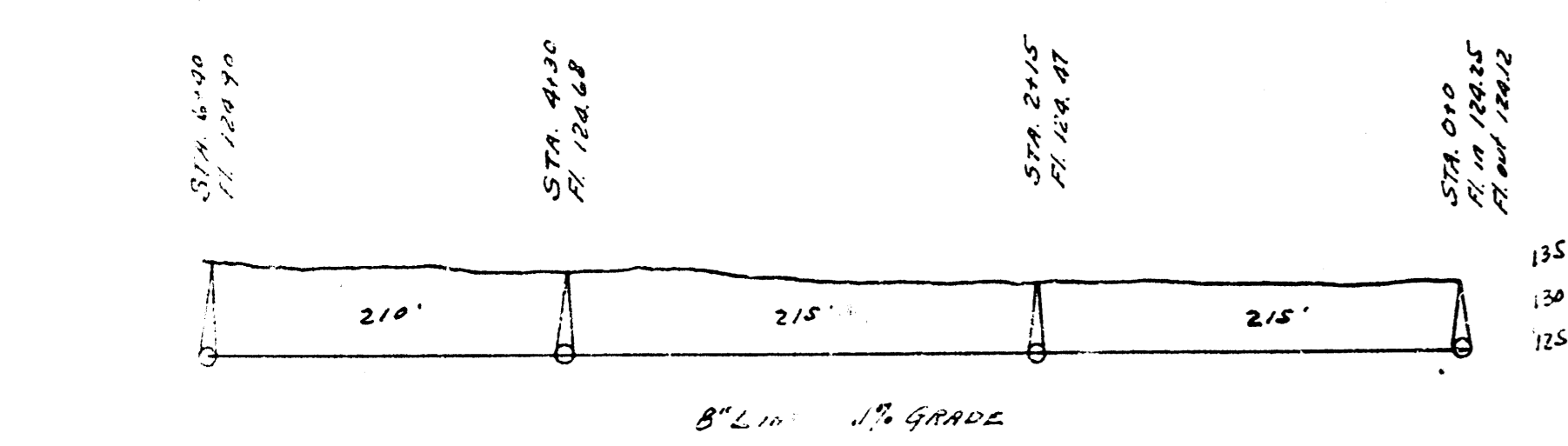
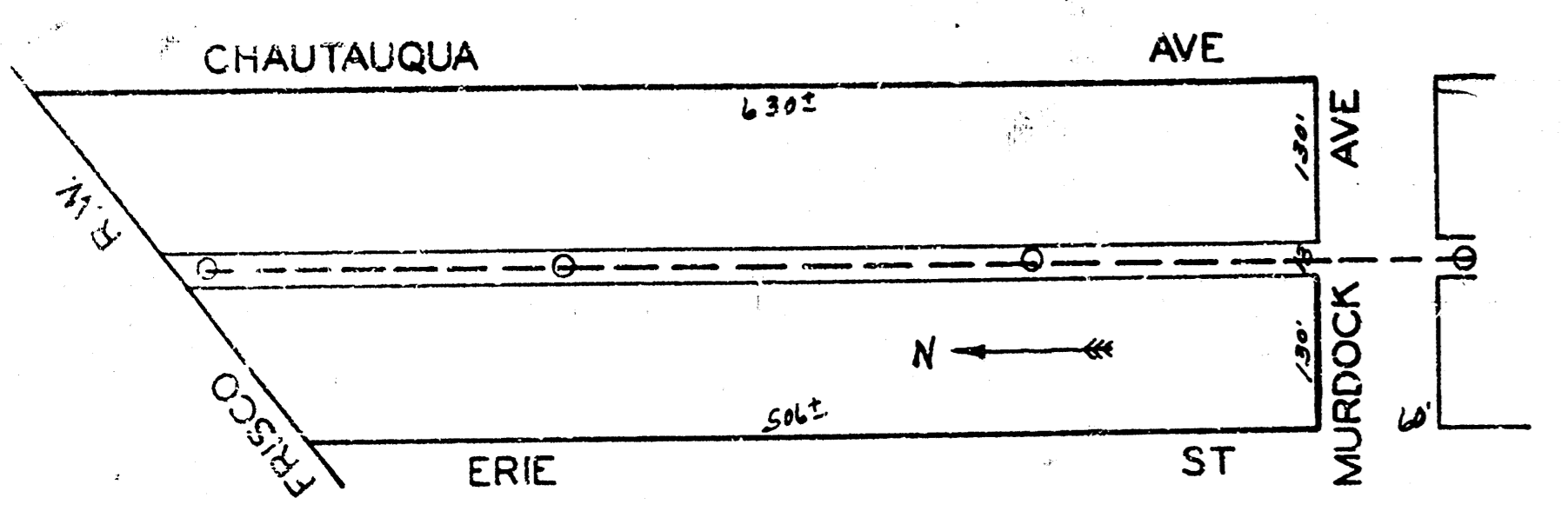
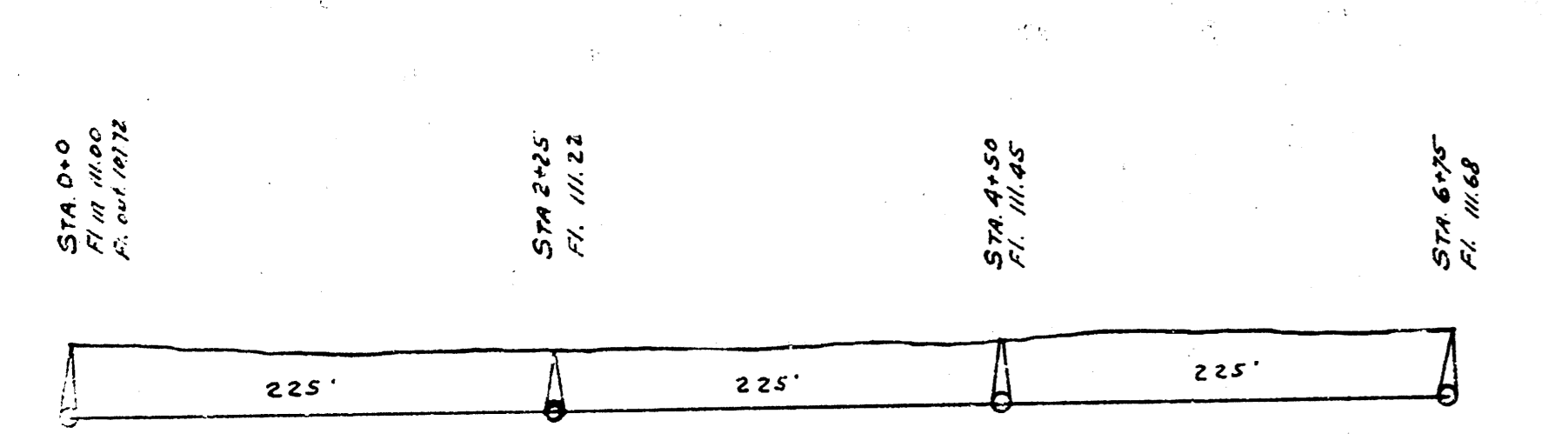
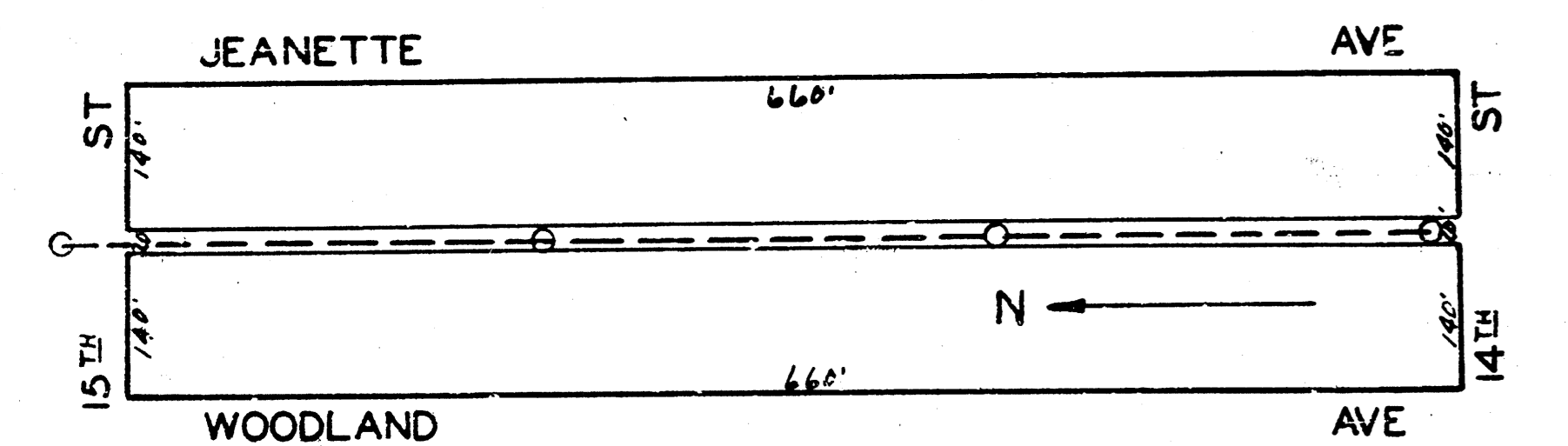


B.M. 12435 C in Campbell ch. opp. end of prop. line  
 100' x 200' 1/2" contour  
 2.M. 13025 + on E. end of S.S. ch. ref. East Main St.



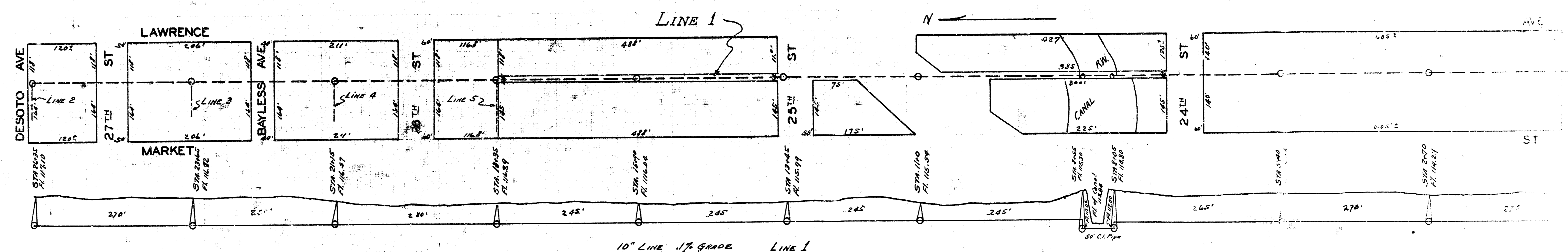
B.M. 10245 36' S.E. cor. Grand + Canal  
 8' x 10' prop. line between C.M. & S.E. Grand + Elm



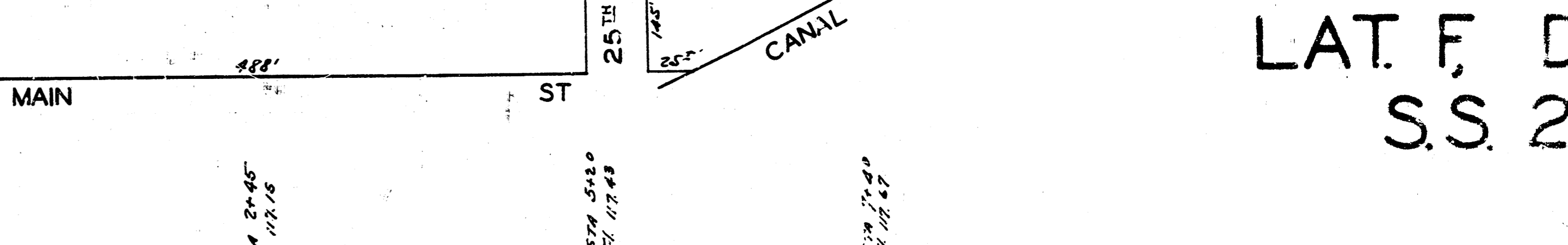
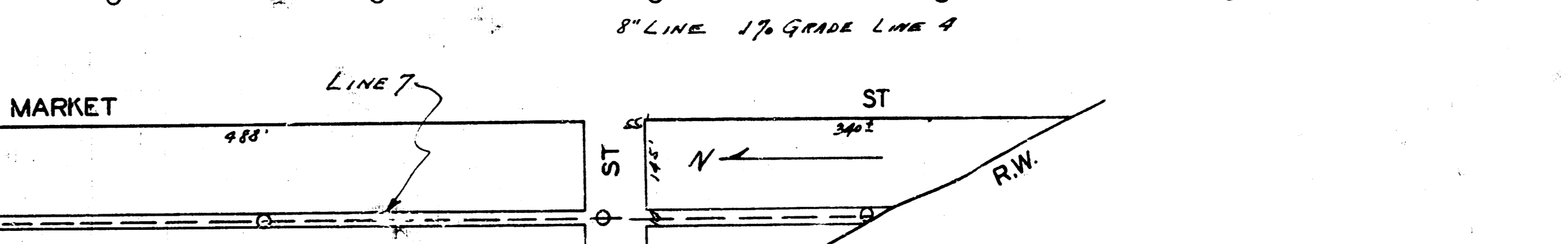
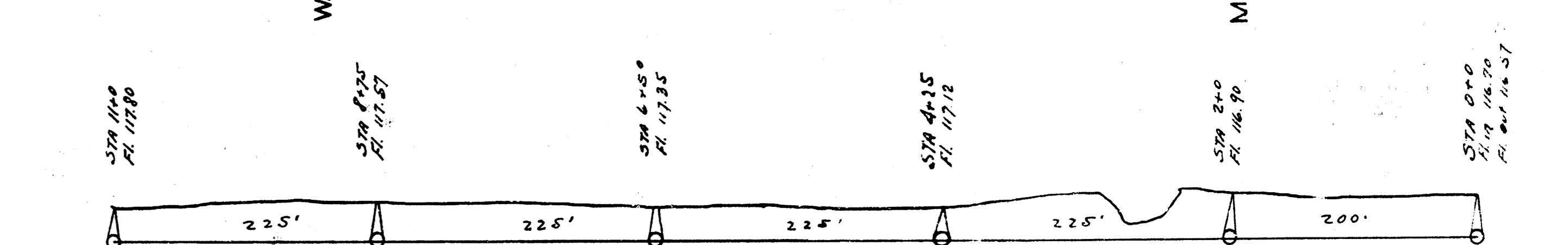
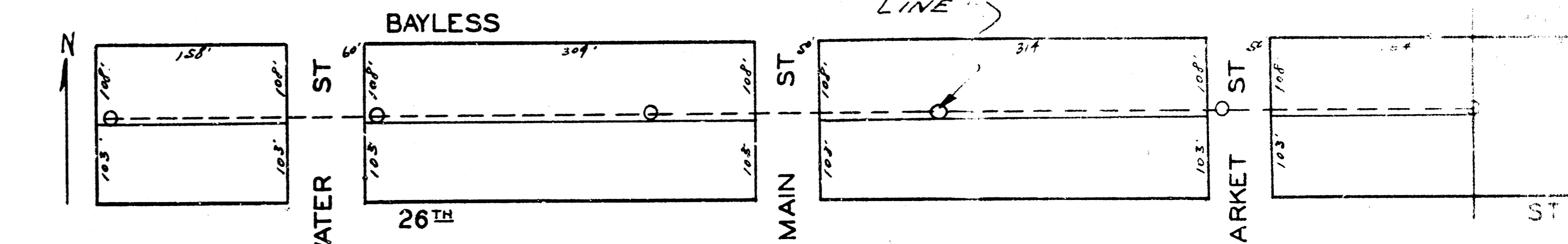
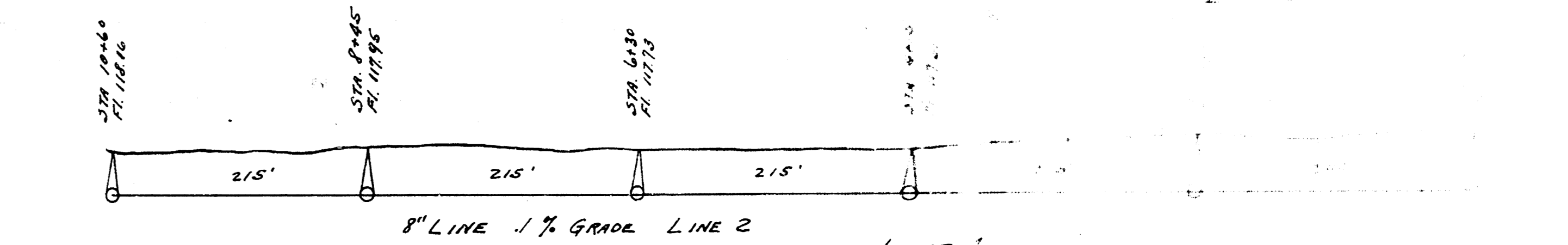
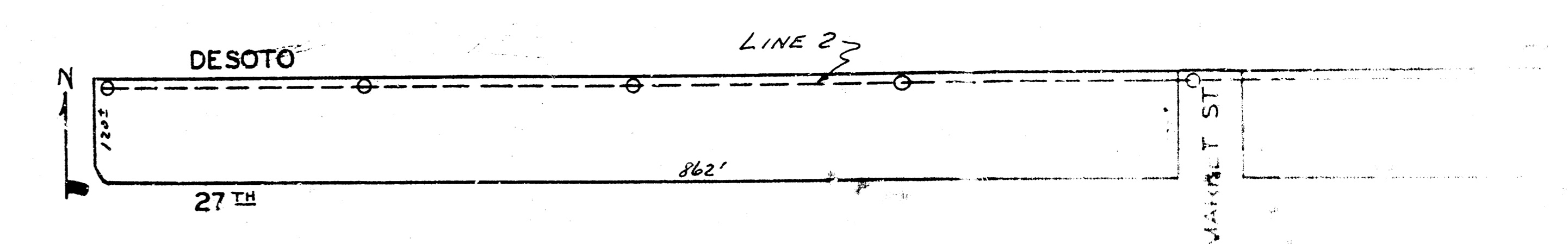
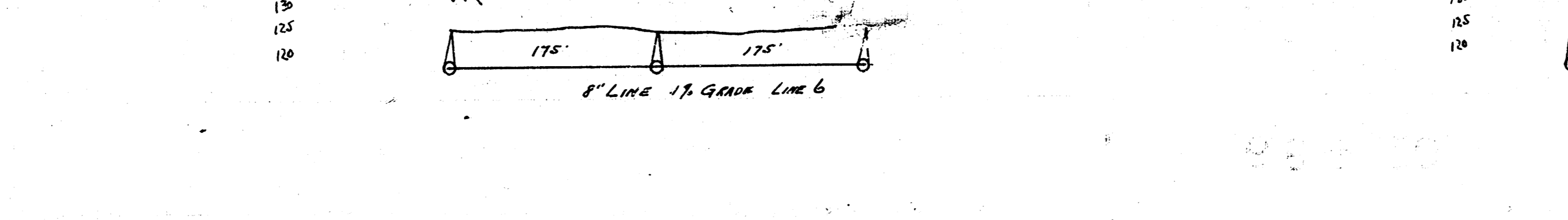
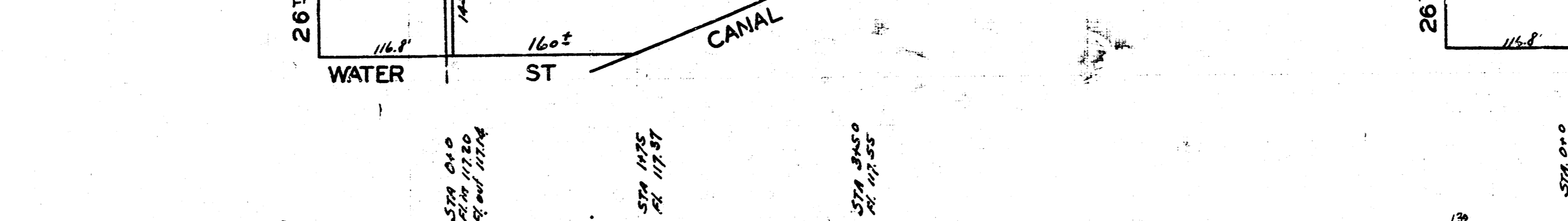
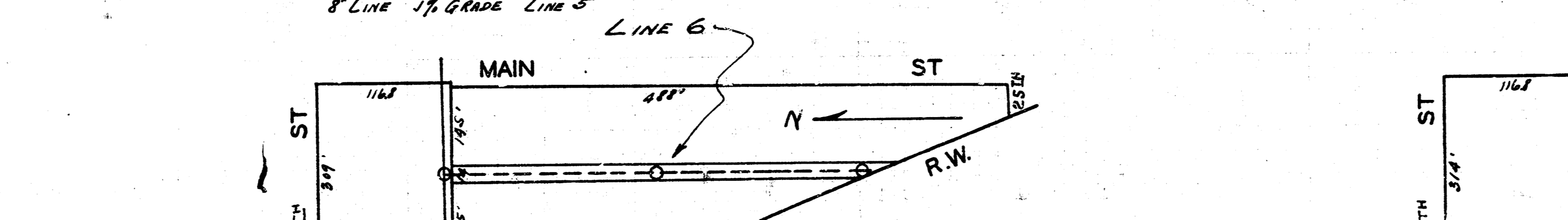
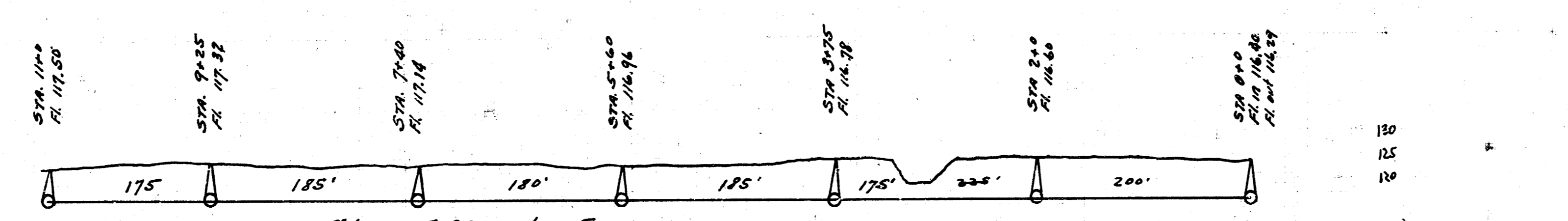
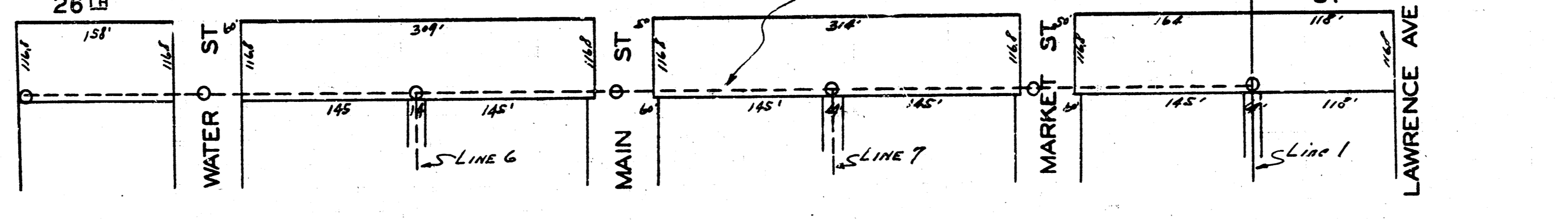
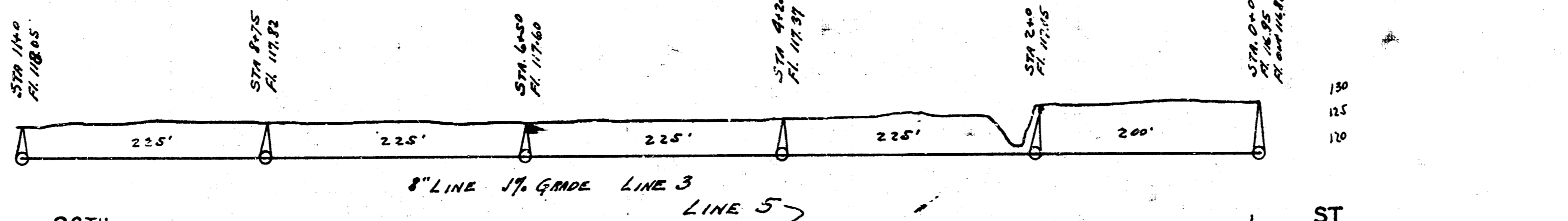
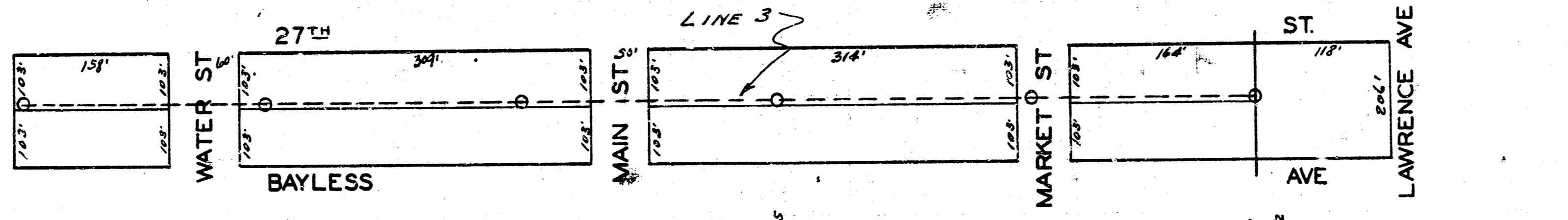
B.M. 11940 K in Keaster back walk north 100' on Woodland - 15.25  
 B.M. 11843 L in Leiferer ch. walk east N.E. on Woodland - 14.12

LAT. 7, DIST. D, S.S. 12.

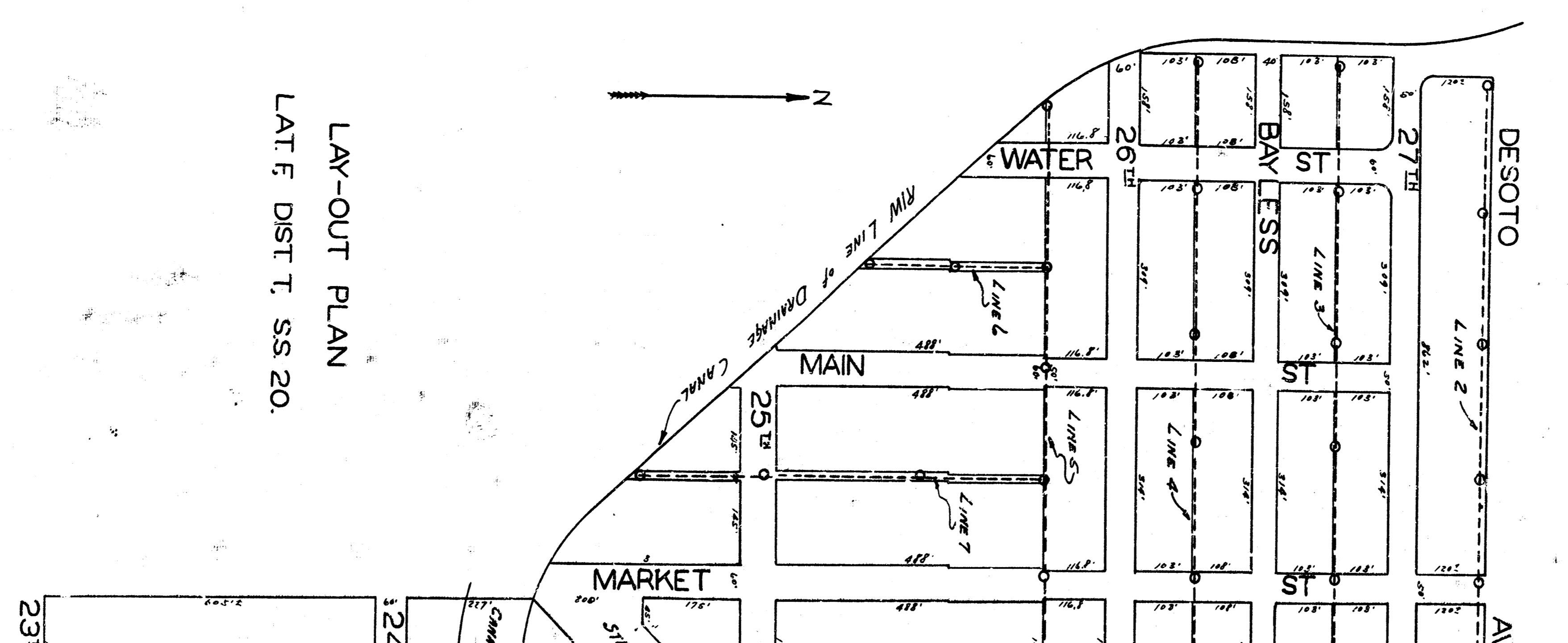
LAT. N, DIST. R,  
 S.S. 20.



10' LINE 1% GRADE LINE 1



LAT. F, DIS  
 S.S. 20



LAY-OUT PLAN  
 LAT. F, DIST. T, S.S. 20.