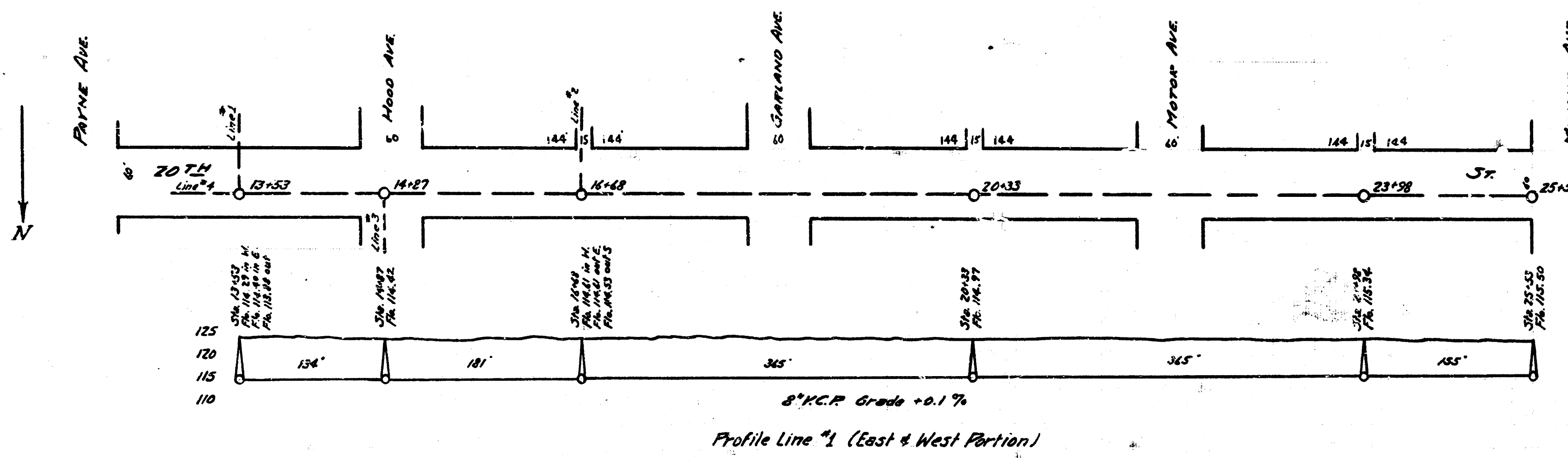
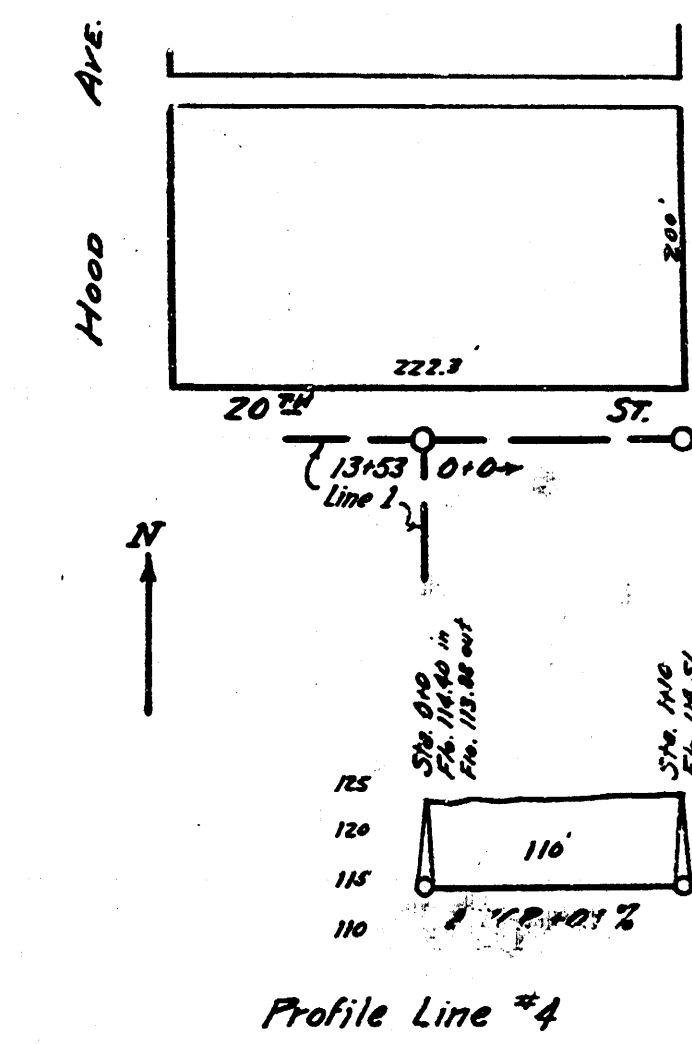
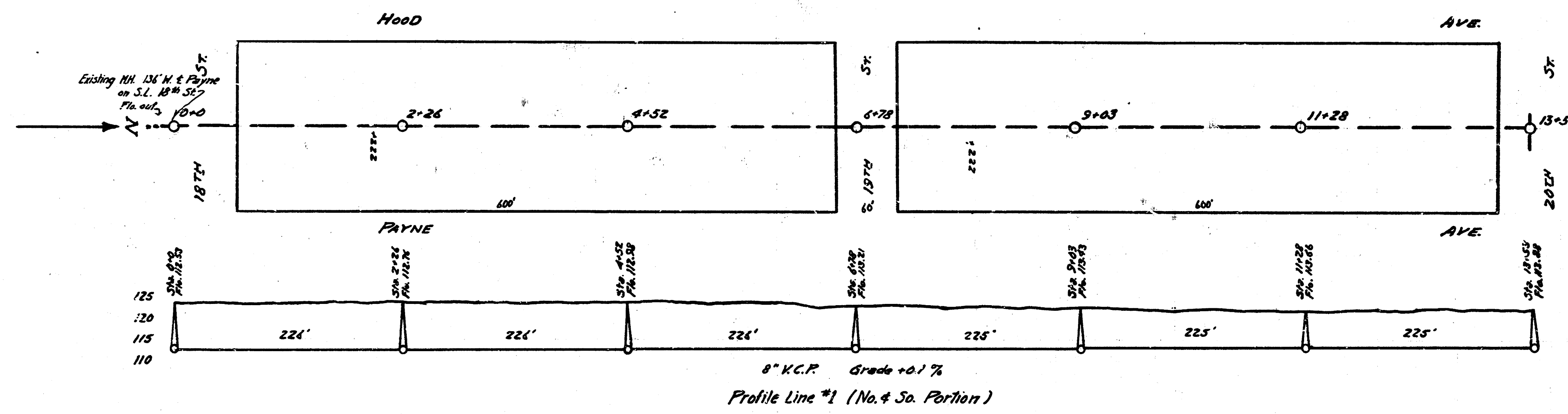
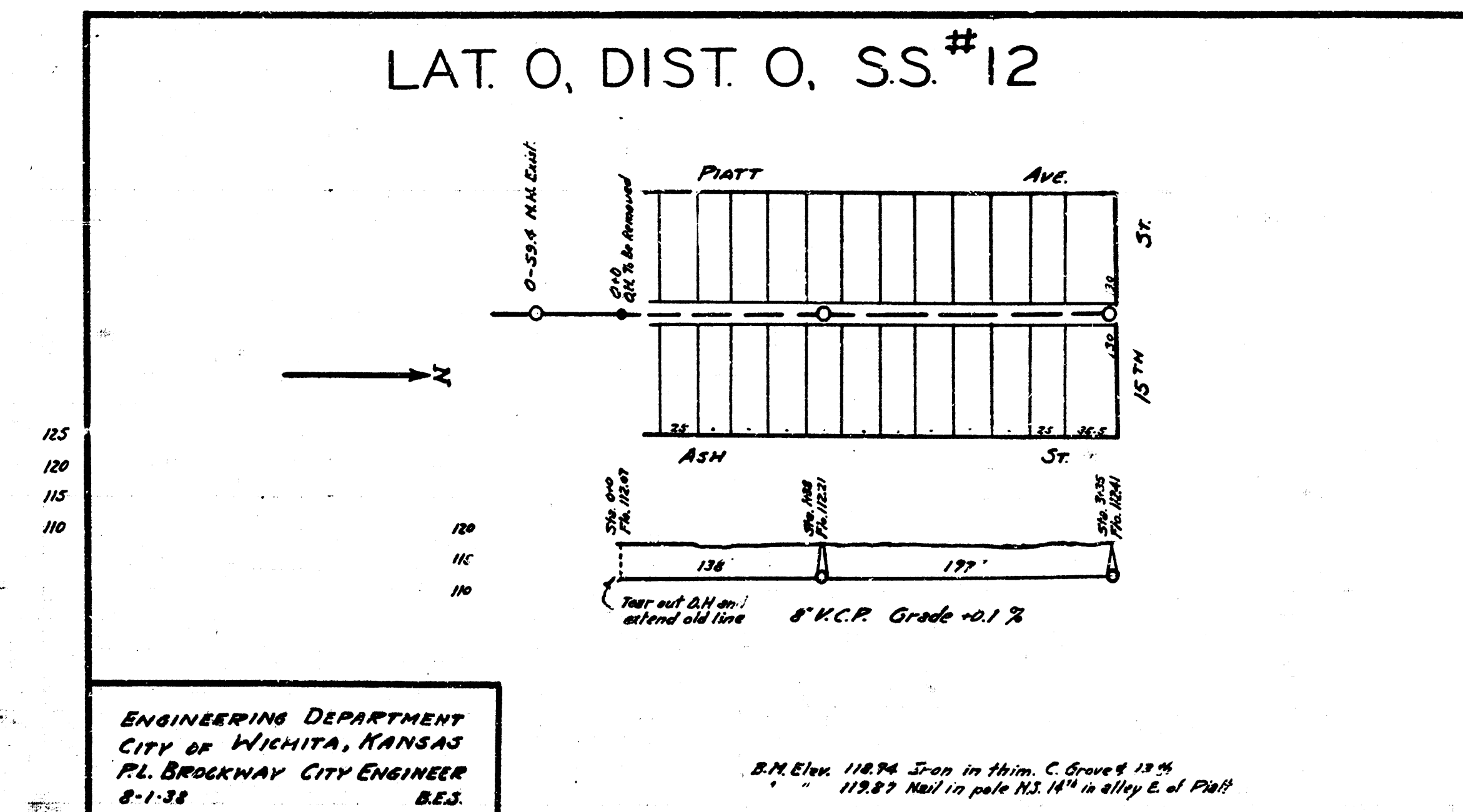


LAT. R, DIST. R, S.S. # 20



LAT. O, DIST. O, S.S. # 12



B.M. Elev. 121.57 Iron in Triangle S.M. cor. Garland & 12th

ENGINEERING DEPARTMENT
CITY OF WICHITA, KANSAS
PL. BROCKWAY CITY ENGINEER
8-1-22

B.M. Elev. 122.24 Iron in Min. C. Corner 12th
122.27 Nail in curb N.E. 1/4 in Alley E. of Platt