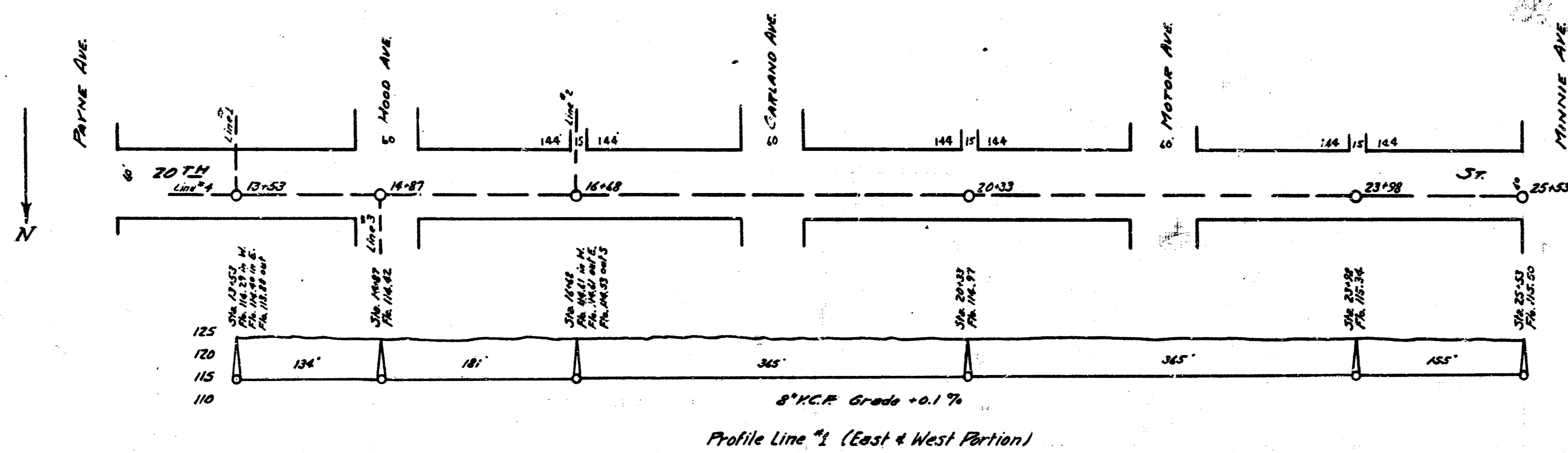
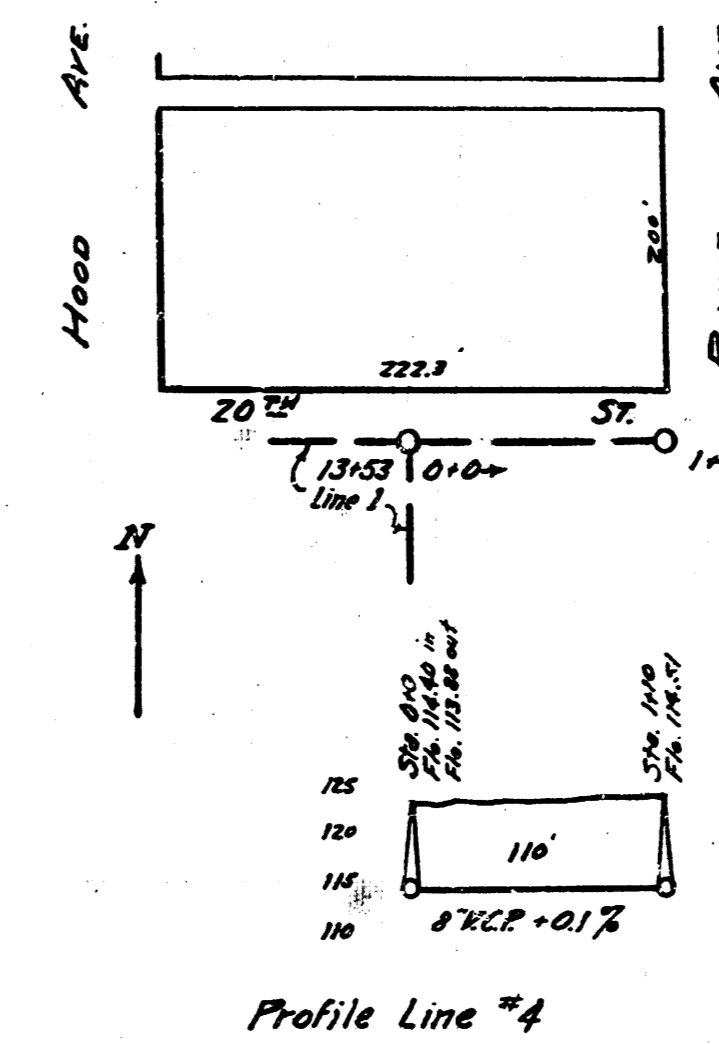
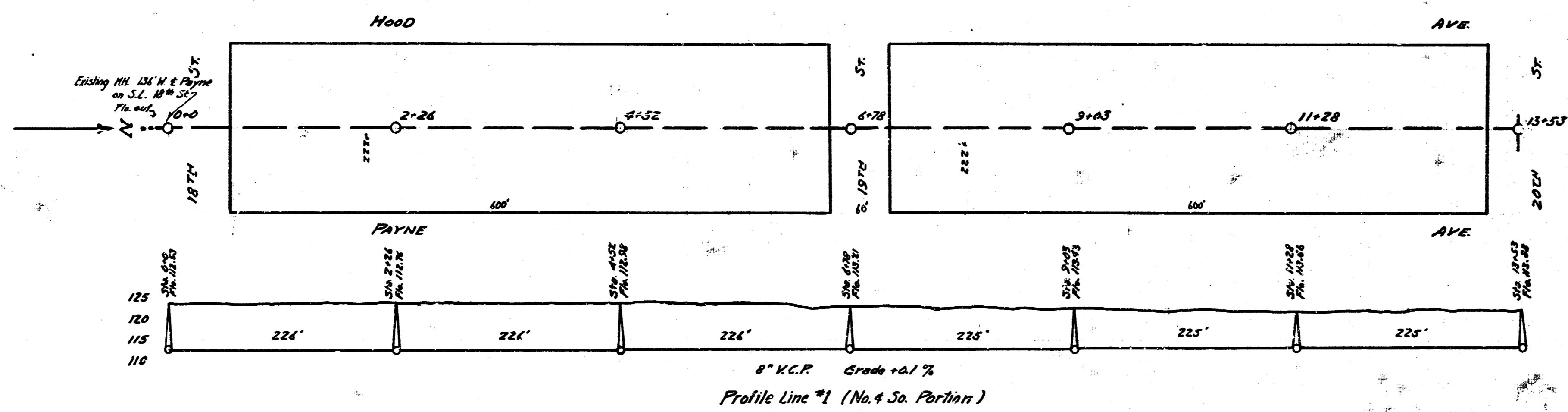
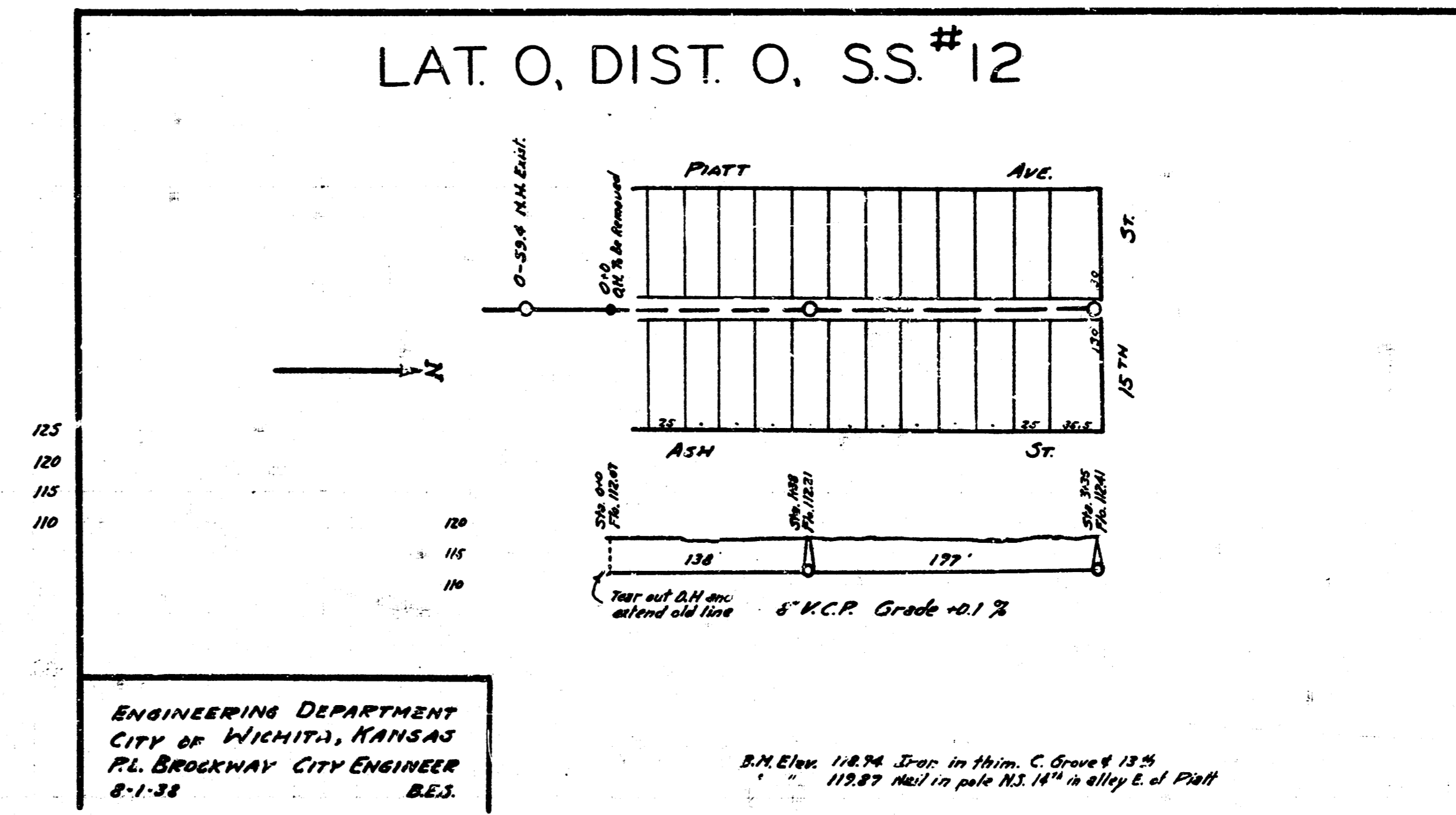


LAT. R, DIST. R, S.S. # 20



LAT. O, DIST. O, S.S. # 12



B.M. Elev. 121.57 Iron in thimble 3.1' on Garland # 199

ENGINEERING DEPARTMENT
CITY OF WICHITA, KANSAS
FL. BROOKWAY CITY ENGINEER
B.E.S.

B.M. Elev. 118.74 Iron in thim. C. Green # 125
118.87 nail in pile 13.14' in ally E. of PIATT
B.E.S.