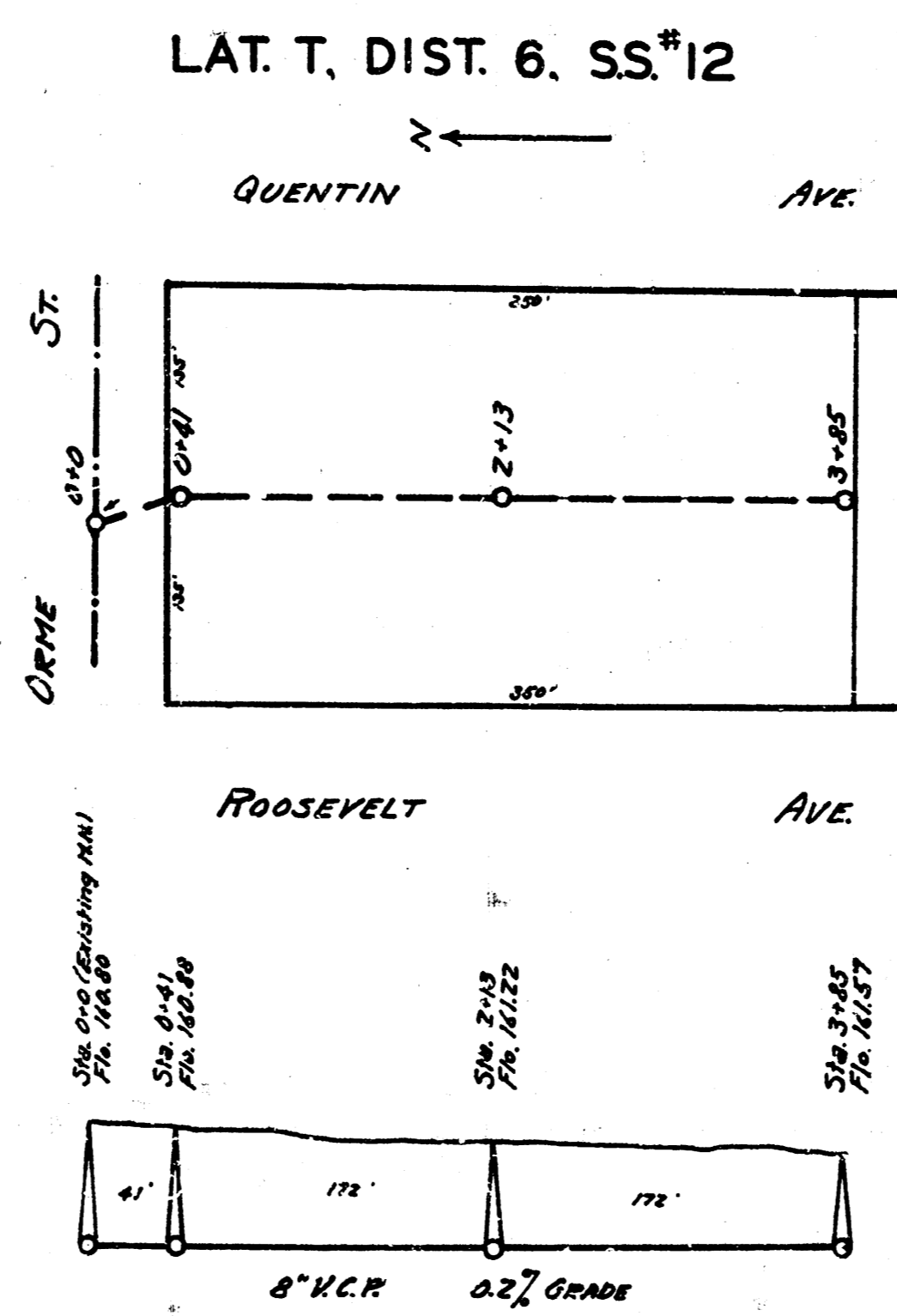
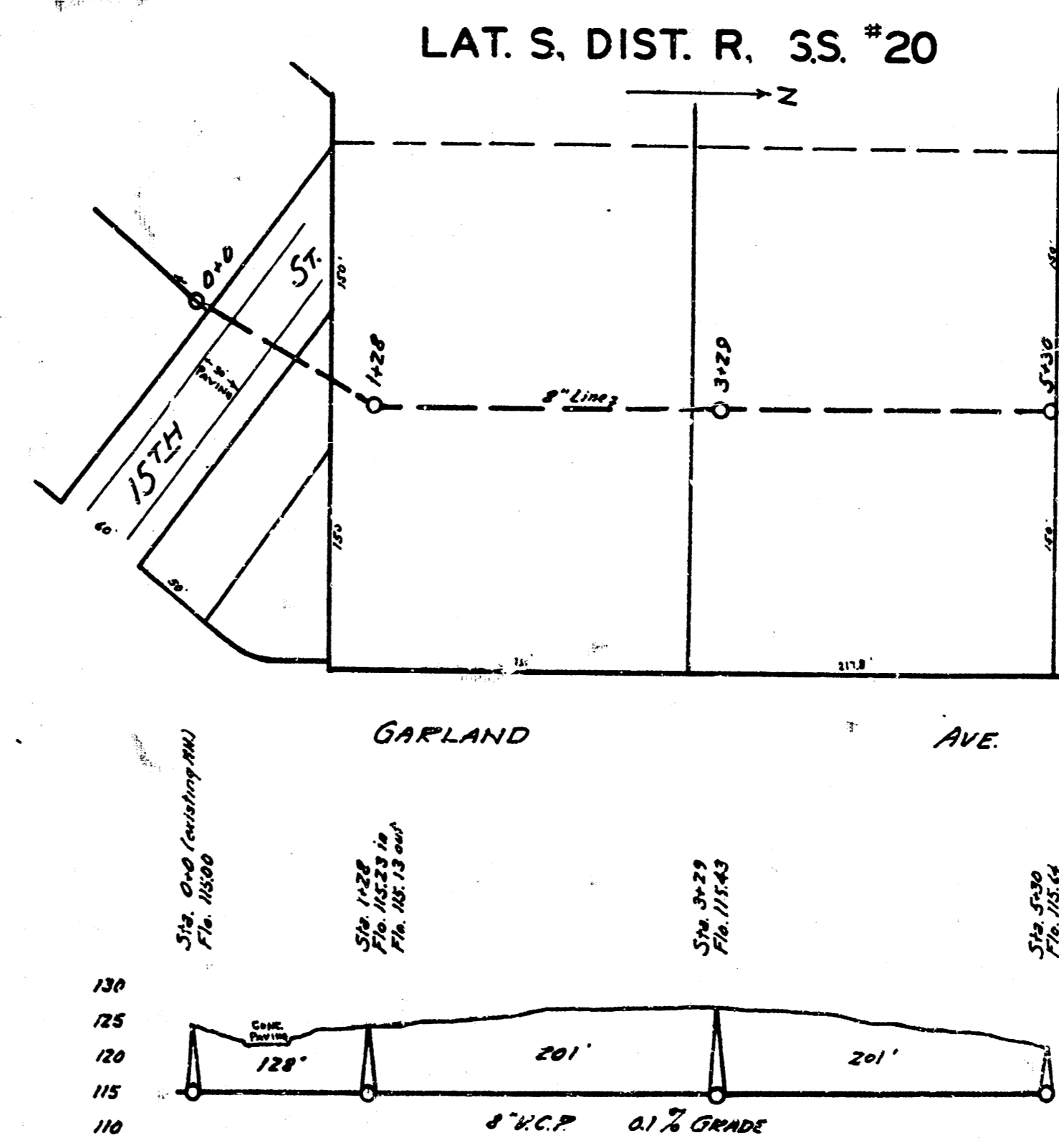


B.M. Elev. 182.09 "to curb 70' W. of Iron S.S. Mordock & C.S. Oliver
200.10 Rim of "H. SPL. #8" bet. Cressway & Terrace Drive



B.M. Elev. 170.93 M.N. Rim M.S. Gaudin & C. Orms



B.M. Elev. 123.81 "to M and curb M.S. Coulters # 15"