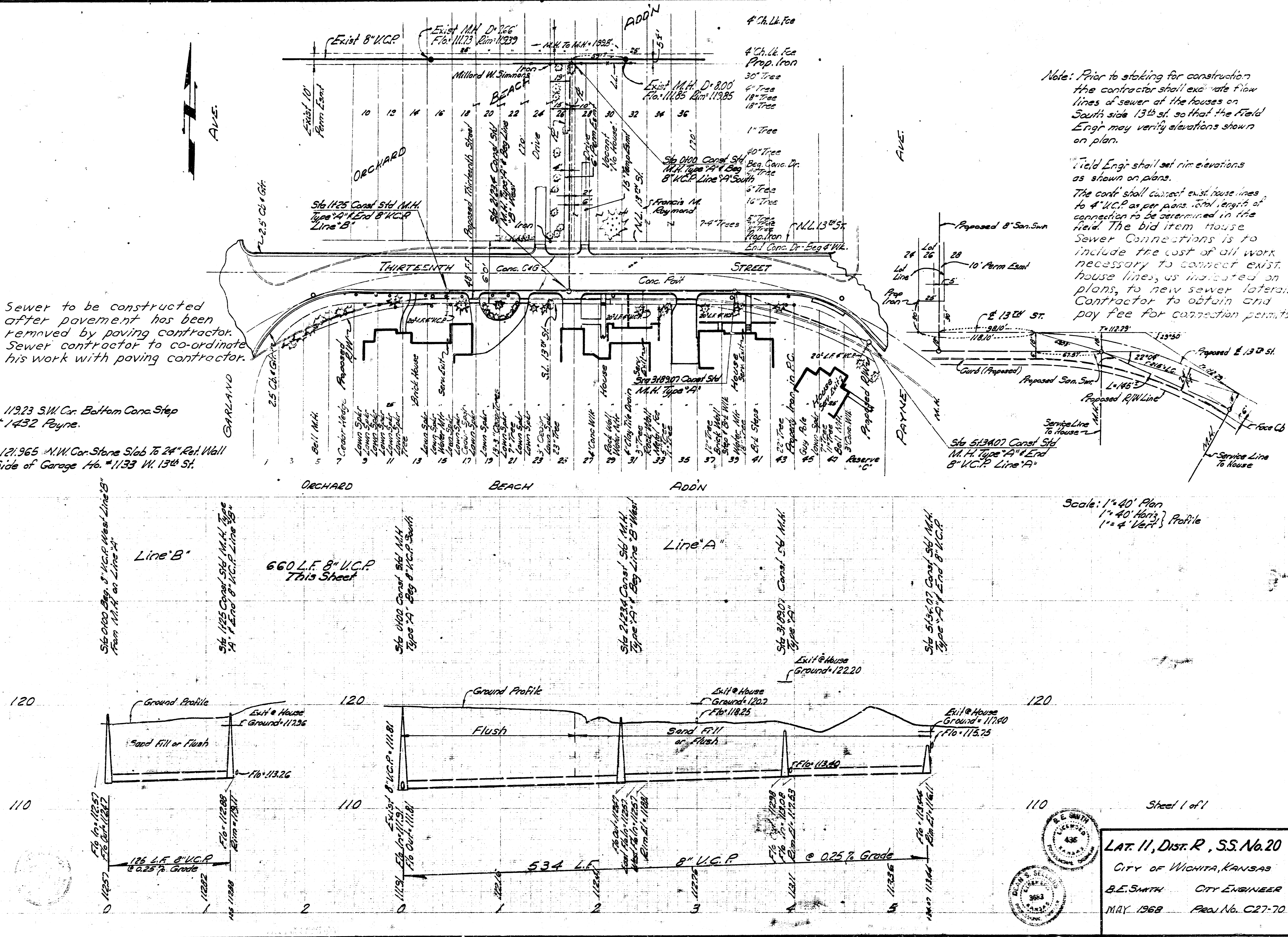


Survey: R.R. Plog, April  
St. A.E.333 P. 106 154

Note: Sewer to be constructed after pavement has been removed by paving contractor. Sewer contractor to co-ordinate his work with paving contractor.

B.M. 11323 S.W. Cor. Bottom Conc. Step  
Ht. = 1432 Payne.

B.M. 121,965 N.W. Cor. Stone Slab To 24" Ret. Wall  
@ E. Side of Garage Ht. = 1133 W. 13th St.



Note: Prior to staking for construction the contractor shall excavate flow lines of sewer at the houses on South side 13th st. so that the Field Engr. may verify elevations shown on plan.

Field Engr. shall set rim elevations as shown on plans.  
The cont. shall connect exist. house lines to 8" U.C.P. as per plans. Total length of connection to be determined in the field. The bid item house Sewer Connections is to include the cost of all work necessary to connect exist. house lines, as indicated on plans, to new sewer lateral. Contractor to obtain and pay fee for connection permits.

Scale: 1" = 40' Plan  
1" = 40' Horiz. Profile  
1" = 4' Vert.

Sheet 1 of 1  
LAT. 11, DIST. R, S.S. No. 20  
CITY OF WICHITA, KANSAS  
B.E. SMITH CITY ENGINEER  
MAY 1968 Proj. No. C27-70