

GENERAL NOTES

1. The new lift station shall be installed East of, and using the existing wet well built in 1926.
2. The lift station shall be constructed without interference of pumping operation of the existing station #2.
3. Existing electric facilities such as conduits, switch boxes, lamps, sump pump in station #2, etc., shall be salvaged & hauled to the city materials yard.
4. Existing pumps in both stations shall be removed and hauled to the city materials yard for storage.
5. Cost of items "by others" shall be included in price bid for purchase and installation of lift station as per plan on sheet #2.
6. Station #2 shall have the walls cut 2 feet below the natural ground. The hole shall be sand filled by jetting to within 1 foot of the natural surface where compacted top soil shall be placed up to the ground level. All waste material shall be removed from the job site & disposed of by the contractor.
7. Electrical conduit shall have a 3"x3" concrete encasement with a bond wire parallel to the conduit pipe as shown on detail.
8. Payment for salvage & hauling of all items such as steel grates, shafts, motors, pumps, piping, steel drier, etc., shall be an incidental bid included in the lump sum price for the pump station removal.
9. Removal of un-salvageable 6" C.I.P. extending East from the wet well shall be an incidental bid included in lump sum price for the station removal.
10. Concrete slabs, encasement of conduit, electrical wiring from Lift Station to service pole, service pole, meter, loop and conduit shall be incidental bid items included in price bid for the station.
11. The contractor shall notify K.G.T.E. for temporary electrical power to station #2 prior to start of construction.
12. Cost for the wet connection from the station to the wet well shall be included in the price bid for furnishing & installation of pump station.
13. The contractor shall compact soil or place sand fill the entire length of the pipe main. Cost shall be included in price bid for furnishing & installation of pump station.

B.E. SMITH, CITY ENGINEER
JUNE 10, 1968

PUMPING STATION # 55, IN CONNECTION WITH SUB. # 12, S.S. No. 20
CITY OF WICHITA, KANSAS
B.E. SMITH, CITY ENGINEER
1968 PER. No. U-32

Scale: 1"=40' Plan
1"=40' Vert. Profile
1"=4' Horiz.

Young
1967

B.M. 11925 N. End. Pad. Cb.
N.E. Cor. 15th & Arkansas

Note: Exercise caution so not to disturb exist. diach. line station #2.

DETAIL EXIST. LIFT STATION

Little Arkansas River

Exist. Well Floor = 102.54
Manhole E. Rim = 121.42
Depth = 18.88'

8" x 12" W.C.P. Conc. Encased Across Little Ark. River

Station #1
Station #2

North Side
Manhole
Wet Well
Wet Well to Use

Station #1
Station #2

Station #1
Station #2

Station #1
Station #2

Station #1
Station #2

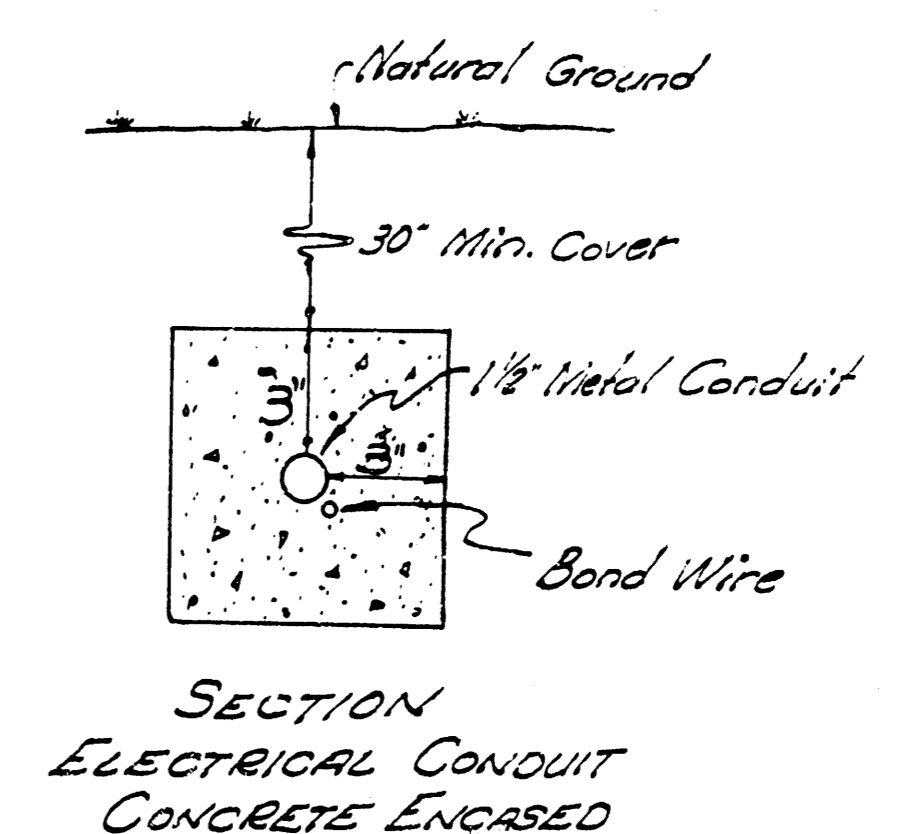
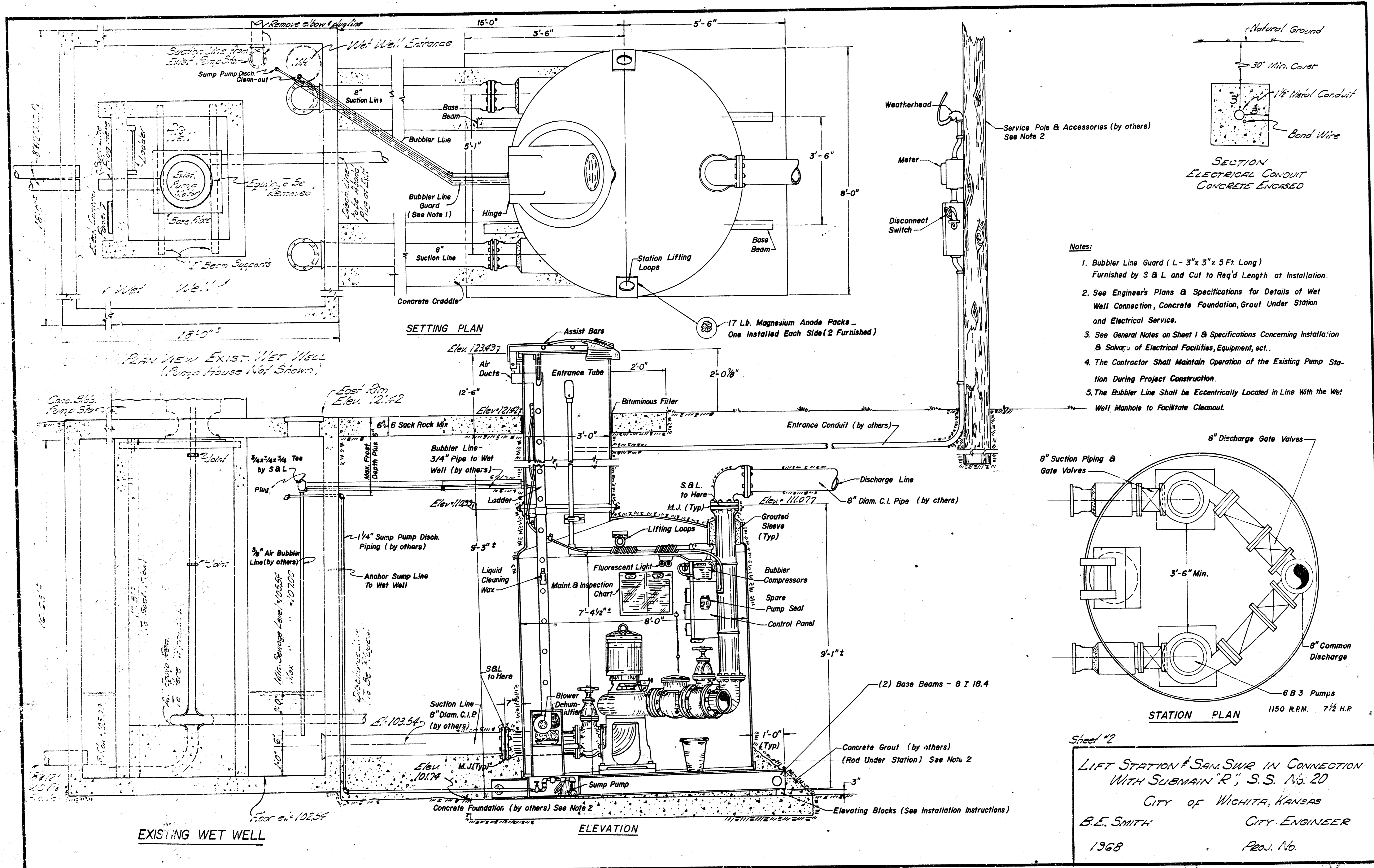
Station #1
Station #2

Station #1
Station #2

Station #1
Station #2

Station #1
Station #2

Station #1
Station #2



- Notes:**
1. Bubblers Line Guard (L - 3"x 3" x 5 Ft. Long) Furnished by S & L and Cut to Req'd Length at Installation.
 2. See Engineer's Plans & Specifications for Details of Wet Well Connection, Concrete Foundation, Grout Under Station and Electrical Service.
 3. See General Notes on Sheet 1 & Specifications Concerning Installation & Service of Electrical Facilities, Equipment, ect..
 4. The Contractor Shall Maintain Operation of the Existing Pump Station During Project Construction.
 5. The Bubblers Line Shall be Eccentrically Located in Line With the Wet Well Manhole to Facilitate Cleanout.

Sheet #2
 LIFT STATION & SAN. SWIR IN CONNECTION WITH SUBMAIN "R", S.S. No. 20
 CITY OF WICHITA, KANSAS
 B.E. SMITH CITY ENGINEER
 1968 Proj. No.