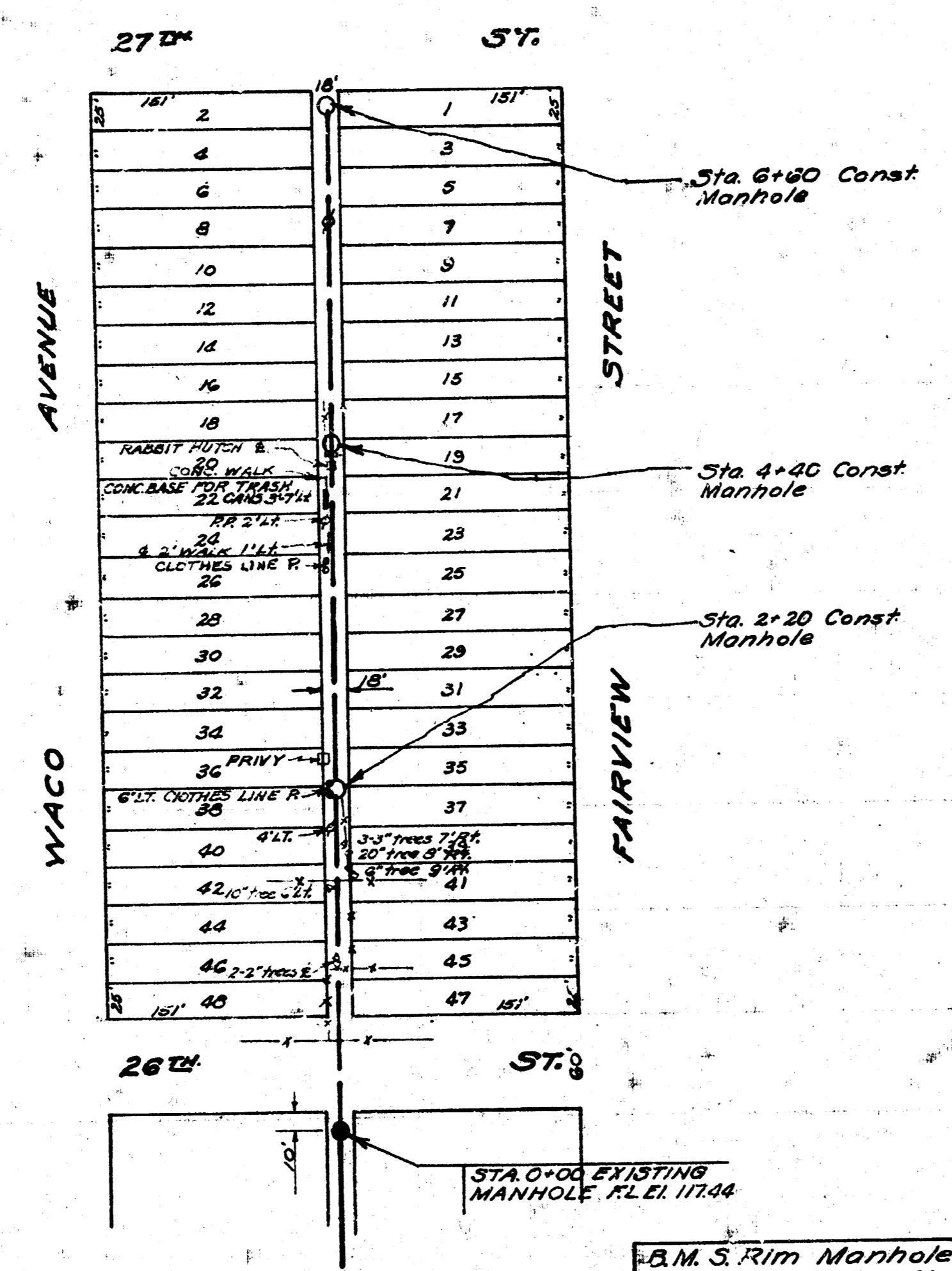


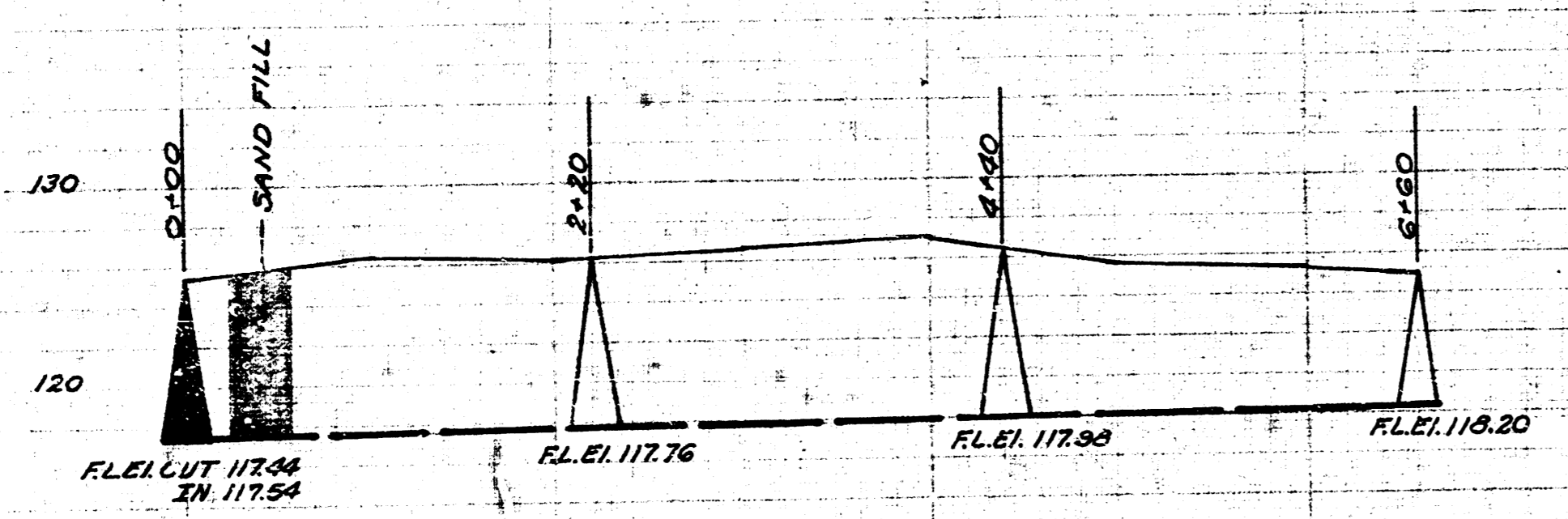
SAND BACKFILL TRENCH
STA. 0+23 TO STA. 0+57



B.M. R in Rowe N.S. Walk N.W. Cor. Waco & 25th St. El. 125.46

B.M. S. Rim Manhole Sta. 0+00 El. 123.41

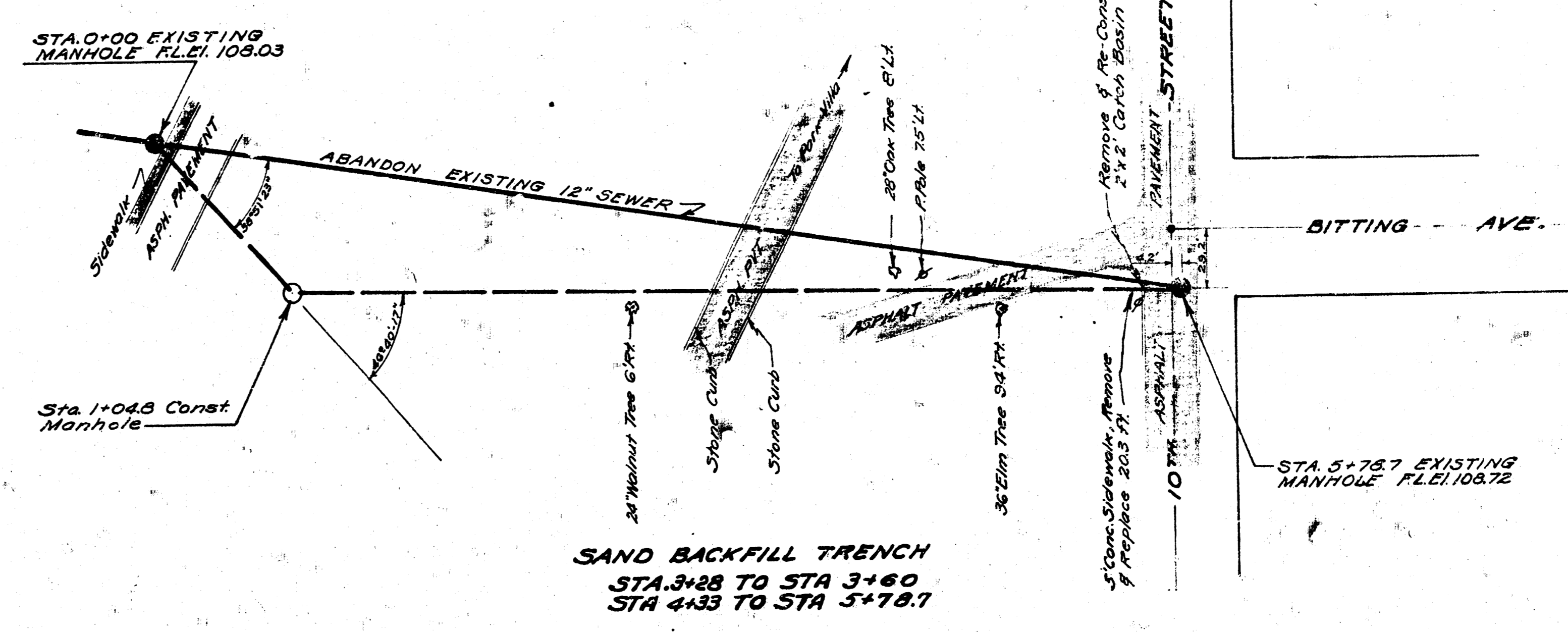
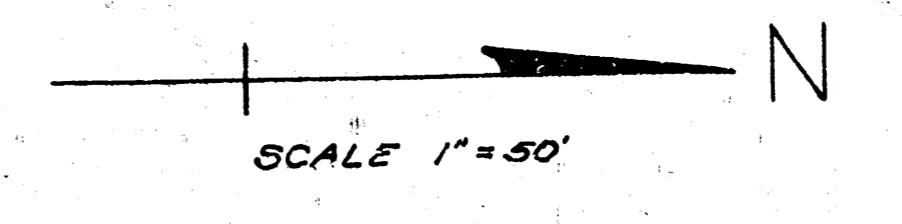
SCALE 1" = 80' Horiz.
1" = 6' Vert.



LAF. U. DIST. 7. MAIN 20
CITY OF WICHITA KANSAS
L. WHITE, CITY ENGINEER
Proj. No. C21-66

Date 11-7-51
Drawn by J.L.A.
Checked by
Note Book No. 5-3

NORTH RIVERSIDE PARK

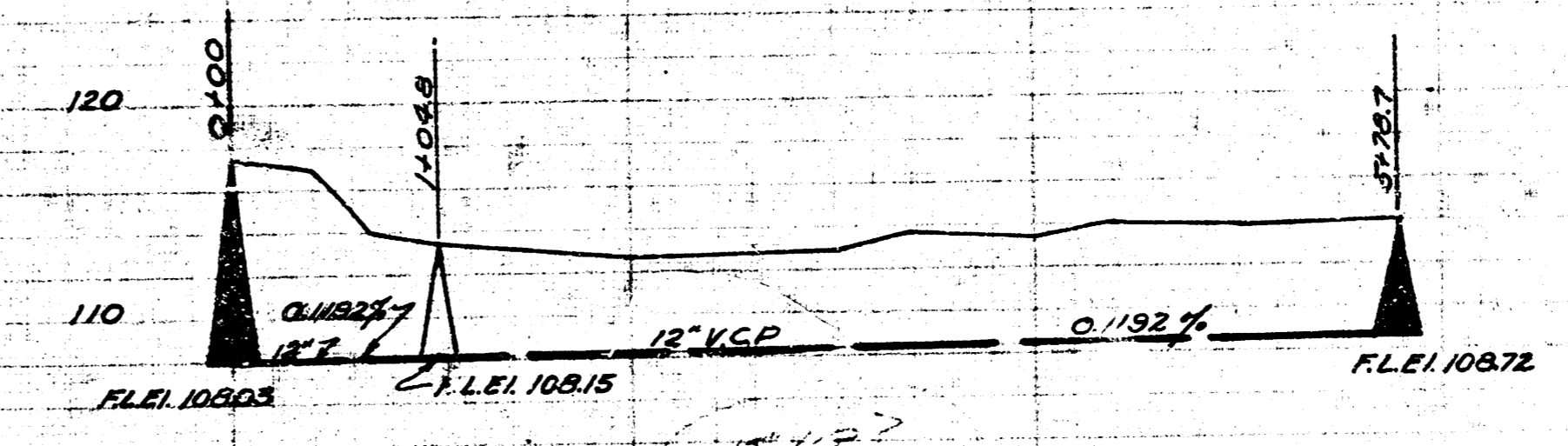


B.M. N. Rim Manhole Sta. 0+00 El. 117.38

B.M. S. Rim Manhole Sta. 5+78.7 El. 118.12

B.M. Iron in Thimble SW Cor. Wiley & River Blvd. El. 114.00

SCALE 1" = 30' Horiz.
1" = 6' Vert.
NOTE BOOK J61



RE CONSTRUCT
CITY OF WICHITA KANSAS
L. WHITE, CITY ENGINEER
Proj. No. C21-66
11/7/51

11/7/51