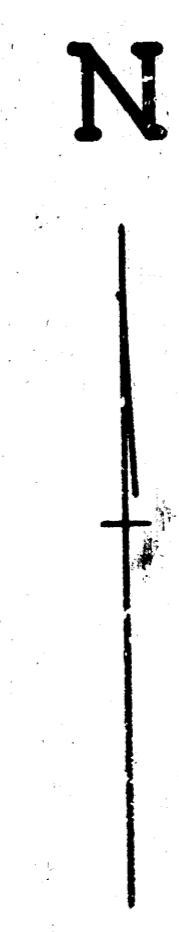
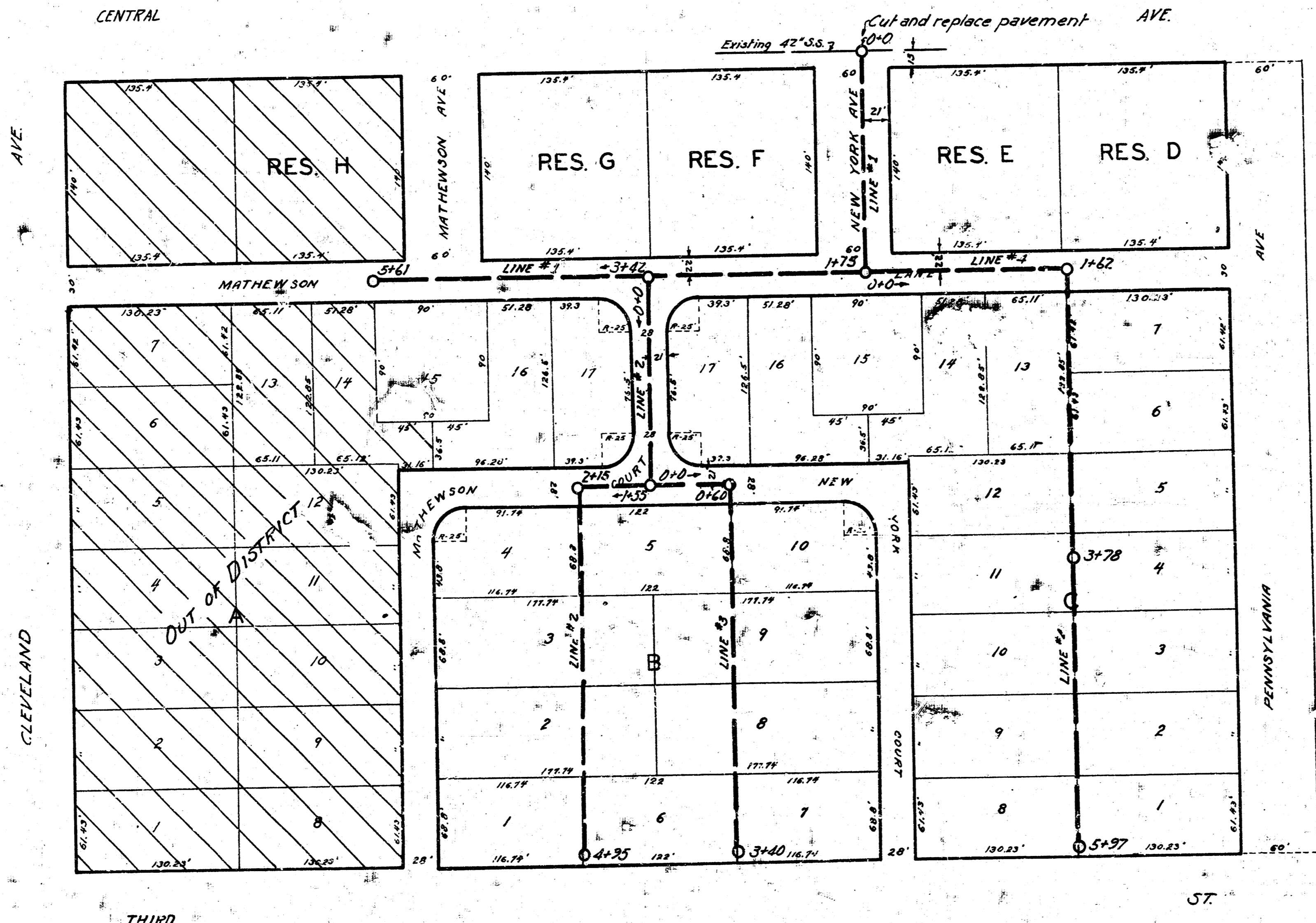


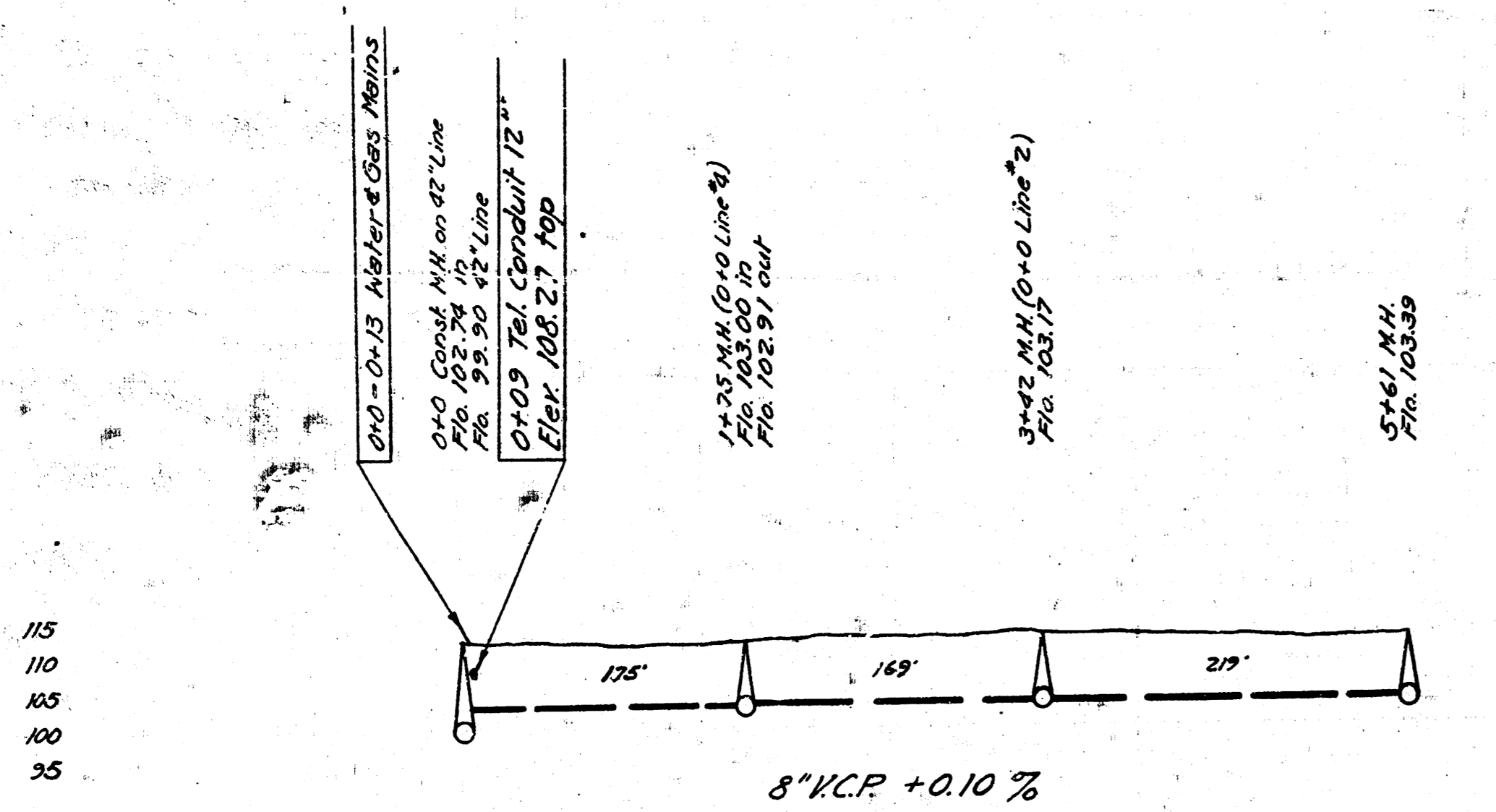
LAT. 2, DIST. Y, S.S. # 20  
 WICHITA, KANSAS



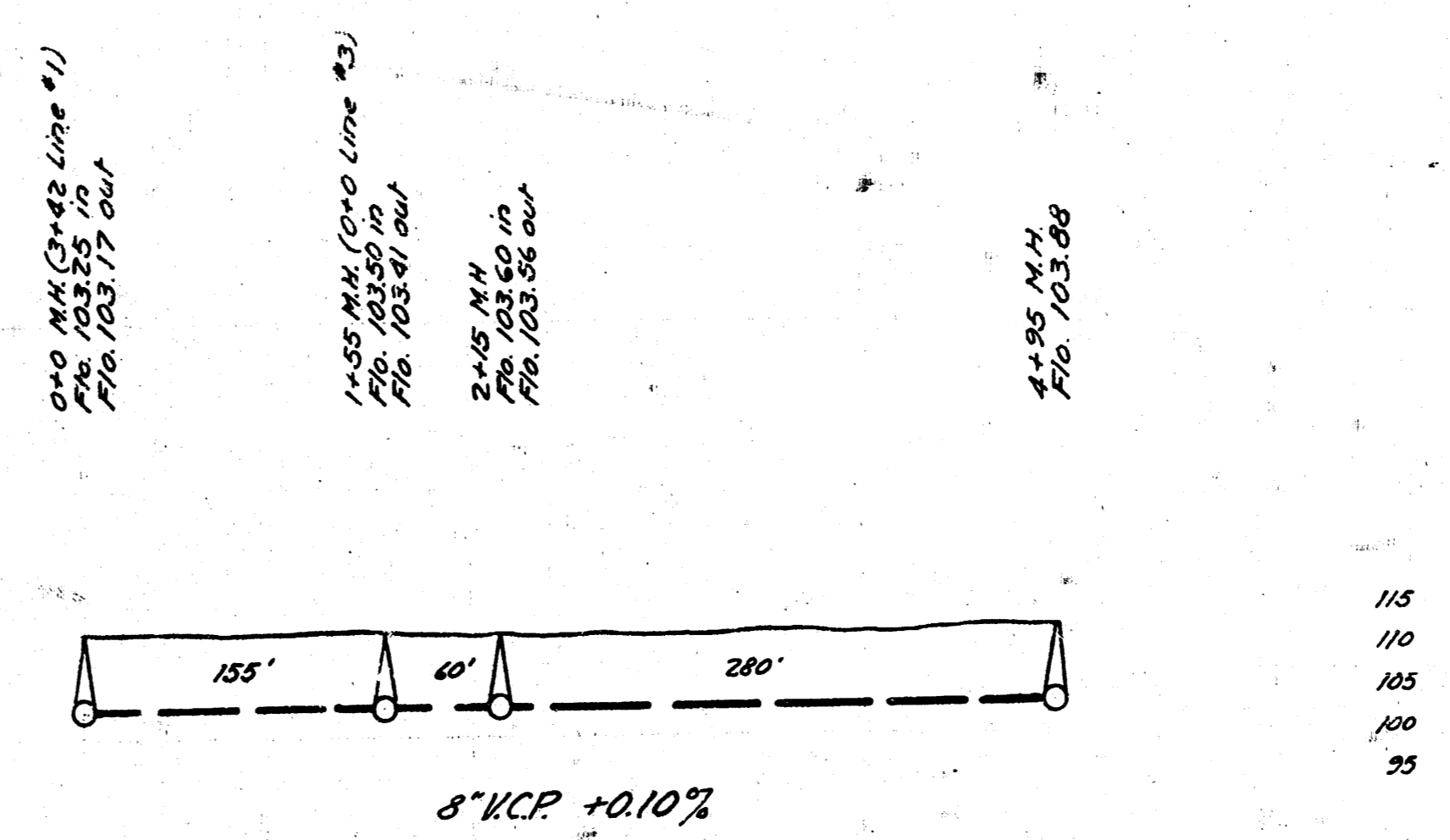
Construction Note: All lines located in Mathewson Lane, Mathewson Court and New York Court are to be built on the south or east 1/2 line of the right of way.

ENGINEERING DEPARTMENT  
 CITY OF WICHITA, KAN.  
 P.L. BROCKWAY CITY ENGINEER  
 B.E. SMITH ENGINEER OF DESIGN  
 MARCH 1942 SCALE 1"=6'

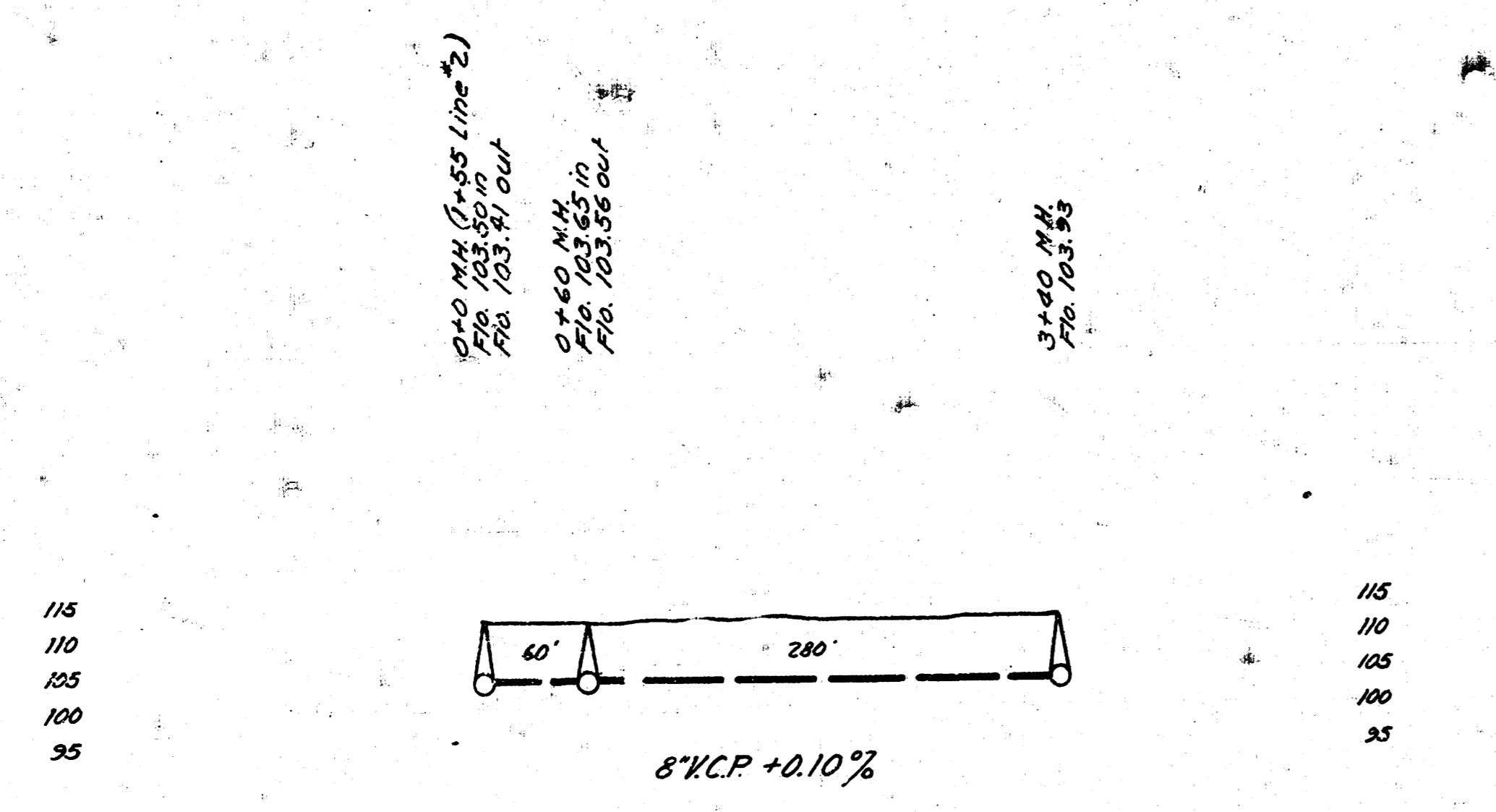
Sheet #1 of 2 sheets



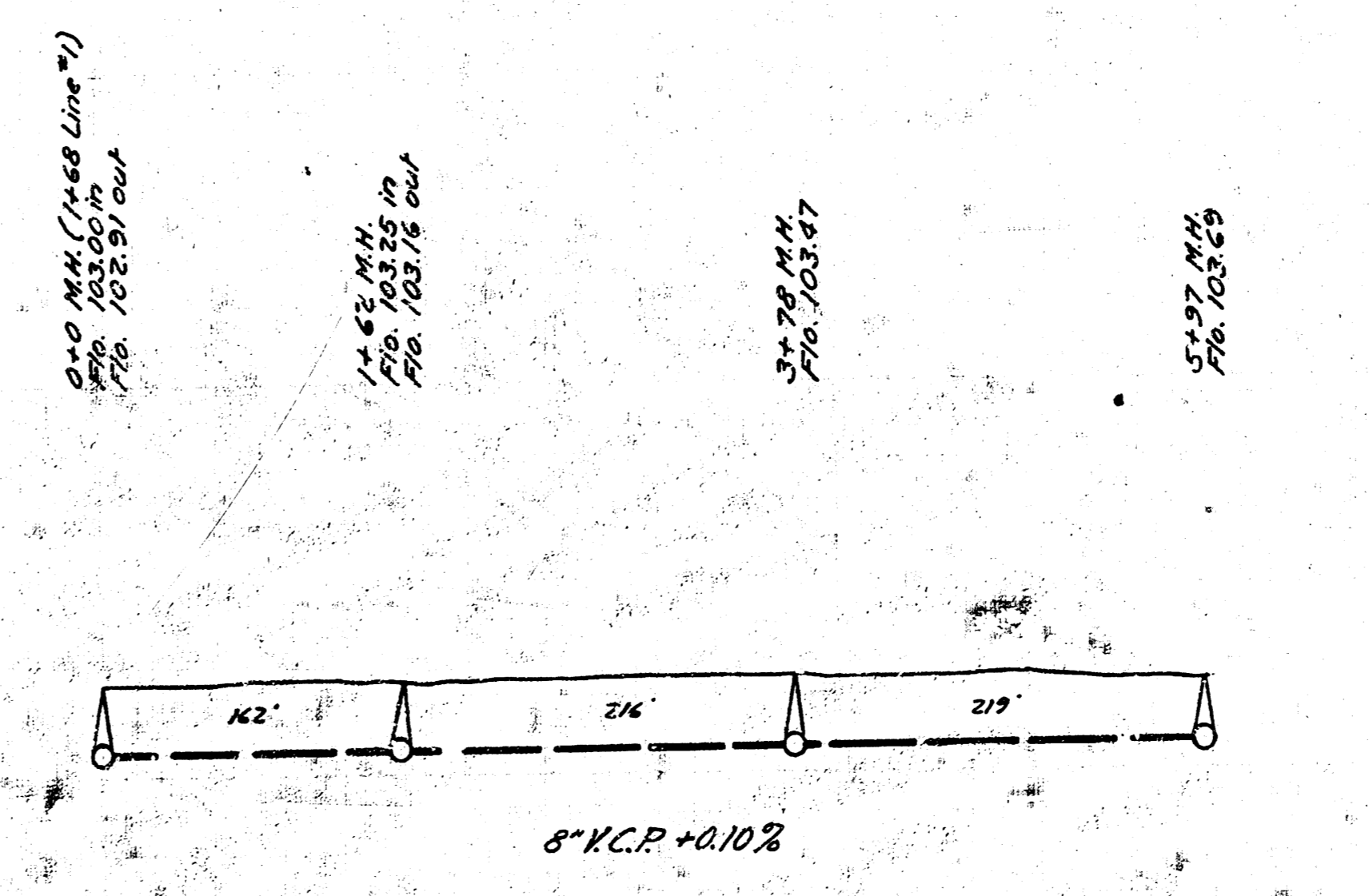
LINE 1



LINE 2



LINE 3



LINE 4

B.M. Elev. 111.43 Standard S.E. Cor. Hydraulic Av. & Central Av.  
112.51 "H" in Hurst on Lug S.E. Cor. New York & Central

LAT. 2, DIST. Y, S.S. #20  
WICHITA, KANSAS