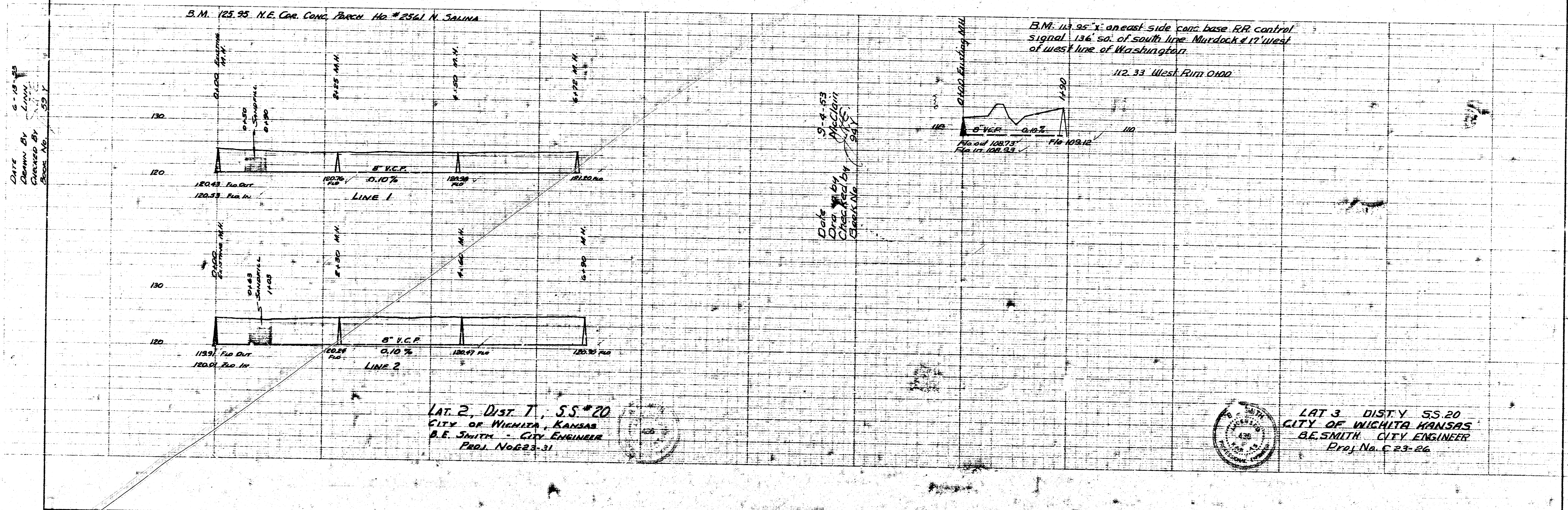
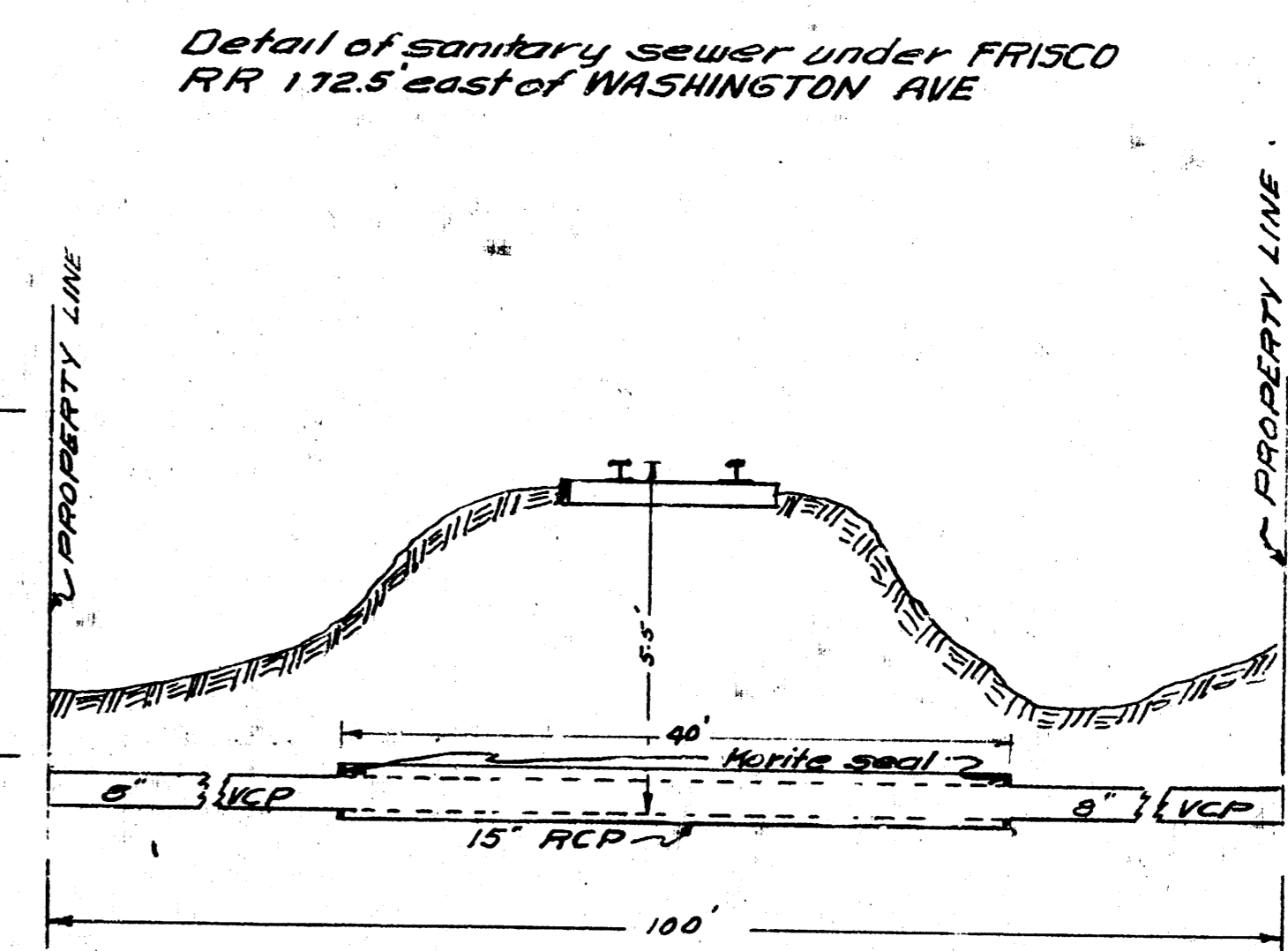
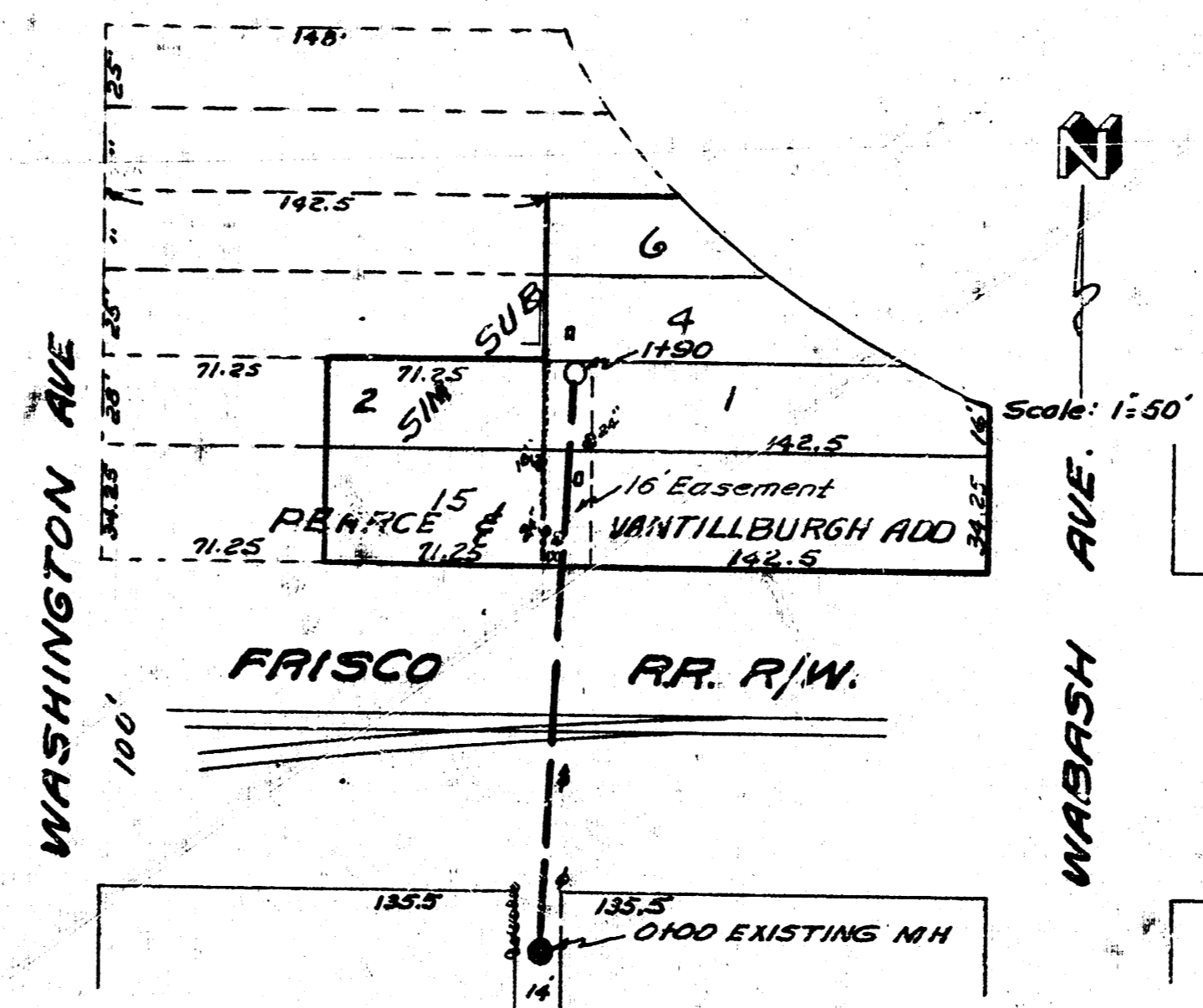
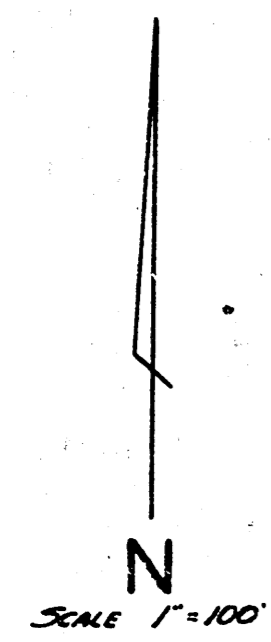
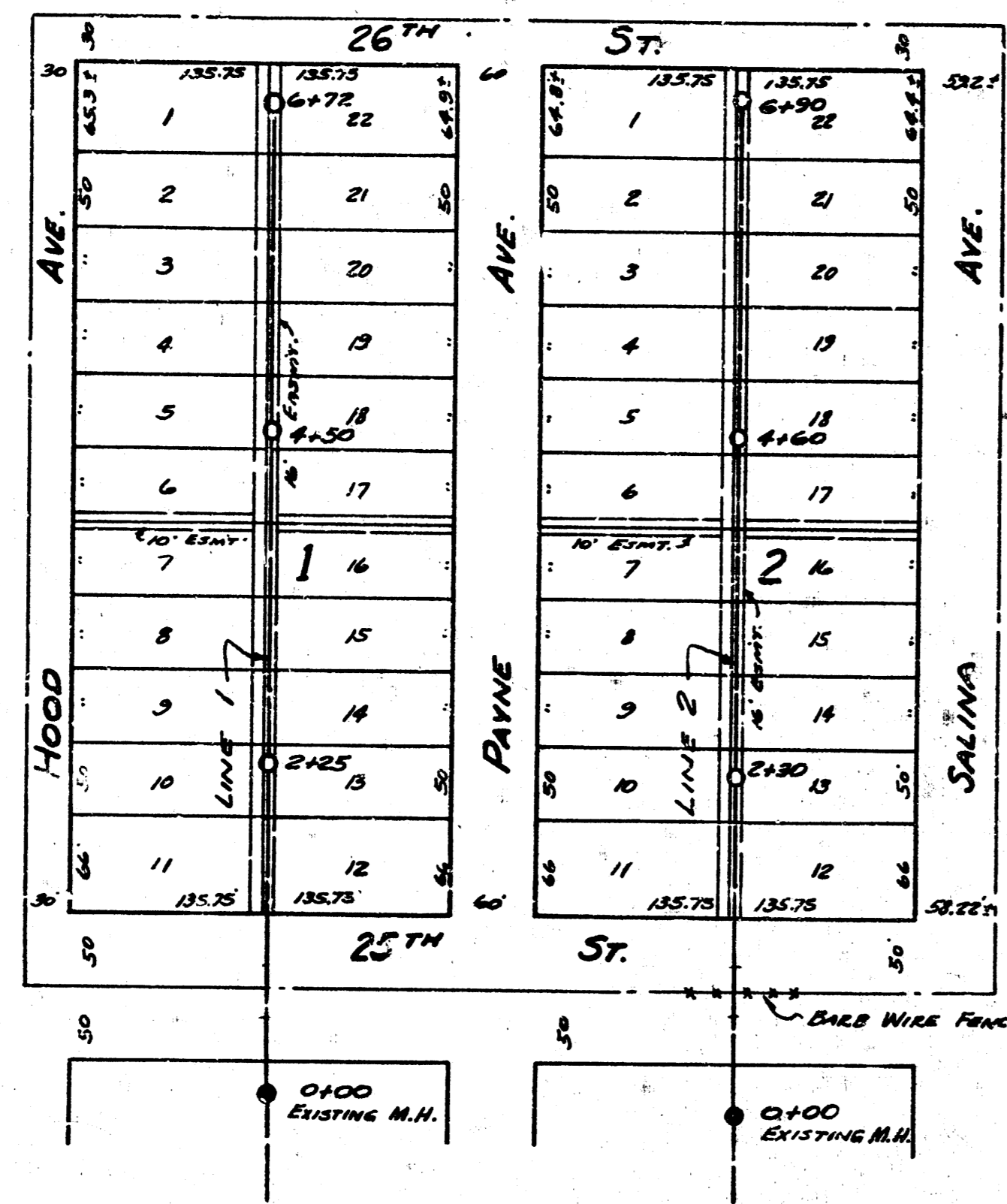


REPLAT OF BUILDER'S 9TH ADDN.



DATE 5-18-83
 DRAWN BY L. W. ...
 CHECKED BY ...
 PROJ. NO. 55-1

DATE 5-4-83
 DRAWN BY ...
 CHECKED BY ...
 PROJ. NO. 55-1

B.M. 112.33 West Run 0100
 B.M. 112.95 N.E. Cor. Conc. Bldg. Ho. # 2561 N. Salina
 B.M. 113.95' on east side conc. base RR control signal 136' so. of south line Murdock # 17' west of west line of Washington

LAT 2, DIST 7, S.S. # 20
 CITY OF WICHITA, KANSAS
 B.E. SMITH - CITY ENGINEER
 PROJ. NO. 623-31

LAT 3, DIST 55.20
 CITY OF WICHITA, KANSAS
 B.E. SMITH - CITY ENGINEER
 PROJ. NO. C 23-26

