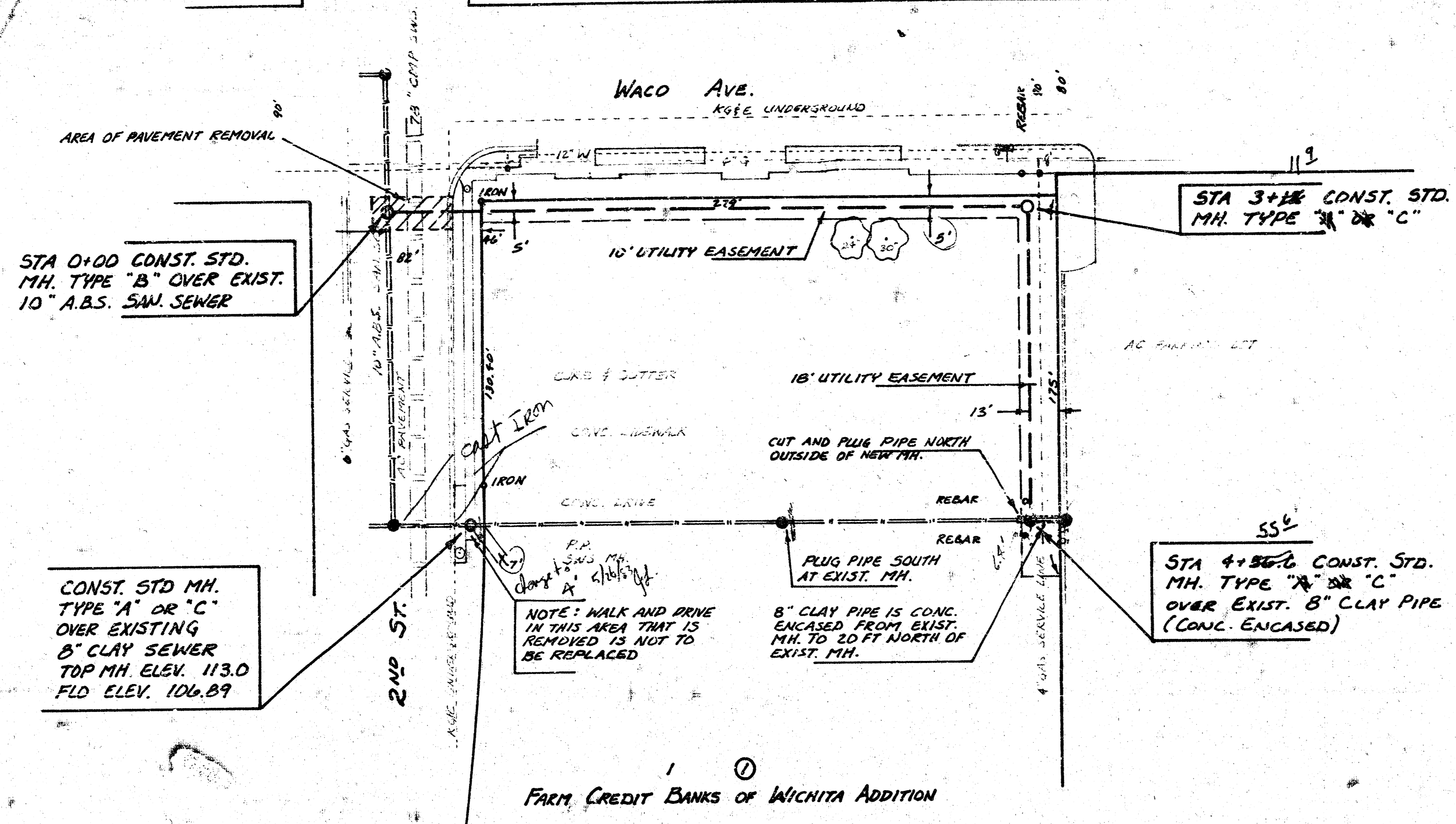


**CAUTION
UNDERGROUND
UTILITIES**
Please check with K G & E or
Southwestern Bell
Telephone Co. for Location

SCALE PLAN 1" = 40'
PROFILE 1" = 40' HORIZ.
1" = 5' VERT.

THE CONTRACTOR SHALL BE RESPONSIBLE FOR PRESERVING PROPERTY IRONS. THE CONTRACTOR SHALL BE REQUIRED TO RE-ESTABLISH ANY PROPERTY IRONS WHICH ARE DAMAGED OR DESTROYED BY HIS CONSTRUCTION OPERATIONS. SUCH IRONS SHALL BE RE-ESTABLISHED BY A LICENSED LAND SURVEYOR OR A LICENSED PROFESSIONAL ENGINEER IN ACCORDANCE WITH STATE LAWS.

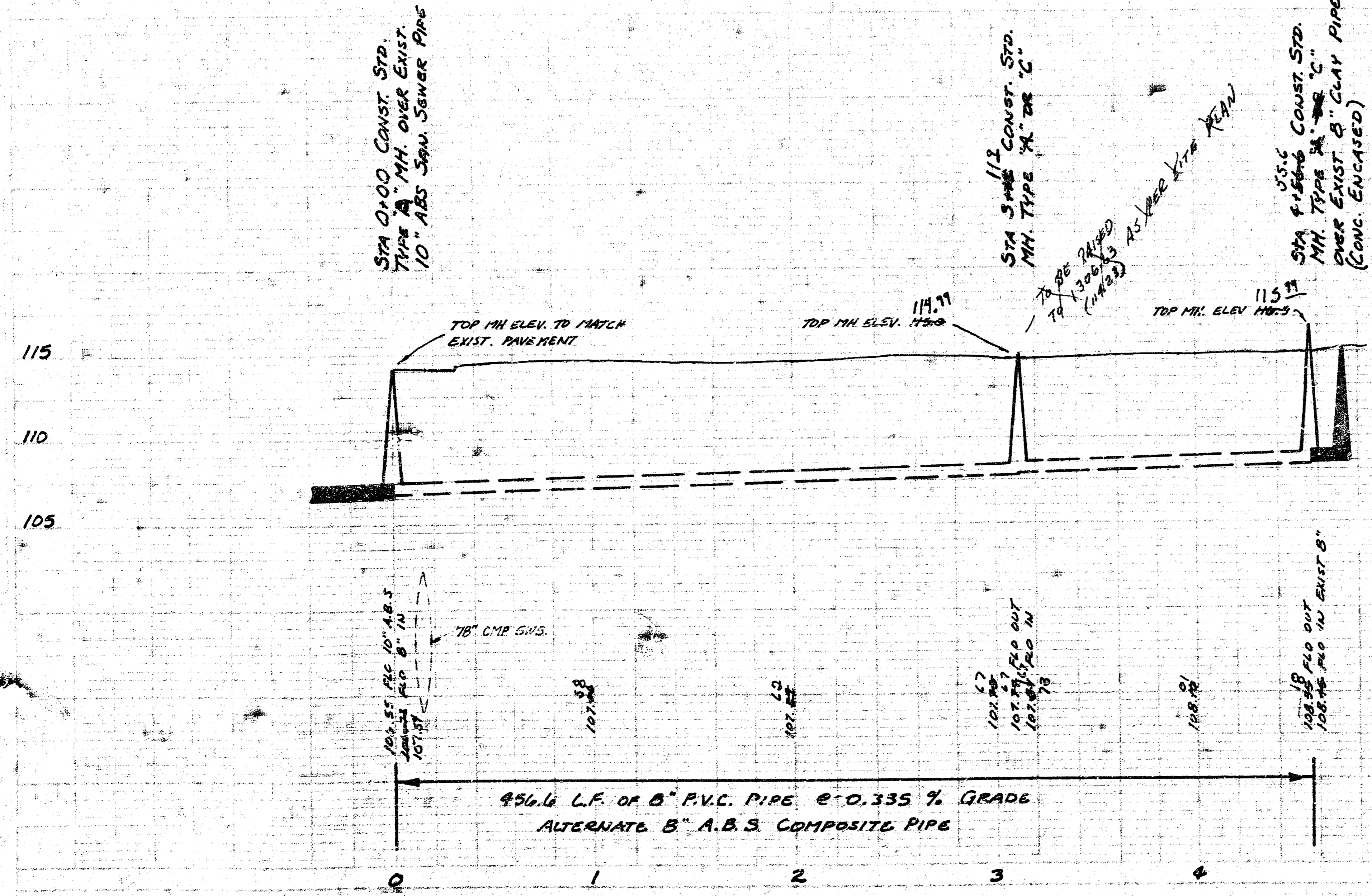


*As Built
JLL
12-83*

B.M. 111.75 R.R. SPIKE S. FACE P.P. AT NW CORNER OF WACO AND THIRD ST.
B.M. 116.89 'X' CUT ON WEST SIDE OF TRAFFIC SIGNAL BASE AT NW CORNER WACO AND SECOND ST.



*1306.63
1187.4
119.23*



*116.5
1187.4 - RIM
1303.9*

*10835
1187.4 - FLO
1296.75 - OUT*

PROJECT DESCRIPTION LATERAL RELOCATION IN DISTRICT Y, S. S. NO. 28 ON WACO SOUTH OF 2nd ST. IN COMM. WITH FARM CREDIT BANKS OF WICHITA ADDITION		
PROJECT NUMBER 824-30-620-50131-430-000-000		
BOOK NO. 700-2	APPROVED BY	DATE 1/83
DRAWN BY LOONIS	REVISIONS	1/1
CITY OF WICHITA DEPARTMENT OF ENGINEERING		SCALE
DIRECTOR OF ENCL. CITY ENGINEER R. W. BRUGGEMAN		

14 3 4 12