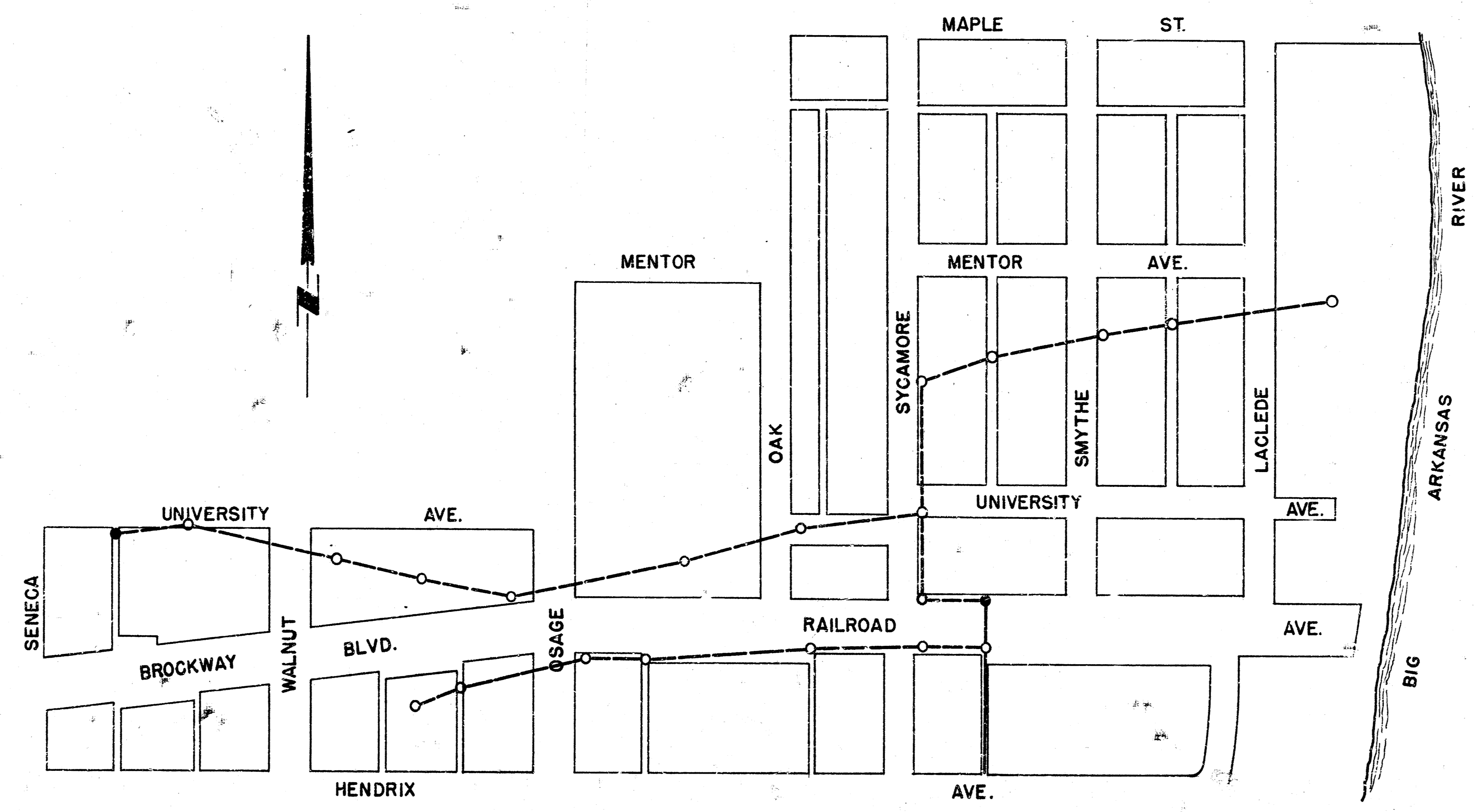


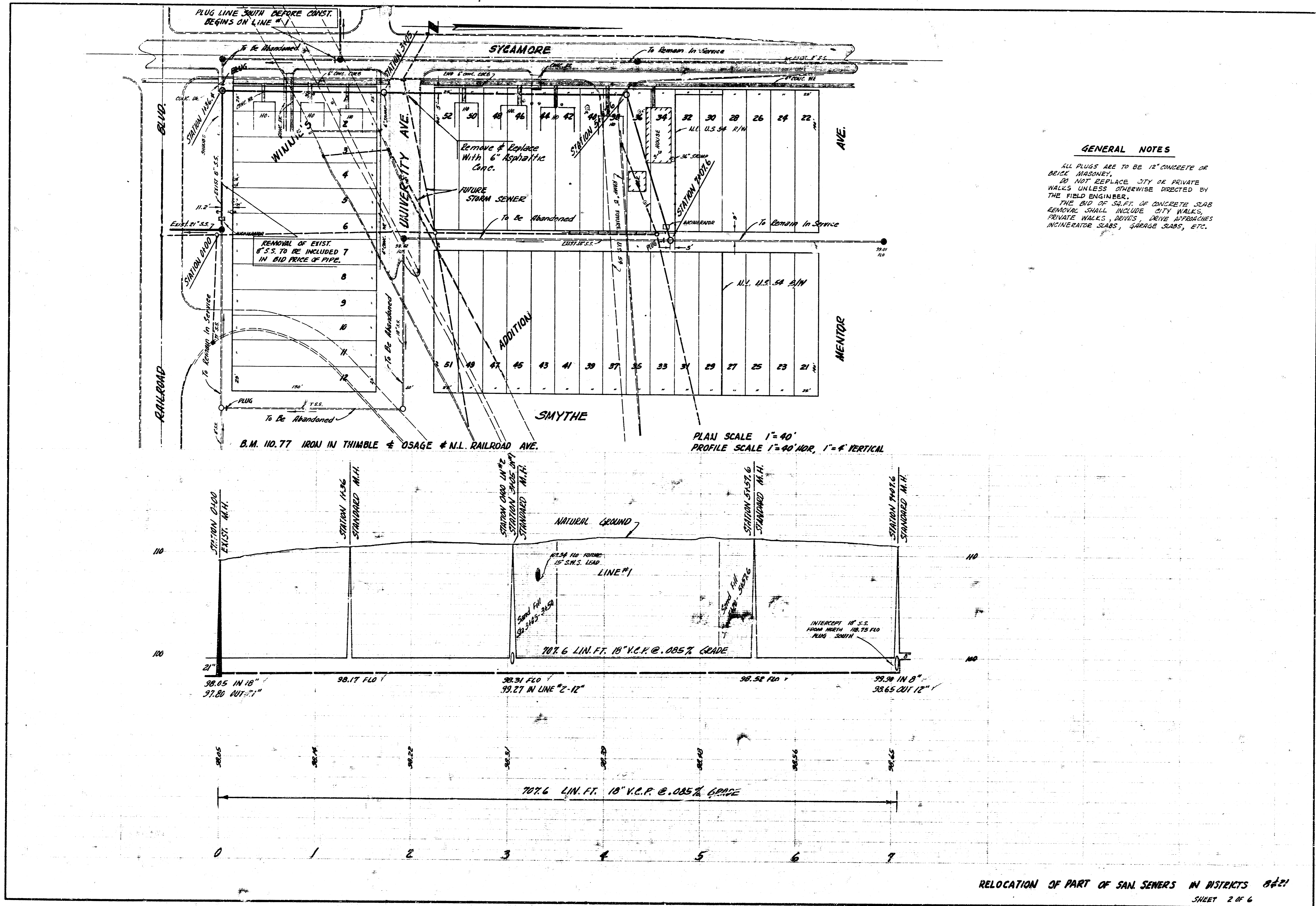
LOCATION MAP  
 RELOCATION OF PART OF SAN. SEWERS IN DISTRICTS 8 & 21  
 IN CONNECTION WITH THE CONSTRUCTION OF U.S. 54 TRAFFIC  
 ENTERCHANGES AT SENECA & SYCAMORE STREETS

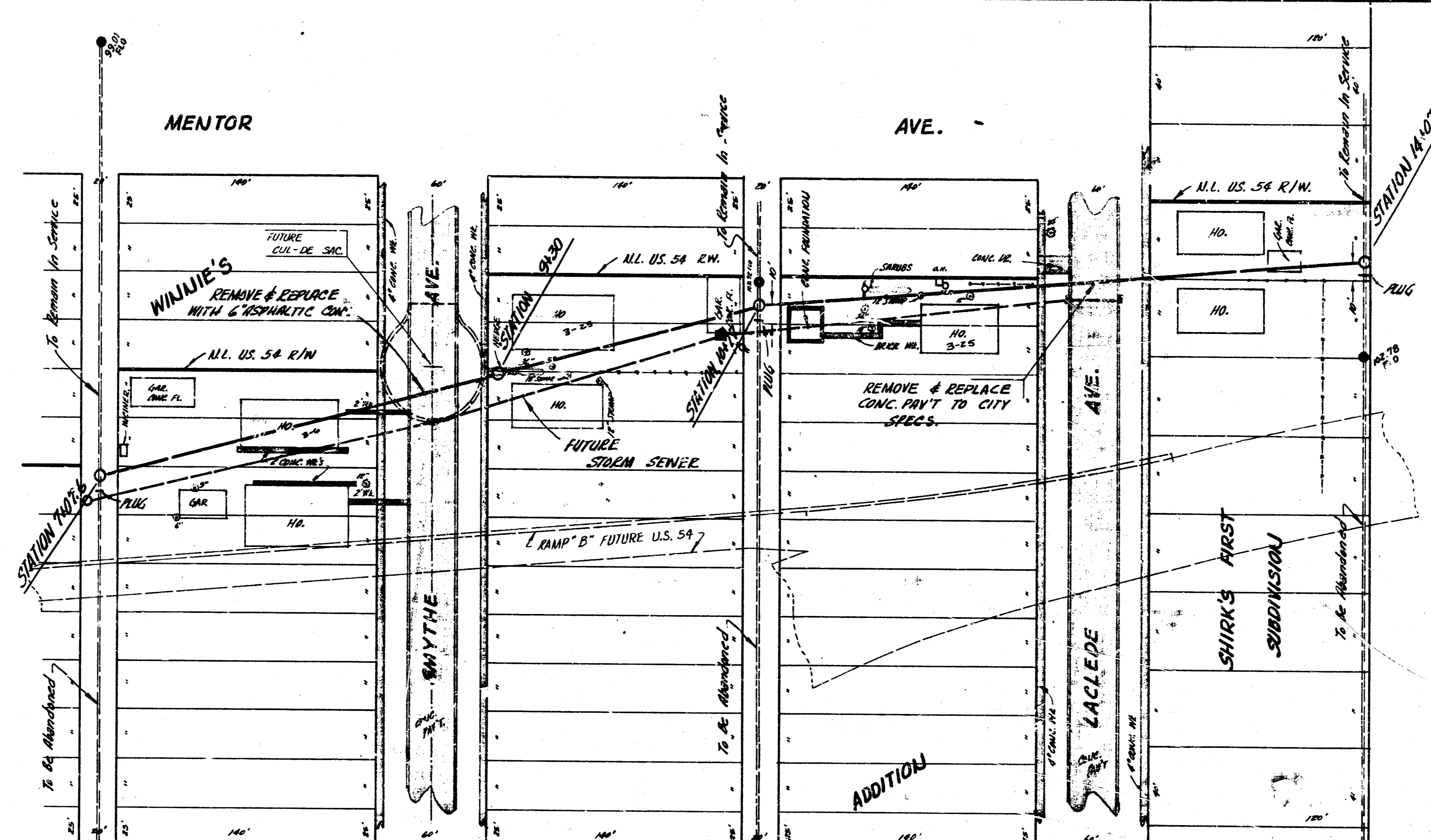
B.E. SMITH CITY ENGINEER

SURVEY BY - BRUNGER BOOKS K. ST. K. C.  
 ORIGINAL BY - BRUNGER BOOKS K. ST. K. C.  
 CHECKED BY - BRUNGER BOOKS K. ST. K. C.  
 DATE

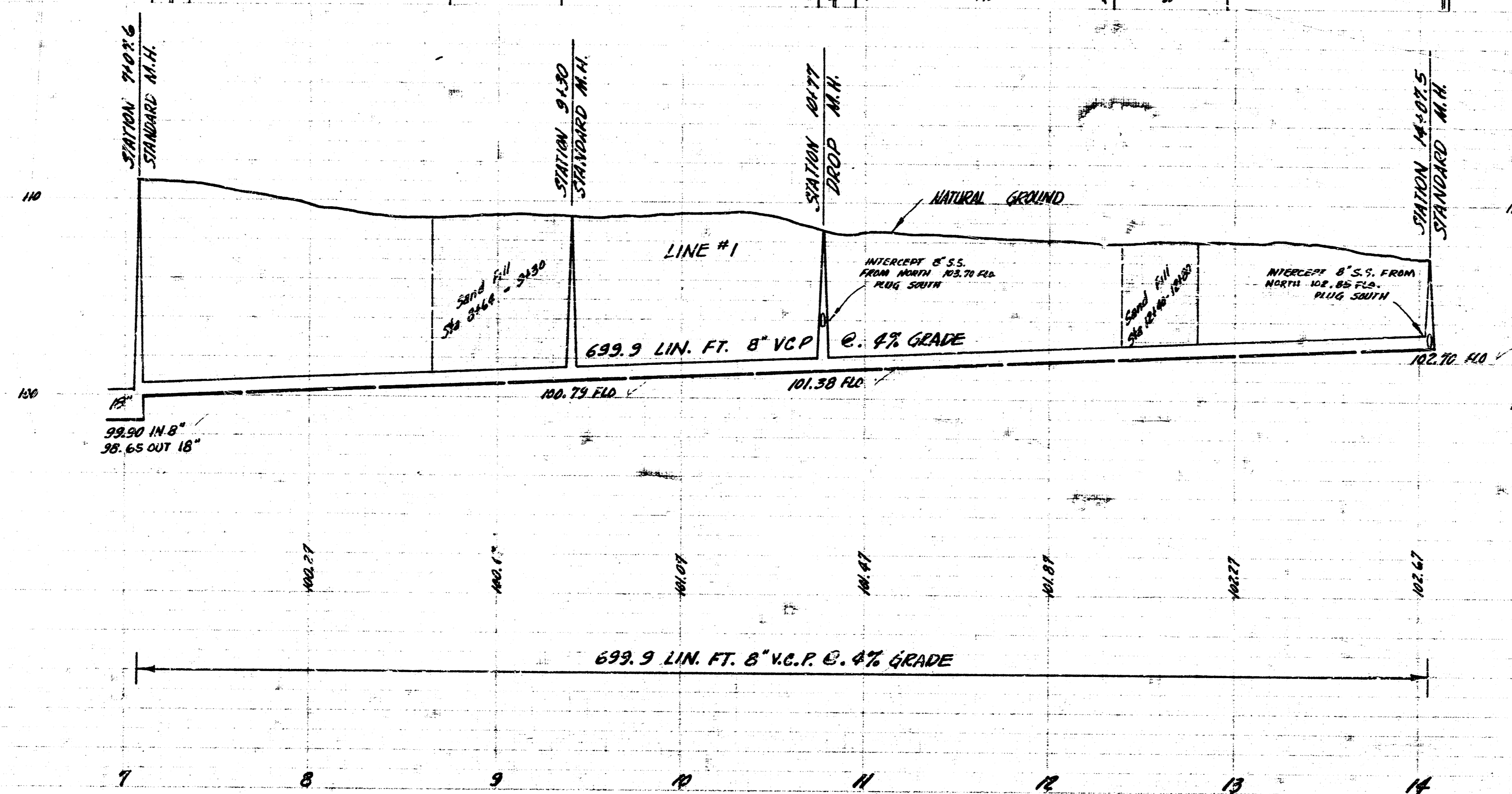


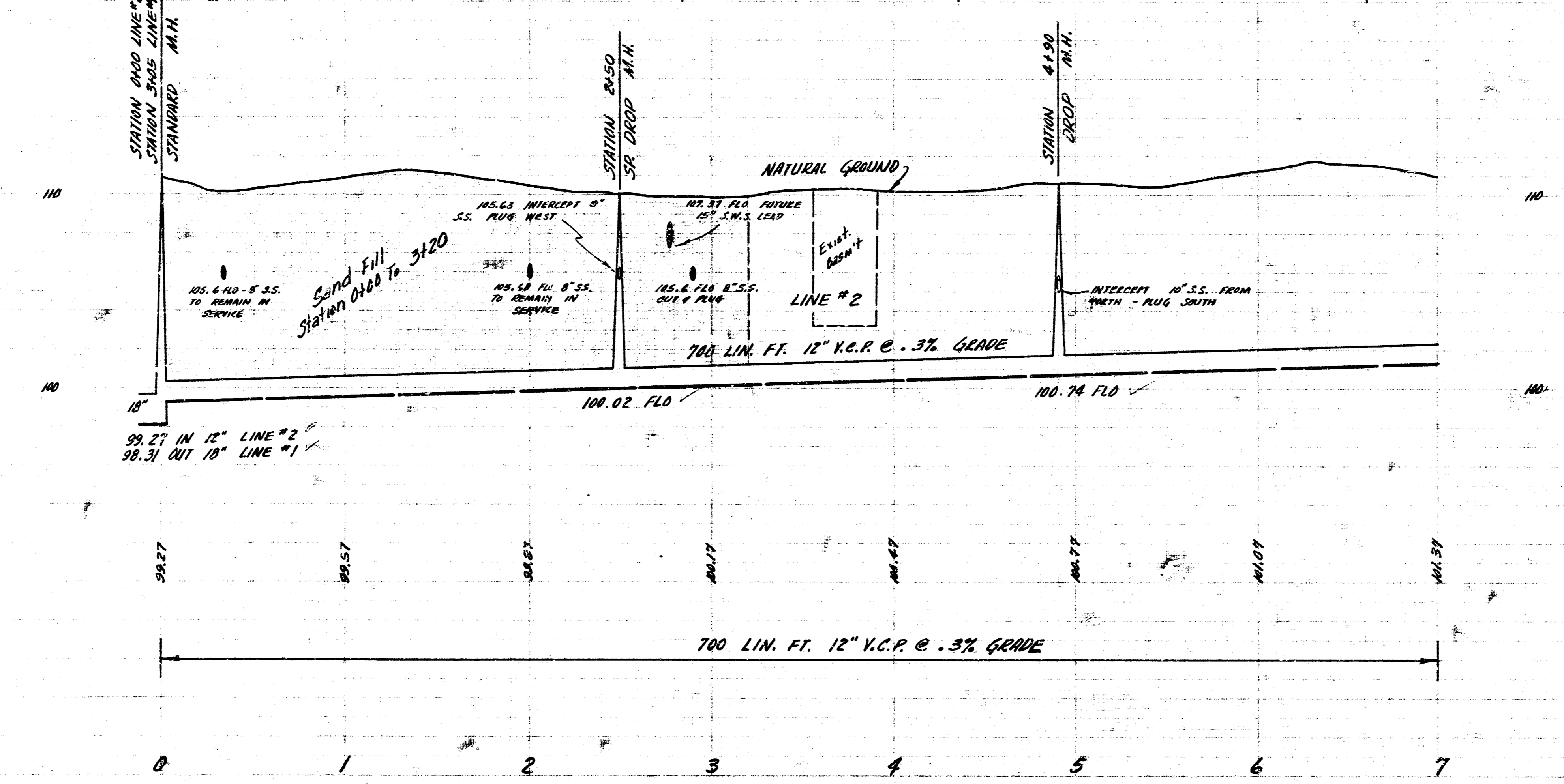
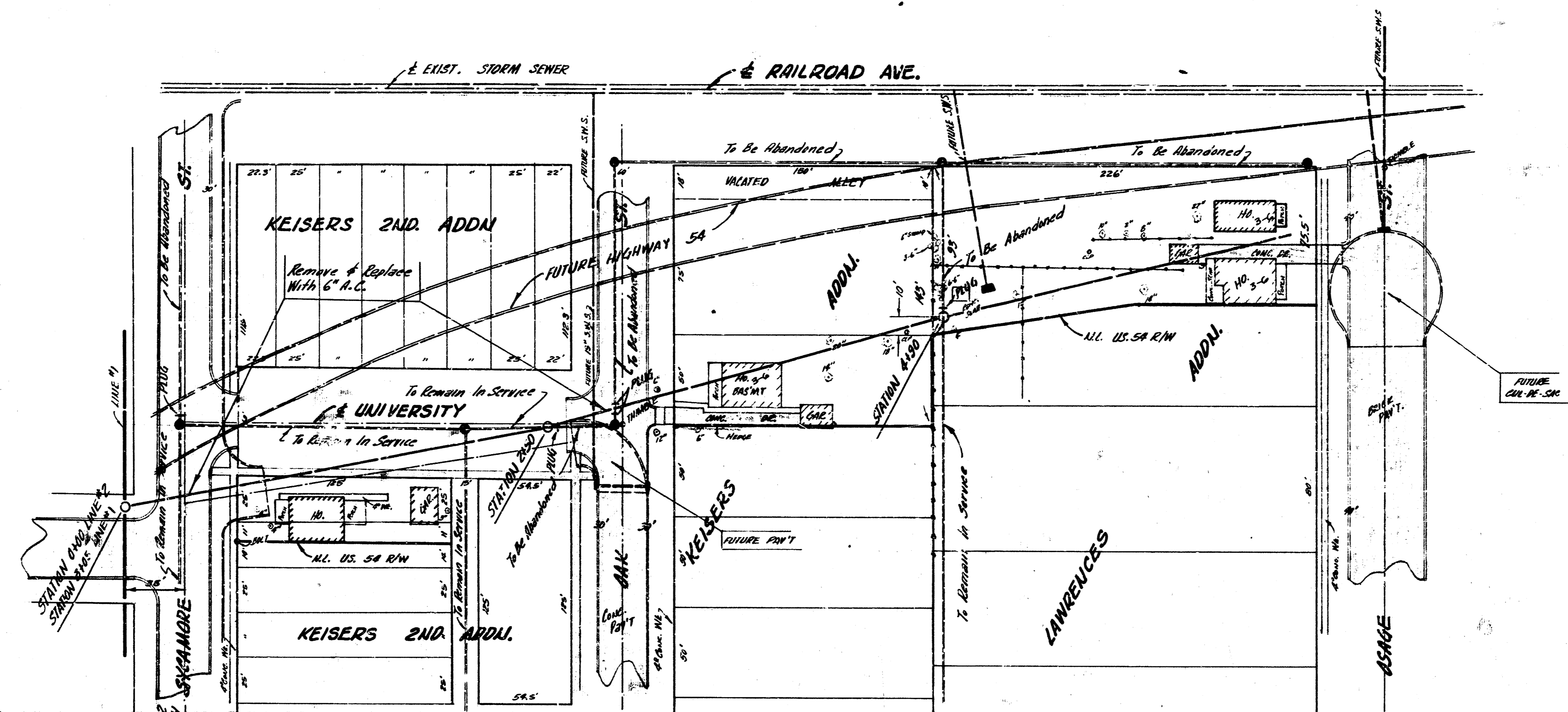
RELOCATION OF PART OF SAN. SEWERS IN DISTRICTS 8 & 21.  
 MARCH 1957 SHEET 1 OF 6



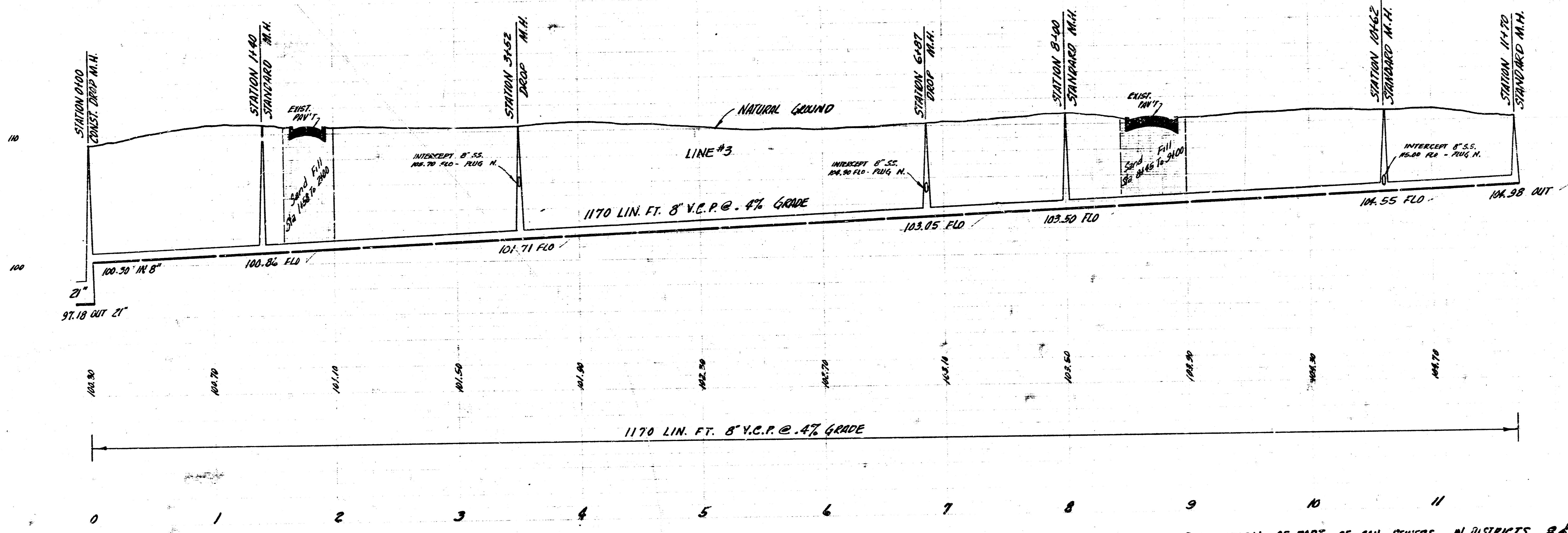
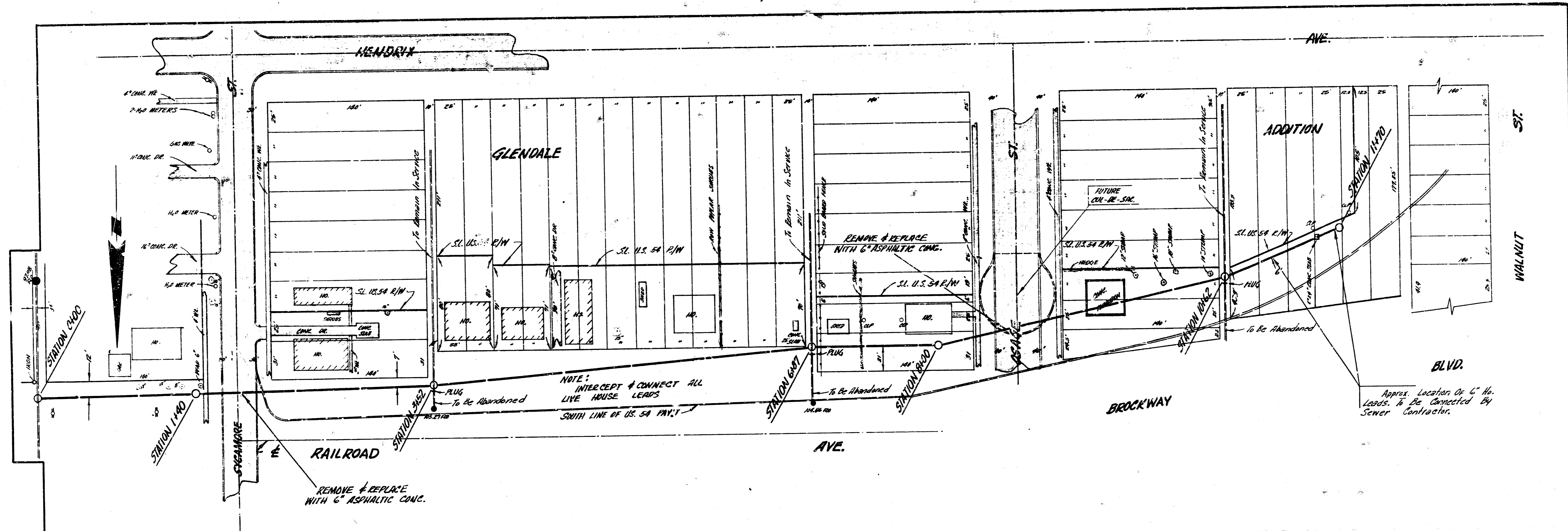


PLAN SCALE 1" = 40'  
 PROFILE SCALE 1" = 40' HOR, 1" = 4' VERTICAL

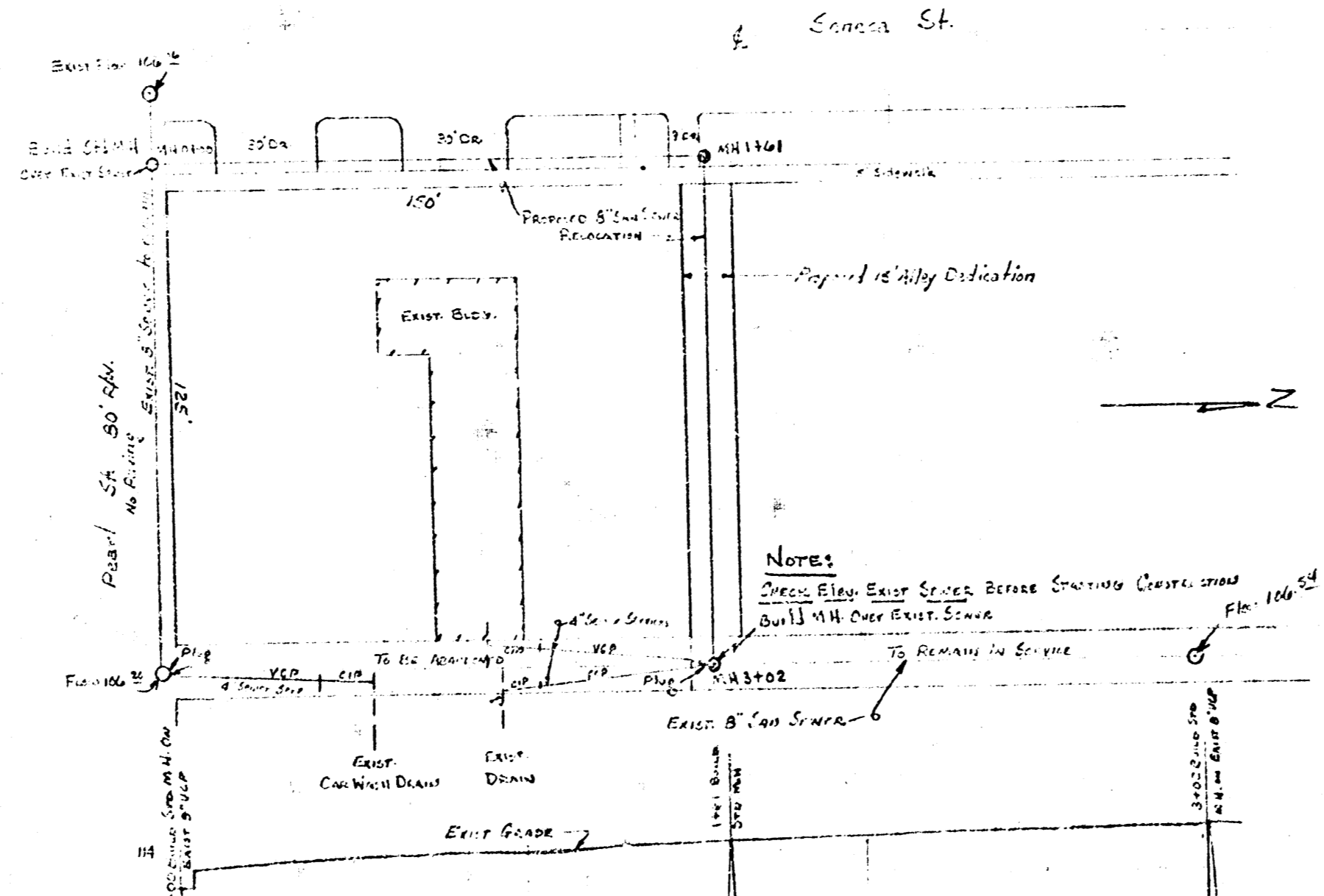








RELOCATION OF PART OF SAN. SEWERS IN DISTRICTS 8 & 21  
SHEET 6 OF 6



CITY OF WICHITA  
 APPROVAL does not release the contractor from any responsibility for errors or omissions from the contract requirements or for any deficiencies of equipment, work, or materials.  
 Date: 3/27/22  
 [Signature]

NOTE TO CONTRACTOR  
 This project will be constructed in accordance with the SPECIFICATIONS of the CITY OF WICHITA. The CONTRACTOR will reimburse the City of Wichita for all cost of Engineering, Planning, and Construction.