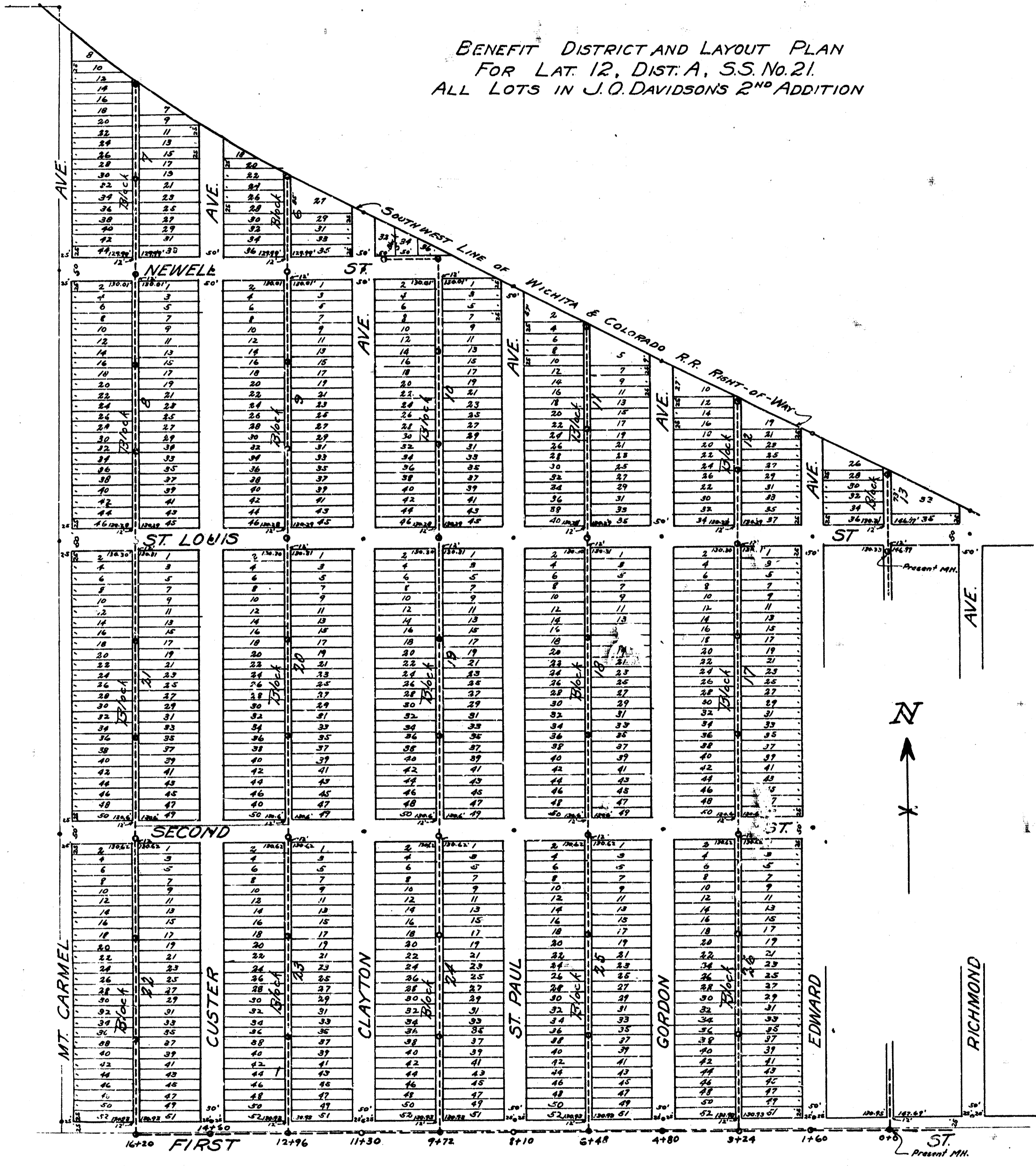
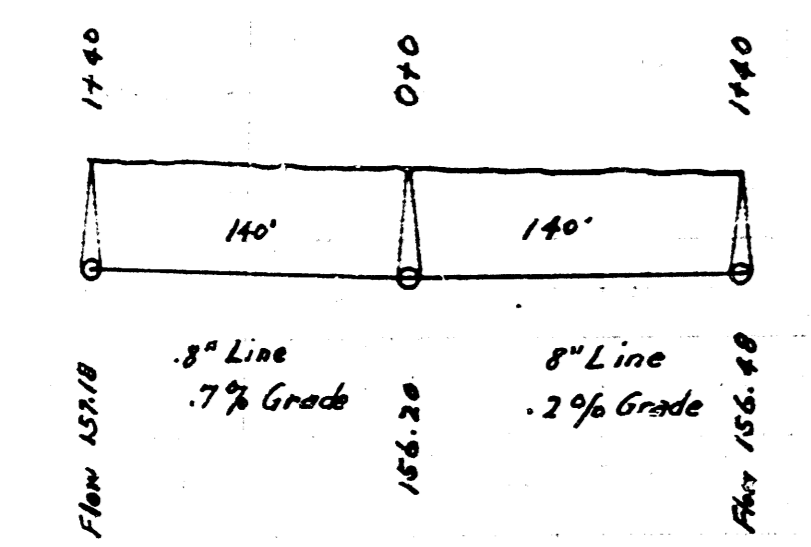
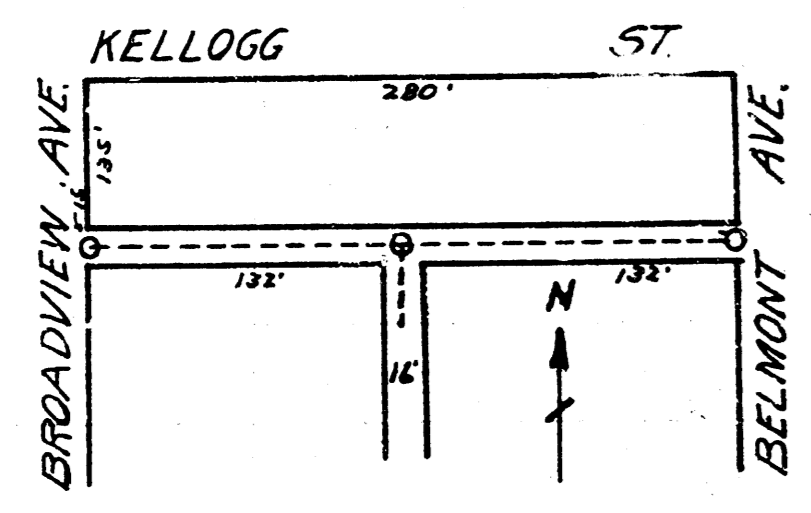
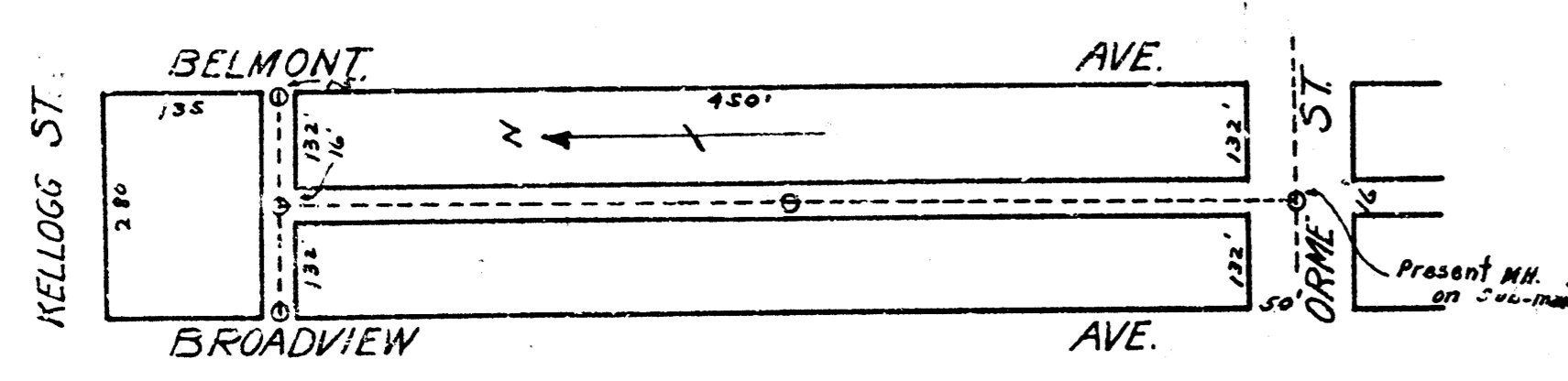


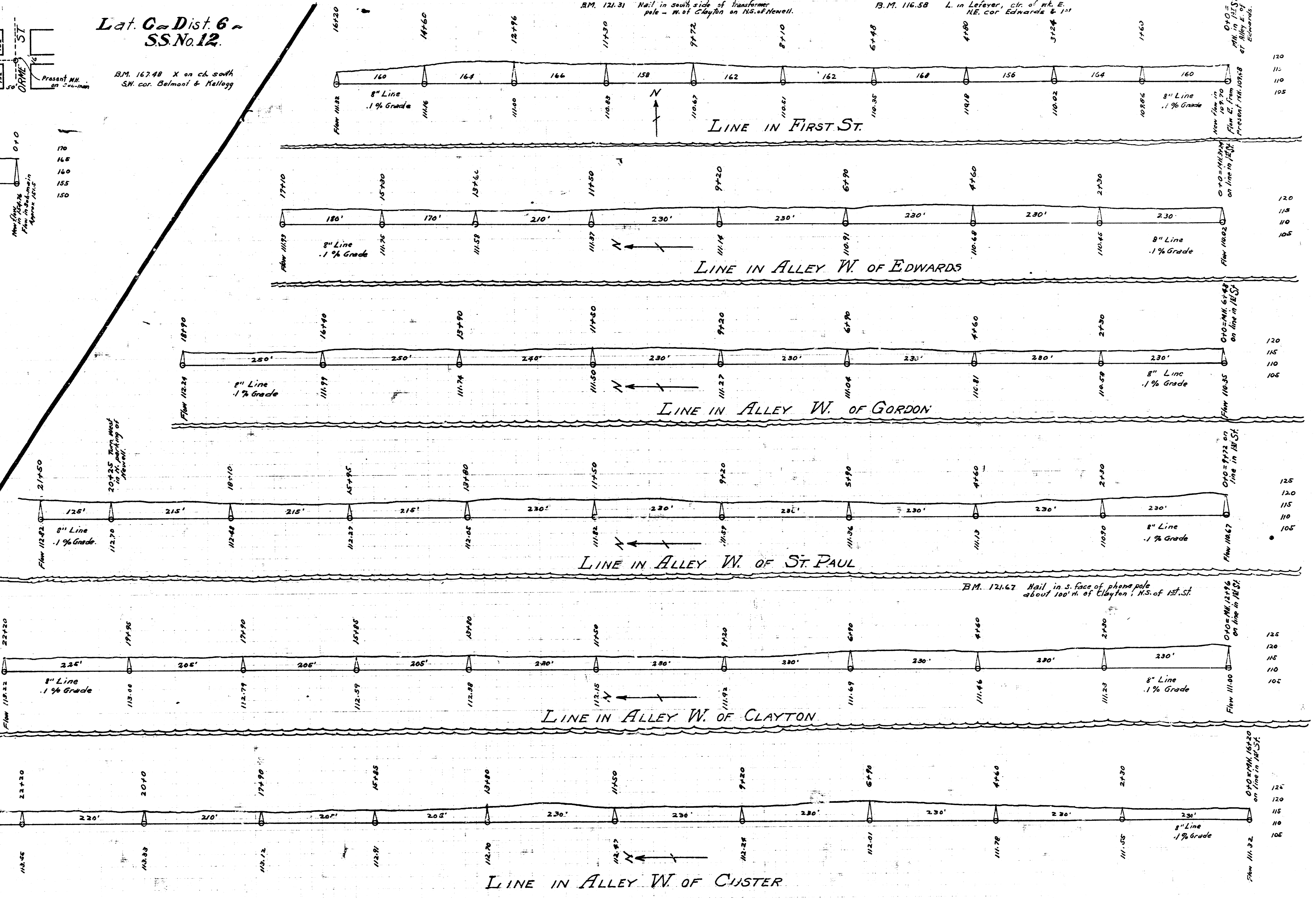
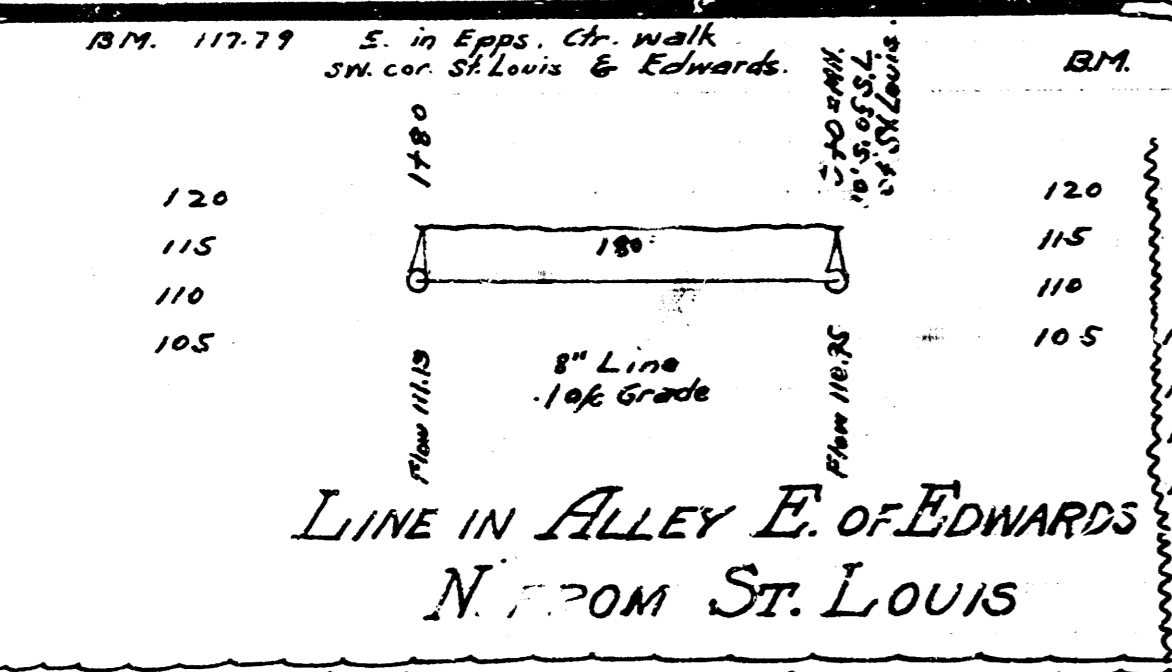
BENEFIT DISTRICT AND LAYOUT PLAN
FOR LAT. 12, DIST. A, S.S. No. 21.
ALL LOTS IN J.O. DAVIDSON'S 2ND ADDITION





Lat. C - Dist. 6 -
S.S. No. 12.

B.M. 167.48 X on ch. south
SW cor. Belmont & Kellogg



LAT. 12 - DIST. A - S.S. No. 21 See Beneficial District Plat for Layout