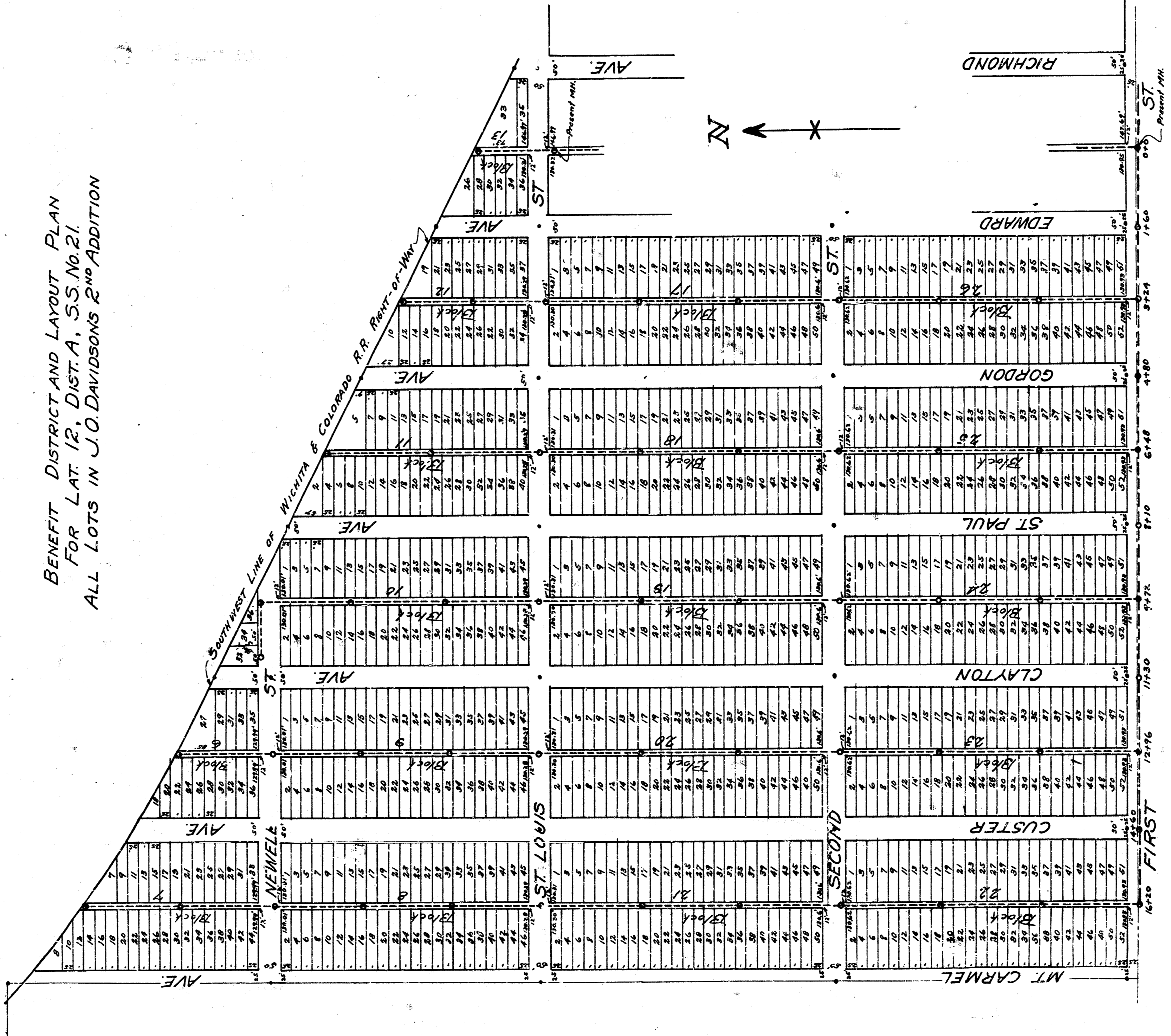
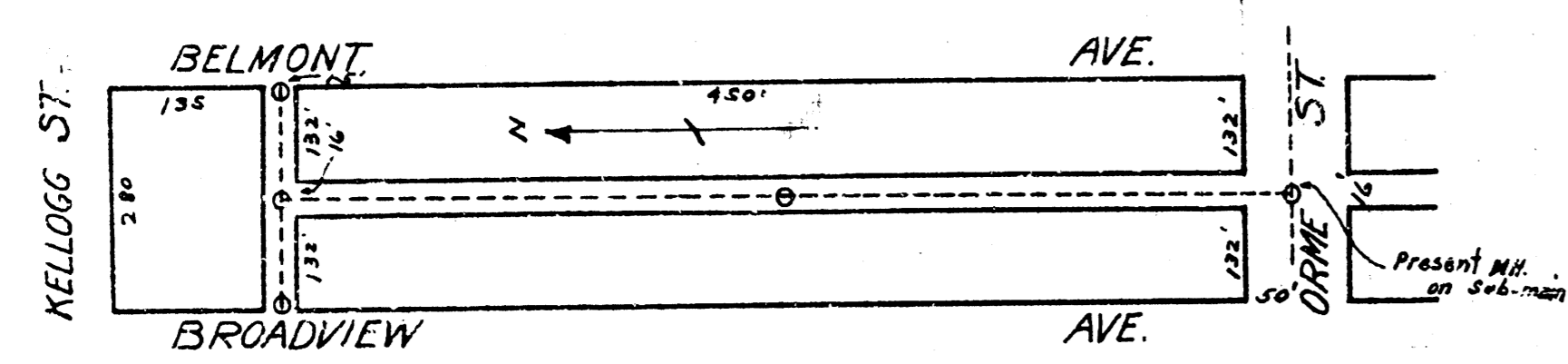


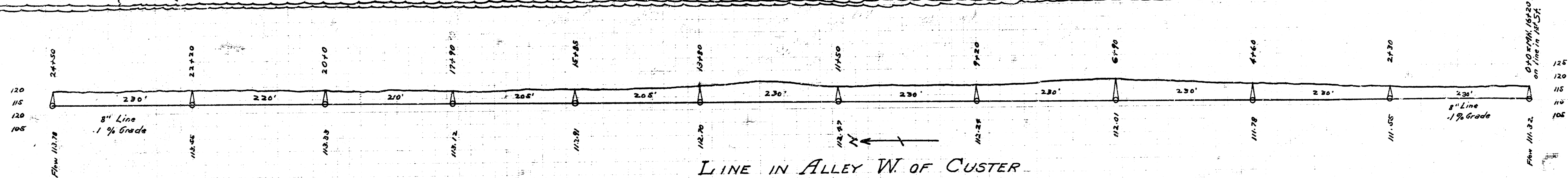
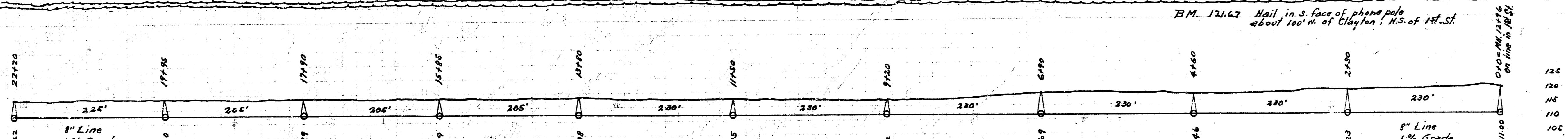
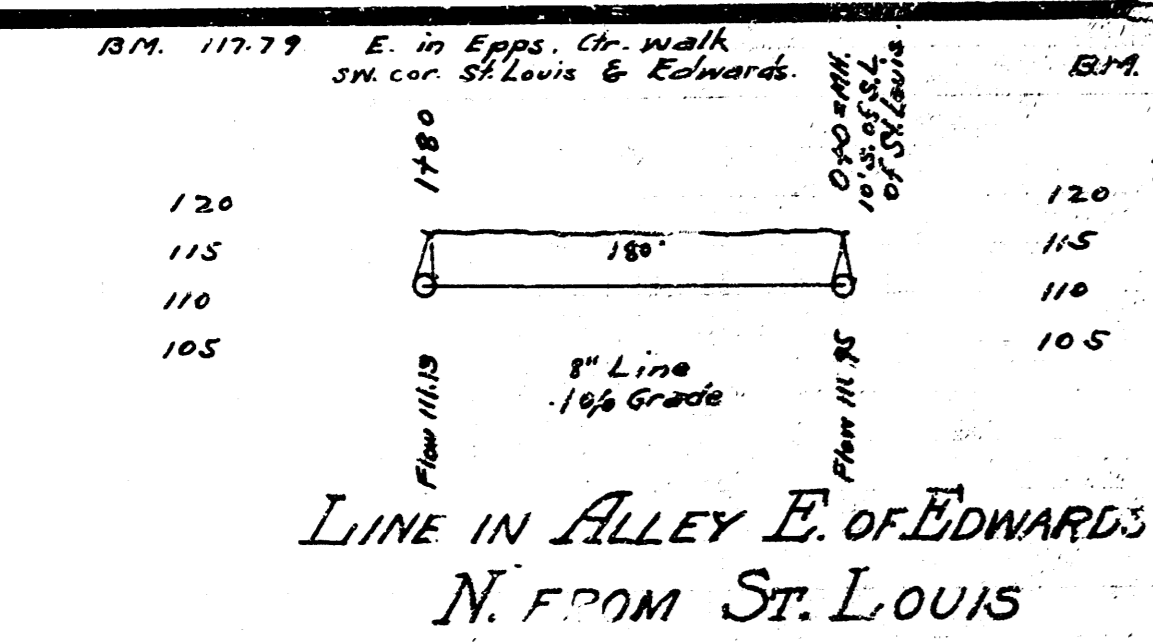
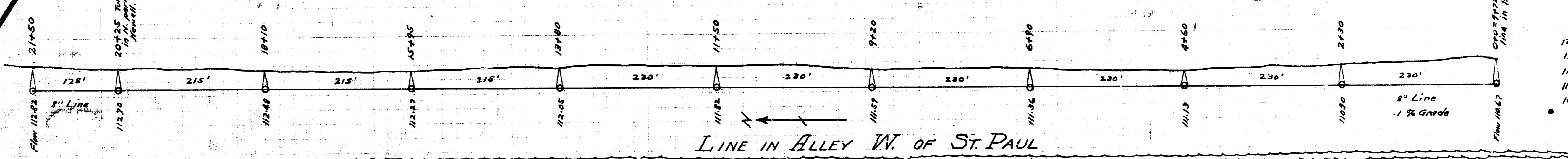
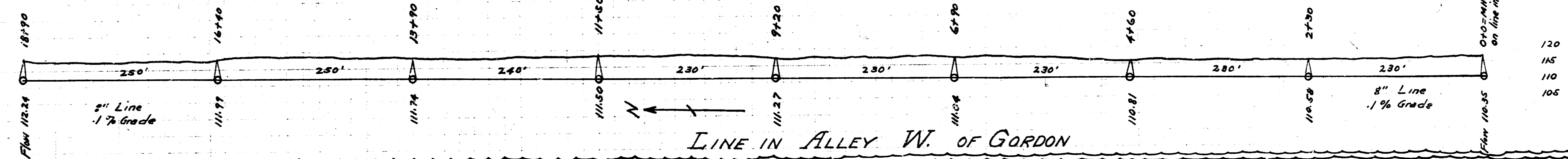
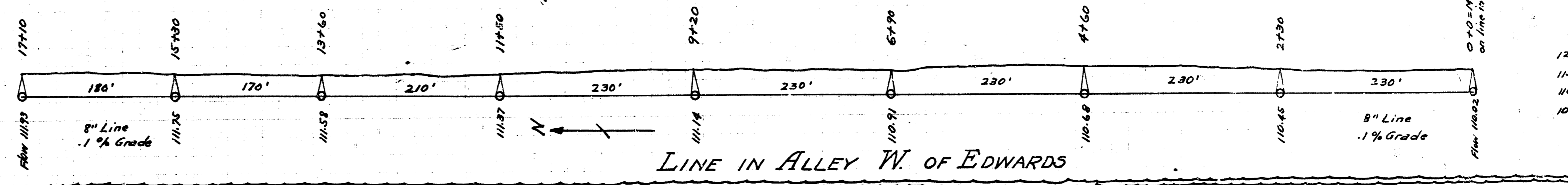
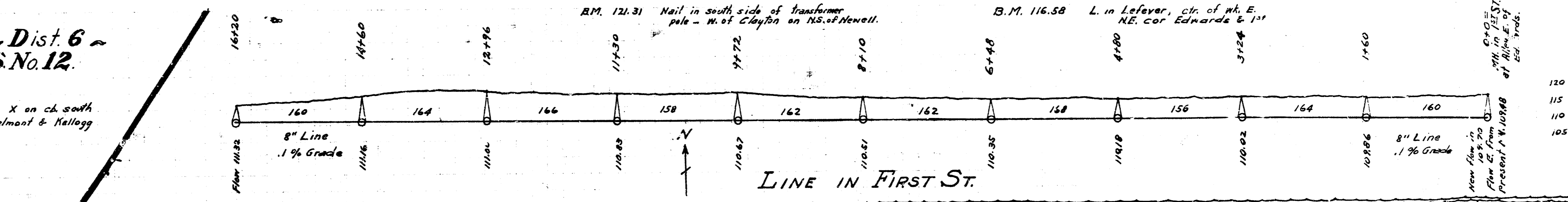
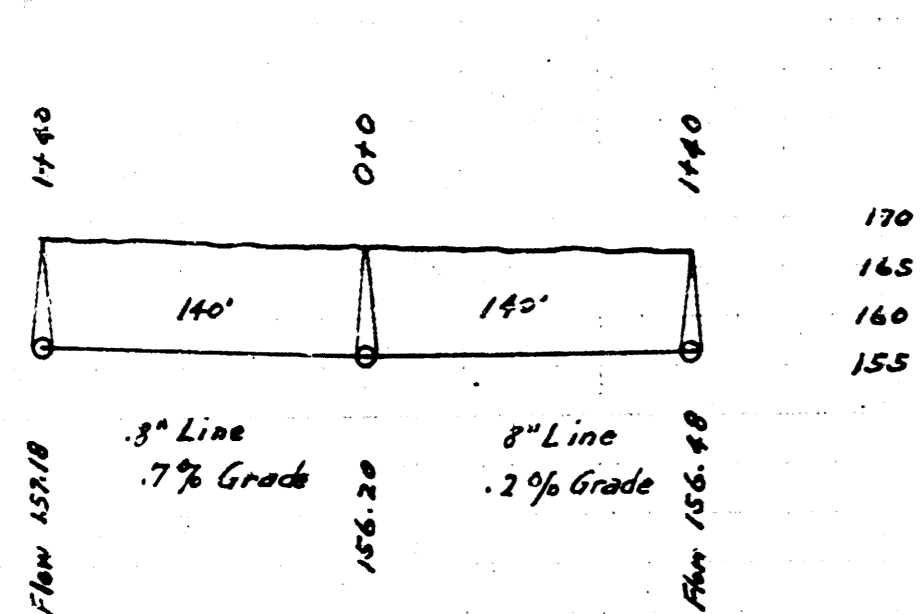
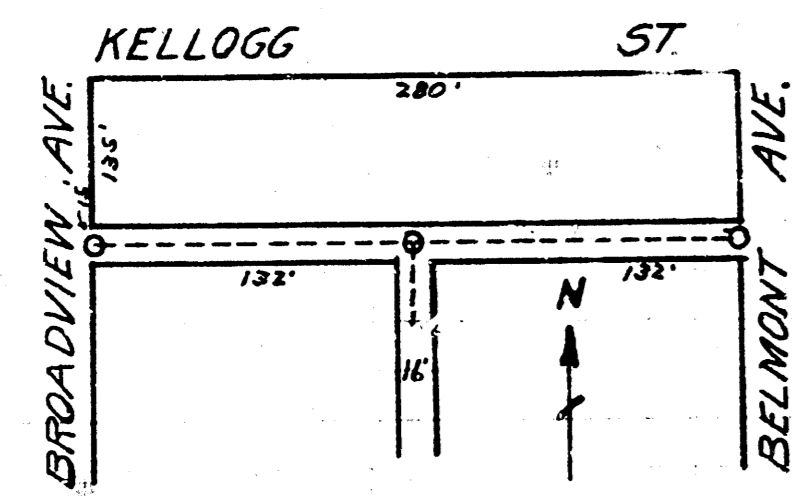
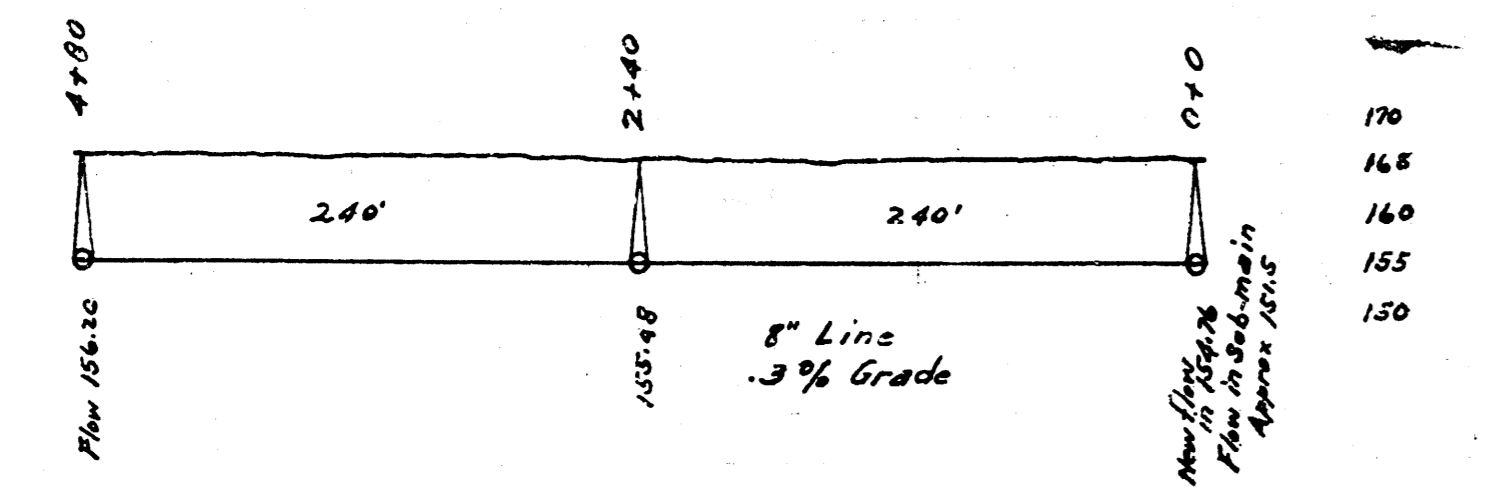
BENEFIT DISTRICT AND LAYOUT PLAN
FOR LAT. 12, DIST. A, S.S. No. 21.
ALL LOTS IN J.O. DAVIDSON'S 2ND ADDITION





Lat. Co. Dist 6 - S.S. No. 12

B.M. 1, 148 X on ch. south S.W. cor. Belmont & Kellogg



LAT. 12 - DIST. A - S.S. No. 21 See Beneficial District Plat for Layout

20130