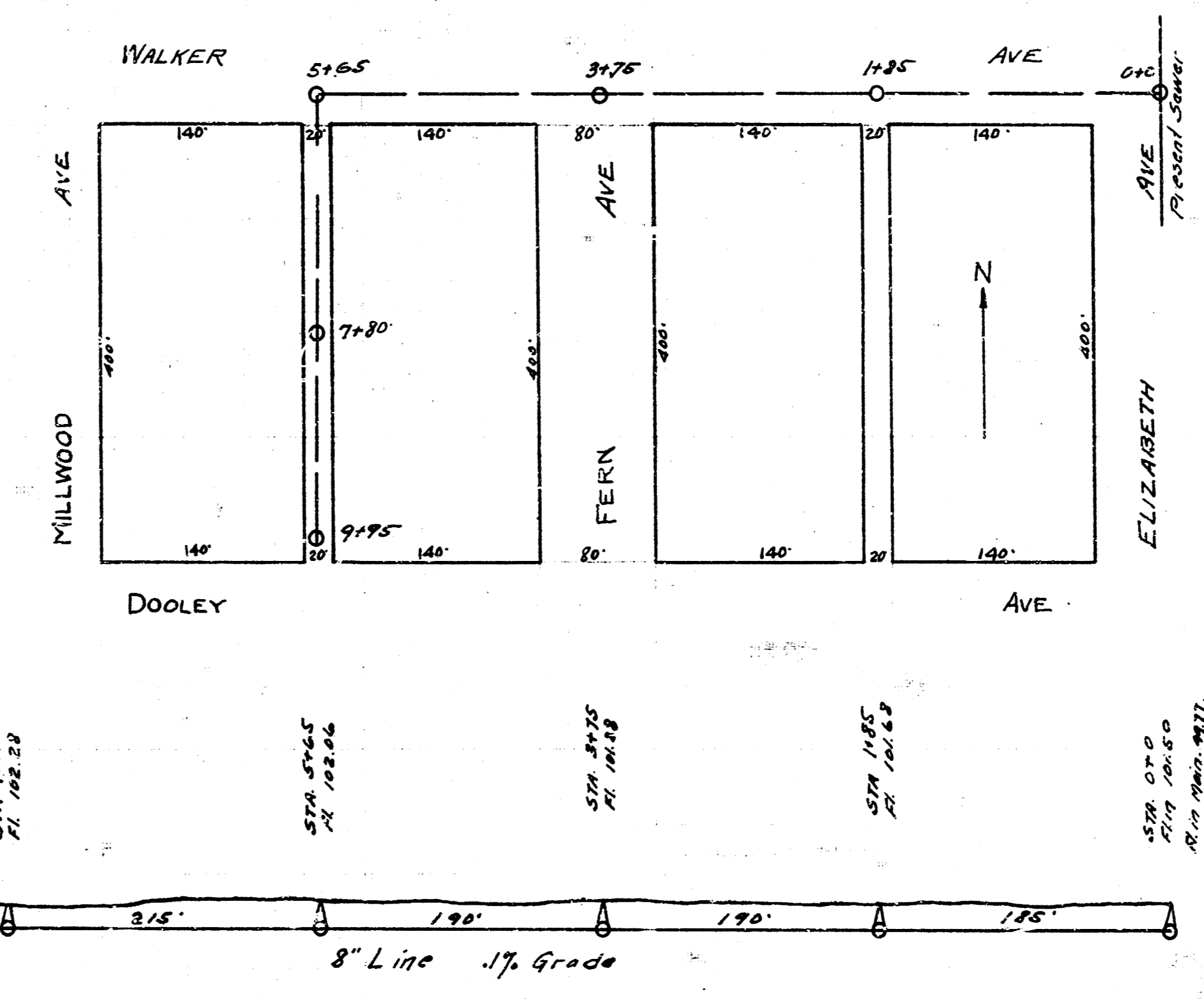


B.M. 14574. W in Whaley cr. of
W. So. S.E. Lorraine + 17th.

LAT. B, DIST. P, SS. 12.



M.H. north of Walker is 348 E. 166.
of W. Wk on Elizabeth + 109.3' N of
So. line of Walker east.
B.M. 10560 L in Long cr. of Wk
E. S.E. Elizabeth + Walker.

LAT. 17, DIST. A, S.S. NO. 21