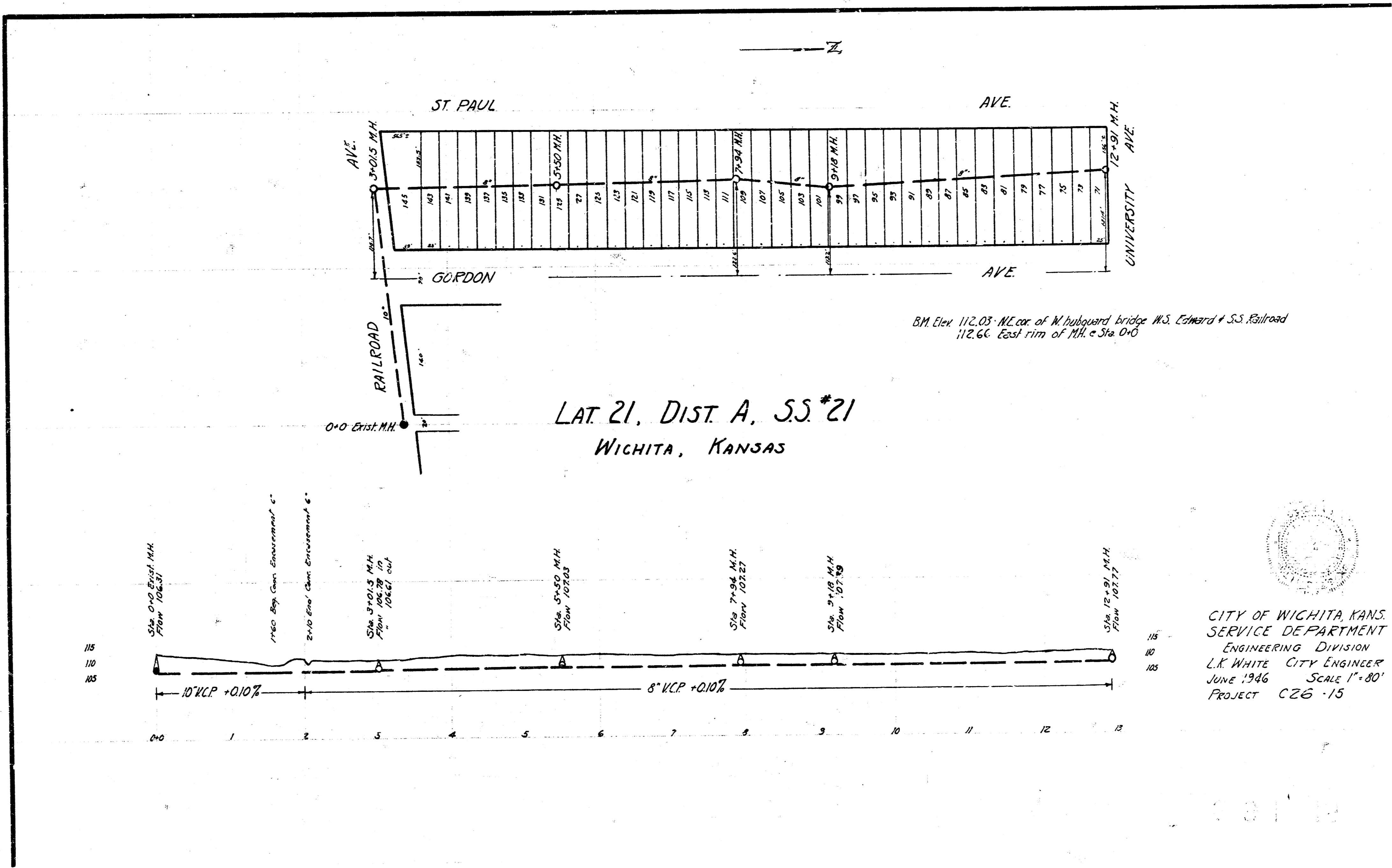
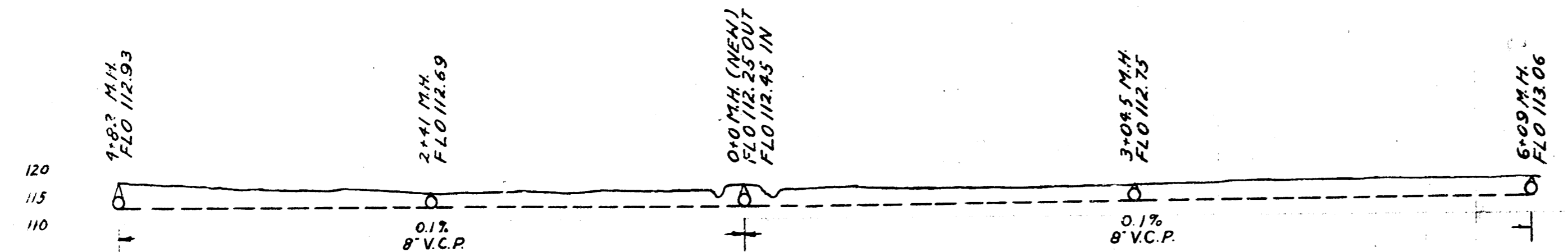
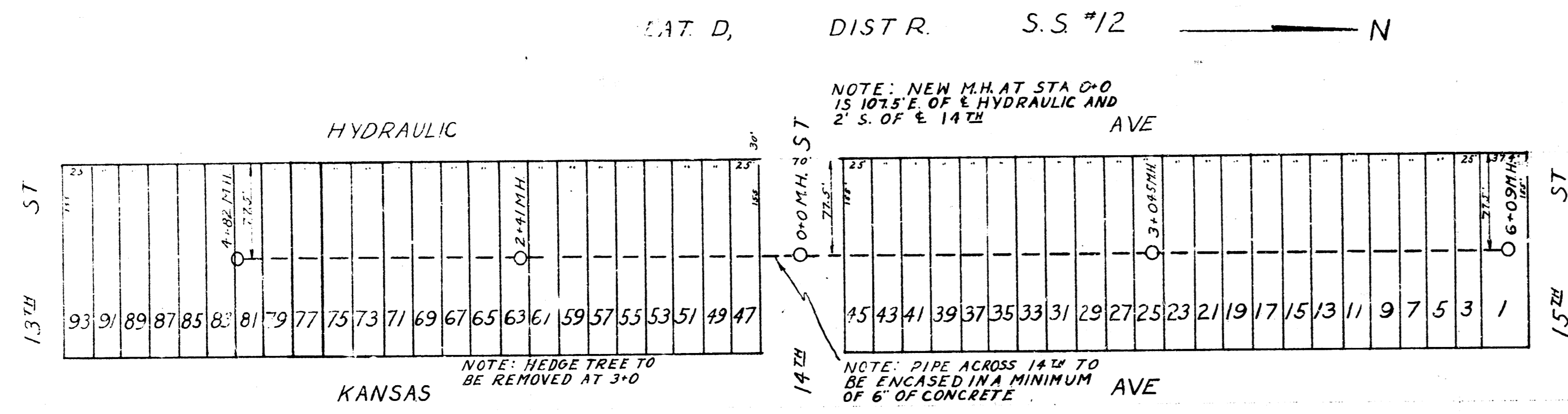


B.M. 11598 STANDARD S.E. COR HYDRAULIC +13.24
 B.M. 11200 20 P. SPIKE IN BELM 110' E. & HYDRAULIC, S.S. 15 1/2



CITY OF WICHITA, KANS.
 SERVICE DEPARTMENT
 ENGINEERING DIVISION
 L.K. WHITE, CITY ENGINEER
 JUNE 1946 SCALE 1"=80'
 PROJECT C26-15