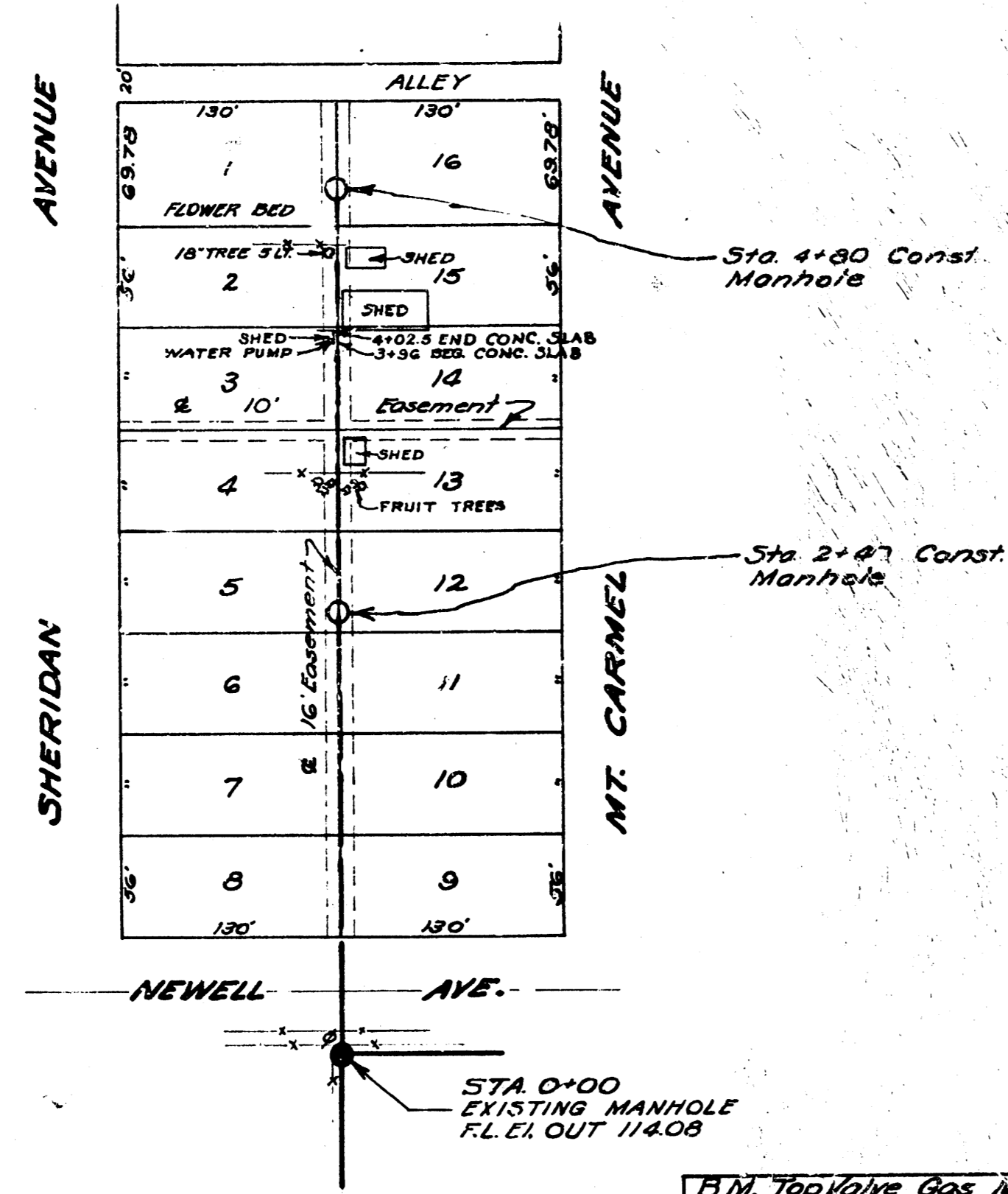


CENTRAL AVE.

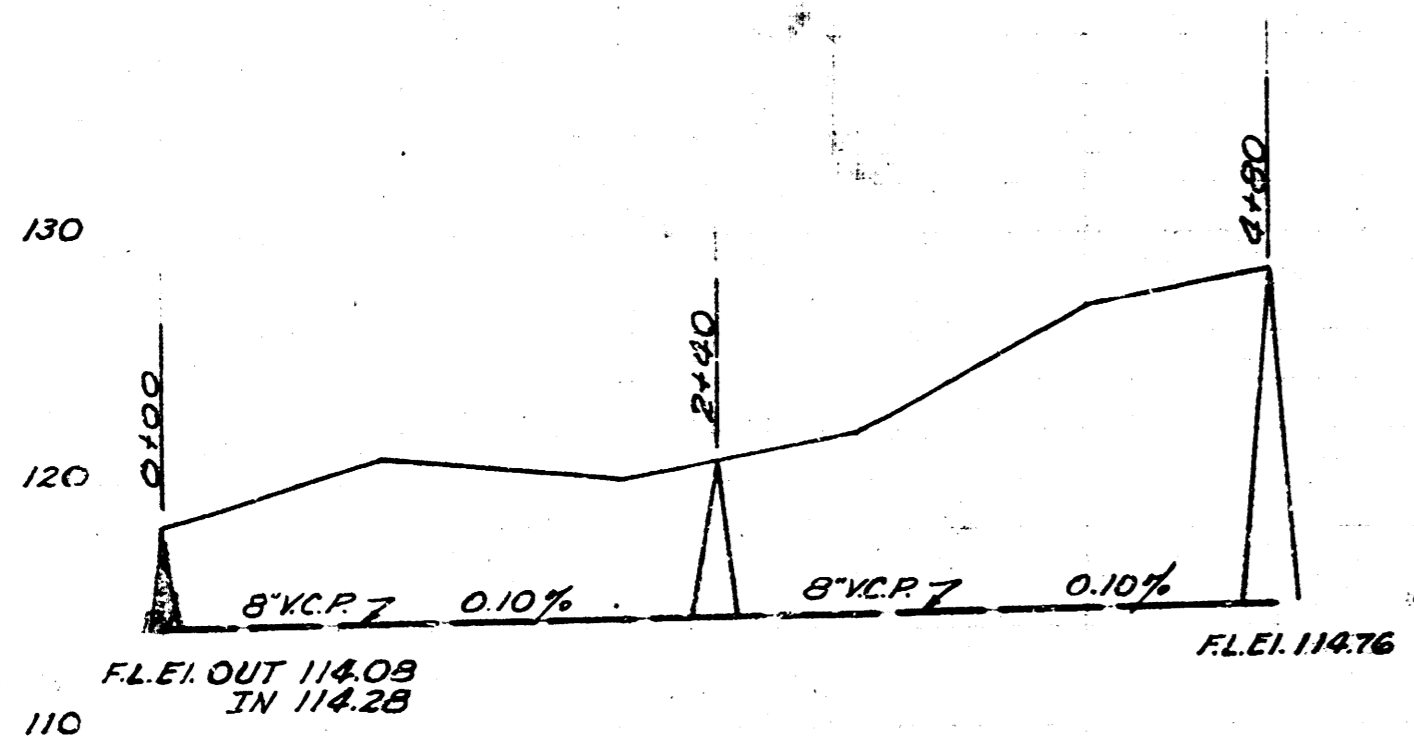


SAND BACKFILL TRENCH STA. 0+15 TO STA. 0+49

B.M. E. Rim Manhole Sta. 0+00 El. 116.15

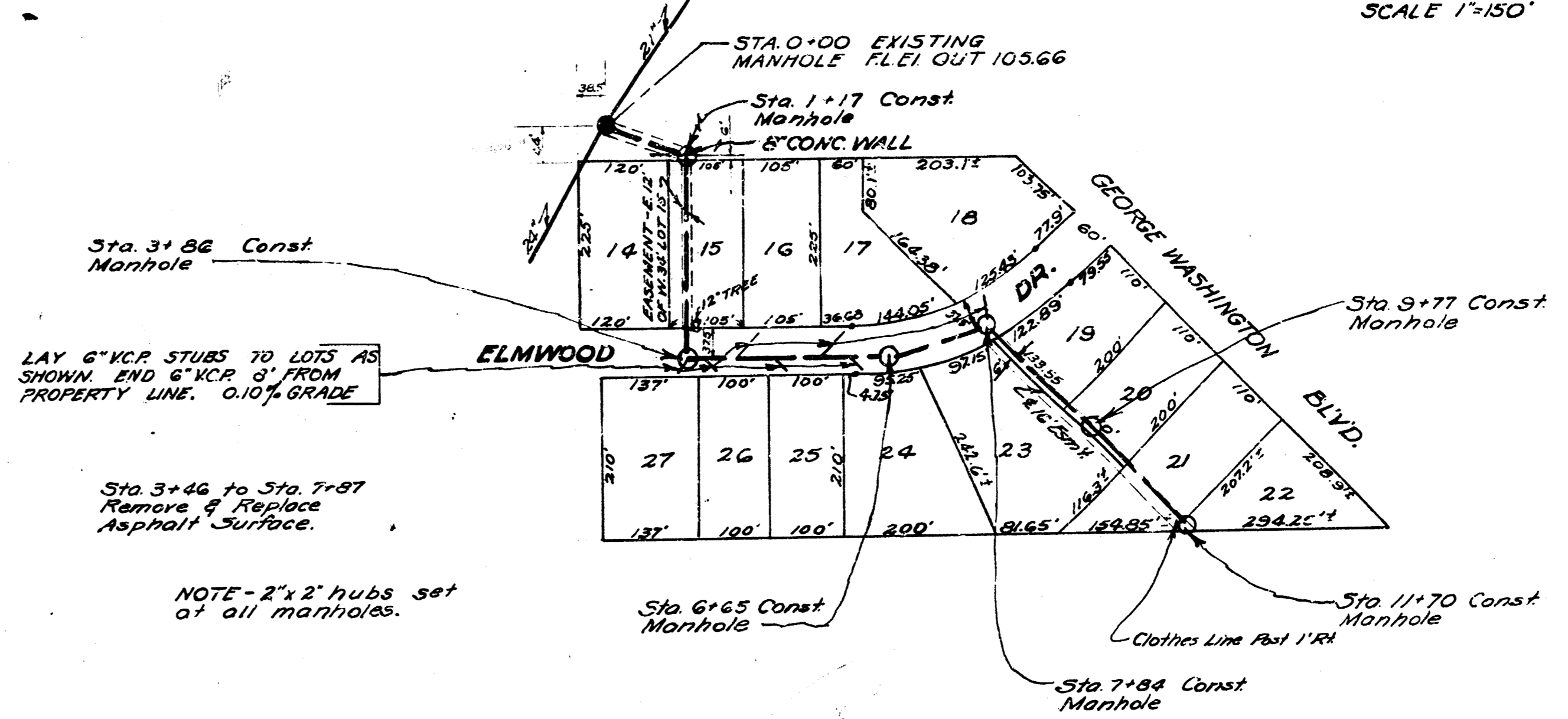
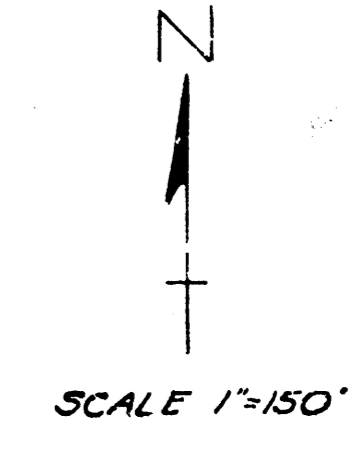
B.M. Top Valve Gas Meter No. #556 Sheridan El. 120.33

SCALE 1"=80' Horiz. 1"=8' Vert.



Date: 10/16/51  
Drawn by: J.L.A.  
Checked by:  
Note Book No. H 1

LAT. 28 DIST. MAIN 21  
CITY OF WICHITA KANSAS  
L.K. WHITE CITY ENGINEER  
Proj. No. C21-22



STA. 3+46 Const Manhole  
Lay 6" V.C.P. STUBS TO LOTS AS SHOWN END 6" V.C.P. 3' FROM PROPERTY LINE. 0.10% GRADE

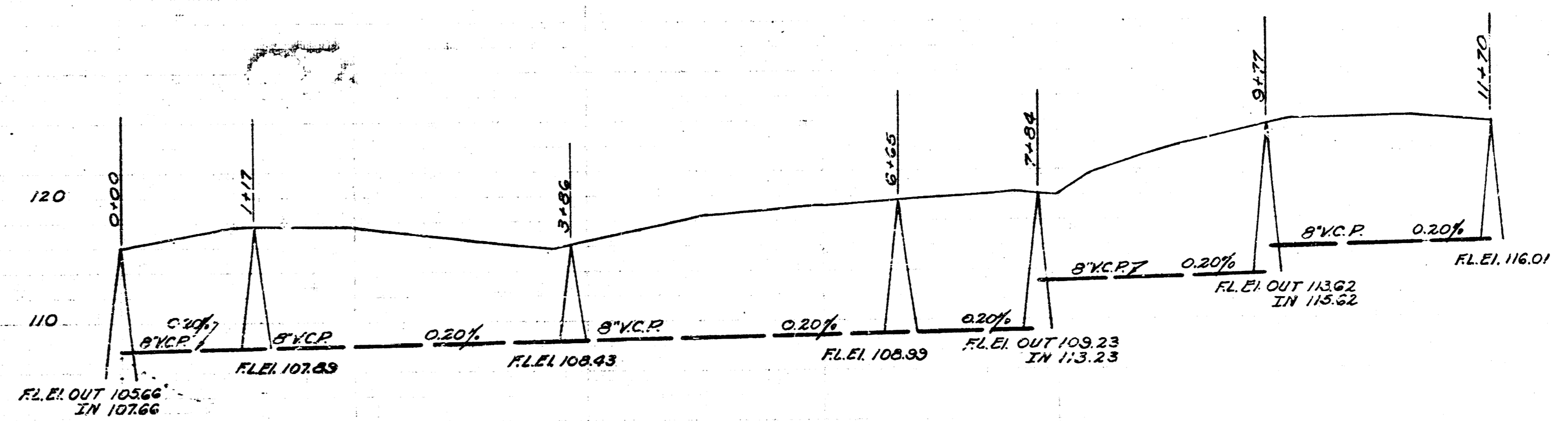
Sta. 3+46 to Sta. 7+87 Remove & Replace Asphalt Surface.  
NOTE - 2" x 2" hubs set at all manholes.

SAND BACKFILL TRENCH STA. 3+41 TO STA. 7+93

B.M. S. Rim Manhole Sta. 0+00 El. 115.36

B.M. NW Cor. Conc. Drive 60' Const. Sta. 1+460 El. 127.15  
B.M. NE Cor. Conc. Drive W.S. Drive to House #3619 Elmwood El. 116.58

SCALE 1"=80' Horiz. 1"=8' Vert. Note Book No. JI 53



LAT. 57 DCS. #12  
CITY OF WICHITA KANSAS  
L.K. WHITE CITY ENGINEER  
Proj. No. C21-40

