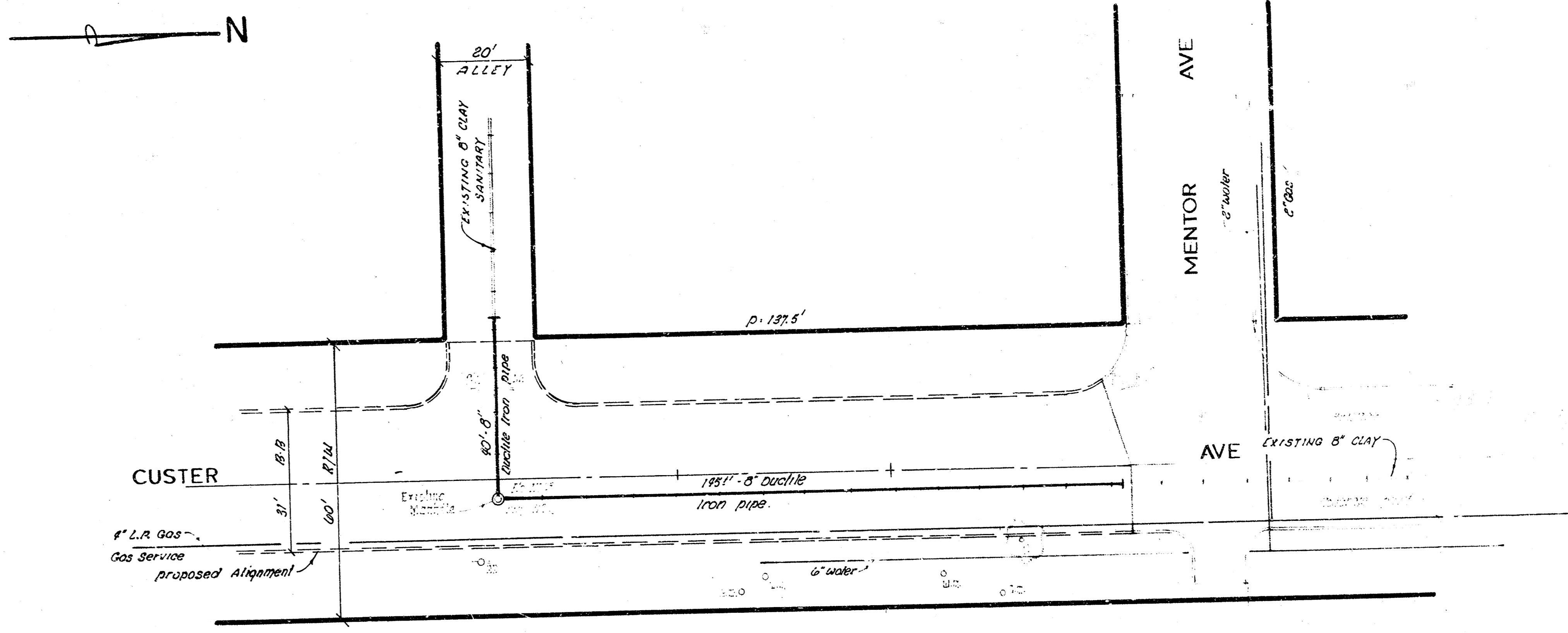
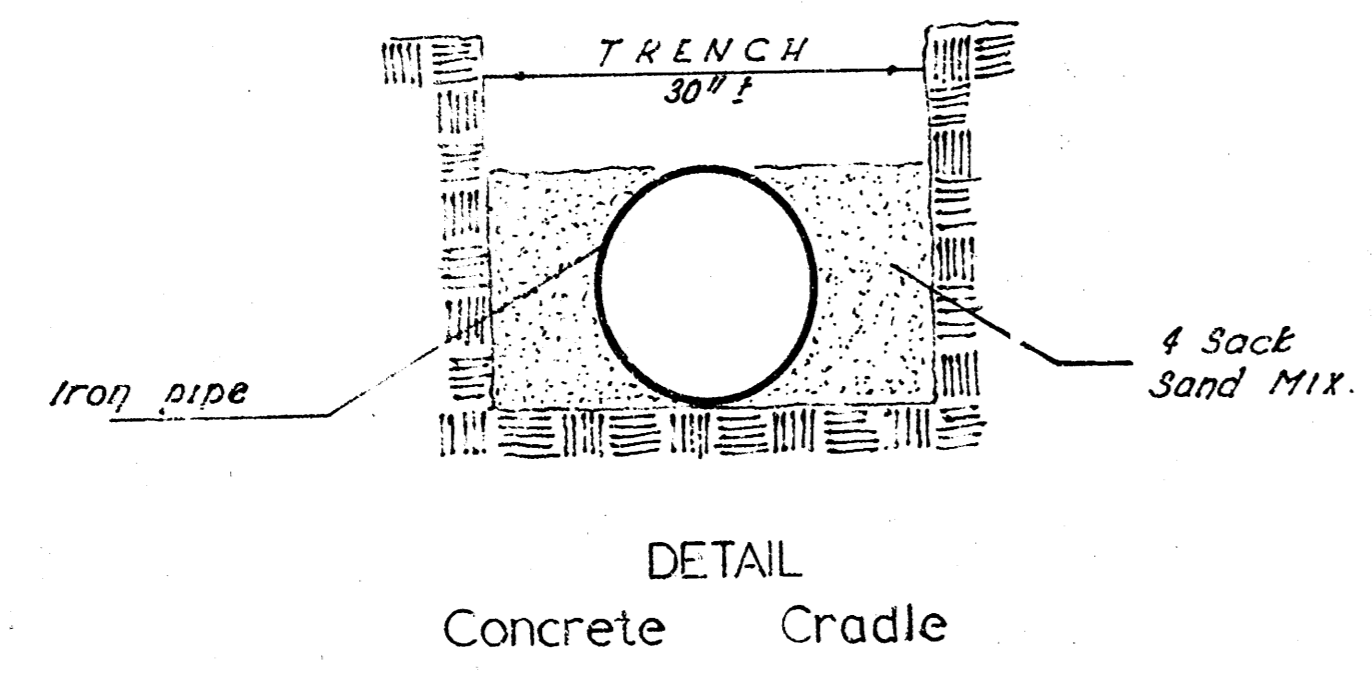


Sheet 17 of 17
 Dec 1970



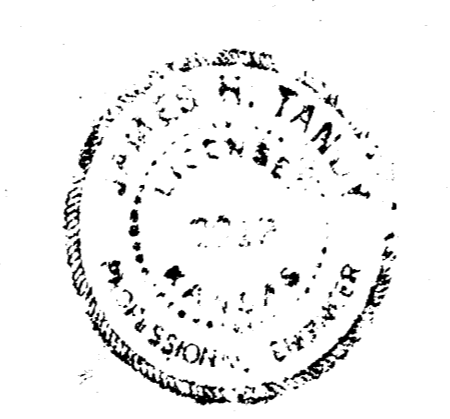
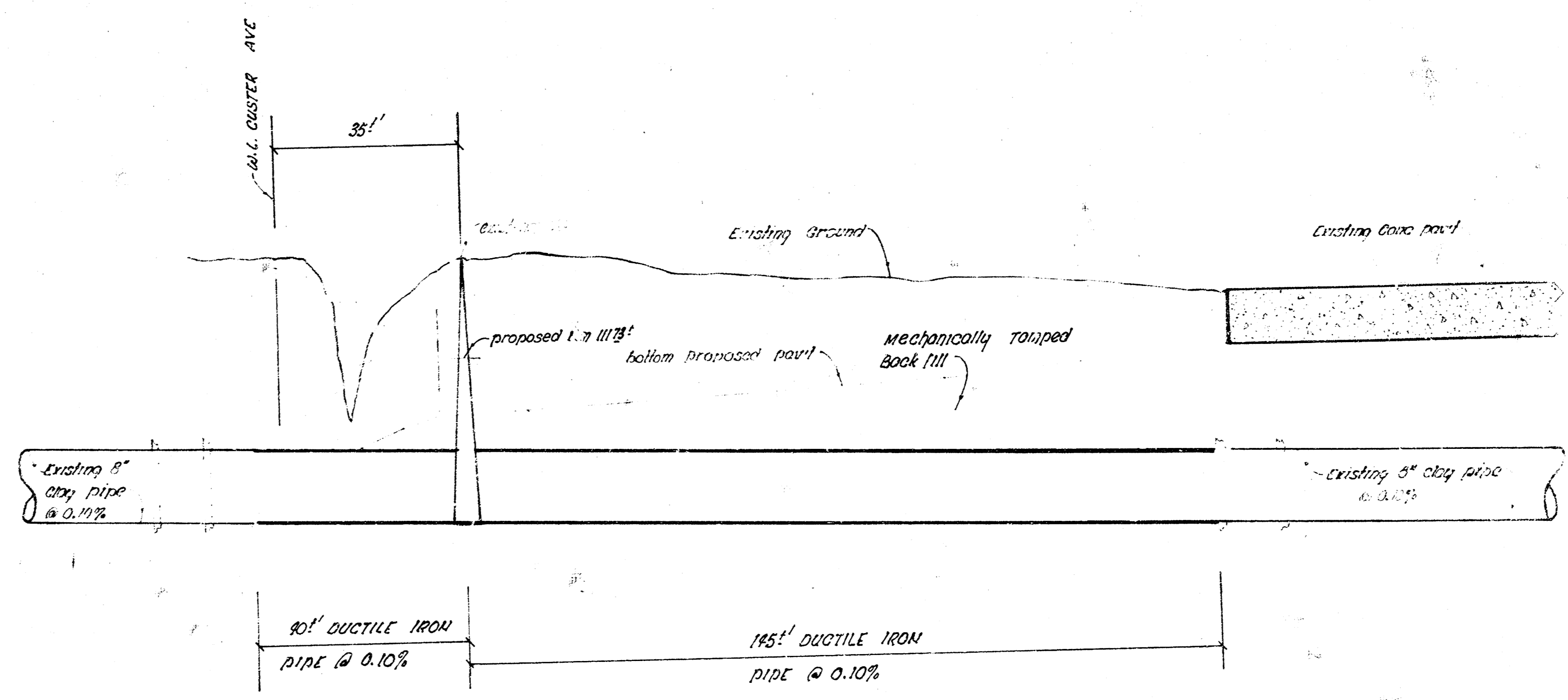
BID PRICE for 100 feet 8" ductile iron pipe is to include the removal of existing 8" clay line.

BID ITEM "ADJUST MANHOLE" shall include all material and labor to adjust existing manhole to proposed grade.

MANHOLE CASTING to have wide flange.

NOTE: COMPACTED BACKFILL - cost included in bid price for pipe.

PLAN SCALE 1" = 20'
 PROFILE 1" = 20' Horiz
 1" = 1' Vert



RE-CONSTRUCTION of Sanitary Sewer in connection with paving Custer Ave S.L. University to S.L. Mentor.

CITY OF WICHITA, KANSAS
 R. W. LINN CITY ENGINEER.

DATE MAY 1972 Proj. No. DAKS571042

115
 114
 113
 112
 111
 110
 109