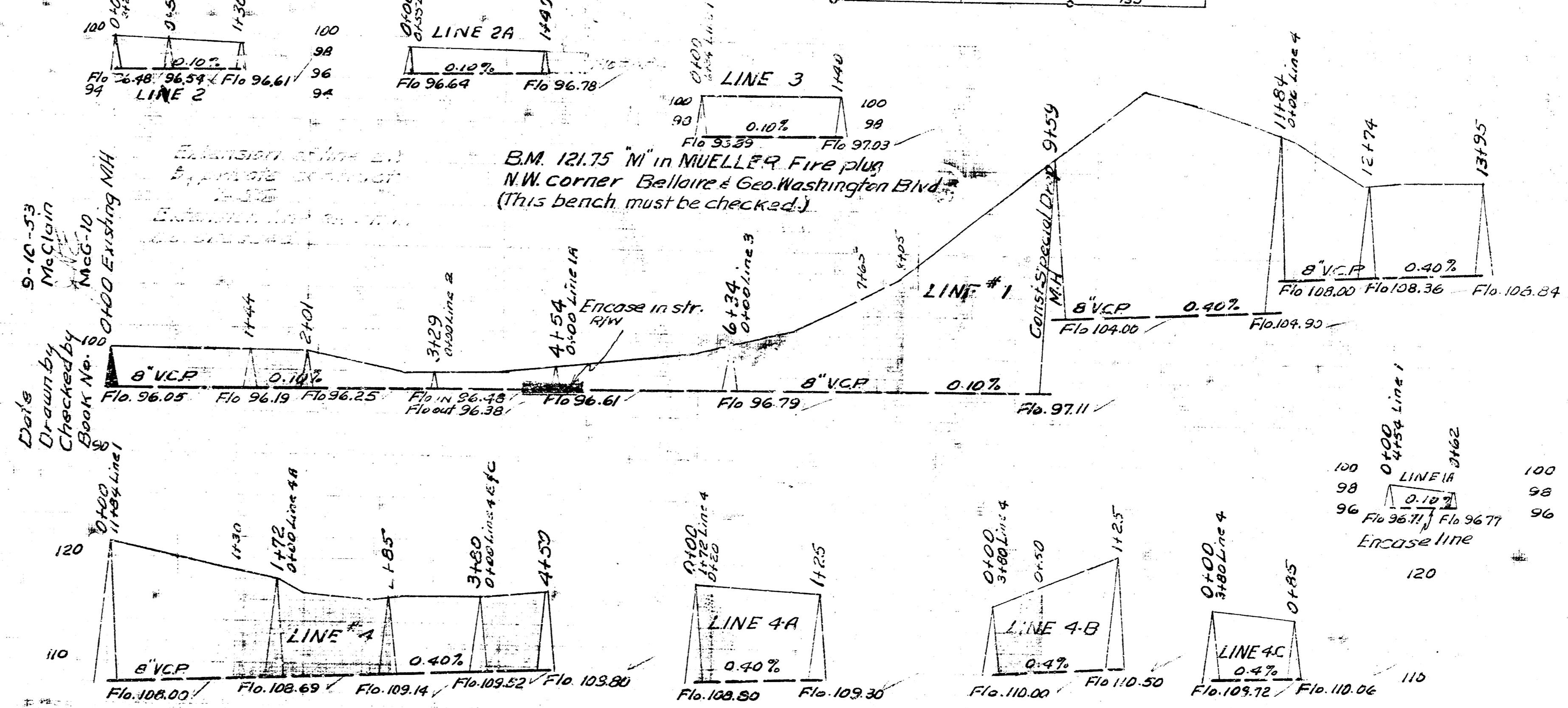
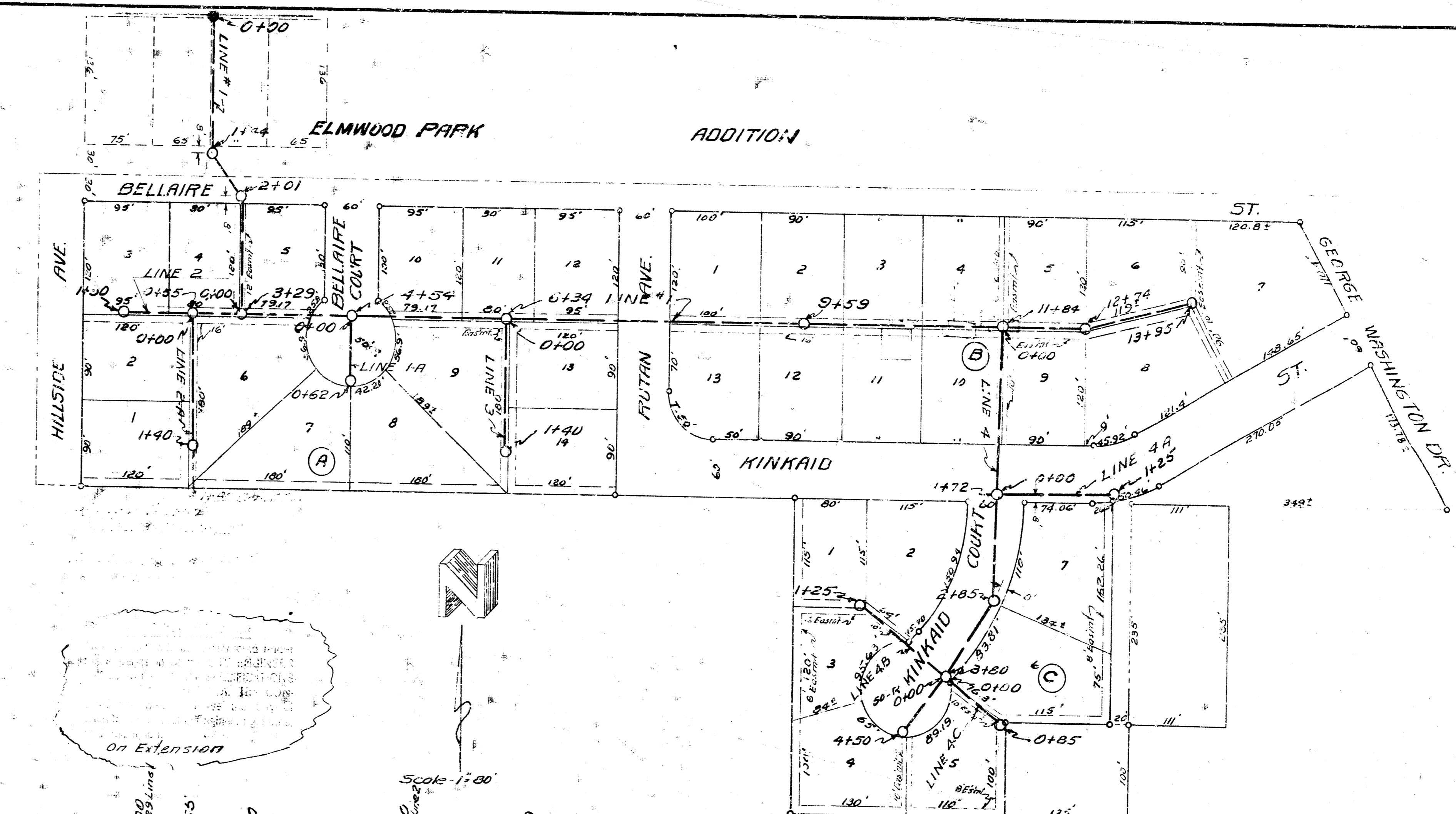


NOTE: Engineer shall note all trees and fence removal as payment will be made on his report



Date 8-11-53
Drawn by McClain
Checked by Book No. 80-Y

Date 8-10-53
Drawn by McClain
Checked by Book No. 80-Y

LAT 10 SUB B 5521
CITY OF WICHITA KANSAS
B.E. SMITH CITY ENGINEER
Proj No. C-23-38

LAT 35 DCS-2 5512
CITY OF WICHITA KANSAS
B.E. SMITH CITY ENGINEER
Proj No. C-23-42

Lines 1 & 4A inside of Bellaire Courts shall be encased

Note: All shaded area to be sand fill.
All pipe with less than 30" cover shall be encased with concrete (6" around pipe)
All pipe with 12" or over of cover shall be cradled in concrete (see detail)
All trees under 12" shall be classed as small trees.