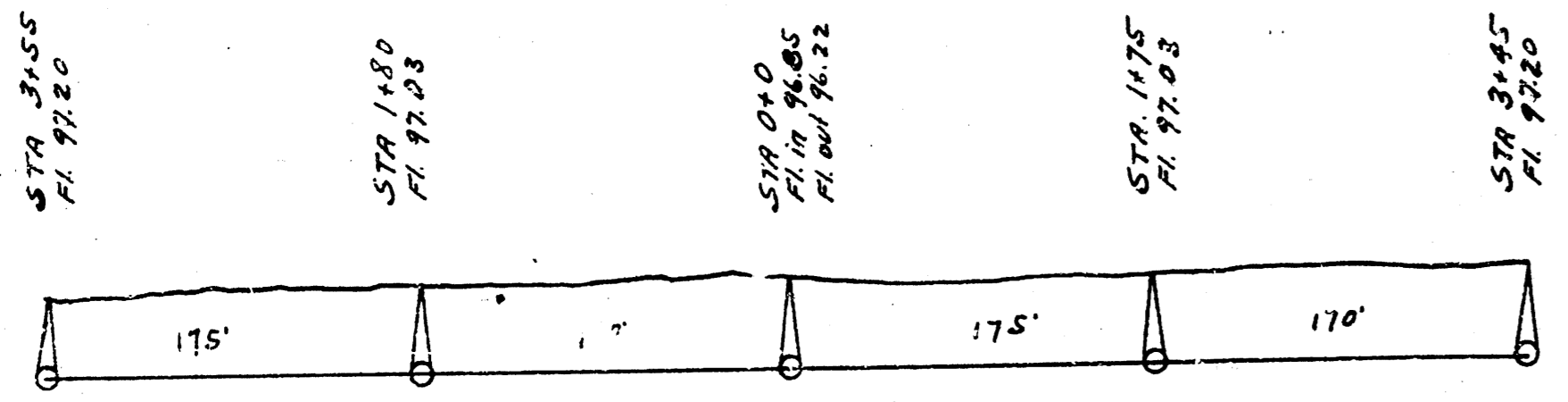
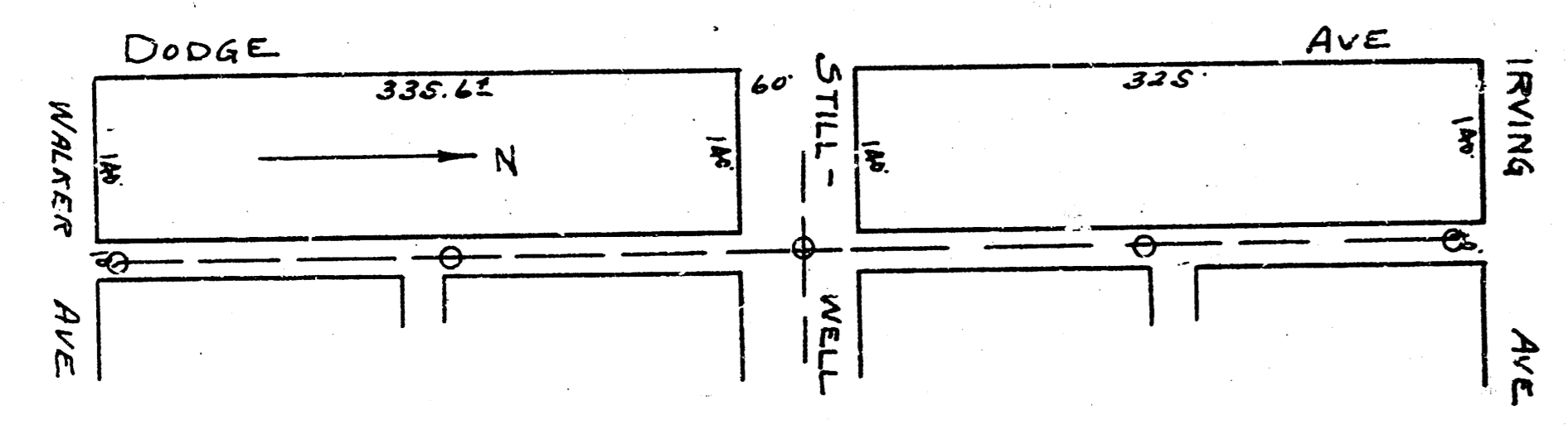
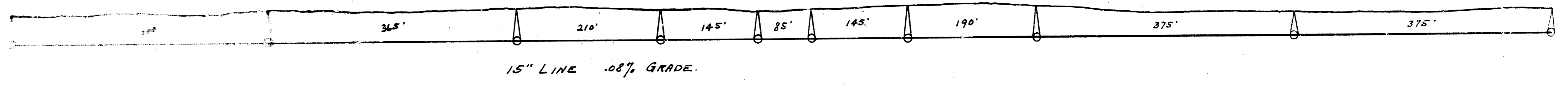
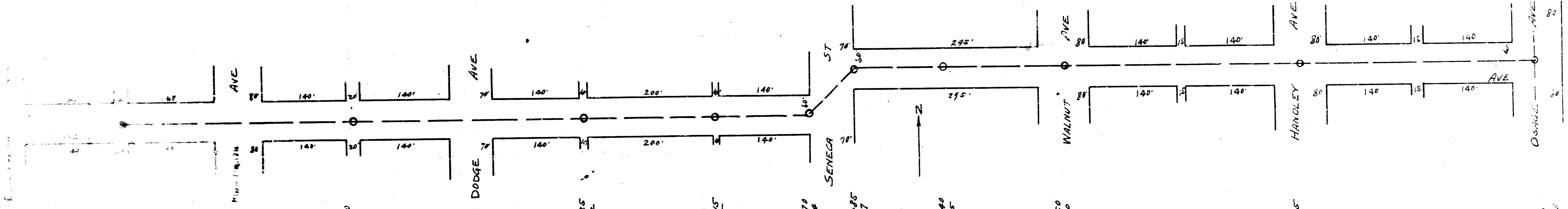
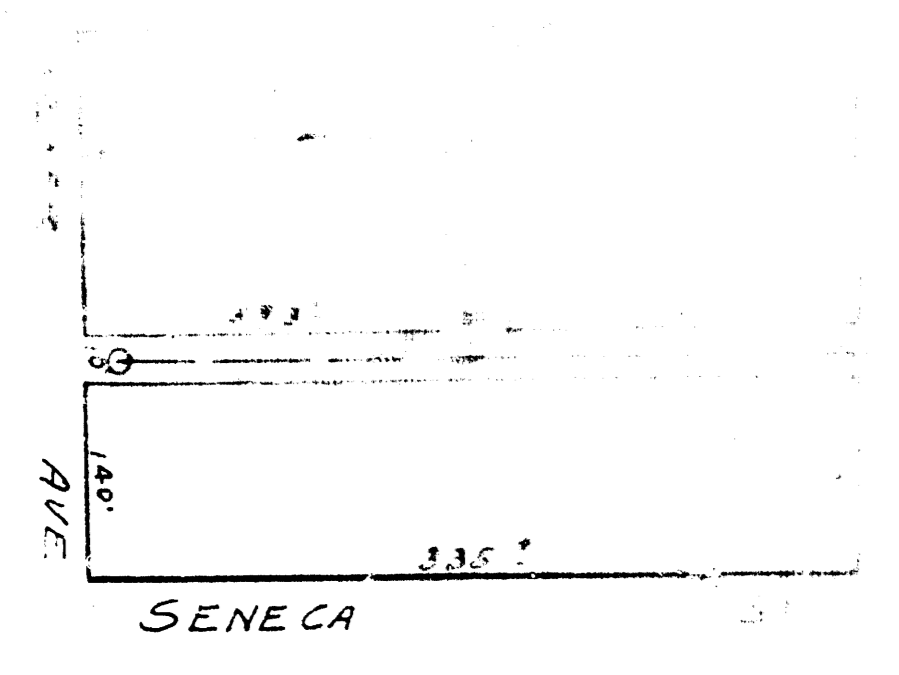
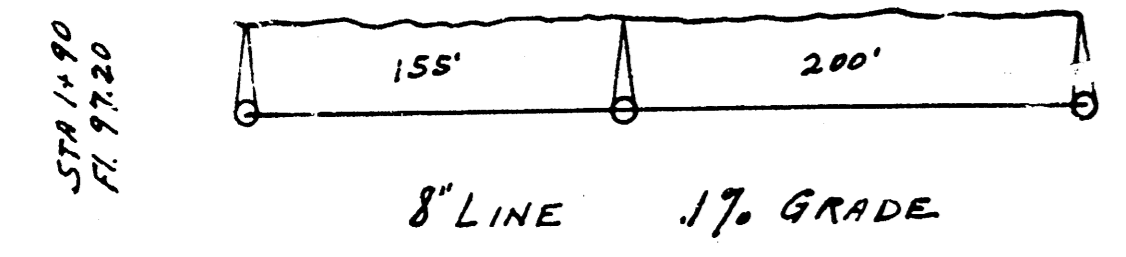
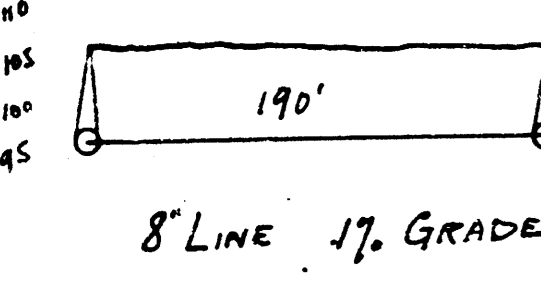
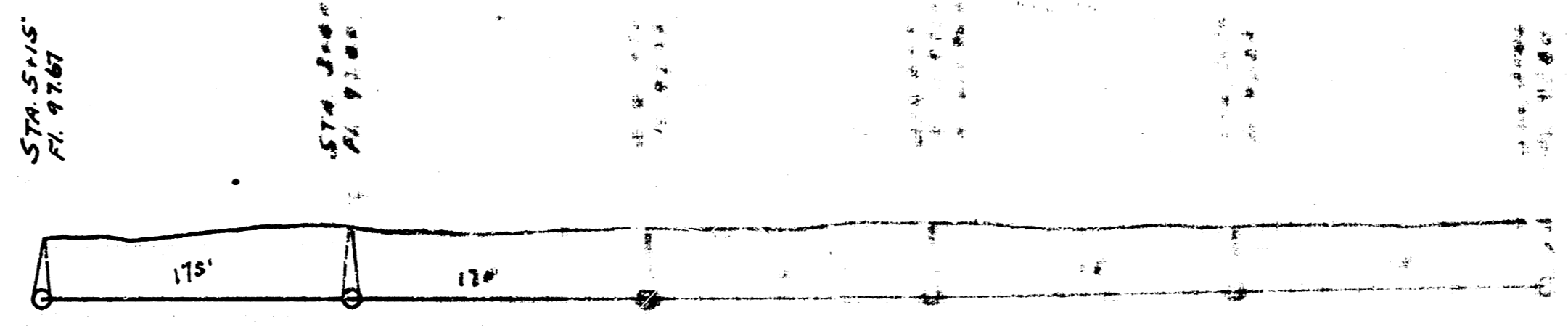
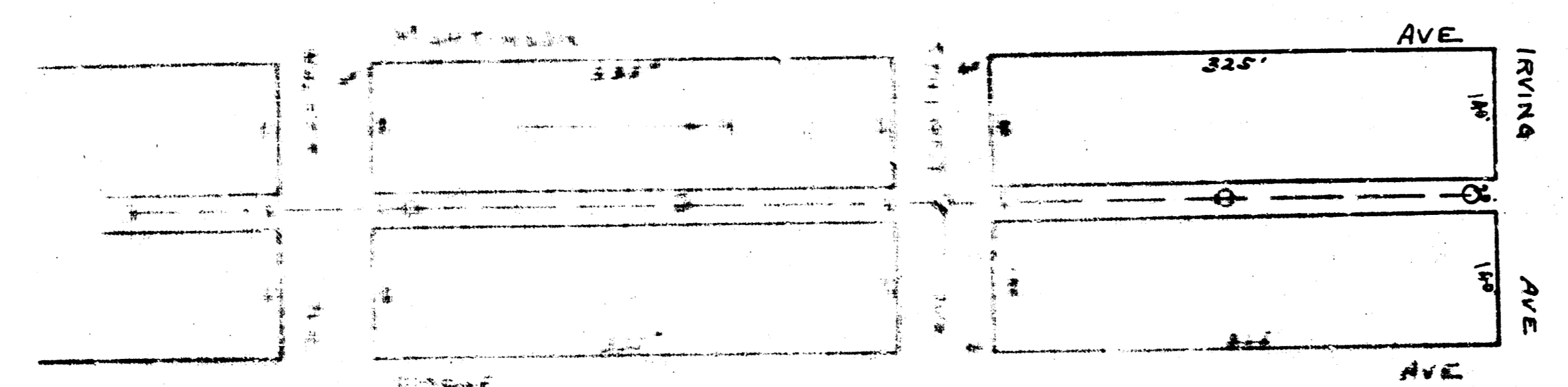


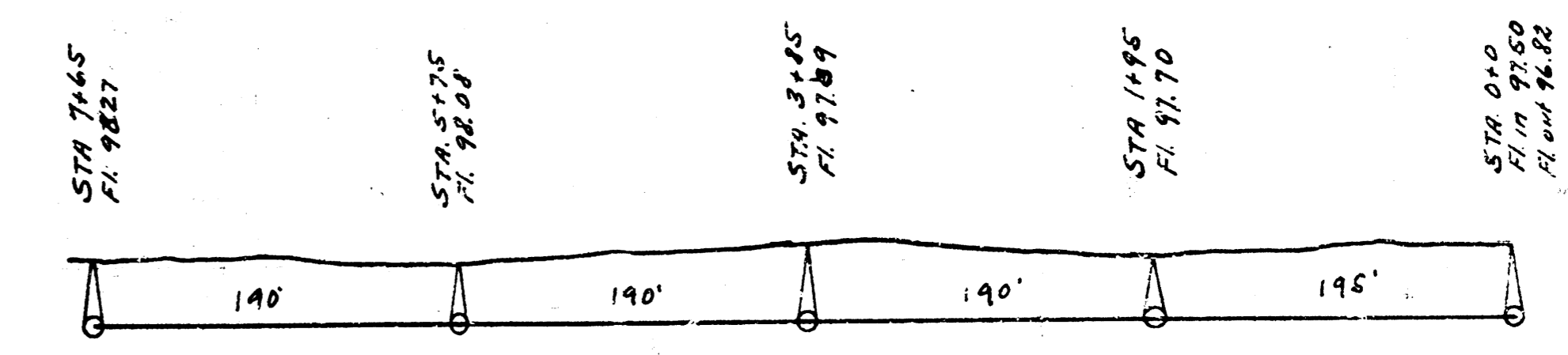
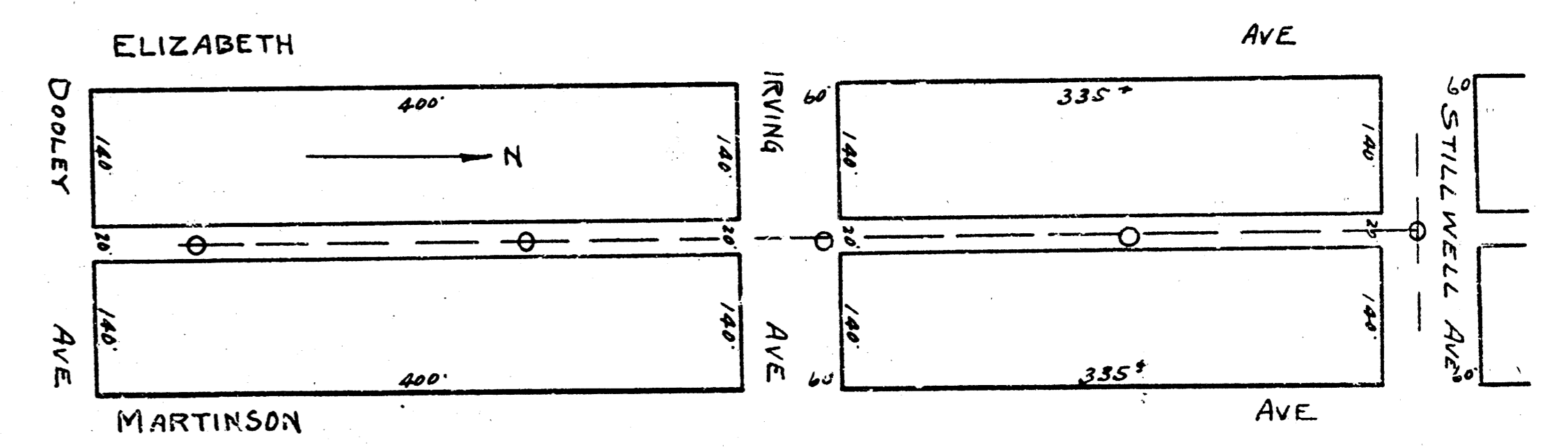
STA 0+00
PI 96.00
PI 96.00



8' LINE 1% GRADE.



8' LINE 1% GRADE.

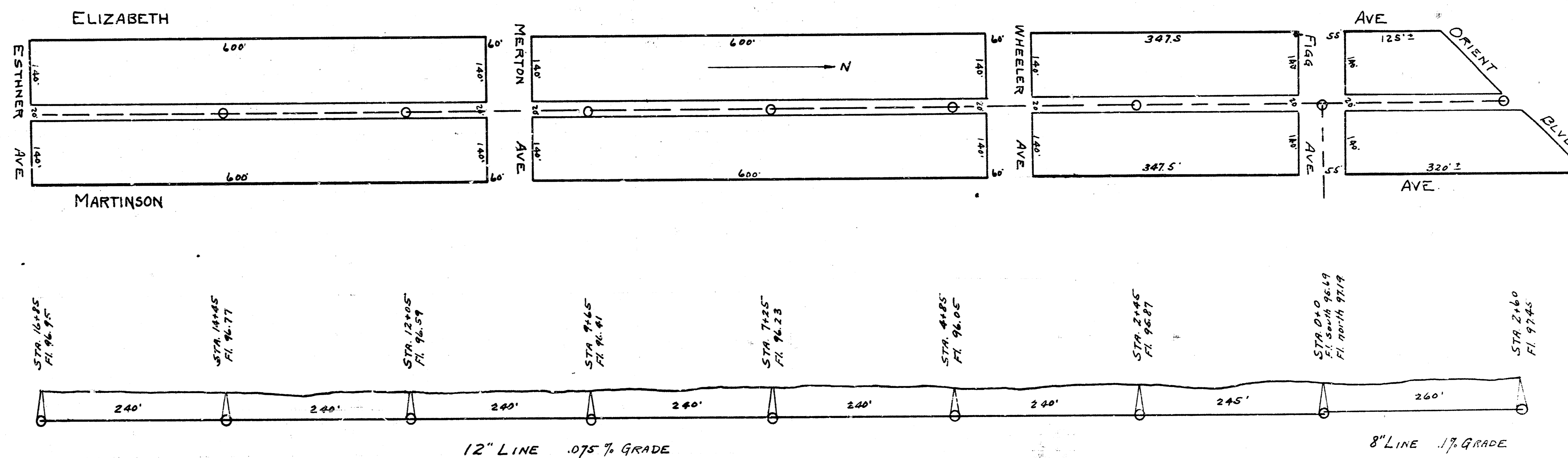
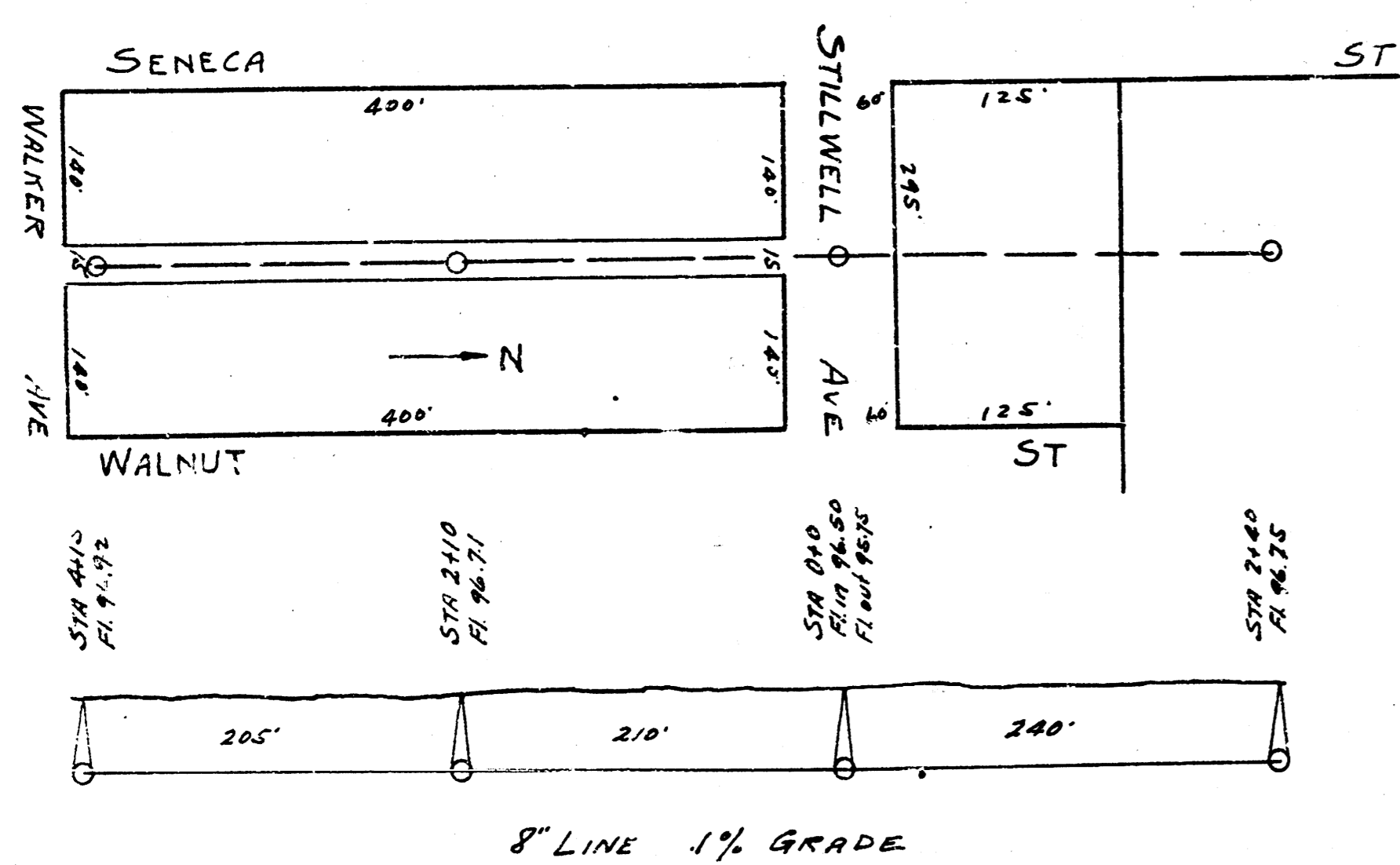
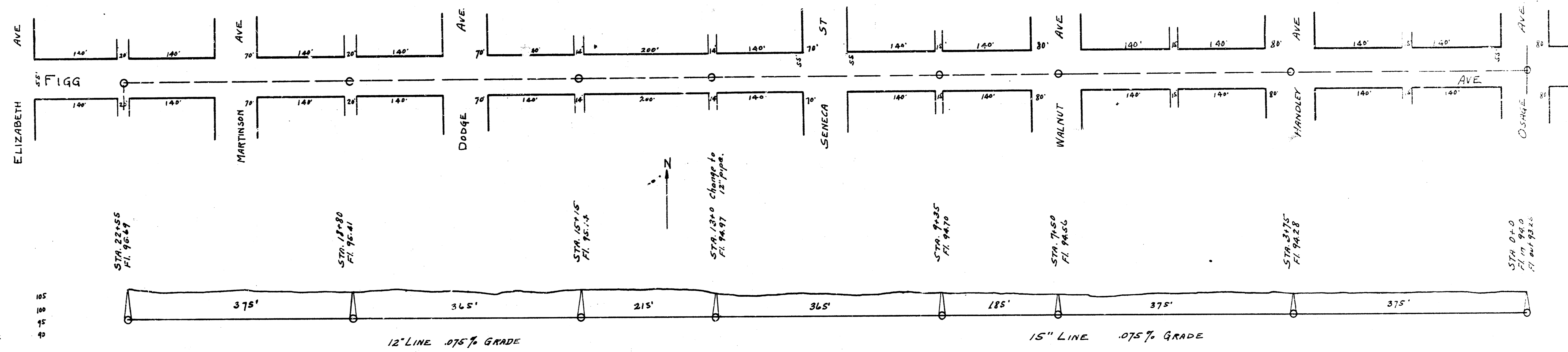


8' LINE 1% GRADE.

BM 106.99 B in Branch frt. Wk. S.E. Robert and Stillwell
BM 102.24 Sid. S.W. cor. Seneca + Wheeler.

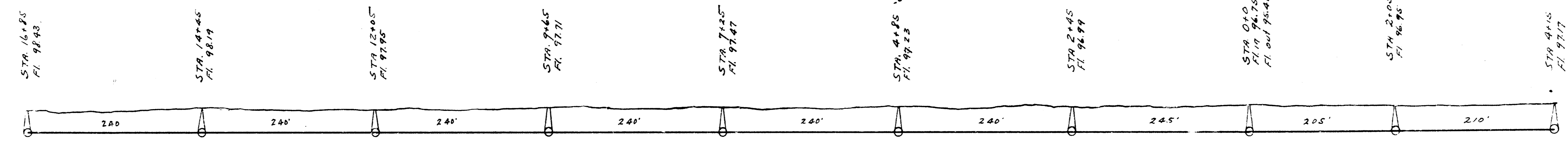
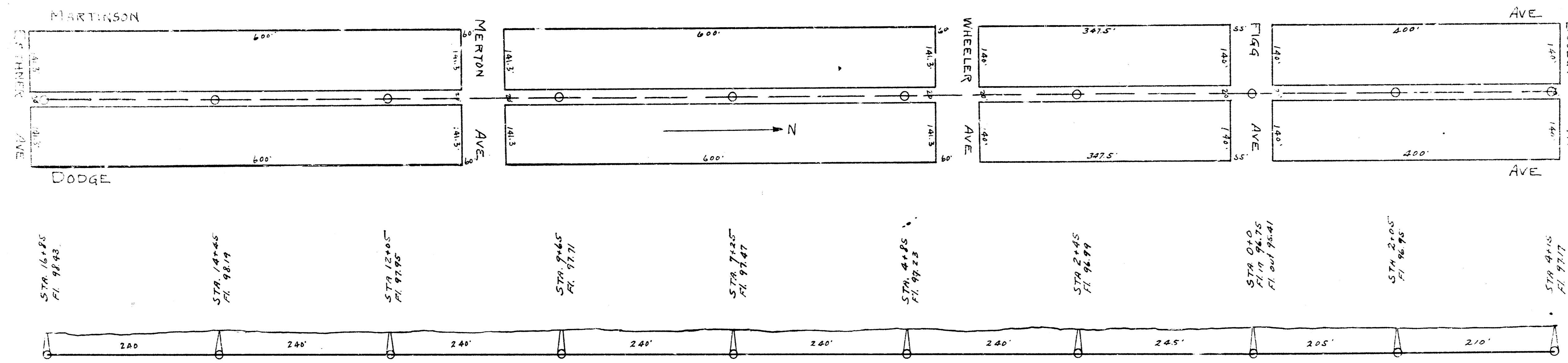
DIST. S.S. 21.
SHEET 1 of 4 SHEETS

B.M. 10515 B in Branch ch. of Wk N. NE. Dodge & Figg.
 B.M. 10560 L in Long H of Wk N. NE. Marlinton & Figg.

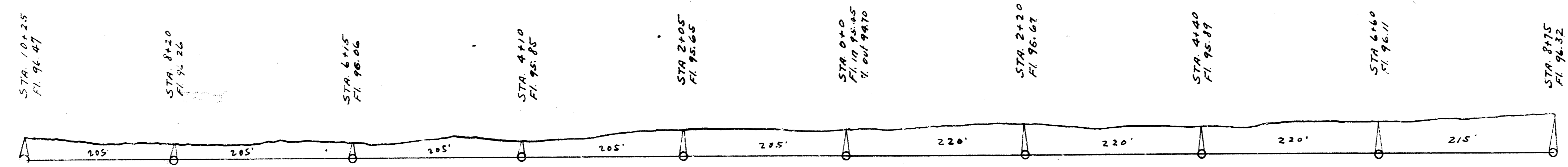
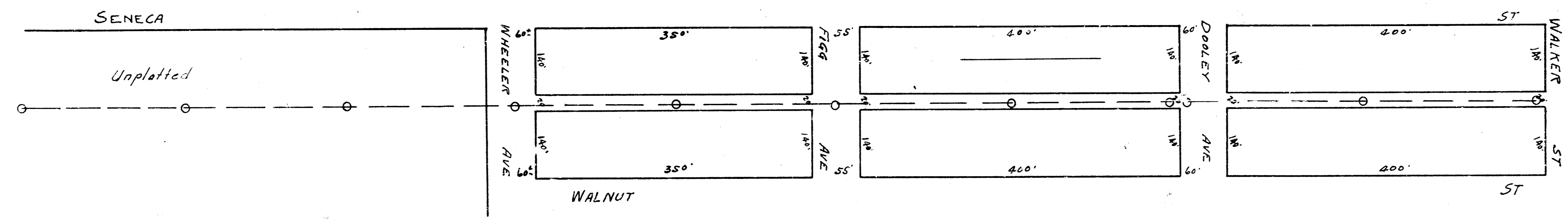


B.M. 10502 J in Jones on cb. N.S. Wheeler, E.S. of alley W. of Marlinton

DIST. E, S.S. 21.
 SHEET 2 of 4 SHEETS



8" LINE 1% GRADE.



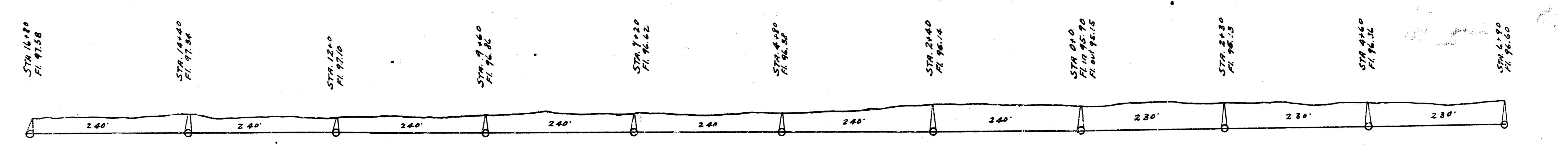
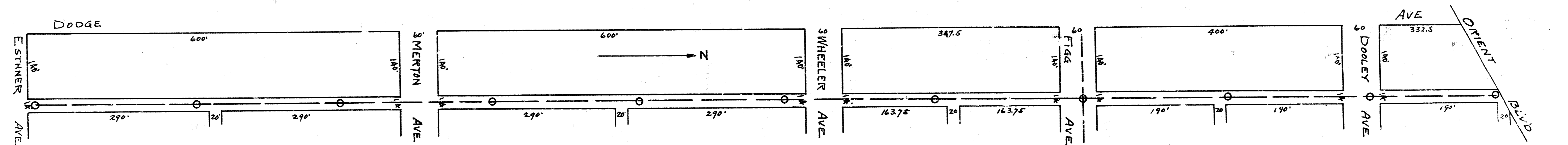
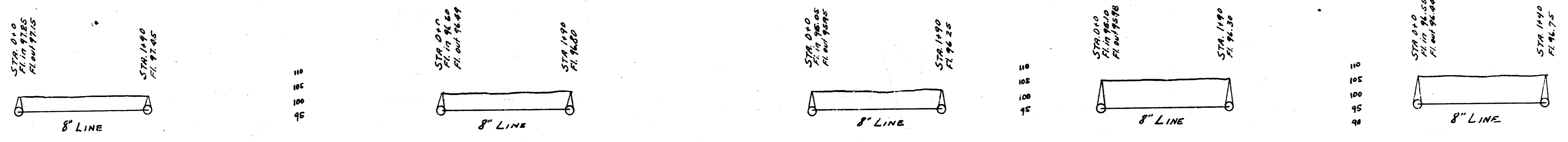
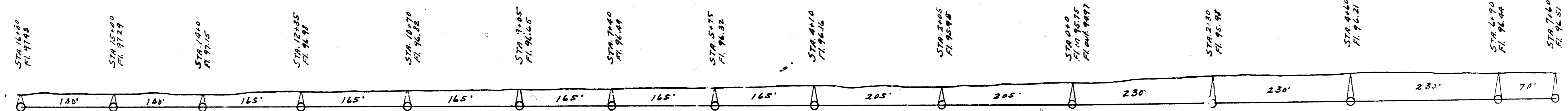
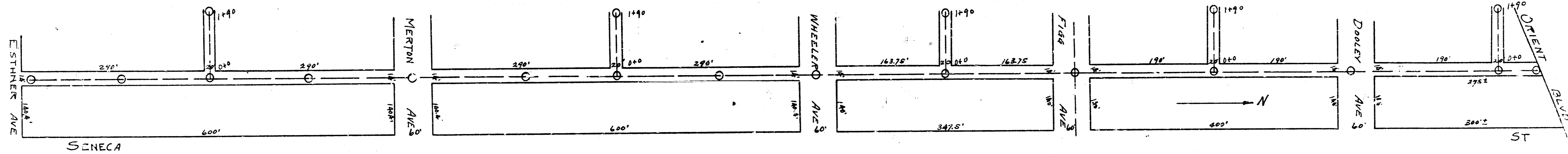
8" LINE 1% GRADE.

8" LINE 1% GRADE.

BM 10347 on cb ENE. SENECA + F199
 BM 10229 Std. SW Cor. Seneca + Wheeler

DIST. E, S.S. 21.

SHEET 3 OF 4 SHEETS



8" LINE 1% GRADE.

B.M. 103.45 J in Jones on s. end of W. cb. 1st alley bet W. of Seneca, S.S. of Wheeler.
 B.M. 103.80 J in Jones bk nk. W.S. of 2nd alley, W. of Seneca, N.S. Wheeler.
 B.M. 104.24 J in Jones bk nk E.M.E. Dodge + Wheeler.
 B.M. 105.02 J in Jones N. end cb bet E.S. of alley W. of Marston on Wheeler.

DIST. E, SS. 21.

SHEET 4 SHEETS

Handwritten signature or initials