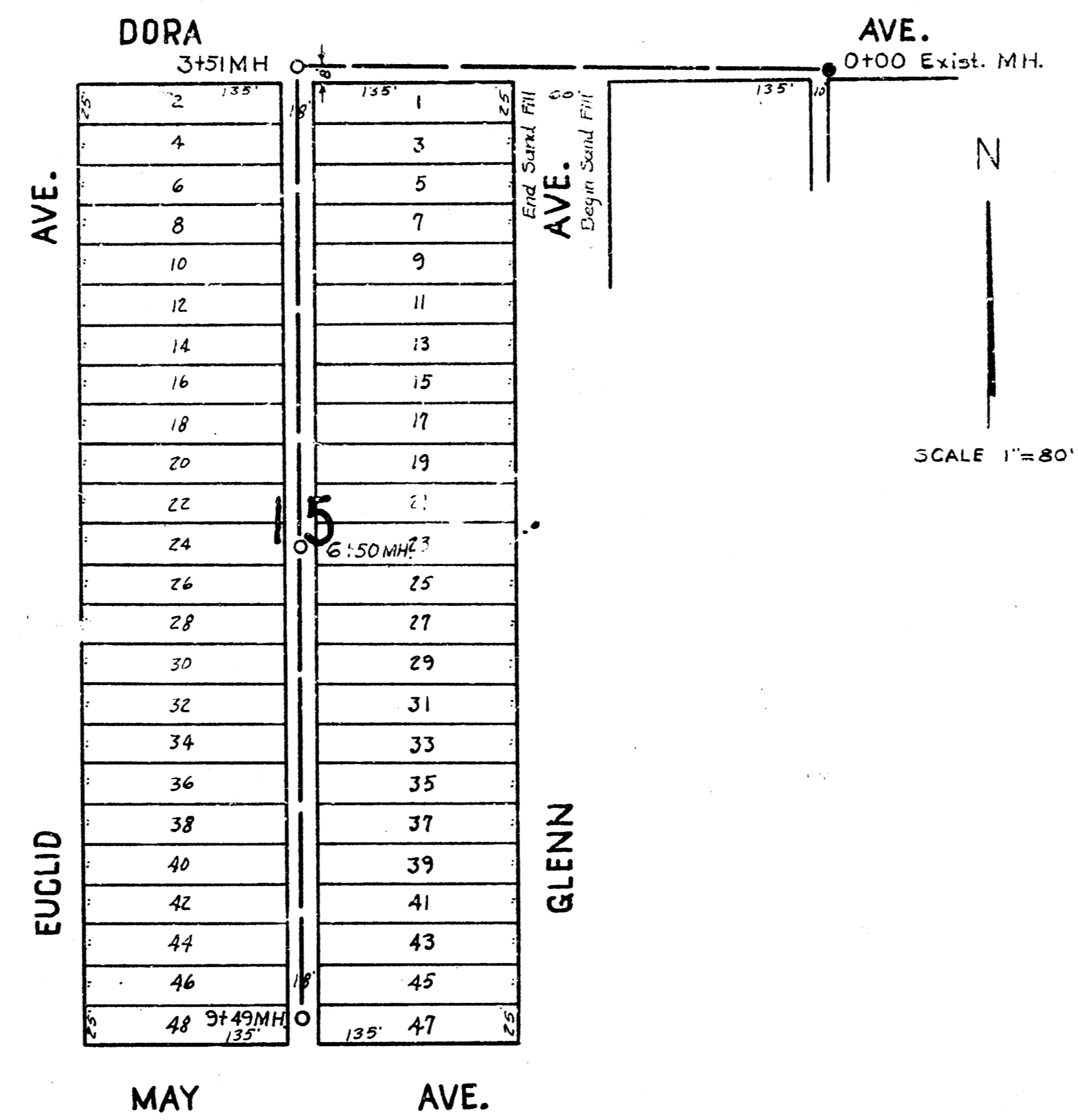
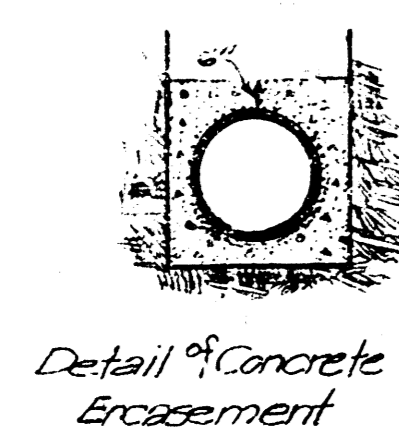
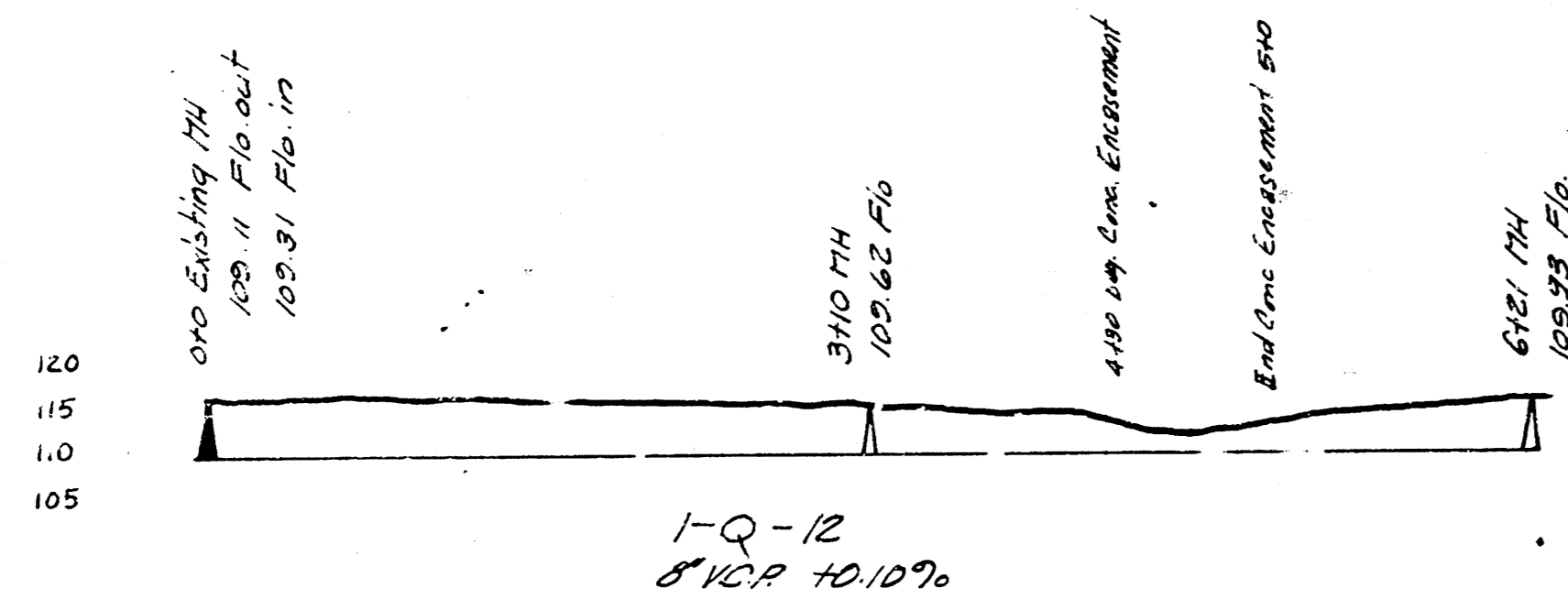


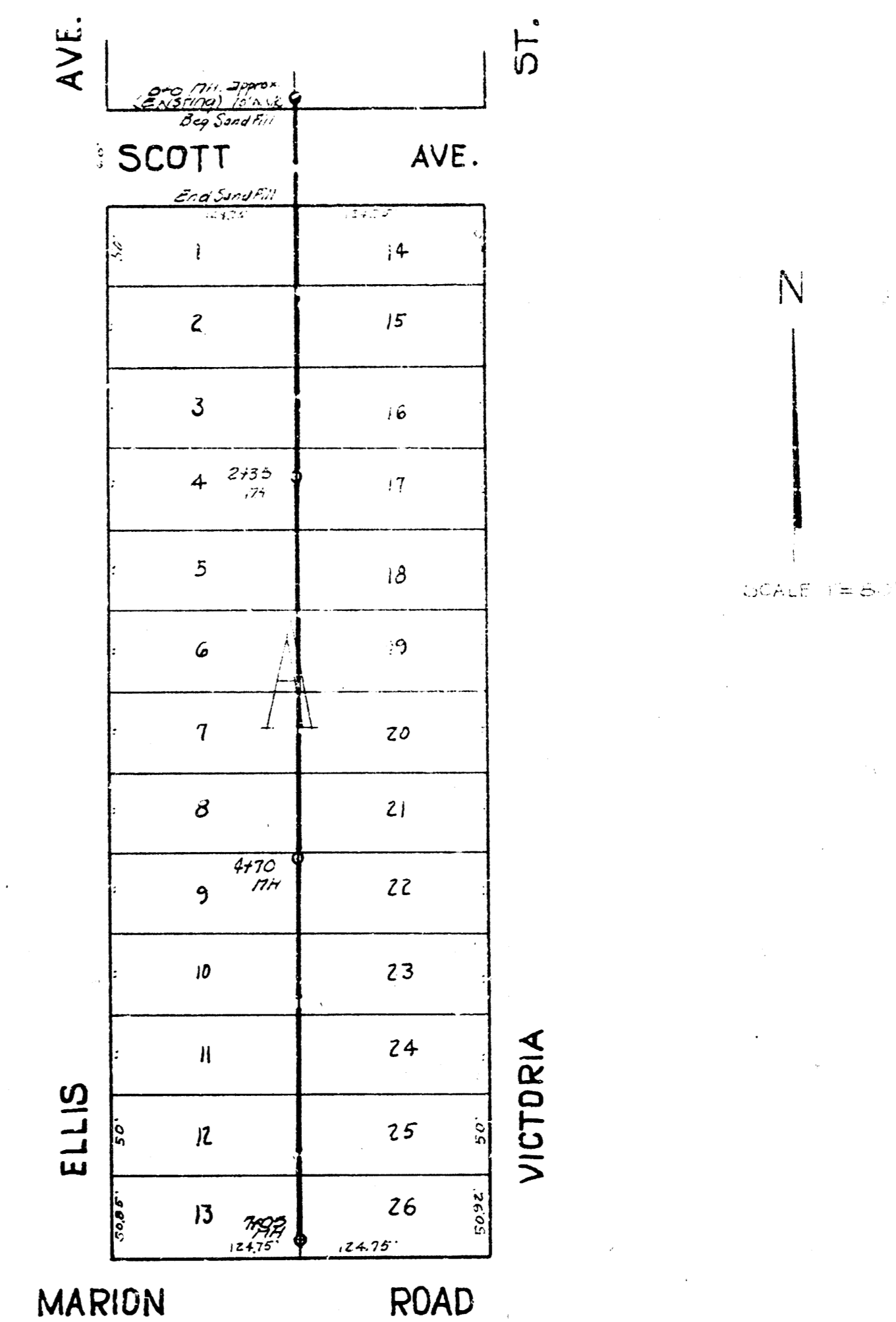
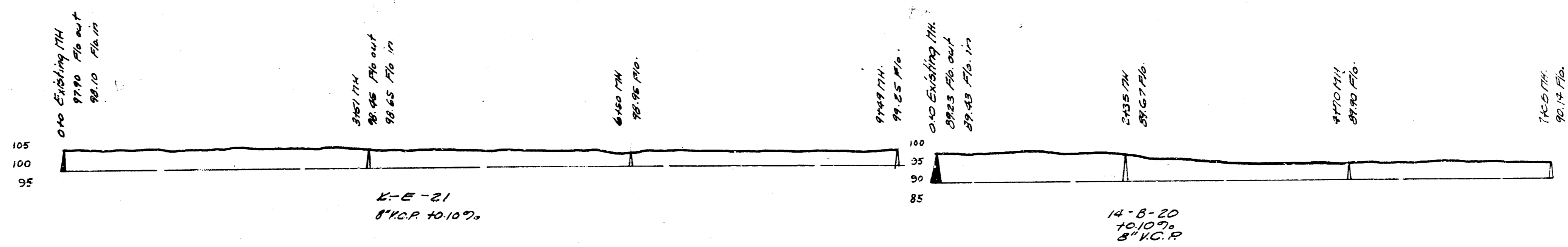
LAT. 1, DIST. Q, S.S.*12
PROJECT NO. C 20-17

B. M. 118.97 N.W. Cor. Conc. Porch Ho # 1114 N. Ash.
B. M. 115.83 East Rim M. H. 0+00.



LAT. K, DIST. E, S.S.*21
PROJECT NO. C 20-14

B. M. 103.02 "G" in Globe E. cb. Vine N.L. May.



LAT. 14, DIST. E, S.S.*20
PROJECT NO. C 29-63

B. M. 99.63 "T" in F. R. Greenwood & Pawnee.
B. M. 97.26 Ab. Rim M.H. at Sta. 0+00.

Lat. 1, Dist. Q, S.S.*12 - Lat. K, Dist. E, S.S.*21.
Lat. 14, Dist. E, S.S.*20
City of Wichita, Kansas
L. H. White City Engineer
Date 3-27-30 Proj. Nos. C20-17
C20-14
C29-63