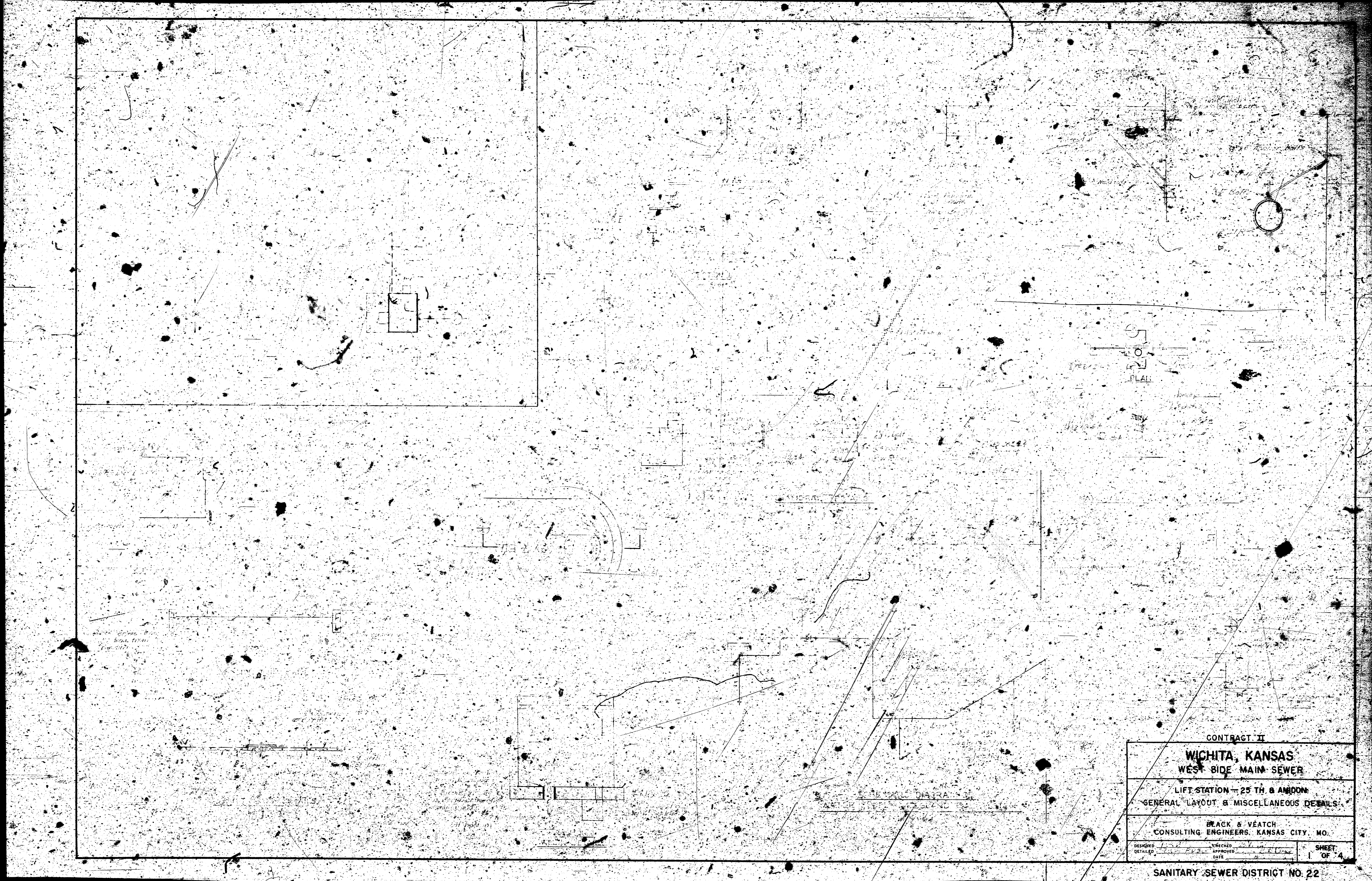


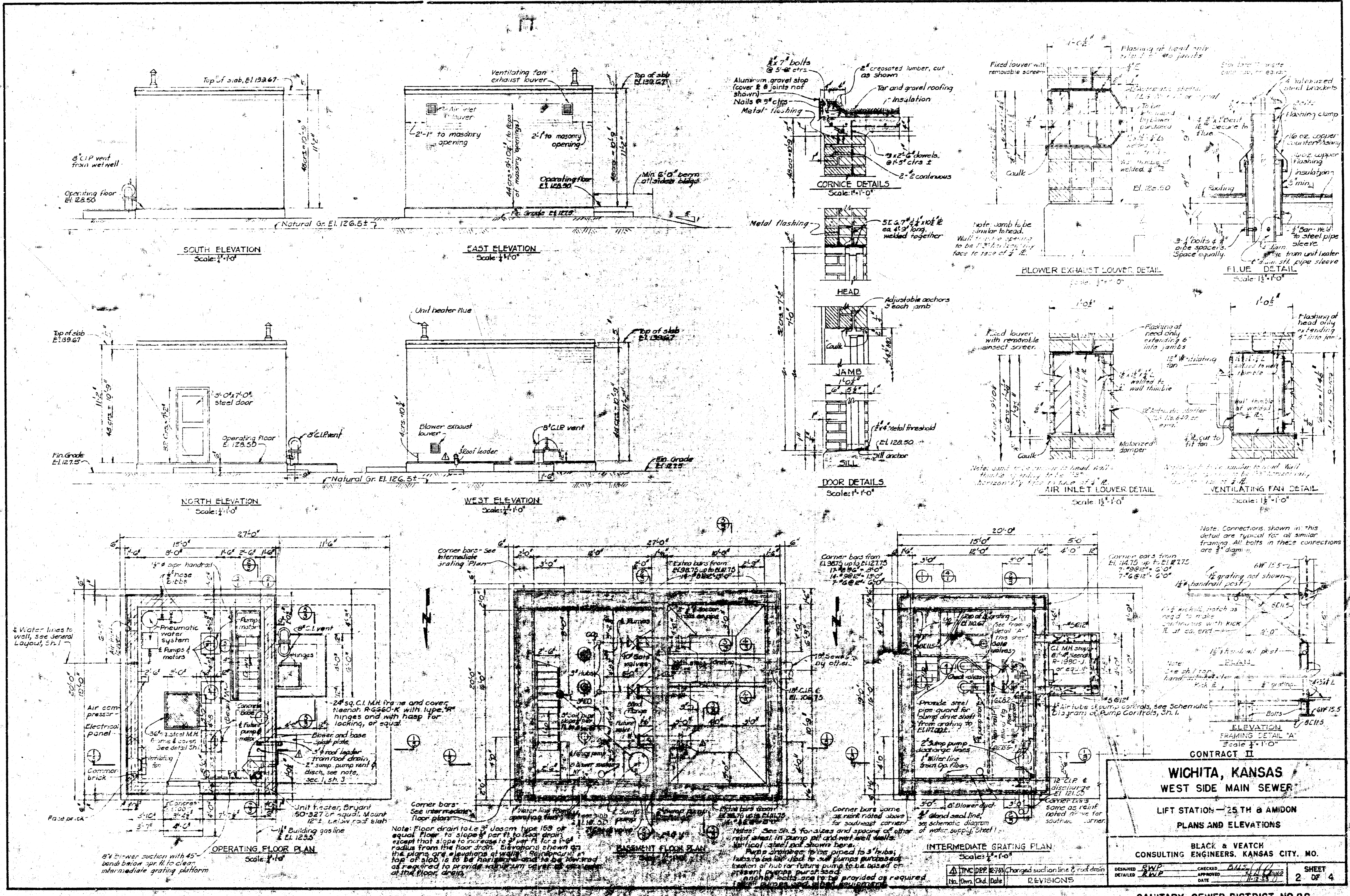
PLANS FOR
SEWERAGE IMPROVEMENTS
WICHITA, KANSAS
WEST SIDE MAIN SEWER
LIFT STATION - 25TH AND AMIDON
CONTRACT II
SANITARY SEWER DISTRICT NO. 22

BLACK & VEATCH
CONSULTING ENGINEERS
KANSAS CITY, MISSOURI
1953



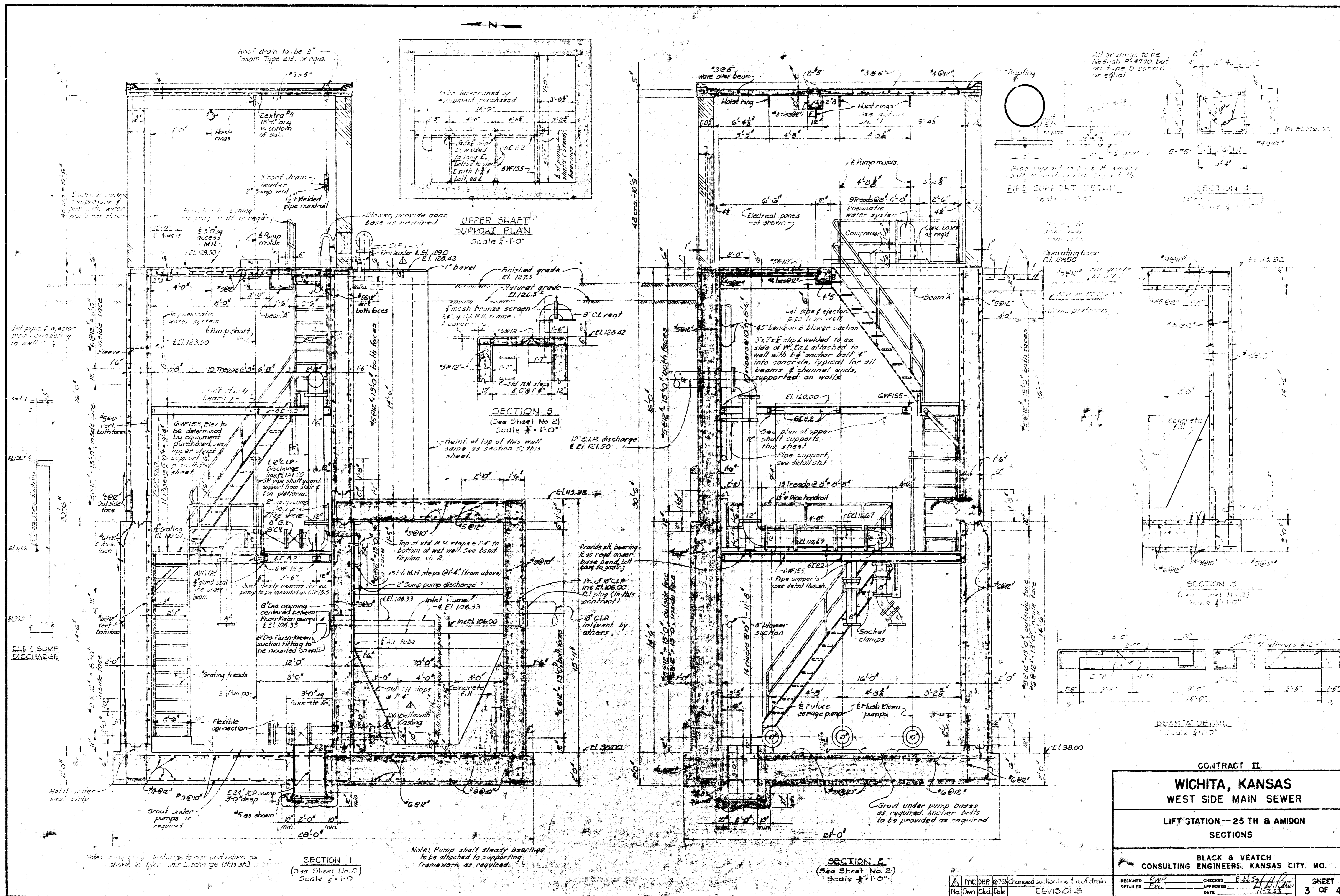
CONTRACT II
WICHITA, KANSAS
WEST SIDE MAIN SEWER
LIFT STATION - 25 TH & ANCHOR
GENERAL LAYOUT & MISCELLANEOUS DETAILS
BLACK & VEATCH
CONSULTING ENGINEERS, KANSAS CITY, MO.
DESIGNED BY [Signature] CHECKED BY [Signature]
DRAWN BY [Signature] APPROVED BY [Signature]
DATE [Date] SHEET 1 OF 4

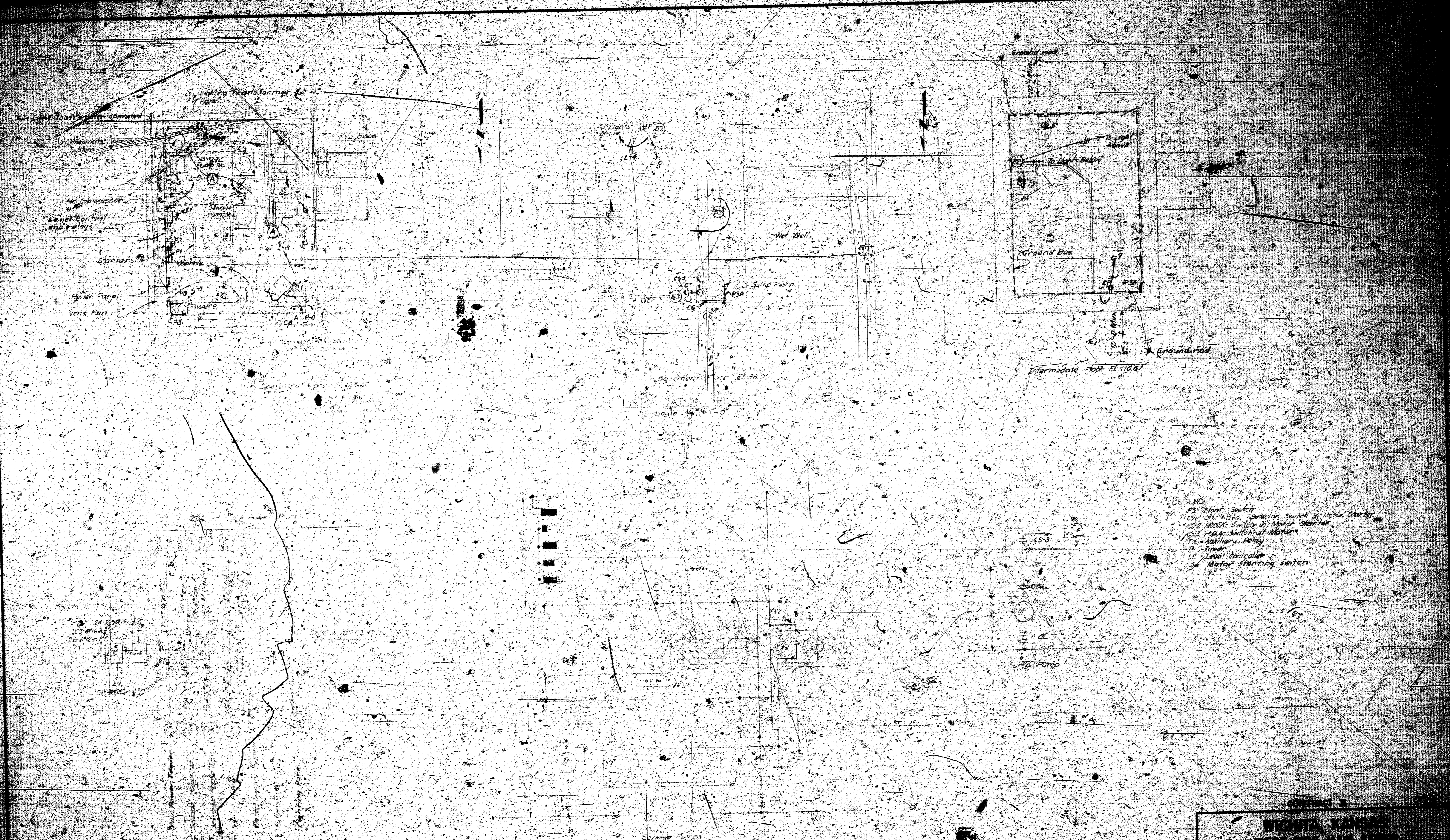
SANITARY SEWER DISTRICT NO. 22



CONTRACT II	
WICHITA, KANSAS	
WEST SIDE MAIN SEWER	
LIFT STATION - 25TH & AMIDON	
PLANS AND ELEVATIONS	
BLACK & VEATCH	
CONSULTING ENGINEERS, KANSAS CITY, MO.	
DESIGNED BY <i>[Signature]</i>	CHECKED BY <i>[Signature]</i>
DRAWN BY <i>[Signature]</i>	DATE <i>11-23-54</i>
SHEET 2 OF 4	

SANITARY SEWER DISTRICT NO. 22





FIXTURE SCHEDULE

NO.	FIXTURE	WATT	AMPS	EL.
1	Incandescent Light	100	1.0	100
2	Incandescent Light	100	1.0	100
3	Incandescent Light	100	1.0	100
4	Incandescent Light	100	1.0	100
5	Incandescent Light	100	1.0	100
6	Incandescent Light	100	1.0	100
7	Incandescent Light	100	1.0	100
8	Incandescent Light	100	1.0	100
9	Incandescent Light	100	1.0	100
10	Incandescent Light	100	1.0	100

- PS - Pilot Switch
- CS - Control Switch
- MS - Motor Switch
- AS - Auxiliary Relay
- LS - Level Switch
- MS - Motor starting switch

CONTACT 2
WICHITA, KANSAS
 WEST SIDE PUMP STATION
 LIFT STATION - WEST SIDE
 ELECTRICAL WORK
 CONTRACT NO. 1000-1000
 DATE 10/10/50