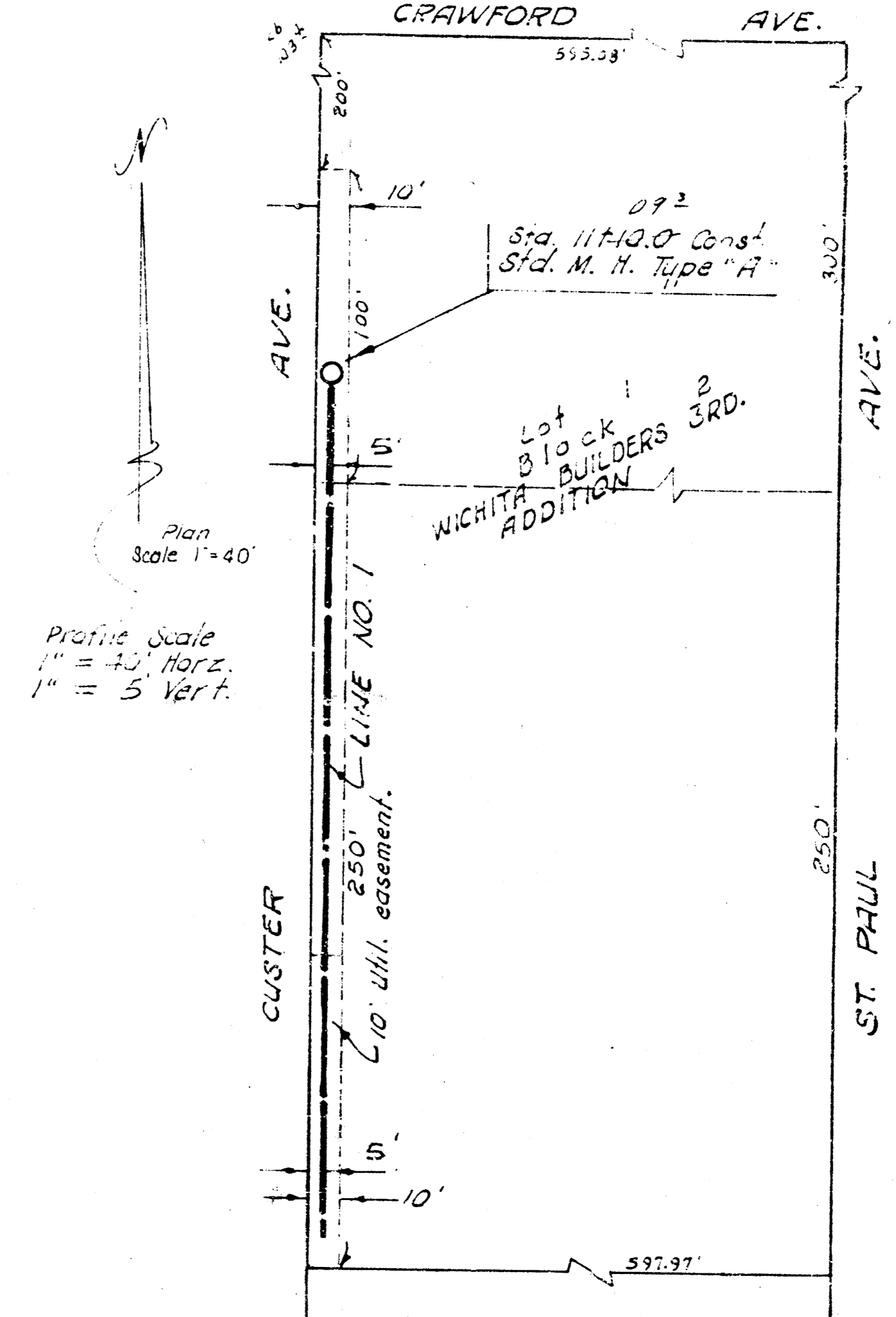
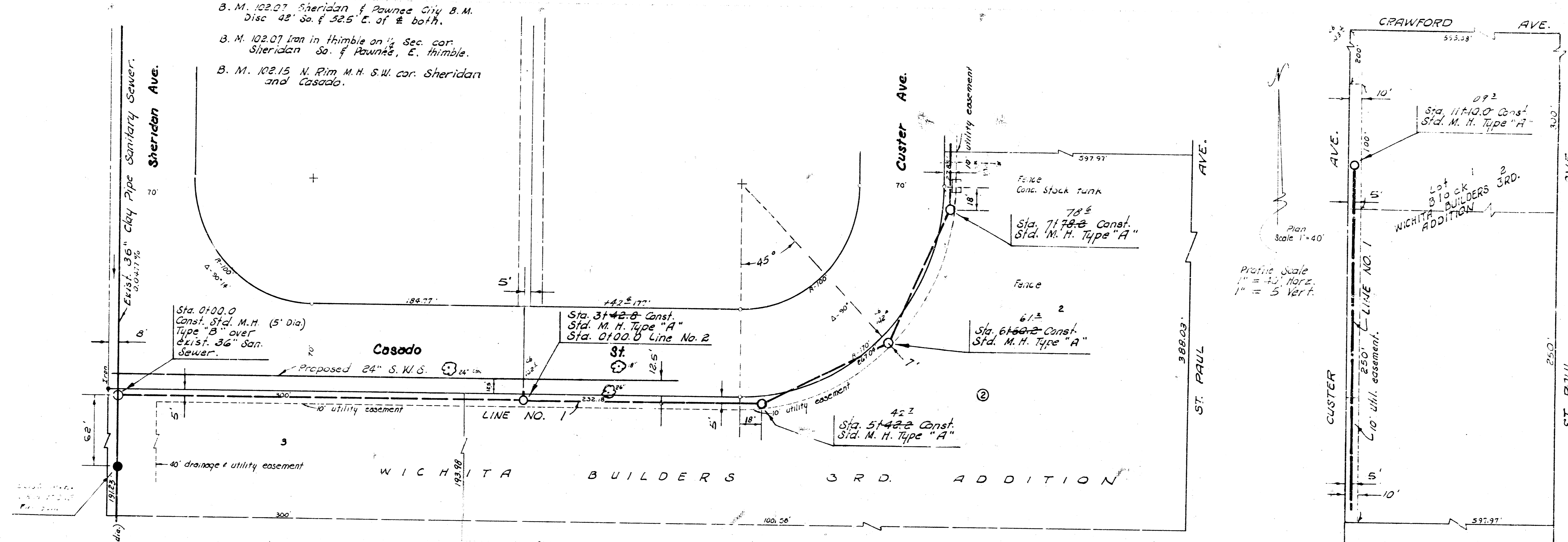


4/1/73
E.H.S.L.

B. M. 102.07 Sheridan & Pawnee City B.M.
Disc 42" dia. 52.5' E. of E. both.

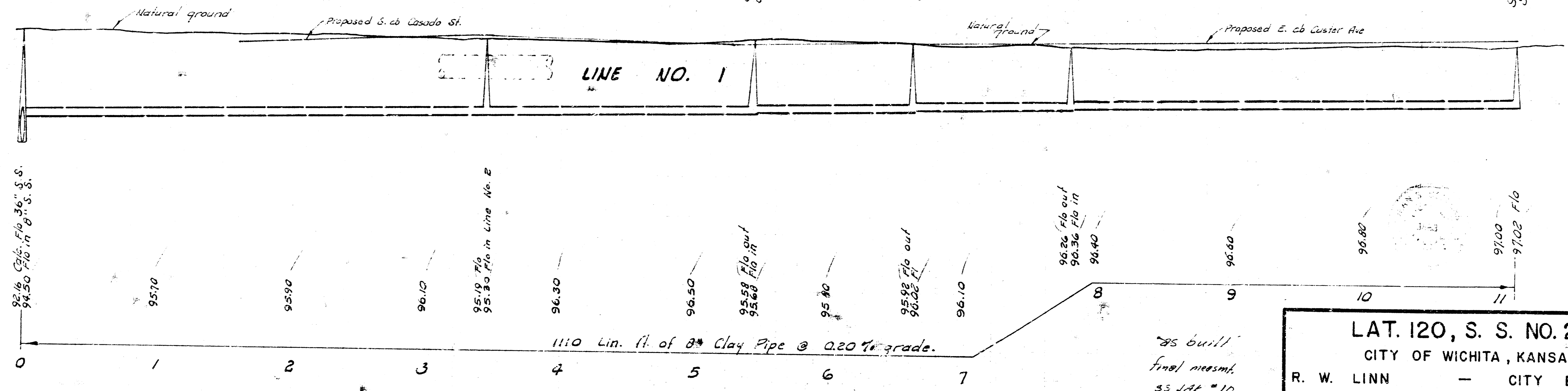
B. M. 102.07 iron in thimble on 1/4 Sec. cor.
Sheridan So. of Pawnee, E. thimble.

B. M. 102.15 N. Rim M.H. S.W. cor. Sheridan
and Casado.

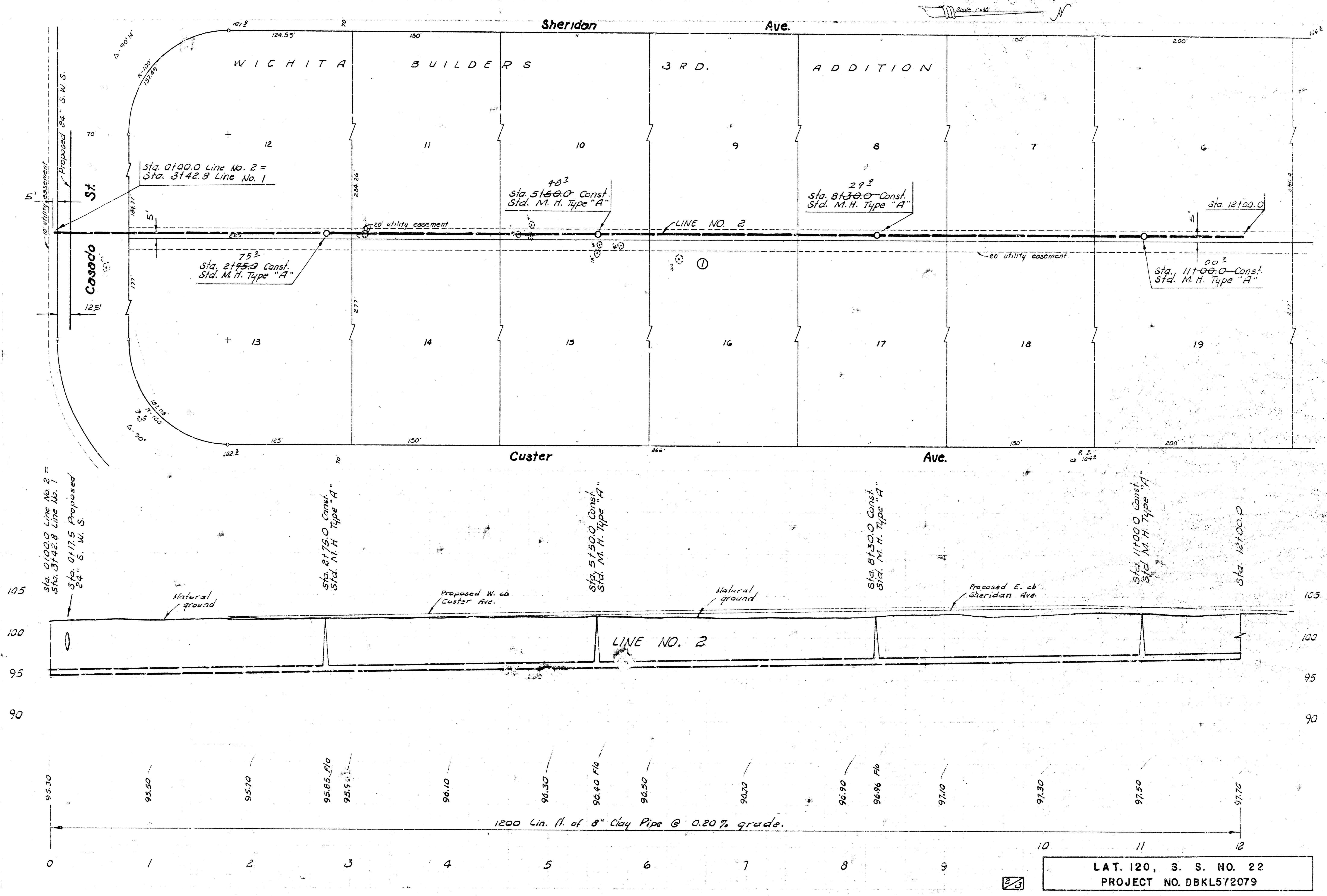


105
100
95
90

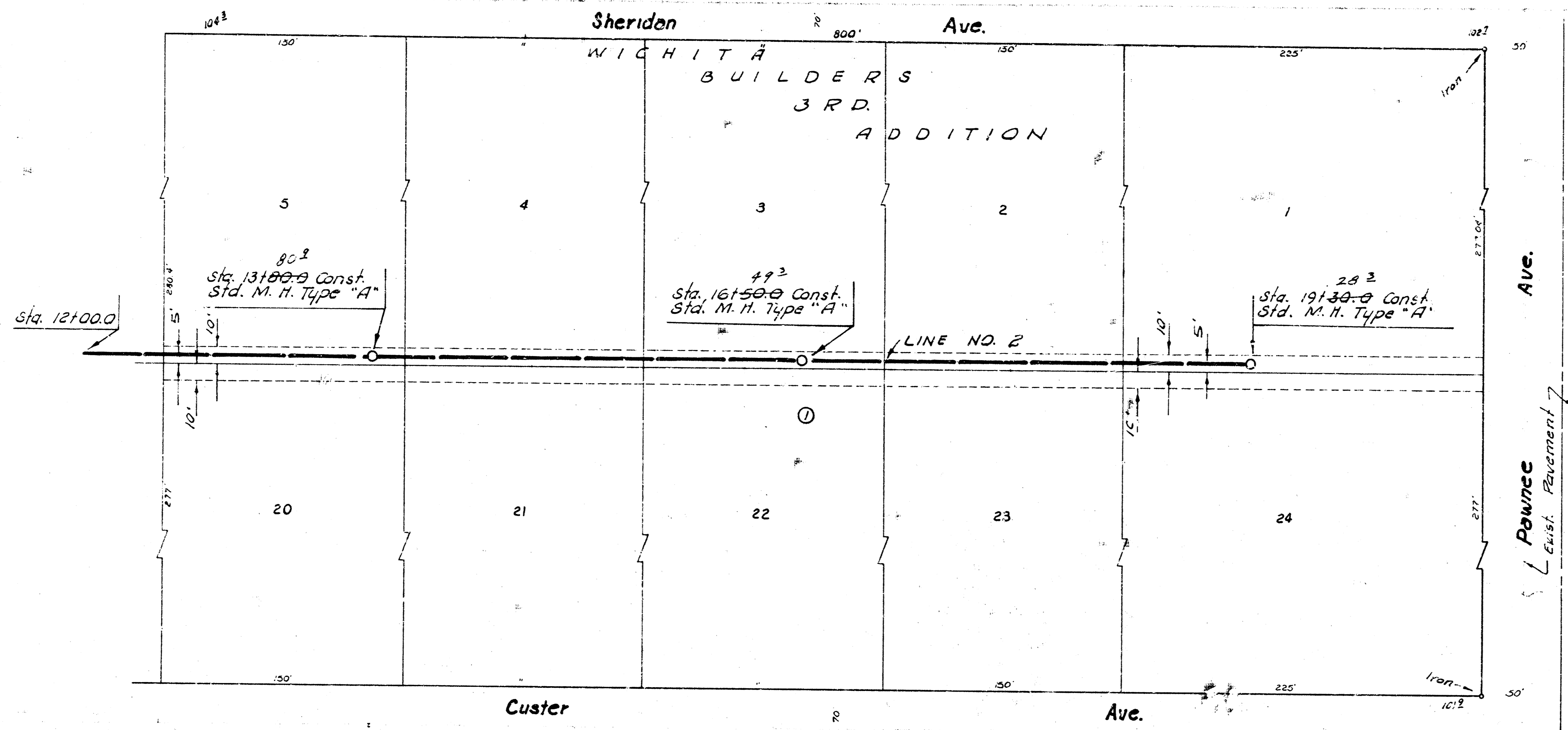
105
100
95
90



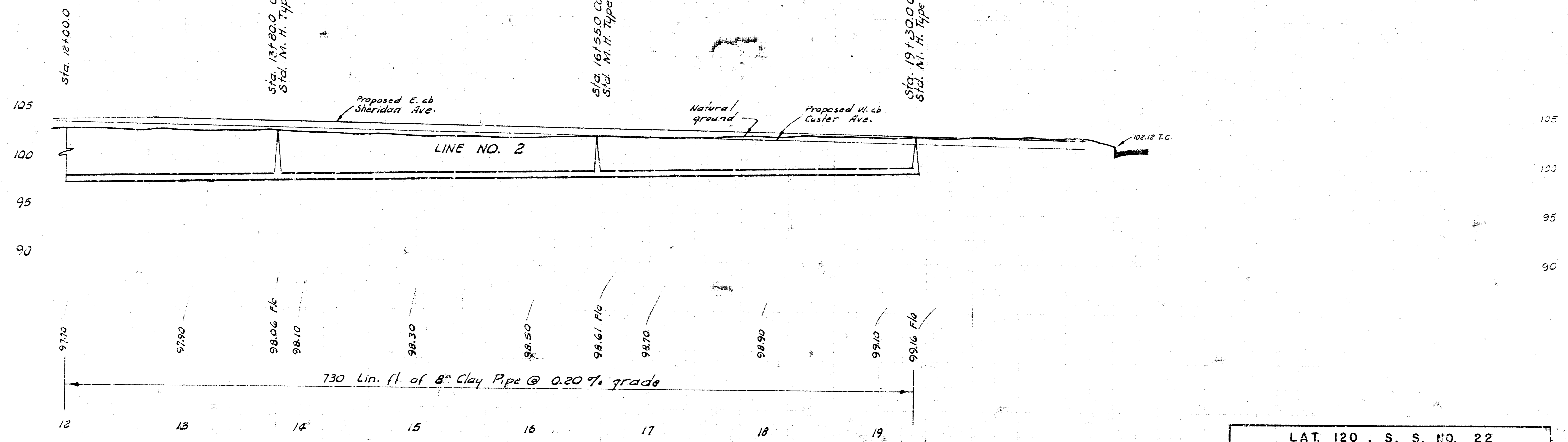
LAT. 120, S. S. NO. 22
CITY OF WICHITA, KANSAS
R. W. LINN — CITY ENGINEER
APRIL 1973 PROJECT NO. DBK L572079



LAT. 120, S. S. NO. 22
PROJECT NO. DBKL5/2079



Scale 1"=40'



LAT. 120, S. S. NO. 22
PROJECT NO. DBKL572079

14