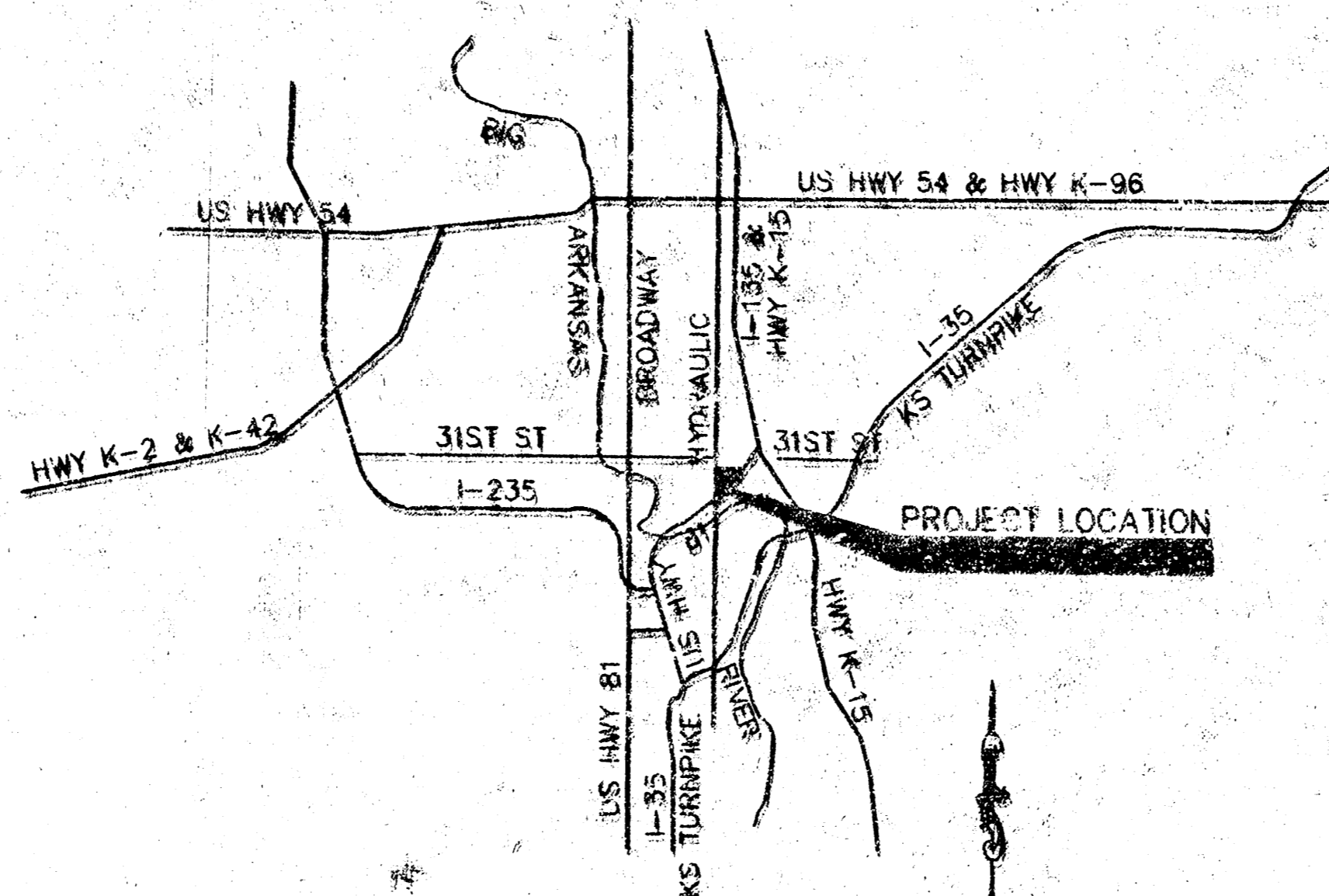


**GENERAL NOTES:**

- THE CONTRACTOR WILL BE REQUIRED TO PROVIDE A MINIMUM ADVANCE NOTICE OF TWENTY-FOUR (24) HOURS TO UTILITY COMPANIES PRIOR TO STARTING ANY EXCAVATION AS FOLLOWS:  
 KANSAS ONE-CALL 1-800-344-7233  
 THE CONTRACTOR MUST NOTIFY THE FOLLOWING IN CASE OF EMERGENCY:  
 KANSAS GAS & ELECTRIC GAS: 1-316-832-3121  
 ELECTRIC: 1-316-281-8448 (KENT MYERS)  
 SOUTHWESTERN BELL TELEPHONE COMPANY 1-316-268-2912  
 CITY OF WICHITA WATER DEPARTMENT 1-316-265-1300  
 CITY OF WICHITA SEWER MAINTENANCE 1-316-268-4071
- THE CONTRACTOR SHALL BE RESPONSIBLE FOR PRESERVING PROPERTY PINS. THE CONTRACTOR SHALL BE REQUIRED TO RE-ESTABLISH ANY PROPERTY PINS WHICH ARE DAMAGED OR DESTROYED BY HIS CONSTRUCTION OPERATIONS. SUCH PINS SHALL BE RE-ESTABLISHED BY A LICENSED LAND SURVEYOR IN ACCORDANCE WITH STATE LAWS.
- EXISTING UTILITIES AND THEIR LOCATIONS, AS SHOWN ON THE PLANS REPRESENT THE BEST INFORMATION OBTAINABLE FOR DESIGN. LOCATION INFORMATION HAS BEEN OBTAINED FROM THE VARIOUS COMPANIES AND IS EITHER FROM COMPANY UTILITY GRAPHS OR COMPANY PROVIDED FIELD LOCATIONS. THE PLAN LOCATIONS SHOWN ARE NOT GUARANTEED. ADDITIONAL EXISTING UTILITIES MAY ALSO BE ENCOUNTERED.
- RUBBLE FROM THE REMOVAL OF MISCELLANEOUS STRUCTURES AND EXCESS EXCAVATION WHICH IS TO BE WASTED SHALL BE DISPOSED OF ON SITES TO BE PROVIDED BY THE CONTRACTOR. THESE SITES SHALL BE APPROVED BY THE ENGINEER AS TO SUITABILITY, APPEARANCE AND SITE LOCATION. LOCATIONS THAT, IN THE OPINION OF THE ENGINEER, WILL LEAVE AN UNSIGHTLY APPEARANCE WILL NOT BE APPROVED. ALL DISPOSAL SITES MUST BE APPROVED BY THE KANSAS DEPARTMENT OF HEALTH AND ENVIRONMENT. MATERIAL EITHER STOCKPILED OR DISPOSED OF IN A FLOOD PLAIN WOULD REQUIRE A KANSAS STATE BOARD OF AGRICULTURE PERMIT. ANY MATERIAL DUMPED IN WATERS OF THE UNITED STATES OR WETLANDS IS SUBJECT TO U.S. CORPS OF ENGINEERS PERMITTING REGULATIONS. ANY MATERIAL BURIED OR STOCKPILED BEYOND APPROVED CONSTRUCTION LIMITS WOULD REQUIRE ADDITIONAL ARCHEOLOGICAL INVESTIGATIONS UNLESS BURIED IN A PREVIOUSLY APPROVED BORROW LOCATION.
- COST OF EXCAVATION, HAULING, AND DUMPING OF EXCESS EXCAVATION SHALL BE SUBSIDIARY TO THE PROJECT.
- A PORTION OF EXCESS EXCAVATED MATERIAL SHALL BE MOUNDING AROUND MANHOLES WHICH EXTEND MORE THAN ONE (1) FOOT ABOVE THE EXISTING GROUND. SUCH MOUNDS SHALL BE CONSTRUCTED WITH A SIX (6) FOOT DIAMETER FLAT TOP WITH 4 TO 1 SIDE SLOPES DOWN TO THE ORIGINAL GROUND. THE ELEVATION OF THE FLAT TOP OF THE MOUND SHALL BE 0.4 FOOT BELOW THE TOP OF THE MANHOLE.
- ALL STUBS AND PLUGGED PIPES SHALL BE LOCATED WITH GREEN PLASTIC TAPE IN THE SAME MANNER AS RISERS.
- BEFORE LAYING SEWER LINES USING EXISTING MAINS OR MANHOLES, THE CONTRACTOR SHALL EXPOSE AND VERIFY THE ELEVATION, GRADE AND ALIGNMENT OF EXISTING AND NOTIFY THE ENGINEER OF ANY DEVIATION FROM THE PLAN. WHERE CONNECTION TO AN EXISTING MANHOLE THAT DOES NOT HAVE AN EXISTING STUB OR THE STUB IS UNUSABLE DUE TO ELEVATION GRADE OR ALIGNMENT, THE CONTRACTOR SHALL RESHAPE THE EXISTING MANHOLE INVERT TO PROVIDE SMOOTH FLOW. THE COST OF RESHAPING EXISTING MANHOLE INVERTS IS INCIDENTAL TO THE PROJECT.
- TREES AND SHRUBS IN PUBLIC RIGHT-OF-WAY WHICH ARE IN DIRECT CONFLICT WITH PROPOSED NEW CONSTRUCTION SHALL BE REMOVED BY THE CONTRACTOR WITH THE ENGINEER'S APPROVAL. TREES AND SHRUBS WHICH ARE NOT IN DIRECT CONFLICT WITH PROPOSED NEW CONSTRUCTION SHALL BE SAVED AND PROTECTED FROM DAMAGE.
- ALL AREAS DISTURBED BY CONSTRUCTION SHALL BE GRADED BACK TO ORIGINAL GROUND LINE, SEEDED AND MULCHED.
- ALL WORK TO BE DONE IN ACCORDANCE WITH THE CITY OF WICHITA STANDARD SPECIFICATIONS AND DETAILS.

# SANITARY SEWER PLANS TO SERVE LOTS 1, 2, 3, 4 AND 5, BLOCK 1, I-135 POWER CENTER

LATERAL 155, SANITARY SEWER NO. 22  
 PROJECT NO. 468-82418  
 INDEX CODE = 742155  
 MICHAEL E. LINDEBAK, P.E. - CITY ENGINEER  
 CITY OF WICHITA  
 SEDGWICK COUNTY, KANSAS



NOT TO SCALE  
VICINITY MAP

**INDEX TO SHEETS:**

- TITLE SHEET
- SANITARY SEWER DETAILS
- FORCE MAIN - PLAN & PROFILE
- FORCE MAIN & SANITARY SEWER - PLAN & PROFILE
- SANITARY SEWER - PLAN & PROFILE
- SANITARY SEWER - PLAN & PROFILE
- FINAL PLAT

**BENCHMARKS:**

HYDRAULIC AVENUE & 31ST STREET SOUTH: CITY OF WICHITA, BENCHMARK DISC.  
 43.6' WEST OF CENTERLINE HYDRAULIC AND 32.5' NORTH OF CENTERLINE 31ST.  
 ELEV = 90.871 (C.F.W. DATUM)  
 CITY OF WICHITA DATUM = U.S.G.S. - 1187.4

**CONTACT PERSONS:**

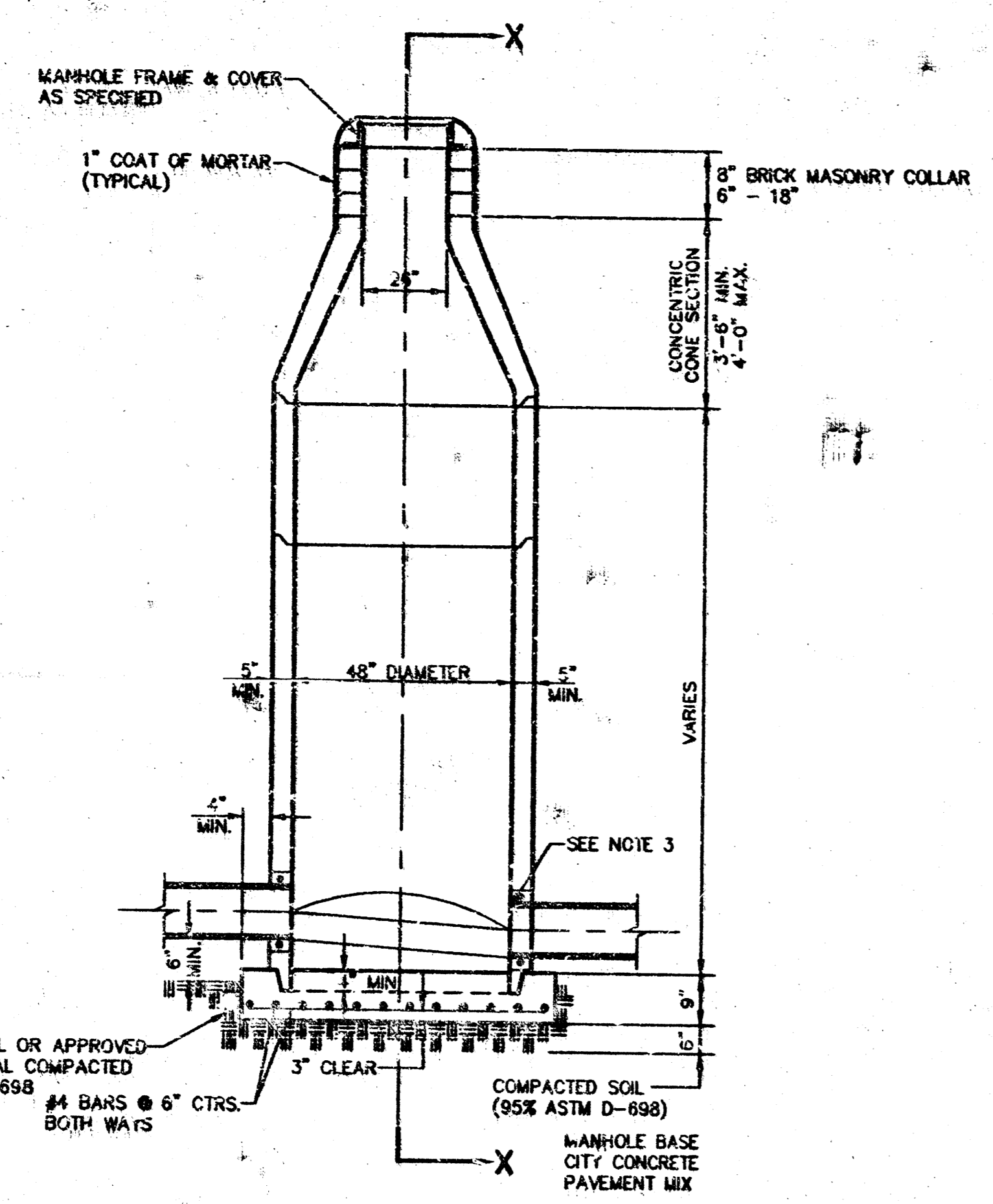
SAMUEL D. MALINOWSKY, P.E., KAW VALLEY ENGINEERING, INC. 913-762-5040  
 THOMAS W. BOYD, PRESIDENT, K.C.B.B., INC. 316-685-5341

DECEMBER, 1994

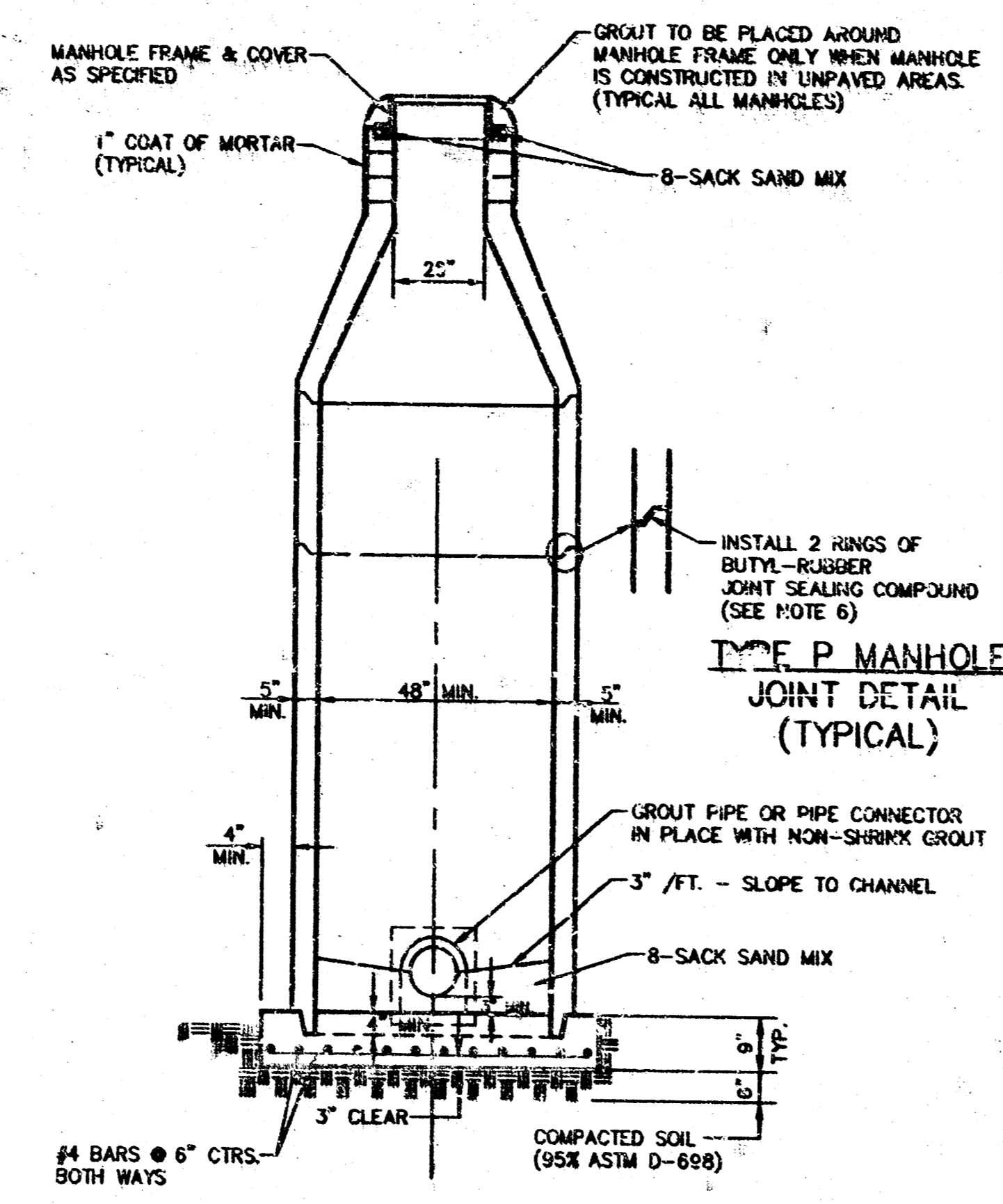
*Sam D. Malinowski*  
 11-23-94  
 SAMUEL D. MALINOWSKY  
 PROFESSIONAL ENGINEER

NO.	DATE	REVISION	BY
1	11/29/94	AS PER CITY COMMENTS	JMK
<b>TITLE SHEET - SANITARY SEWER PLANS</b>			
P.O. BOX 1304 2318 NORTH JACKSON ANDOVER CITY, KANSAS 66111 (913)762-5040 FAX 913-762-7744	<b>KAW VALLEY ENGINEERING, INC.</b>	122 N.W. PARKWAY REVERSHIDE, MISSOURI 64153 (816)587-8133 FAX 816-587-8128	PROJ. NO. 94-1598 DATE OCT. 31, 1994 DESIGNER SEM DRAWN BY GBA/ENK CHECKED BY J.S. CITY OF WICHITA SHEET 1 OF 6

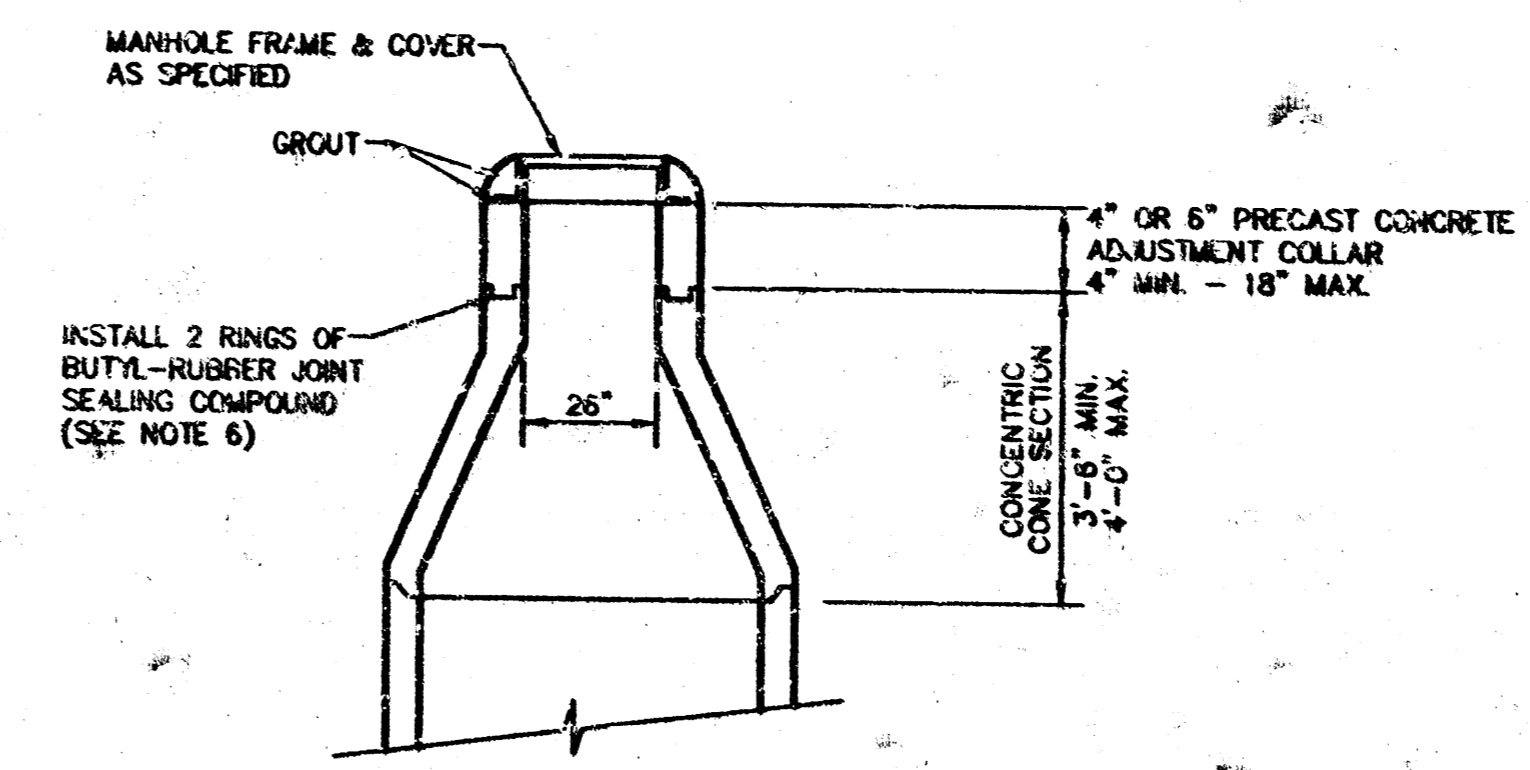
AS BUILT  
 ROL  
 9/26/95



TYPE P STANDARD MANHOLE

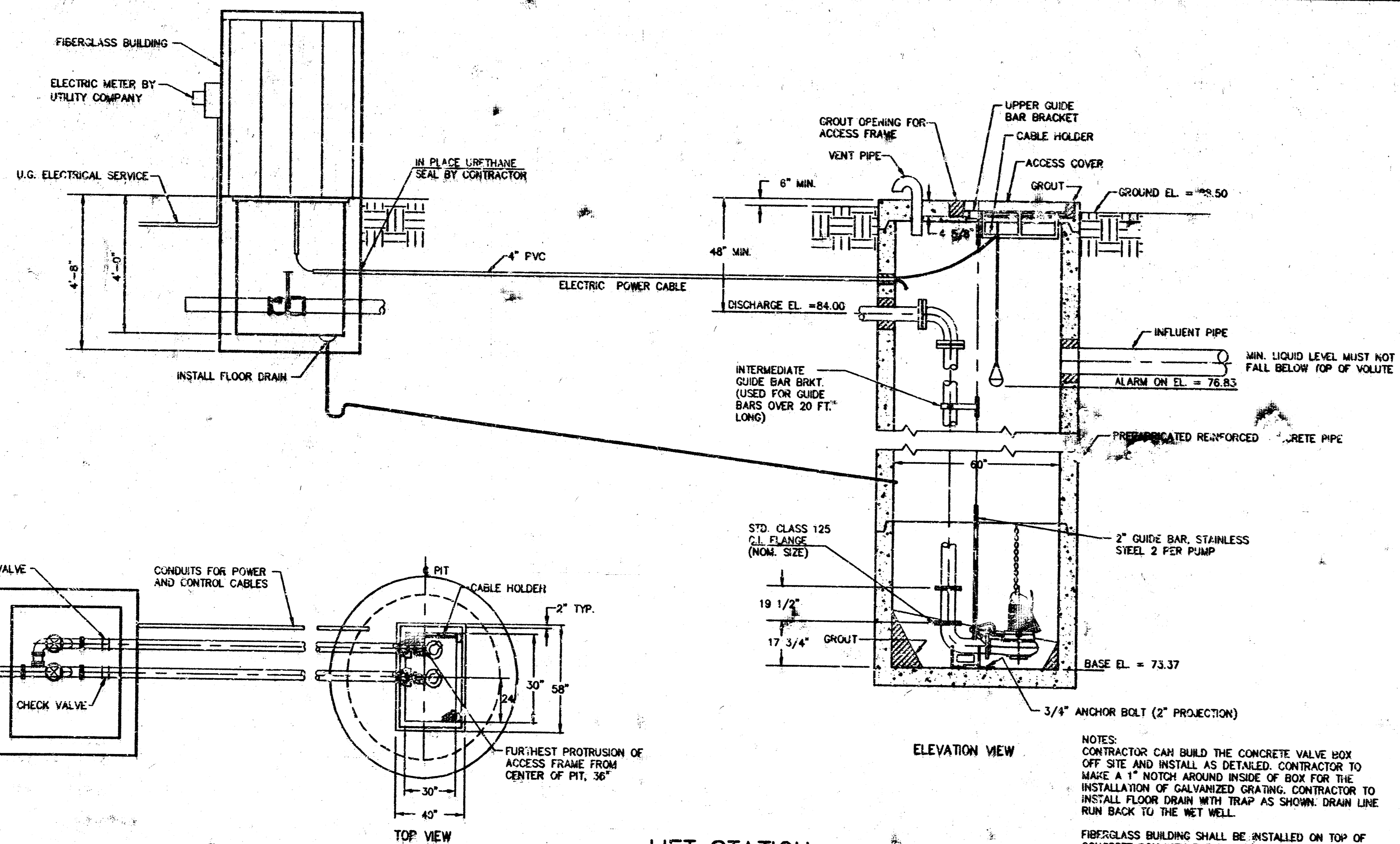


SECTION X TYPICAL



ALTERNATE CONSTRUCTION IN UNPAVED AREAS

- GENERAL NOTES  
PRECAST MANHOLE NOTES
1. ALL PRECAST CONCRETE MANHOLE SECTIONS SHALL CONFORM TO LATEST REVISION OF A.S.T.M. C478 AS MODIFIED BY THE SPECIFICATIONS.
  2. NON-SHRINK GROUT SHALL BE NON-METALLIC TYPE.
  3. APPROVED FLEXIBLE WATERSTOP GASKETS SHALL BE INSTALLED TO AIR THE SEWER TO THE MANHOLE WALL WHEN A.B.S. COMPOSITE PIPE OR P.V.C. PIPE IS USED. FOR OTHER TYPES OF PIPE THE SEWER SHALL BE GROUTED IN PLACE WITH NON-SHRINK GROUT. THE SEWER PIPE SHALL BE SUPPORTED WITH CONCRETE ENCASEMENT A MINIMUM OF 3 FEET FROM THE MANHOLE WALL AND TO THE FIRST JOINT FOR P.V.C. SUCH THAT THE JOINT REMAINS FLEXIBLE.
  4. ALL INSIDE SURFACES OF THE CONCRETE MANHOLE WHICH WOULD BE EXPOSED TO SEWER GAS SHALL BE COATED WITH 2 COATS THINCO SERIES 66 HI-BUILD EP-OXIDINE, DRY THICKNESS OF 4 MILS (MIN.).
  5. EXTERIOR MANHOLE WALL SHALL BE COATED WITH 1 COAT MOBEKOR 633 BITUMINOUS COATING.
  6. JOINT SEALING COMPOUND SHALL BE KENT SEAL NO. 4 OR APPROVED EQUAL.
  7. PRECAST MANHOLES SHALL BE SET AT LEAST 4 INCHES INTO THE MANHOLE BASE.
  8. TOP OF MANHOLE FLOOR SLAB SHALL BE AT LEAST 3 INCHES BELOW THE FLOW LINE OF THE OUTLET PIPE TO INSURE SUFFICIENT MINIMUM THICKNESS OF SLAB TO INVERT.
  9. LIFTING HOLES SHALL BE FILLED WITH NON-SHRINK GROUT AND THE SURFACE COATED AS SPECIFIED.
  10. MORTAR USED IN MASONRY CONSTRUCTION SHALL CONTAIN 8 BAGS OF CEMENT PER CUBIC YARD. CONCRETE USED IN MANHOLE BASES SHALL CONFORM TO THE REQUIREMENTS OF CONCRETE FOR CONCRETE PAVEMENT CONSTRUCTION AS SPECIFIED IN THE CITY STANDARD PAVING SPECIFICATIONS USING CITY CONCRETE PAVEMENT MIX WITHOUT AIR ENTRAINING ADMIXTURE. MORTAR SHALL BE PLACED AROUND THE MANHOLE RING AS SHOWN ON THE DRAWINGS WHEN MANHOLES ARE CONSTRUCTED IN UNPAVED AREAS. MANHOLES CONSTRUCTED UNDER PAVEMENT ARE SPACED AT LEAST 30 FEET ON CENTER. ALL HAVE AN INSIDE DIAMETER OF 4 FEET. MANHOLES CONSTRUCTED UNDER PAVEMENT ARE SPACED AT LEAST 30 FEET ON CENTER. ALL HAVE AN INSIDE DIAMETER OF 5 FEET. COMPLETED MANHOLE SHALL BE WITHOUT LEAKS AND WATER TIGHT.
  11. REINFORCING STEEL SHALL BE INSTALLED IN THE MANHOLE BASES AND SHALL CONSIST OF NO. 4 BARS PLACED ON 6 INCH CENTERS IN BOTH DIRECTIONS. THE MANHOLE BASE REINFORCEMENT SHALL BE PLACED AT LEAST 3 INCHES ABOVE THE BOTTOM OF THE MANHOLE BASE.
  12. OPENINGS SHALL BE CUT INTO THE MANHOLE WALL WHEN OUTSIDE DIPS ARE CONSTRUCTED ON EXISTING MANHOLES. SUCH OPENINGS CUT INTO EXISTING MANHOLES SHALL BE AS SMALL AS PRACTICAL TO FACILITATE INSTALLING AND GROUTING THE NEW PIPE IN PLACE. WATERSTOP GASKETS SHALL BE USED WITH P.V.C. AND A.B.S. COMPOSITE PIPE. THE NEW PIPE SHALL BE GROUTED INTO THE OPENING USING AN APPROVED NON-SHRINK GROUT FOR THE FULL MANHOLE WALL THICKNESS. THE EXTERIOR OF THE COMPLETED CONNECTION SHALL BE SEALED WITH AN APPROVED BITUMINOUS COATING SUCH THAT THE CONNECTION WILL BE WATER TIGHT. FLOOR OF MANHOLE SHALL BE MOVED TO FORM NEW FLOW CHANNEL FOR THE NEW CONNECTION AS INDICATED BY THE DRAWING.
  13. THE FLOORS OF ALL MANHOLES SHALL BE SHAPED WITH FLOW CHANNELS SUCH THAT THE MANHOLES WILL BE SELF-CLEANING AND FREE OF AREAS WHERE SOLIDS COULD BE DEPOSITED AS SEWER FLOWS THROUGH THE MANHOLE FROM ALL INLET PIPES TO THE OUTLET PIPE. FLOW CHANNELS SHALL BE FORMED TO MATCH THE BOTTOM HALVES OF THE INFLOWING PIPES AND THE OUTFLOWING PIPE AS SHOWN BY THE DRAWINGS EXCEPT FOR INSIDE DROP MANHOLES. FLOW CHANNELS FOR INSIDE DROP MANHOLES SHALL BE CONSTRUCTED AS INDICATED BY THE DRAWING. MANHOLE FLOORS SHALL HAVE SLOPES LAID THROUGH MANHOLES SHALL HAVE THE TOP HALF REMOVED TO REVEAL THE FULL INSIDE DIAMETER OF THE MANHOLE. MANHOLE FLOORS SHALL THEN BE SHAPED AROUND THE BOTTOM HALF OF THE PIPE WHICH FORMS THE FLOW CHANNEL.
  14. PIPES INSTALLED WITHIN THE EXCAVATION MADE FOR THE MANHOLE SHALL BE CRADLED WITH CONCRETE TO THE LIMITS OF THE MANHOLE EXCAVATION. WHEN CLAY PIPE IS USED, THE CRADLE SHALL EXTEND TO THE FIRST JOINT OUTSIDE THE MANHOLE. THE CRADLE SHALL BE TERMINATED AT THE CLAY PIPE JOINT IN A MANNER WHICH WILL MAINTAIN THE FLEXIBILITY OF THE JOINT.
  15. MANHOLE COVER CASTINGS AND MANHOLE FRAME CASTINGS SHALL CONFORM TO THE REQUIREMENTS AS INDICATED IN THE STANDARD SPECIFICATIONS AND AS SHOWN IN THE STANDARD DETAIL DRAWING.
  16. THE VERTICAL FREE FALL DROP INSIDE MANHOLES SHALL NOT EXCEED 2 FEET. THE CROWNS OF INFLOWING PIPES SHALL NEVER BE SET LOWER THAN THE CROWN OF THE OUTFLOWING PIPE.
  17. A BRICK MASONRY COLLAR SHALL BE INSTALLED BETWEEN THE CAST IRON FRAME AND THE CONCENTRIC CONE. THE COLLAR WILL HAVE 8 INCH WALLS AND A VERTICAL HEIGHT OF 8 INCHES MINIMUM AND 18 INCHES MAXIMUM. A 1 INCH COAT OF MORTAR WILL BE PLASTERED ON THE OUTSIDE OF THE COLLAR.
  18. MANHOLE RIMS NOT IN PAVED AREAS ARE TO BE 0.4' ABOVE FINISHED GROUND.



LIFT STATION 525

SUBMERSIBLE WASTEWATER PUMP

REQUIREMENTS  
FURNISH AND INSTALL 2 SUBMERSIBLE NON-CLOG WASTEWATER PUMPS. THE PUMPS SHALL BE EQUIPPED WITH A SUBMERSIBLE ELECTRIC MOTOR CONNECTED FOR OPERATION ON 480 VOLTS WITH 15 FEET OF SUBMERSIBLE CABLE SUITABLE FOR SUBMERSIBLE PUMP APPLICATIONS. THE POWER CABLE SHALL BE SIZED ACCORDING TO NEC AND IEC STANDARDS. THE PUMPS SHALL BE SUPPLIED WITH A MATING CAST IRON 4 INCH DISCHARGE CONNECTION AND BE CAPABLE OF DELIVERING 200 GPM AT 14' TDH. THE PUMPS SHALL BE 2HP FLYGT OF 3085-438 OR EQUAL. ALTERNATE PUMP MANUFACTURERS MAY BE USED UPON SUBMITTAL AND APPROVAL OF MANUFACTURERS SPECIFICATIONS.

CONTRACTORS TO REFER TO PROJECT SPECIFICATIONS FOR PUMP AND GENERATOR REQUIREMENTS.

NOTES  
CONTRACTOR CAN BUILD THE CONCRETE VALVE BOX OFF SITE AND INSTALL AS DETAILED. CONTRACTOR TO MAKE A 1" NOTCH AROUND INSIDE OF BOX FOR THE INSTALLATION OF GALVANIZED GRATING. CONTRACTOR TO INSTALL FLOOR DRAIN WITH TRAP AS SHOWN. DRAIN LINE RUN BACK TO THE WET WELL.

FIBERGLASS BUILDING SHALL BE INSTALLED ON TOP OF CONCRETE BOX WITH THE ENTRY DOOR LOCATED TOWARDS THE WET WELL. THE PUMP CONTROL PANEL SHALL BE MOUNTED ON THE INSIDE OF THE BUILDING ALONG WITH ANY OTHER ALARM EQUIPMENT.

PIPING SHALL BE CONNECTED AS REQUIRED TO THE PUMP DISCHARGE LINES AND FORCE MAIN.

NO.	DATE	AS PER CITY COMMENTS	BY
1	11/29/84		JDK
SANITARY SEWER DETAILS			
P.O. BOX 1304 2319 NORTH JACKSON JUNCTION CITY, KANSAS 66441 (913) 762-2040 FAX 913-762-7744		122 N.W. PARKWAY RIVERSIDE, MISSOURI 64115 (816) 277-2032 FAX 816-267-0129	
RAW VALLEY ENGINEERING, INC.		DESIGNER SDM DRAWN BY DBA/JDK CHECKED BY LDO DATE OCT. 31, 1984	
		PROJECT NO. 91-158B SHEET 2 OF 8	

LOT 1  
SANTA FE MIDLAND INDUSTRIAL DISTRICT  
2ND ADDITION

CAUTION - NOTICE TO CONTRACTOR  
THE CONTRACTOR IS SPECIFICALLY CAUTIONED THAT THE LOCATION AND/OR  
ELEVATION OF EXISTING UTILITIES AS SHOWN ON THESE PLANS IS BASED ON  
RECORDS OF THE VARIOUS UTILITY COMPANIES AND, WHERE POSSIBLE,  
MEASUREMENTS TAKEN IN THE FIELD. THE INFORMATION IS NOT TO BE RELIED  
ON AS BEING EXACT OR COMPLETE. THE CONTRACTOR MUST CALL THE  
APPROPRIATE UTILITY COMPANIES AT LEAST 48 HOURS BEFORE ANY EXCAVATION  
TO REQUEST EXACT FIELD LOCATION OF UTILITIES. IT SHALL BE THE  
RESPONSIBILITY OF THE CONTRACTOR TO RELOCATE ALL EXISTING UTILITIES  
WHICH CONFLICT WITH PROPOSED IMPROVEMENTS SHOWN ON THE PLANS.  
THE CONTRACTOR SHALL EXPOSE EXISTING UTILITIES AT LOCATIONS OF POSSIBLE  
CONFLICTS PRIOR TO ANY CONSTRUCTION OF NEW UTILITIES.

SCALE:  
PLAN: 1" = 20'  
PROFILE: 1" = 5' VERT

NOTE: LIMITS OF PAVEMENT REMOVAL SHOWN ON  
TULSA STREET ARE APPROXIMATE. CONTRACTOR TO ONLY  
REMOVE THE MINIMAL PAVEMENT NECESSARY TO  
FACILITATE THE CONSTRUCTION OF THE MANHOLE AND  
FORCE MAIN. FLOWLINES SHOWN OF MANHOLES ON TULSA  
STREET ARE TAKEN FROM C.O.W. SEWER MAPS. NOT  
VERIFIED IN THE FIELD. CONTRACTOR TO COORDINATE  
WITH THE CITY OF WICHITA IN REGARDS TO CONSTRUCTION  
SEQUENCING AND TRAFFIC CONTROL.

STA. 10+14.03 CONST. STD. M.H.  
TYPE P-PLASTIC LINED (D=6")  
RIM ELEV. = 92.0  
APPROX. FL (IN) = 78.82

INSTALL 995.97 LF 4" PVC FORCE MAIN

APPROXIMATE LIMITS OF  
SAWCUT AND PAVEMENT  
REMOVAL

SAWCUT AND REMOVE EXISTING PAVEMENT.  
CONNECT 4" FORCE MAIN TO PROPOSED MANHOLE.  
REPLACE PAVEMENT, CURB AND GUTTER.  
PAVEMENT REMOVAL AND REPLACEMENT TO BE  
DONE IN ACCORDANCE WITH CITY-OF WICHITA  
S.E.P. NO. 103.9.

HYDRAULIC AVENUE

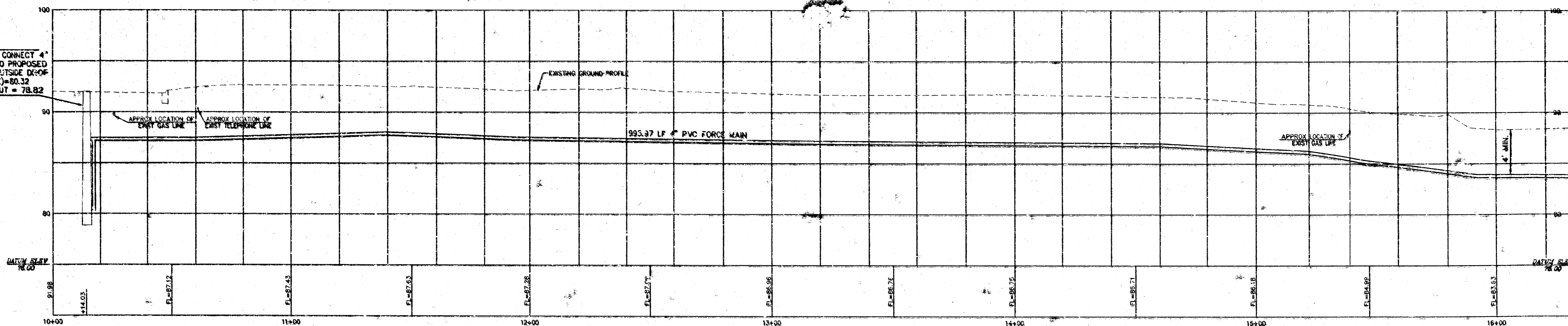
SANITARY SEWER MANHOLE  
MANHOLE LID RUSTED SHUT  
UNABLE TO VERIFY FL  
DEPTH TAKEN FROM CITY MAPS  
RIM ELEV=91.99  
APPROX FL=78.84

NW CORNER SECTION 10,  
T-28-S, R-1-E  
1/2" I.D. PIPE INSIDE  
3" DIA. CYLINDER

BENCHMARK

31ST ST 60' R/W

STA 10+14.03 CONNECT 4"  
FORCE MAIN TO PROPOSED  
MANHOLE W/OUTSIDE DK-OF  
PROP FL IN(S)=80.32  
APPROX. FL OUT = 78.82



HYDRAULIC AVENUE @ 31ST STREET SOUTH: CITY OF WICHITA, BENCHMARK DISC.  
43.6' WEST OF CENTERLINE HYDRAULIC AND 32.5' NORTH OF CENTERLINE 31ST  
JUNCTION CITY, KANSAS 67441 90.871(C.O.W. DATUM)

CITY OF WICHITA DATUM = U.S.G.S.-1187.4

NO.		DATE	AS PER CITY COMMENTS	REVISION	BY
1		11/22/94			JK

**FORCE MAIN - PLAN & PROFILE**

P.O. BOX 1304 2319 NORTH JACKSON JUNCTION CITY, KANSAS (913)782-5040 FAX 913-762-7744	<b>KAW VALLEY</b> ENGINEERING, INC.	122 N.W. PARKWAY REVERSHADE, MISSOURI 64150 (816)887-5033 FAX 816-887-0128	PROJ. NO. 94-1738 DATE OCT. 31, 1994 DESIGNER SDM DRAWN BY ORAZER CHECKED BY LDD 159824X SHEET 3 OF 6
---	--	--	---

SCALE:  
 PLAN: 1" = 20'  
 PROFILE: 1" = 20' HORIZ  
 1" = 5' VERT

LOT 1  
 BLOCK 1, I-135 POWER CENTER

NOTE:  
 CONTRACTOR RESPONSIBLE FOR ALL  
 CONTROLS AND SWITCHING EQUIPMENT  
 NECESSARY FOR THE CONNECTION OF  
 THE AUXILIARY GENERATOR TO THE LIFT  
 STATION AND AUTOMATIC ACTIVATION OF  
 THE GENERATOR IN THE EVENT OF A  
 PRIMARY POWER FAILURE.

NOTE:  
 CONTRACTOR SHALL CONTACT LARRY KOONITZ WITH  
 THE CITY OF WICHITA WATER DEPARTMENT AT  
 316-529-8901 FOR A LIST OF ACCEPTABLE  
 TELEMETRY EQUIPMENT.

20' UTILITY EASEMENT

INSTALL 8" SERVICE LINE  
 STUB W/ PLUG.

20+23.0  
 STA 20+00.00 CONST LIFT STATION,  
 WET WELL W/ 100 GPM DUPLEX PUMPS.  
 SEE DETAIL SHEET 2

INSTALL 1000 LF 4" PVC FORCE MAIN

AUXILIARY GENERATOR

GAS SERVICE FOR AUXILIARY GENERATOR

CONDUIT FOR ELECTRIC SERVICE

CONTROL HOUSE FOR LIFT STATION.  
 SEE DETAIL SHEET 2.  
 20+03

CONTRACTOR TO COORDINATE WITH KANSAS GAS AND ELECTRIC FOR  
 EXACT SIZE AND LOCATION OF GAS LINE AND CONDUIT FOR ELECTRICAL  
 SERVICE. THE CONTRACTOR IS RESPONSIBLE FOR ALL COSTS  
 ASSOCIATED WITH PROVIDING ELECTRIC SERVICE TO  
 THE LIFT STATION AND GAS SERVICE TO THE AUXILIARY GENERATOR.

HYDRAULIC AVENUE

TELE VAULT

HYDRAULIC B  
 BINKLEY

BLOCK 16

BERKLEY AVE  
 60' R/W

LOT 9

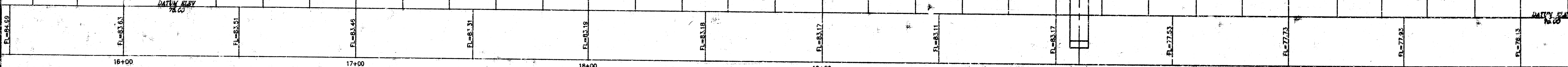
RAINBOW FIRST ADDITION  
 BLOCK 17

STA 20+10.00 CONST WET WELL  
 FOR LIFT STATION.  
 TOP ELEV=88.50  
 FL IN(S)=77.37  
 FL IN(NE)=78.00  
 BOTTOM ELEV=73.37

EXISTING GROUND PROFILE

1000 LF 4" PVC FORCE MAIN

DATUM BARY  
 78.00



HYDRAULIC AVENUE & 31ST STREET SOUTH: CITY OF WICHITA, BENCHMARK DISC.  
 43.8' WEST OF CENTERLINE HYDRAULIC AND 32.5' NORTH OF CENTERLINE 31ST.  
 ELEV = 90.871(C.D.W. DATUM)  
 CITY OF WICHITA DATUM = U.S.G.S.-1187.4

NO.	DATE	REVISION	BY

AS PER CITY COMMENTS

**FORCE MAIN & SANITARY SEWER  
 PLAN & PROFILE**

P.O. BOX 1364  
 2318 NORTH JEFFERSON  
 WICHITA, KANSAS 67201  
 (316) 262-2000  
 FAX 316-262-7744

**KAW VALLEY  
 ENGINEERING, INC.**

122 N.W. PARKWAY  
 WICHITA, KANSAS 67202  
 (316) 262-2000  
 FAX 316-262-7744

PROJ. NO. 98-1588  
 DATE 02/20/98  
 DESIGNER  
 CHECKED BY  
 DRAWN BY  
 SHEET 4 OF 8

SCALE:  
PLAN 1" = 20'  
PROFILE 1" = 5' VERT

LOT 2

BLOCK 1, 1-135 POWER CENTER

LOT 3

24+23.0  
STA 20+40.00 CONST  
STANDARD MANHOLE  
TYPE P  
RIM ELEV=88.00  
FL IN(S)=78.97  
FL IN(E)=78.77  
FL OUT (N)=78.97

INSTALL 6" SERVICE LINE  
STUB W/ PLUG

20' UTILITY EASEMENT

INSTALL 6" SERVICE LINE  
STUB W/ PLUG

102.53  
STA 28+45.22 CONST  
STANDARD MANHOLE  
TYPE P  
RIM ELEV=85.50  
FL IN(S)=81.75  
FL IN(E)=81.45  
FL OUT (N)=81.75

HYDRAULIC AVENUE WEST LINE SECTION 10-28-1

RAINBOW FIRST ADDITION  
BLOCK 17

LOT 10

CATALINA AVE  
60' R/W

LOT 9

BLOCK 18

LOT 10

DEL MAR AVE  
60' R/W

LOT 9

BLOCK 19

LOT 10

2'x5' CURB INLET  
BRICK - GOOD CONDITION  
T/C @ INLET=88.38

2'x5' CURB INLET  
BRICK - GOOD CONDITION  
T/C @ INLET=88.22

STORM SEWER MANHOLE  
RIM ELEV=83.18  
T/C @ INLET=84.63  
FL IN(S)=84.63  
FL OUT(S)=84.63

2'x5' CURB INLET  
BRICK - GOOD CONDITION  
T/C @ INLET=88.20

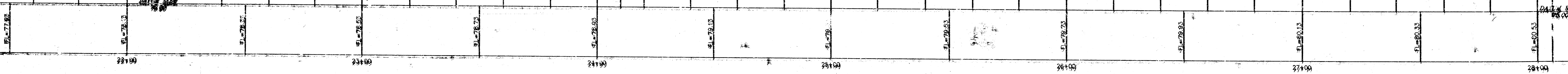
24+23.0  
STA 21+14.00 CONST  
STANDARD MANHOLE  
TYPE P  
RIM ELEV=88.40  
FL IN(S)=78.97  
FL IN(E)=78.77  
FL OUT (N)=78.97

EXISTING GROUND PROFILE

28+45.22  
STA 28+45.22 CONST  
STANDARD MANHOLE  
TYPE P  
RIM ELEV=85.90  
FL IN(S)=80.75  
FL IN(E)=81.45  
FL OUT (S)=80.65

400.00 LT 8" PIPE @ 0.40%

395.82 LF 8" PIPE @ 0.40%



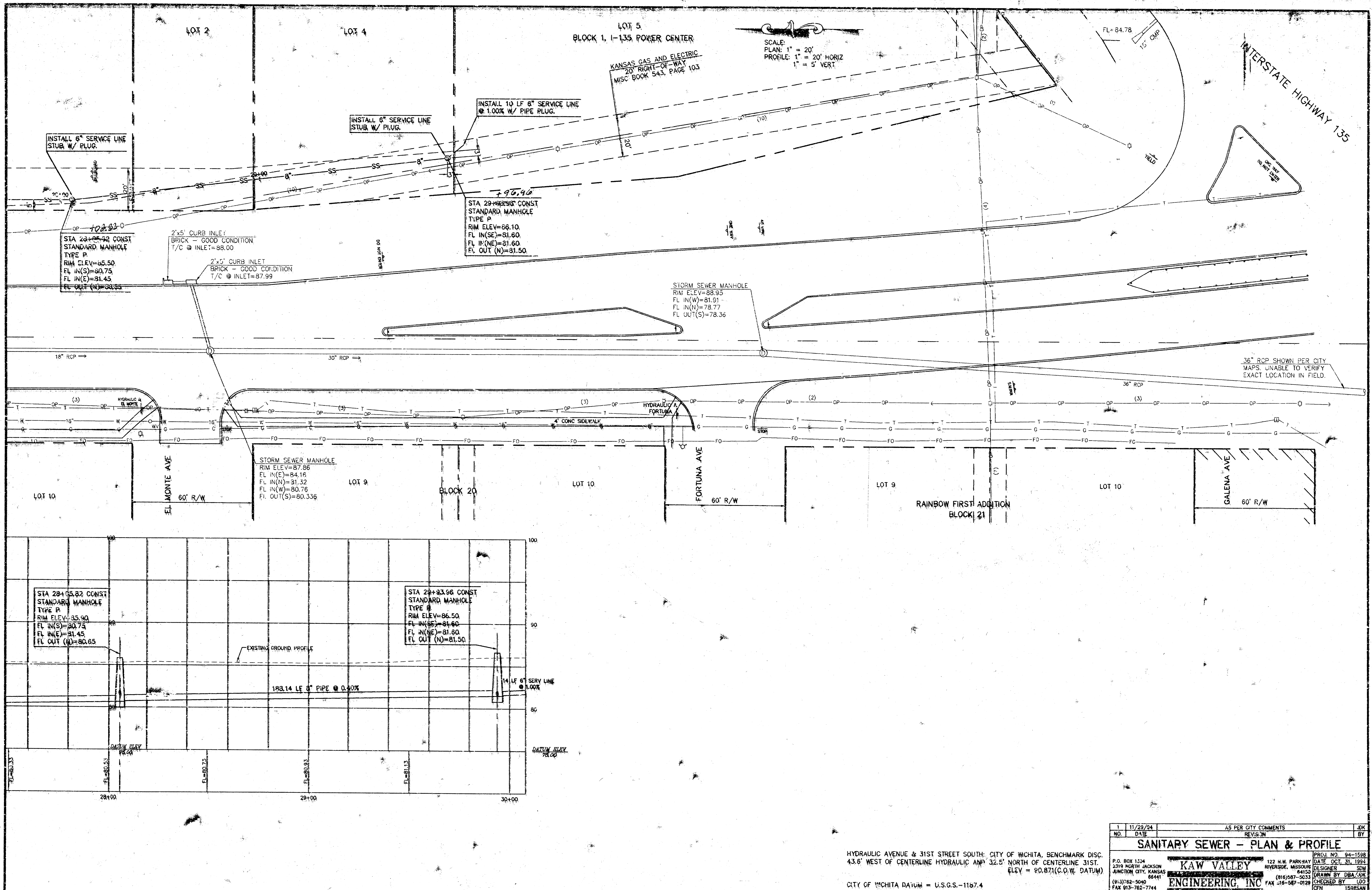
HYDRAULIC AVENUE & 31ST STREET SOUTH CITY OF WICHITA, BENCHMARK DISC.  
43.8' WEST OF CENTERLINE HYDRAULIC AND 32.5' NORTH OF CENTERLINE 31ST.  
ELEV = 89.871(C.O.M. DATUM)  
CITY OF WICHITA DATUM = U.S.G.S.-11874

NO.	DATE	AS PER CITY COMMENTS	BY
1	11/22/14		BT

**SANITARY SEWER - PLAN & PROFILE**

PROJ. NO. 14-1593	DATE OCT 31, 2014
P.O. BOX 1304 2310 NORTH JACKSON WICHITA, KS 67201	DESIGNED BY JIM
<b>RAW VALLEY</b>	DRAWN BY T.S.A./L.S.
<b>ENGINEERING, INC.</b>	CHECKED BY L.D.O.
(913) 262-5040 FAX 913-762-7744	DATE 10/28/14

SHEET 3 OF 3



SCALE:  
 PLAN: 1" = 20'  
 PROFILE: 1" = 20' HORIZ  
 1" = 5' VERT

INTERSTATE HIGHWAY 135

LOT 5  
 BLOCK 1, I-135 POWER CENTER

KANSAS GAS AND ELECTRIC  
 20' RIGHT-OF-WAY  
 MISC BOOK 543, PAGE 103

INSTALL 8" SERVICE LINE  
 STUB W/ PLUG

INSTALL 8" SERVICE LINE  
 STUB W/ PLUG

INSTALL 14 LF 8" SERVICE LINE  
 @ 1.00% W/ PIPE PLUG

STA 28+05.82 CONST  
 STANDARD MANHOLE  
 TYPE P  
 RIM ELEV=85.50  
 FL IN(S)=80.75  
 FL IN(E)=81.45  
 FL OUT(N)=80.35

2"x5" CURB INLET  
 BRICK - GOOD CONDITION  
 T/C @ INLET=88.00

2"x5" CURB INLET  
 BRICK - GOOD CONDITION  
 T/C @ INLET=87.99

STA 29+93.96  
 STA 29+93.96 CONST  
 STANDARD MANHOLE  
 TYPE P  
 RIM ELEV=86.10  
 FL IN(SE)=81.60  
 FL IN(NE)=81.60  
 FL OUT(N)=81.50

STORM SEWER MANHOLE  
 RIM ELEV=88.95  
 FL IN(W)=81.81  
 FL IN(N)=78.77  
 FL OUT(S)=78.36

STORM SEWER MANHOLE  
 RIM ELEV=87.86  
 FL IN(S)=84.16  
 FL IN(W)=80.76  
 FL OUT(S)=80.356

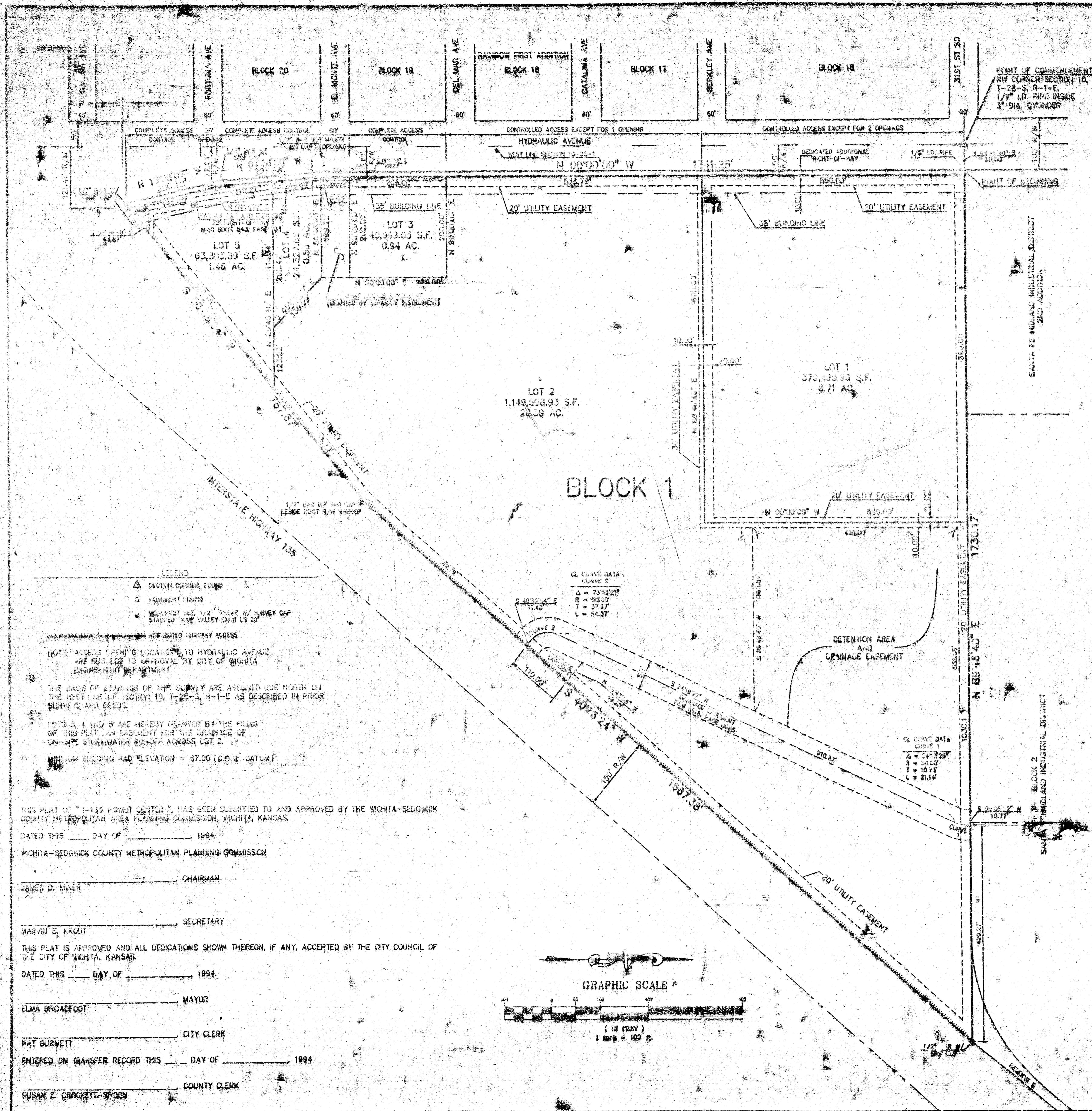
STA 28+05.82 CONST  
 STANDARD MANHOLE  
 TYPE P  
 RIM ELEV=85.90  
 FL IN(S)=80.75  
 FL IN(E)=81.45  
 FL OUT(N)=80.65

STA 29+93.96 CONST  
 STANDARD MANHOLE  
 TYPE P  
 RIM ELEV=86.50  
 FL IN(SE)=81.60  
 FL IN(NE)=81.60  
 FL OUT(N)=81.50

1	11/29/94	AS PER CITY COMMENTS	JDK
NO.	DATE	REVISION	BY
<b>SANITARY SEWER - PLAN &amp; PROFILE</b>			
P.O. BOX 1134 2319 NORTH JACKSON JUNCTION CITY, KANSAS 66441 (913)782-5040 FAX 913-782-7744	<b>KAW VALLEY</b> ENGINEERING, INC	122 N.W. PARKWAY RIVERDALE, MISSOURI 64150 (816)887-5633 FAX 316-887-0128	PROJ. NO. 94-1588 DATE OCT. 31, 1994 DESIGNER SDW DRAWN BY DBA/CSE CHECKED BY LOO CFM 1588SAN SHEET 6 OF 6

HYDRAULIC AVENUE & 31ST STREET SOUTH: CITY OF WICHITA, BENCHMARK DISC.  
 43.6' WEST OF CENTERLINE HYDRAULIC ANV 32.5' NORTH OF CENTERLINE 31ST.  
 ELEV = 90.87(C.O.W. DATUM)

CITY OF WICHITA DATUM = U.S.G.S.-1167.4



I, JOHN L. SHEETS, A CIVIL ENGINEER AND REGISTERED LAND SURVEYOR IN THE STATE OF KANSAS, DO HEREBY CERTIFY THAT I HAVE BEEN IN RESPONSIBLE CHARGE OF SURVEYING AND PLATTING THE I-135 POWER CENTER, AN ADDITION TO THE CITY OF WICHITA, SEDGWICK COUNTY, KANSAS, INTO LOTS AND BLOCK, THE SAME BEING ACCURATELY SET FORTH IN THE ACCOMPANYING PLAT AND DESCRIBED HEREIN.

A TRACT OF LAND LOCATED IN A PART OF GOVERNMENT LOTS 2 AND 3, SECTION 10, TOWNSHIP 28 SOUTH, RANGE 1 EAST OF THE 6TH PRINCIPAL MERIDIAN IN SEDGWICK COUNTY, KANSAS, AND DESCRIBED AS FOLLOWS: COMMENCING AT THE NORTHWEST CORNER OF SAID SECTION 10; THENCE N 89°46'40" E ON THE NORTH LINE OF SAID SECTION TO A DISTANCE OF 560.00 FEET TO A POINT ON THE EAST RIGHT-OF-WAY LINE OF HYDRAULIC AVENUE; SAID POINT ALSO BEING THE SOUTHWEST CORNER OF SANTA FE MIDLAND INDUSTRIAL DISTRICT; AND ADDITION TO WICHITA, KANSAS; AND BEING THE POINT OF BEGINNING OF THE TRACT TO BE DESCRIBED; THENCE N 89°46'40" E ON THE NORTH LINE OF SAID SECTION TO A DISTANCE OF 1730.17 FEET TO THE SOUTHWEST CORNER OF RESERVE D, BLOCK 2, SANTA FE MIDLAND INDUSTRIAL DISTRICT, ACCORDING TO WICHITA, KANSAS; SAID POINT ALSO BEING ON THE NORTHERLY RIGHT-OF-WAY LINE OF INTERSTATE HIGHWAY 135; THENCE S 40°16'24" W ON SAID NORTHERLY RIGHT-OF-WAY LINE, A DISTANCE OF 1997.00 FEET TO THE POINT OF BEGINNING; CONTAINS 3.47 ACRES, MORE OR LESS.

THENCE N 89°46'40" E ON THE NORTH LINE OF SAID SECTION TO A DISTANCE OF 1730.17 FEET TO THE POINT OF INTERSECTION OF SAID NORTHERLY RIGHT-OF-WAY LINE OF INTERSTATE HIGHWAY 135 WITH THE EAST RIGHT-OF-WAY LINE OF HYDRAULIC AVENUE; THENCE N 13°30'07" W ON SAID EAST RIGHT-OF-WAY LINE, A DISTANCE OF 200.18 FEET; THENCE CONTINUING ON SAID EAST RIGHT-OF-WAY LINE, N 04°23'50" W A DISTANCE OF 221.64 FEET; THENCE CONTINUING ON SAID EAST RIGHT-OF-WAY LINE, N 05°00'00" E A DISTANCE OF 1341.20 FEET TO THE POINT OF BEGINNING. CONTAINS 3.47 ACRES, MORE OR LESS.

SAID DESCRIBED TRACT ALSO BEING THE SAME AS DESCRIBED ON FILM 1397, PAGE 1507 IN THE OFFICE OF THE REGISTER OF DEEDS, SEDGWICK COUNTY, KANSAS.

I HEREBY CERTIFY THAT THE DETAILS OF THIS PLAT ARE CORRECT TO THE BEST OF MY KNOWLEDGE AND BELIEF THIS DAY OF 1994.

JOHN L. SHEETS, P.E., R.L.S., NO. 563  
KAW VALLEY ENGINEERING, INC.  
P.O. BOX 1304, 2013 NORTH JACKSON  
WICHITA, KANSAS 67201

KNOW ALL MEN BY THESE PRESENTS THAT THE UNDERSIGNED PROPERTY OWNER OF THE LAND AS ABOVE SET FORTH IN THE CIVIL ENGINEER'S AND REGISTERED LAND SURVEYOR'S CERTIFICATE, HAVE CAUSED THE SAME TO BE SURVEYED AND PLATTED INTO LOTS, A BLOCK AND STREET, THE SAME TO BE KNOWN AS "I-135 POWER CENTER", AN ADDITION TO THE CITY OF WICHITA, SEDGWICK COUNTY, KANSAS. THE STREET IS DESIGNATED TO AID FOR THE USE OF THE PUBLIC. EASEMENTS FOR THE CONSTRUCTION AND MAINTENANCE OF PUBLIC UTILITIES AND CURBS ARE HEREBY GRANTED TO THE CITY. ALL ADJUTERS RIGHT TO ACCESS TO OR FROM HYDRAULIC AVENUE OVER AND ABOVE THE WEST LINE OF I-135 POWER CENTER, ARE HEREBY GRANTED TO THE CITY OF WICHITA, PROVIDED HOWEVER THAT LOT 1 SHALL HAVE 2 OPENINGS AS INDICATED ON THE FACE OF THE PLAT, LOT 2 SHALL HAVE 2 OPENINGS AS INDICATED ON THE FACE OF THE PLAT, AND LOT 3 SHALL HAVE 1 OPENING AS INDICATED ON THE FACE OF THE PLAT. A CROSS LOT JOINT ACCESS AGREEMENT FOR LOTS 2, 3 AND 4 IS GRANTED ON FILM 1397, PAGE 1507.

THOMAS W. GOYO, PRESIDENT  
STATE OF KANSAS }  
SEDGWICK COUNTY }

BE IT REMEMBERED THAT ON THIS DAY OF 1994, BEFORE ME THE UNDERSIGNED, A NOTARY PUBLIC IN AND FOR THE COUNTY AND STATE AFORESAID, THOMAS W. GOYO, PRESIDENT OF K.C.B.S., INC., TO ME PERSONALLY KNOWN TO BE THE SAME PERSON WHO FOLLOWED THE FOREGOING INSTRUMENT, HE HEARD AND ONLY ACKNOWLEDGED THE EXECUTION OF THE SAME.

MY WITNESS HEREOF, I HAVE HEREUNTO SET MY HAND AND AFFIXED MY OFFICIAL SEAL, THE DAY AND YEAR LAST ABOVE WRITTEN.

TERESA J. ROUSHKOLE, NOTARY PUBLIC  
MY COMMISSION EXPIRES: 11/13/97

KNOW ALL MEN BY THESE PRESENTS THAT WE, THE AMERICAN NATIONAL BANK OF WICHITA, AS NEUTRAL HOLDER OF THE LAND AS ABOVE SET FORTH IN THE CIVIL ENGINEER'S AND REGISTERED LAND SURVEYOR'S CERTIFICATE, DO HEREBY CONSENT TO THE PLATTING OF THE SAME TO BE KNOWN AS "I-135 POWER CENTER", AN ADDITION TO THE CITY OF WICHITA, SEDGWICK COUNTY, KANSAS.

AMERICAN NATIONAL BANK OF WICHITA  
H.C. STALKER, VICE PRESIDENT OF REAL ESTATE

STATE OF KANSAS }  
SEDGWICK COUNTY }

BE IT REMEMBERED THAT ON THIS DAY OF 1994, BEFORE ME THE UNDERSIGNED, A NOTARY PUBLIC IN AND FOR THE COUNTY AND STATE AFORESAID, H.C. STALKER, VICE PRESIDENT OF REAL ESTATE FOR THE AMERICAN NATIONAL BANK OF WICHITA, TO ME PERSONALLY KNOWN TO BE THE SAME PERSON WHO EXECUTED THE FOREGOING INSTRUMENT OF WRITING AND ONLY ACKNOWLEDGED THE EXECUTION OF THE SAME. IN WITNESS WHEREOF, I HAVE HEREUNTO SET MY HAND AND AFFIXED MY OFFICIAL SEAL, THE DAY AND YEAR LAST ABOVE WRITTEN.

TERESA J. ROUSHKOLE, NOTARY PUBLIC  
MY COMMISSION EXPIRES: 11/13/97

STATE OF KANSAS }  
SEDGWICK COUNTY }

THIS IS TO CERTIFY THAT THIS INSTRUMENT WAS FILED FOR RECORD IN THE REGISTER OF DEEDS OFFICE AT THIS DAY OF 1994.

PAT KETTLER REGISTER OF DEEDS  
ED RESA DEPUTY

FINAL PLAT  
**I-135 POWER CENTER**  
AN ADDITION TO THE CITY OF WICHITA,  
SEDGWICK COUNTY, KANSAS

NO.	DATE	REASON	T BY

P.O. BOX 1304  
2414 NORTH JACKSON  
WICHITA, KANSAS 67201  
(316) 742-5040  
FAX 316-742-7744

**KAW VALLEY**  
ENGINEERING, INC.  
322 N.W. PARKWAY  
WICHITA, KANSAS 67201  
TEL: 316-742-5040  
FAX: 316-742-7744

**LEGEND**

- △ SECTION CORNER, FOUND
- HIGHLIGHT POINTS
- MONUMENT SET 1/2" IRON N/ SURVEY CAP STAMPED "KAW VALLEY ENGINEERS 20"

RESERVED HIGHWAY ACCESS

NOTE: ACCESS OPENING LOCATIONS TO HYDRAULIC AVENUE ARE SUBJECT TO APPROVAL BY CITY OF WICHITA ENGINEERING DEPARTMENT.

THE BASIS OF BEARINGS OF THIS SURVEY ARE ASSUMED TRUE NORTH ON THE WEST LINE OF SECTION 10, T-28-S, R-1-E AS DESCRIBED IN PRIOR SURVEYS AND DEEDS.

LOTS 3, 4 AND 5 ARE HEREBY GRANTED BY THE FILING OF THIS PLAT, AN EASEMENT FOR THE DRAINAGE OF ON-SITE STORMWATER RUNOFF, ACROSS LOT 2.

MINIMUM BUILDING PAD ELEVATION = 47.00 (C.O.M. DATUM)

THIS PLAT OF "I-135 POWER CENTER", HAS BEEN SUBMITTED TO AND APPROVED BY THE WICHITA-SEDGWICK COUNTY METROPOLITAN AREA PLANNING COMMISSION, WICHITA, KANSAS.

DATED THIS DAY OF 1994.

WICHITA-SEDGWICK COUNTY METROPOLITAN PLANNING COMMISSION

JAMES D. MANER CHAIRMAN  
MARVIN S. KRUIT SECRETARY

THIS PLAT IS APPROVED AND ALL DEDICATIONS SHOWN THEREON, IF ANY, ACCEPTED BY THE CITY COUNCIL OF THE CITY OF WICHITA, KANSAS.

DATED THIS DAY OF 1994.

ELMA BROADFOOT MAYOR  
PAT BURNETT CITY CLERK

ENTERED ON TRANSFER RECORD THIS DAY OF 1994.

SUSAN E. CHACKETT-SMITH COUNTY CLERK

