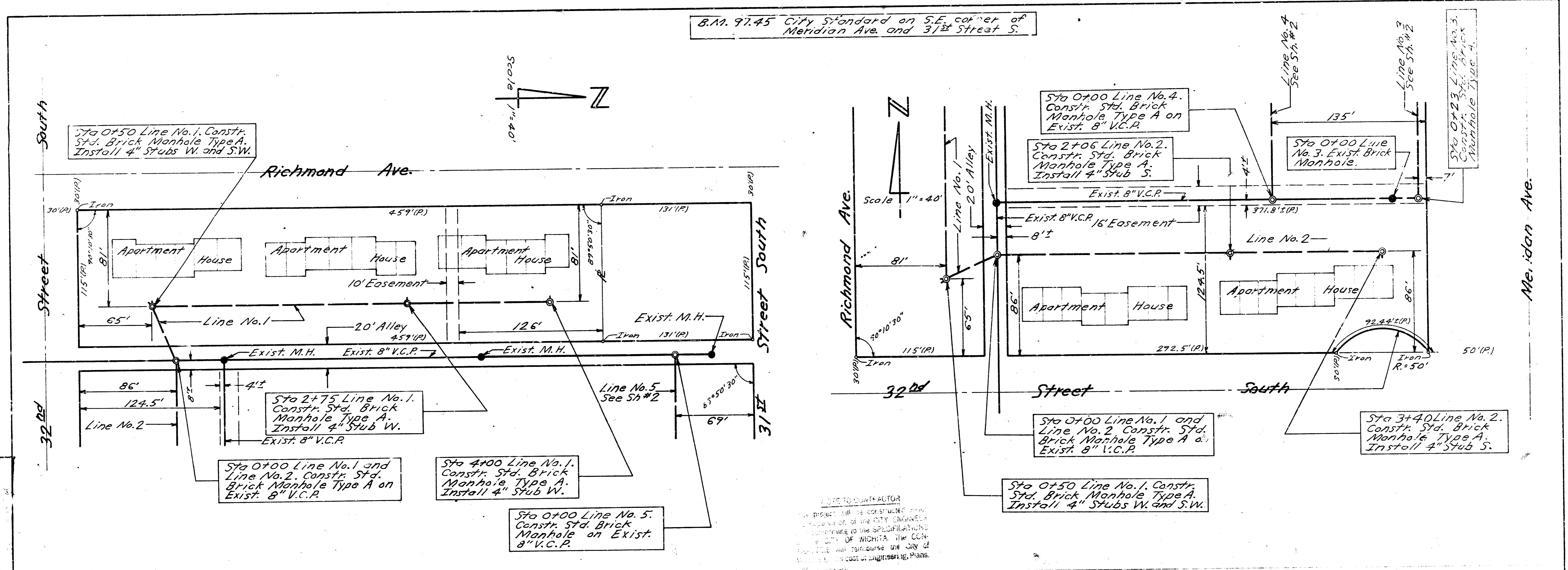
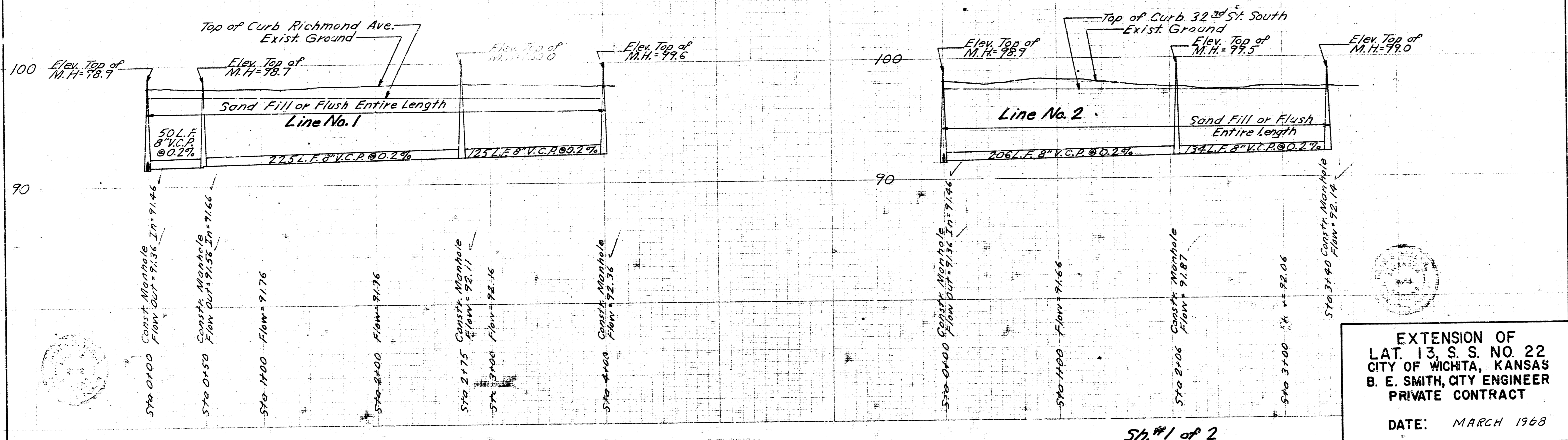


B.M. 97.45 City Standard on S.E. corner of Meridian Ave. and 31st Street S.

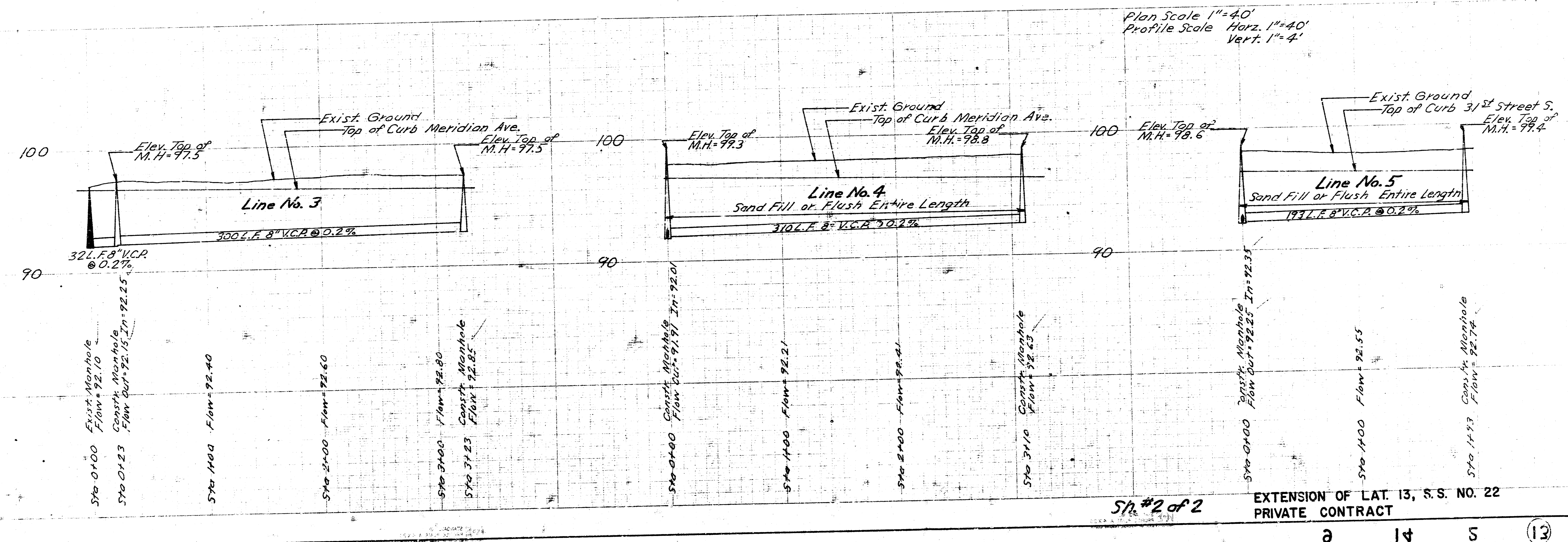
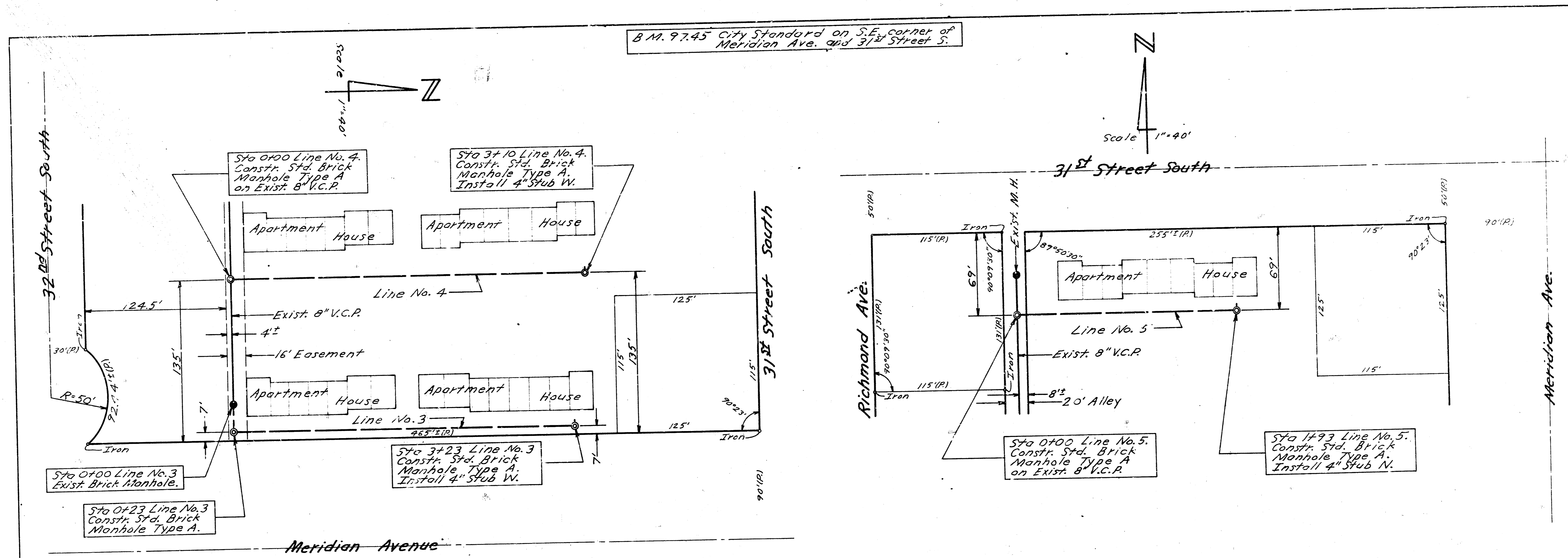


NOT TO SCALE
 THIS PROJECT WAS CONSTRUCTED UNDER THE SUPERVISION OF THE CITY ENGINEER OF WICHITA, KANSAS. THE CITY ENGINEER HAS REVIEWED THE PLANS AND APPROVES THEM AS SHOWN ON THESE PLANS.

Plan Scale 1"=40'
 Profile Scale Horiz. 1"=40'
 Vert. 1"=4'



EXTENSION OF
 LAT. 13, S. S. NO. 22
 CITY OF WICHITA, KANSAS
 B. E. SMITH, CITY ENGINEER
 PRIVATE CONTRACT
 DATE: MARCH 1968



Plan Scale 1"=40'
Profile Scale Horiz. 1"=40'
Vert. 1"=4'

Sheet #2 of 2
EXTENSION OF LAT. 13, S.S. NO. 22
PRIVATE CONTRACT