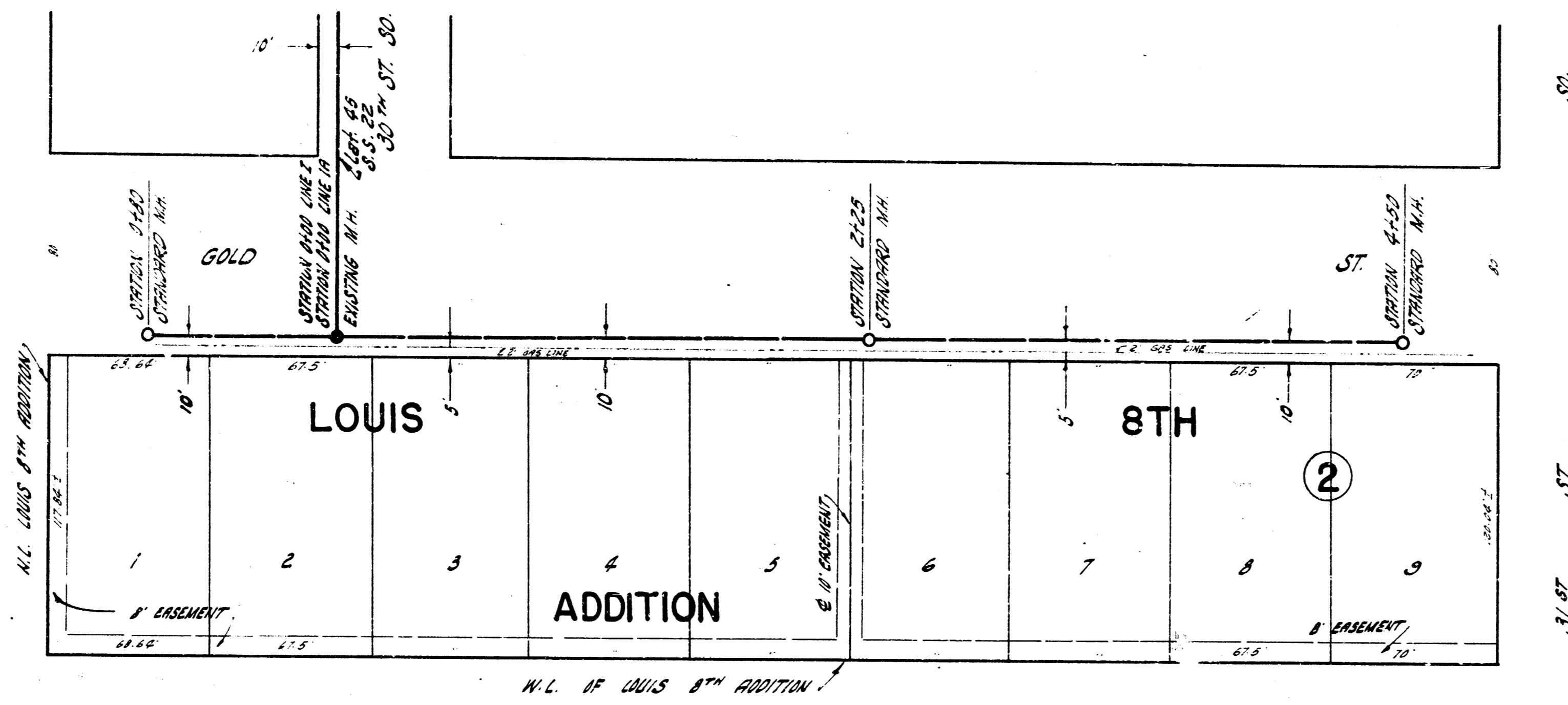
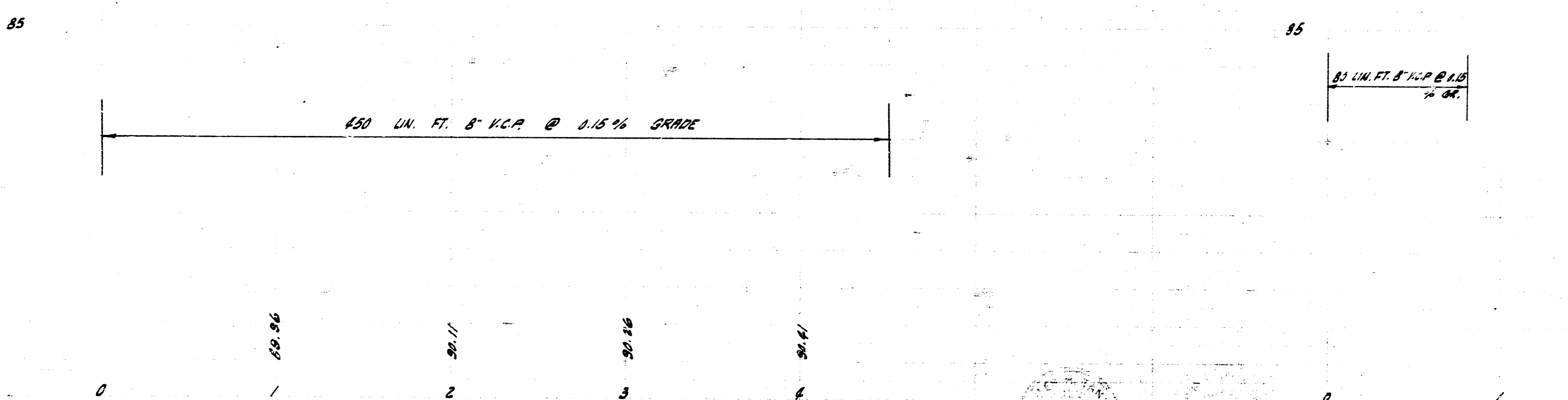
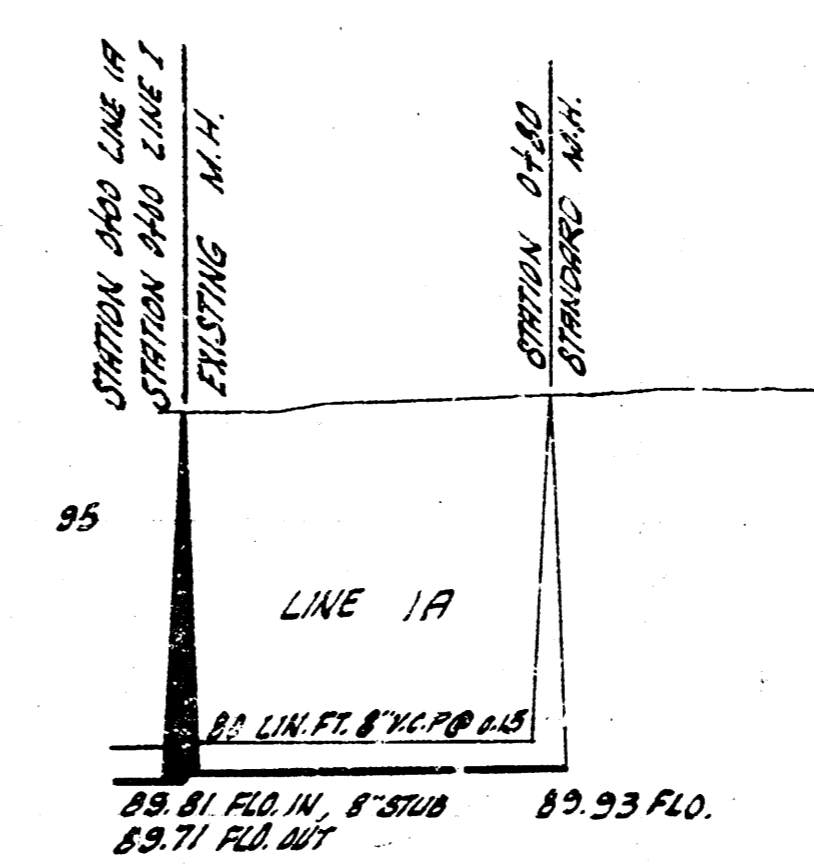
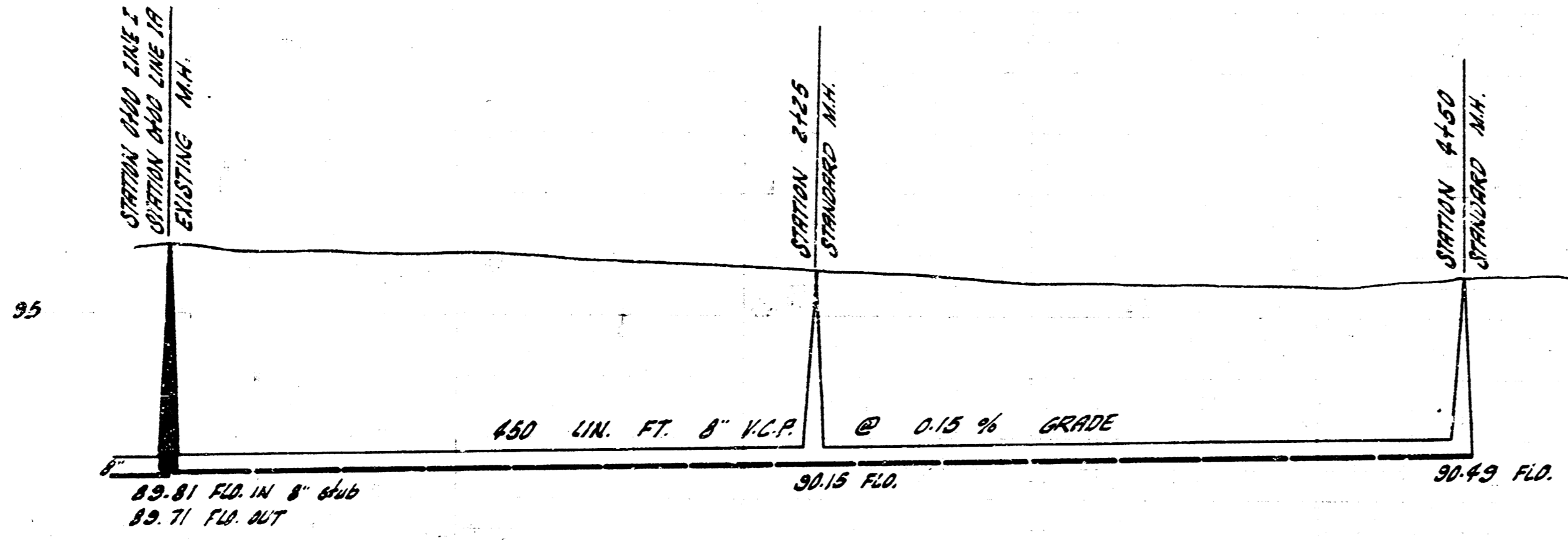


SURVEY BY W. H. HANSEN - DE 11-31-57
 DRAWN BY C.M.G.
 CHECKED BY



PLAN SCALE 1" = 40'
 PROFILE SCALE 1" = 4' VERT. 1" = 10' HORIZ.

B.M. 22.71 WEST RIM NH @ 31ST ST. SO. 12.5' E. OF EL. LOUIS 8TH ADDITION.
 B.M. 24.37 'X' ON S.E. CUR. STEP TO SPARTANUS CLUB NW. CUR. 31ST ST. SO. @ LAWRENCE



LATERAL 46 SAN SEWER 22
 CITY OF WICHITA, KANSAS
 B. E. SMITH, CITY ENGINEER
 PROJ. NO. C-28-10 DATE MAY 1958