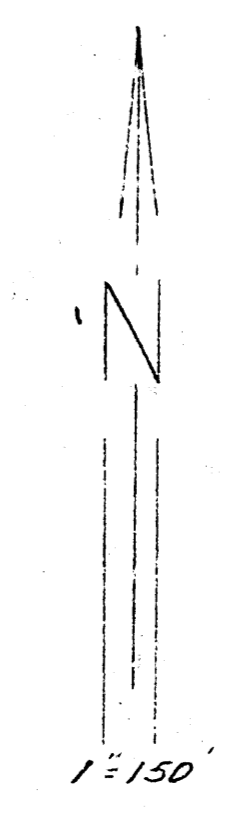
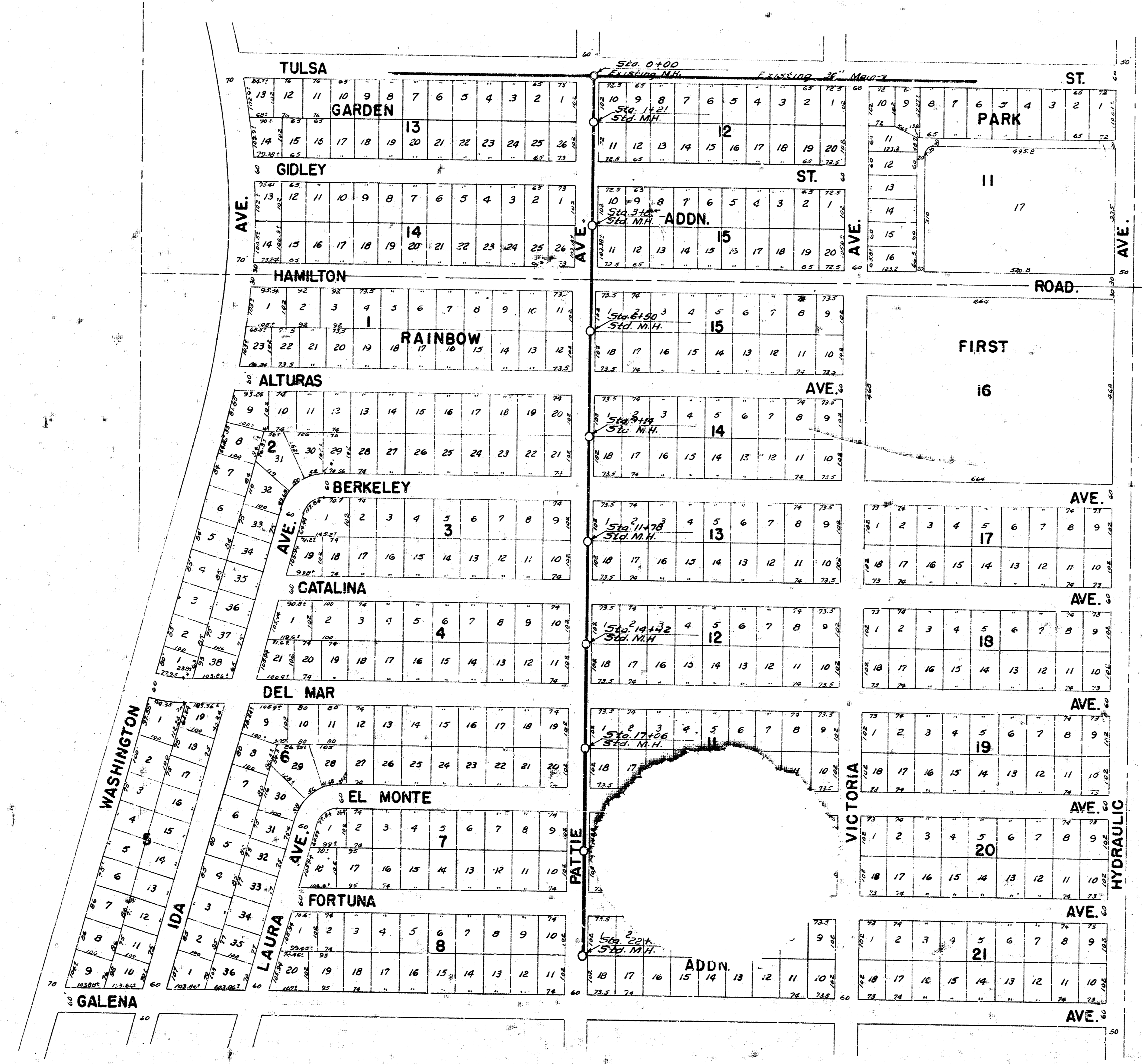
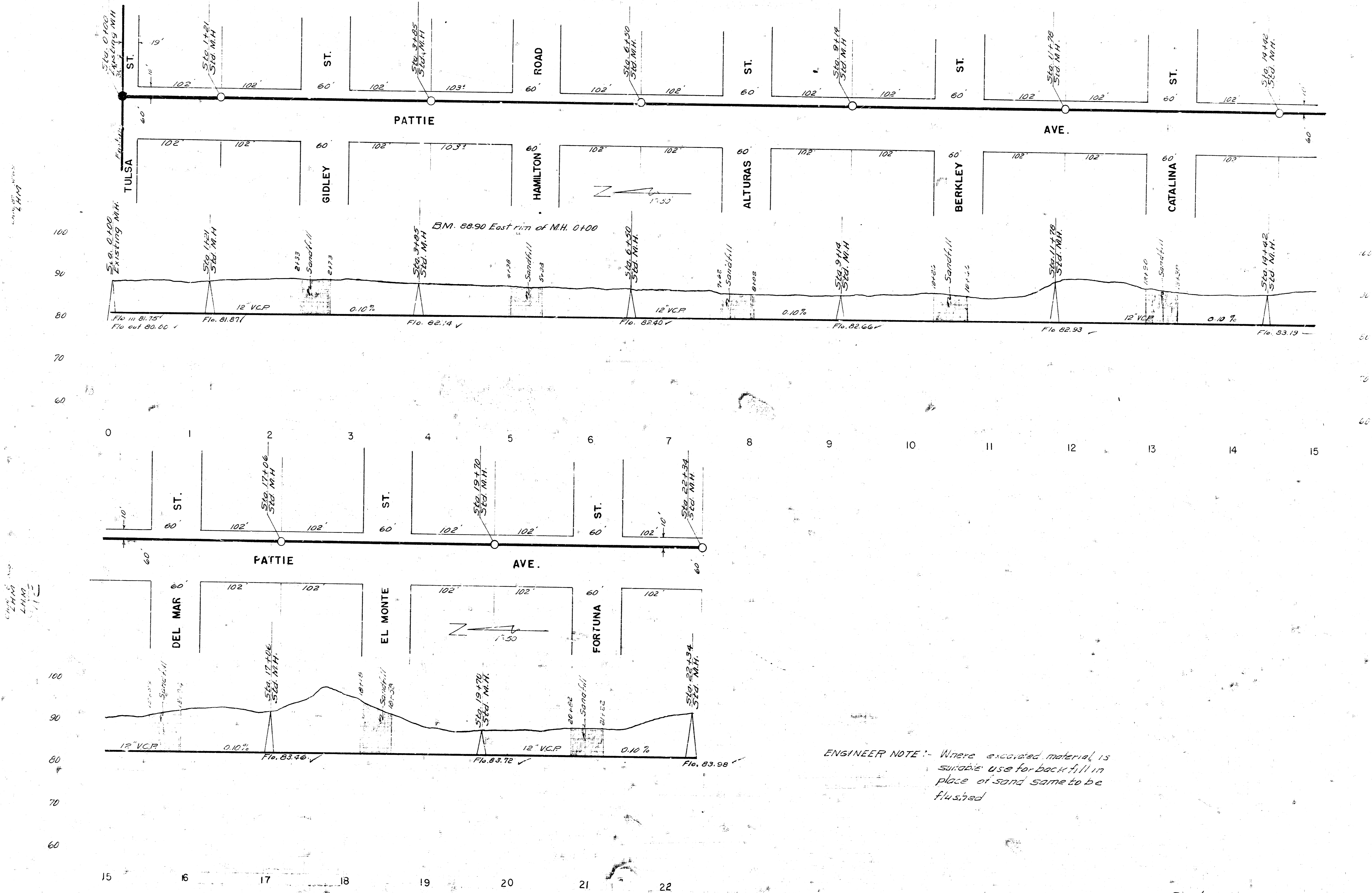


BENIFIT DISTRICT

SUB-MAIN I SANITARY SEWER NO. 22



SUB-MAIN I SAN. SEWER 22
 CITY OF WICHITA, KANSAS
 BESMITH CITY ENGINEER
 Proj. No. C 24-B
 Sheet 1 of 2



ENGINEER NOTE: Where excavated material is suitable use for backfill in place of sand same to be flushed