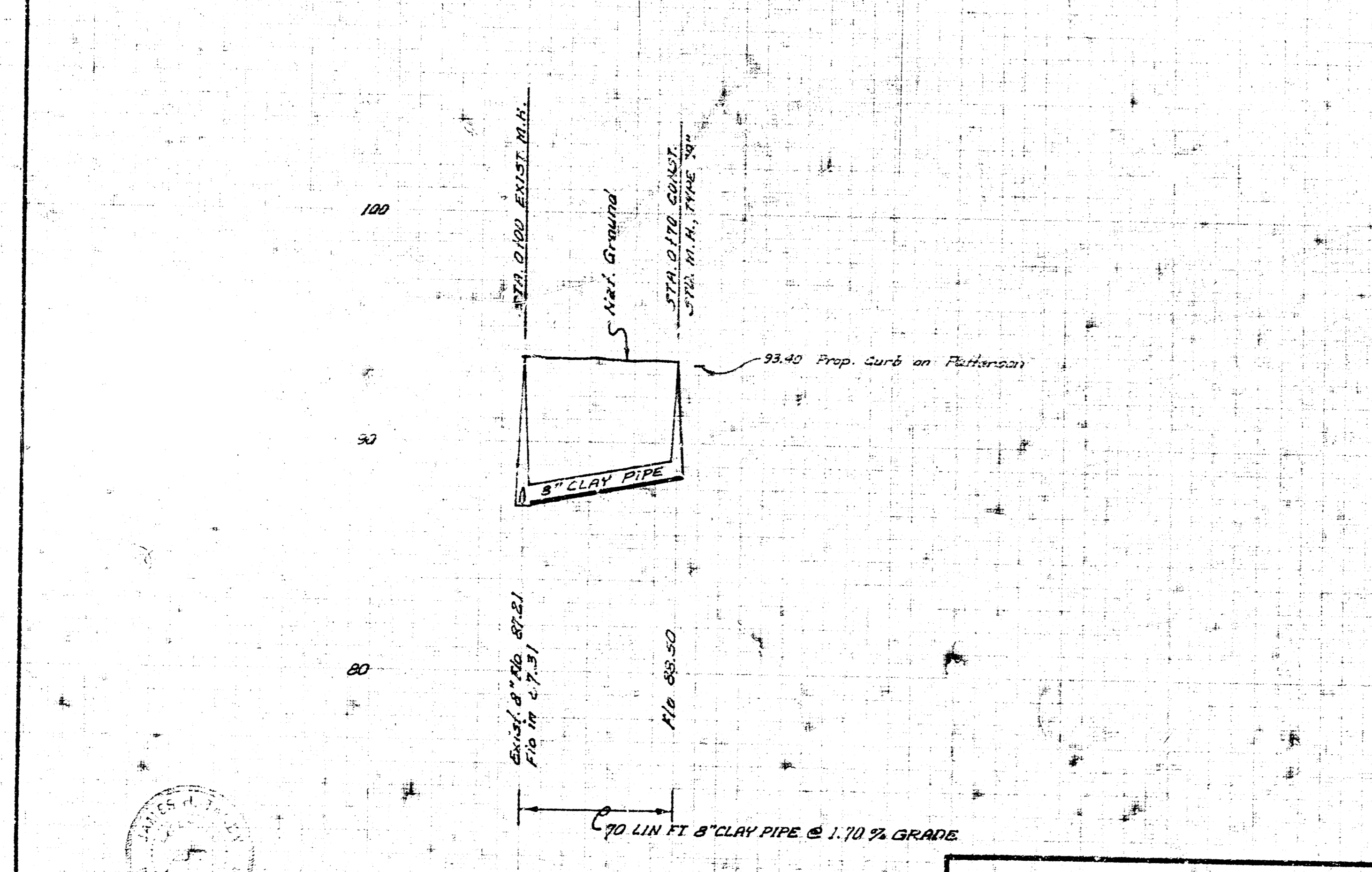
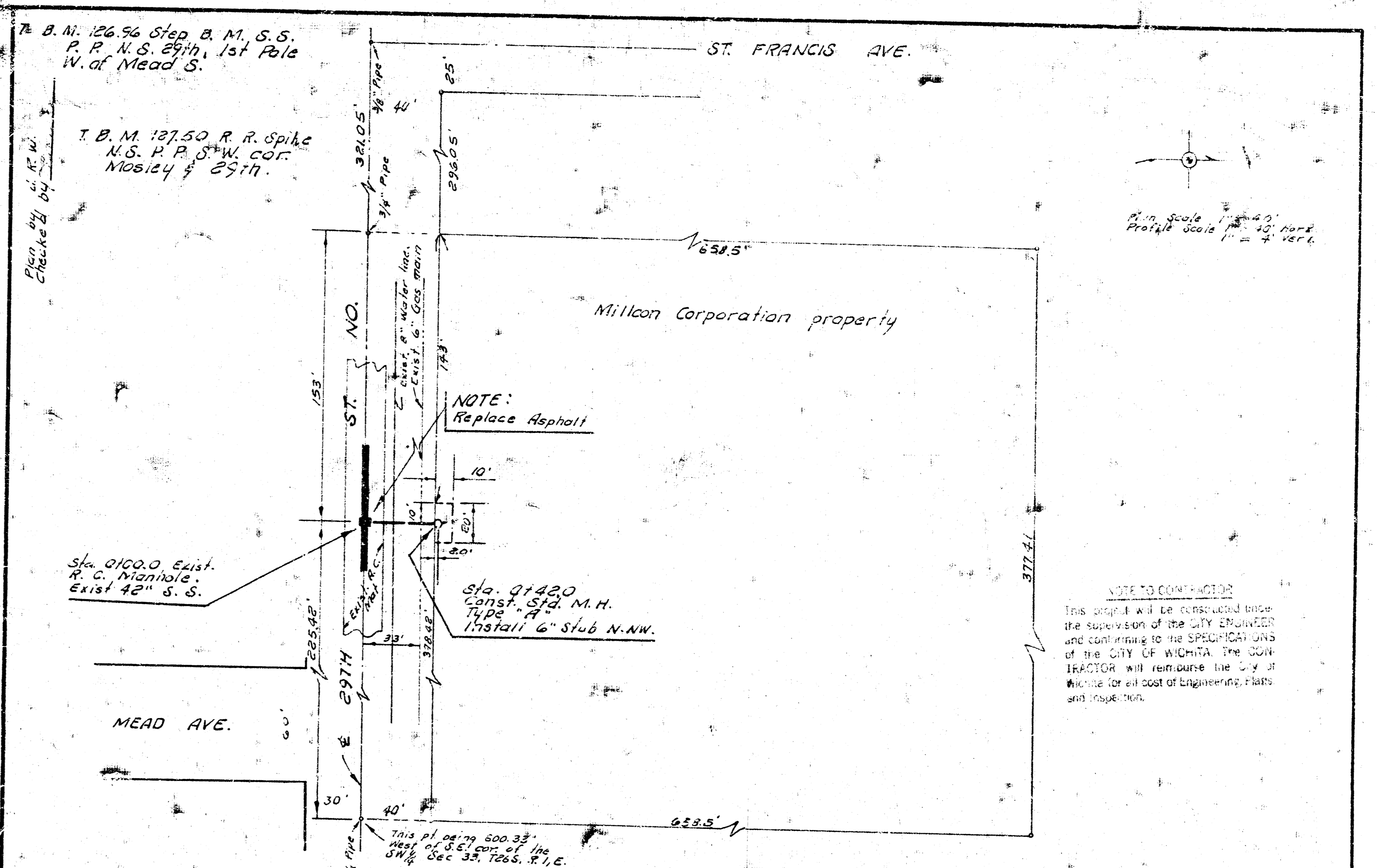


B.M. 94.08 E. Rim M.H. 309.9' W. of Sta. 0+00  
 B.M. 95.259 Standard S.E. Seneca & 31st ST. SO.

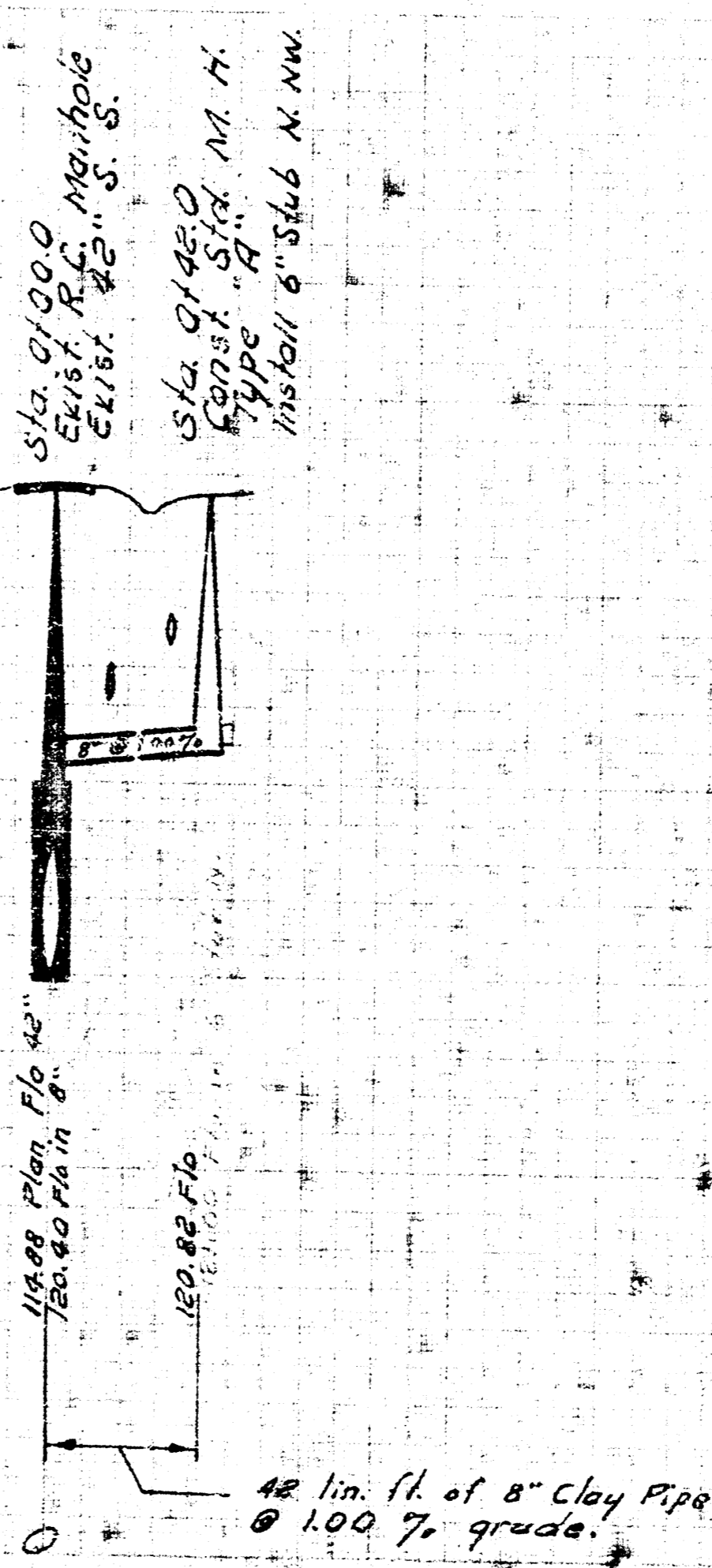
Plan Scale 1"=40'  
 Profile Scale 1"=4' Vert.



EXTENSION OF LAT. 23, SUB. 2, S. 5. 22  
 CITY OF WICHITA, KANSAS  
 B. E. SMITH, CITY ENGINEER  
 DATE: APRIL, 1970



NOTE TO CONTRACTOR  
 This work will be constructed under the supervision of the CITY ENGINEER and conforming to the SPECIFICATIONS of the CITY OF WICHITA. The CONTRACTOR will reimburse the City of Wichita for all cost of Engineering, Plans and Issue Fees.



MILLCON CORPORATION  
 SANITARY SEWER  
 NE. 29th St. & St. Francis  
 CITY OF WICHITA, KANSAS  
 B. E. SMITH, CITY ENGINEER  
 JULY 1970