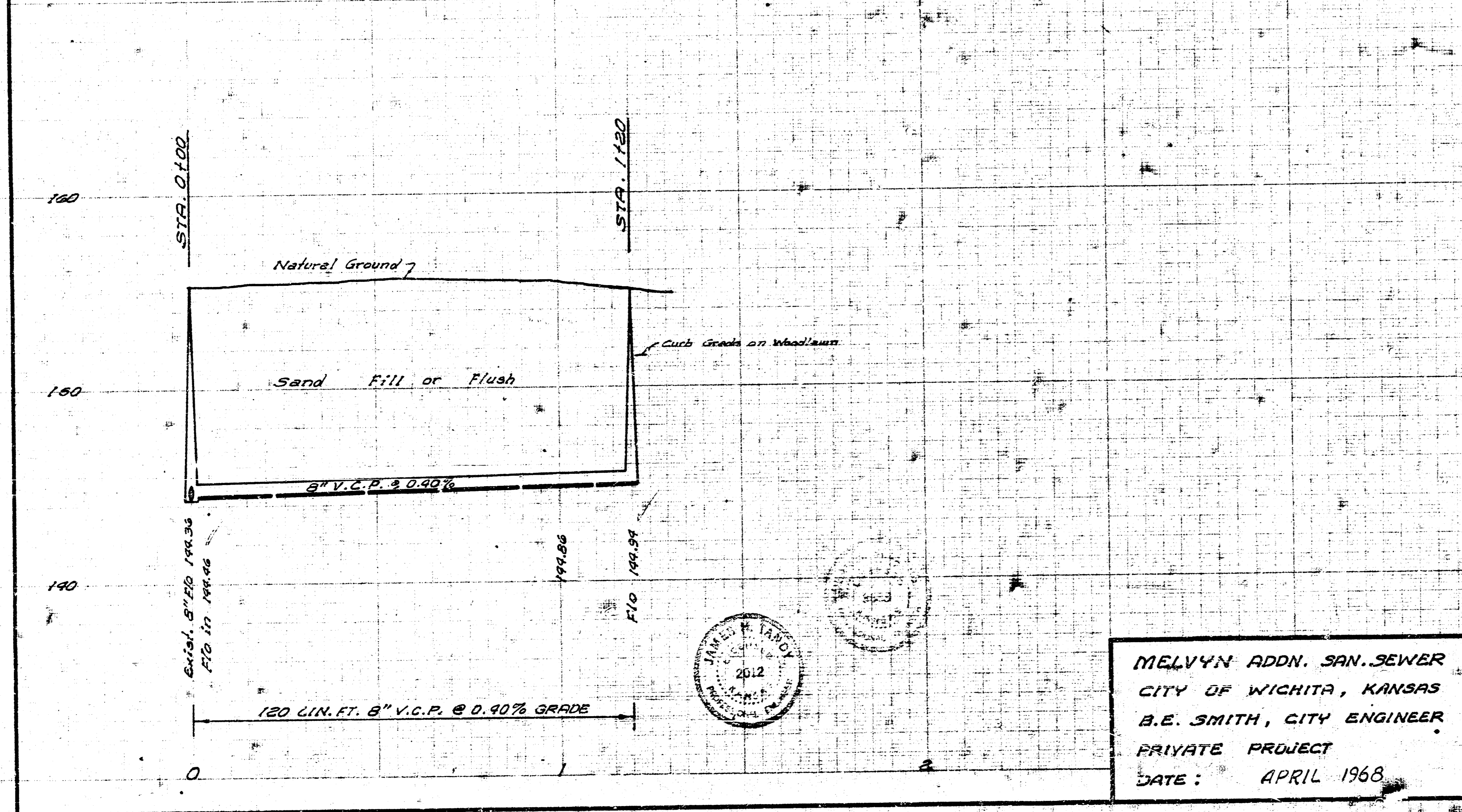
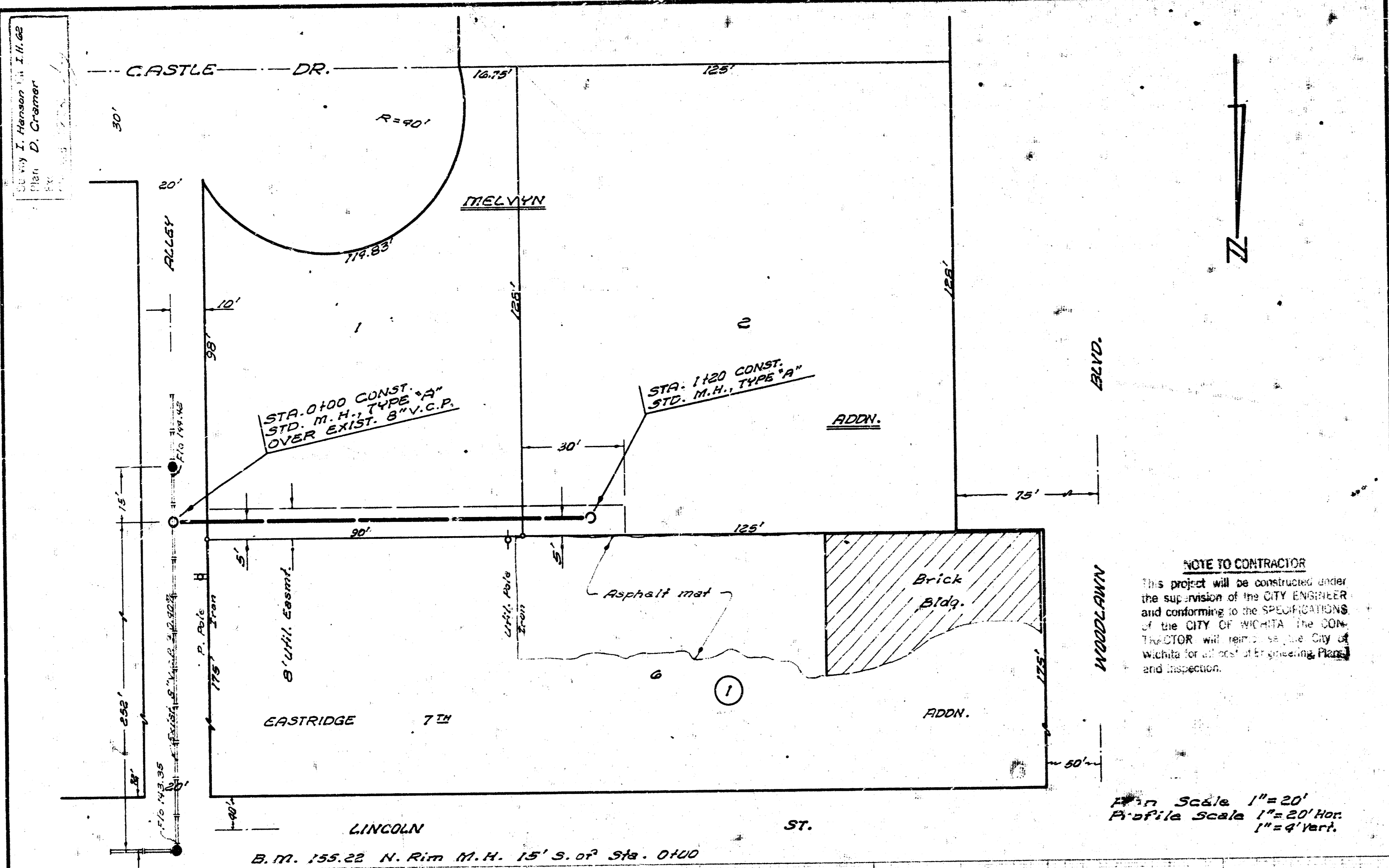
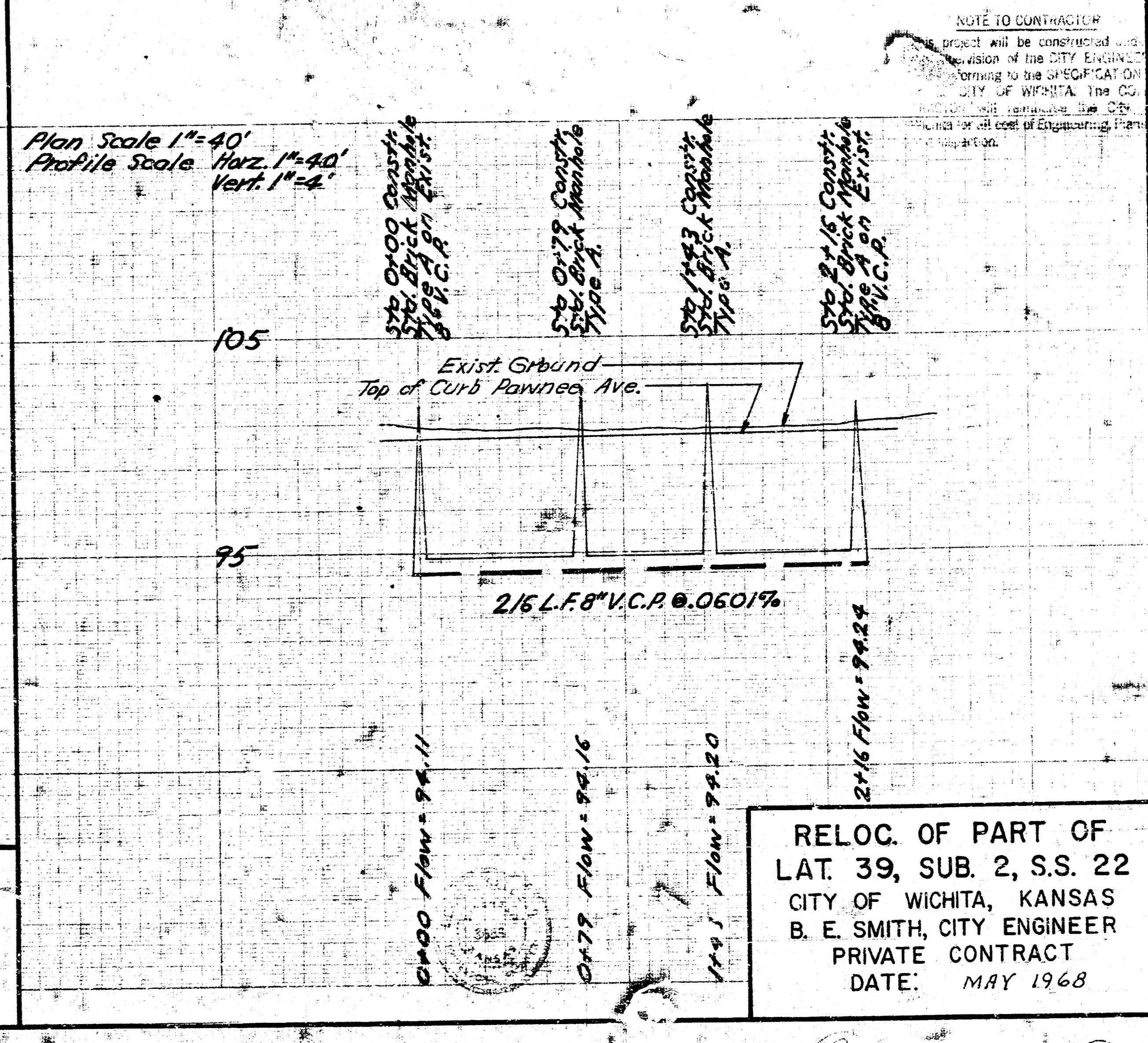
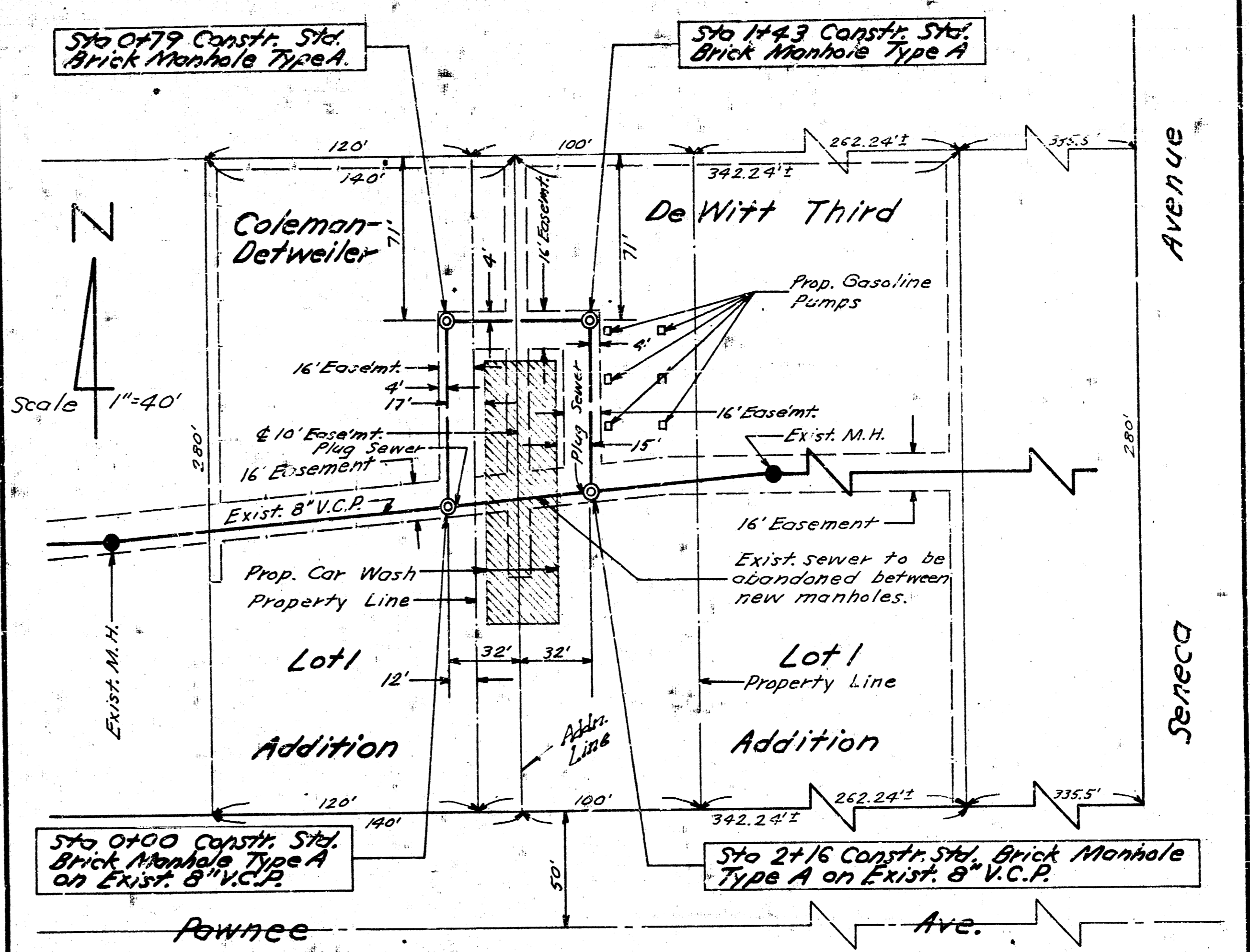


City of Wichita
 B. E. Smith, City Engineer
 Private Contract
 Date: May 1968



MELVYN ADDN. SAN. SEWER
 CITY OF WICHITA, KANSAS
 B. E. SMITH, CITY ENGINEER
 PRIVATE PROJECT
 DATE: APRIL 1968



RELOC. OF PART OF
 LAT. 39, SUB. 2, S.S. 22
 CITY OF WICHITA, KANSAS
 B. E. SMITH, CITY ENGINEER
 PRIVATE CONTRACT
 DATE: MAY 1968