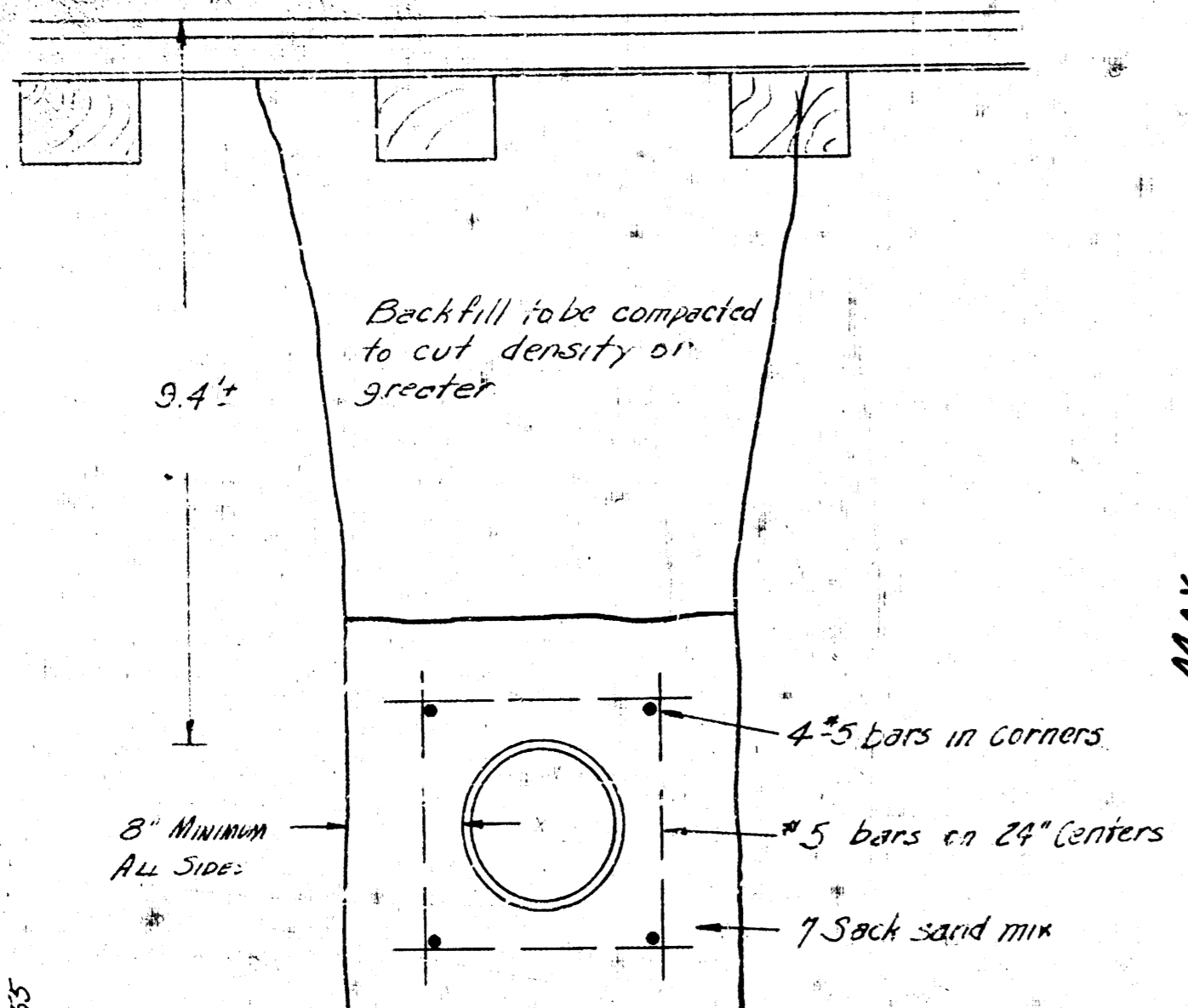
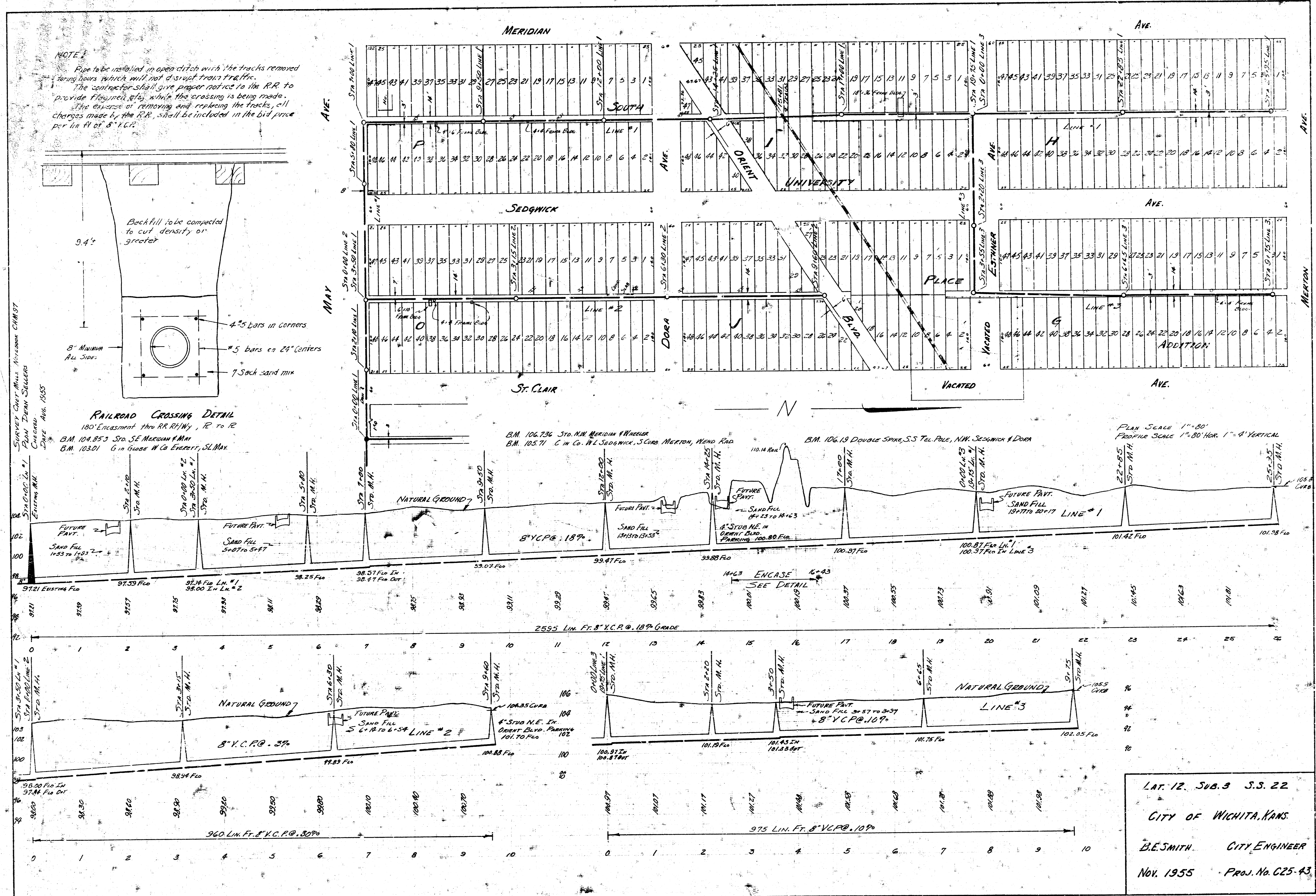


NOTE:
 Pipe to be installed in open ditch with the tracks removed during hours which will not disrupt train traffic. The contractor shall give proper notice to the RR to provide flagging etc. while the crossing is being made. The expense of removing and replacing the tracks, all charges made by the RR, shall be included in the bid price per lin ft of 8" V.C.P.



RAILROAD CROSSING DETAIL
 180° Encasement thru RR R/W, R to R
 B.M. 104.853 Sta. SE Meridian & M
 B.M. 103.01 G in Globe W Co Everett, SL Max

SURVEY CHART MASS. NICHOLSON CHART
 PLAN JOHN SULLIVAN
 CHECKED
 DATE AUG. 1955



LAT. 12. SUB. 3 S. 3. 22
 CITY OF WICHITA, KANS.
 E. E. SMITH CITY ENGINEER
 NOV. 1955 Proj. No. C25-43