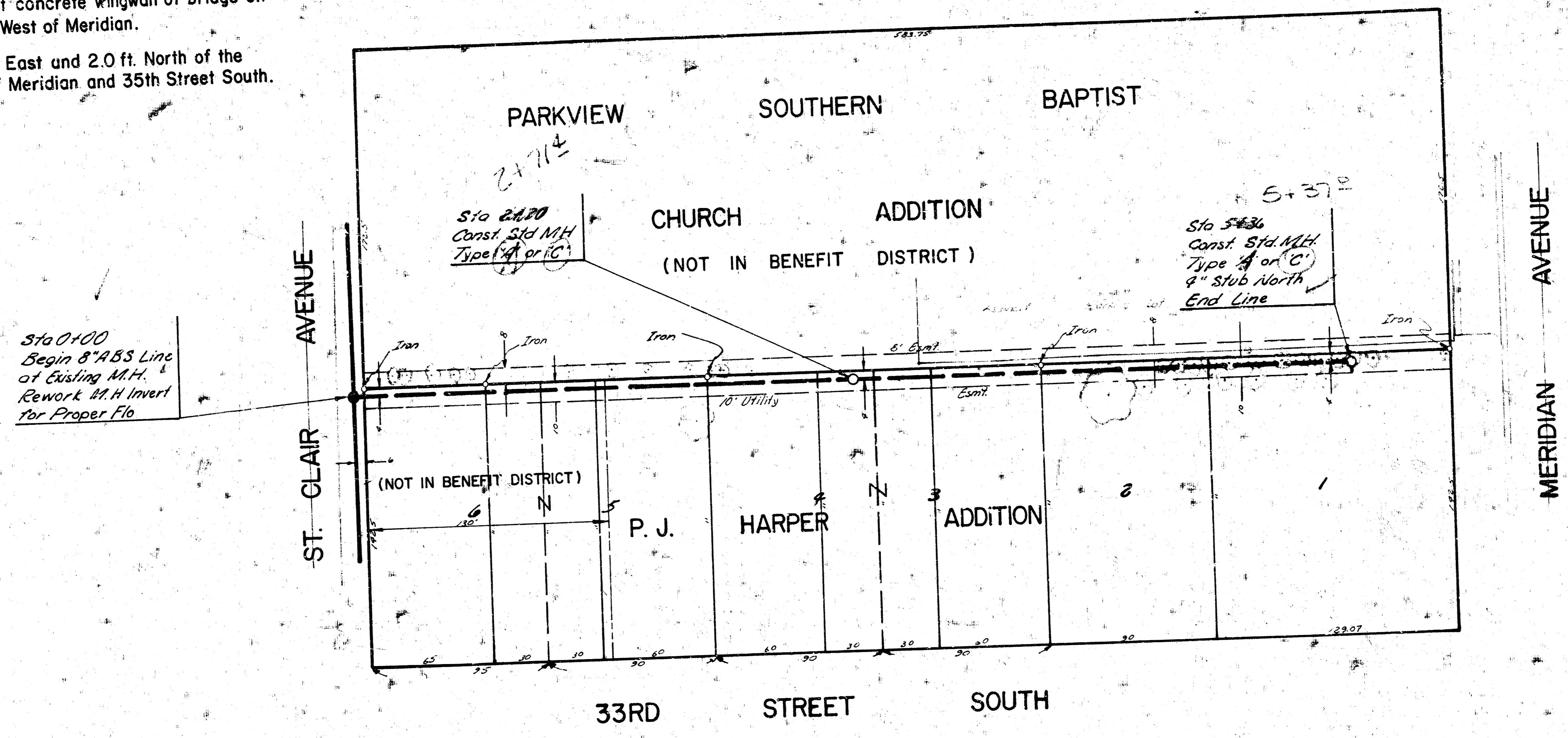


B.M. 96.30 "□" Top of Northeast concrete wingwall of bridge on 33rd Street South, West of Meridian.  
 B.M. 95.65 City Std. Disc 6.0 ft. East and 2.0 ft. North of the Northwest corner of Meridian and 35th Street South.



Plan Scale: 1" = 40'  
 Profile Scale: 1" = 40' Horz.  
 1" = 5' Vert.

Sta 0+00  
 Begin 8" ABS Line  
 of Existing M.H.  
 Rework M.H. Invert  
 for Proper Flo



LAT 33 MAIN 3 S.S. 22  
 CITY OF WICHITA, KANSAS  
 R.W. LINN CITY ENGINEER  
 PROJECT NUMBER: 468-76-245-00241-000-000-001  
 DATE:

14 5 4 3