

Street Paving and Incidental Storm Water Sewer

to serve

HARVEST RIDGE ADDITION - PHASE III

Hollywood, from the west line of Lot 18, Block C, west and north to the south line of lot 1, Block D.

35th Street S., from the west line of Hollywood, west to the west line of plat.

Shefford, from the north line of Hollywood, north to the north line of plat.

Hollywood Ct., from the north line of Hollywood, north to and including the cul-de-sac to serve Lots 34, J-R, 40-42, 47, 48.

Hollywood Ct., from the north line of Hollywood, north to and including the cul-de-sac to serve Lots 49, 50, S-Z, 55-57, 62, 63.

CITY OF WICHITA, KANSAS

James L. Armour, P.E. City Engineer

Project Number

472-83806

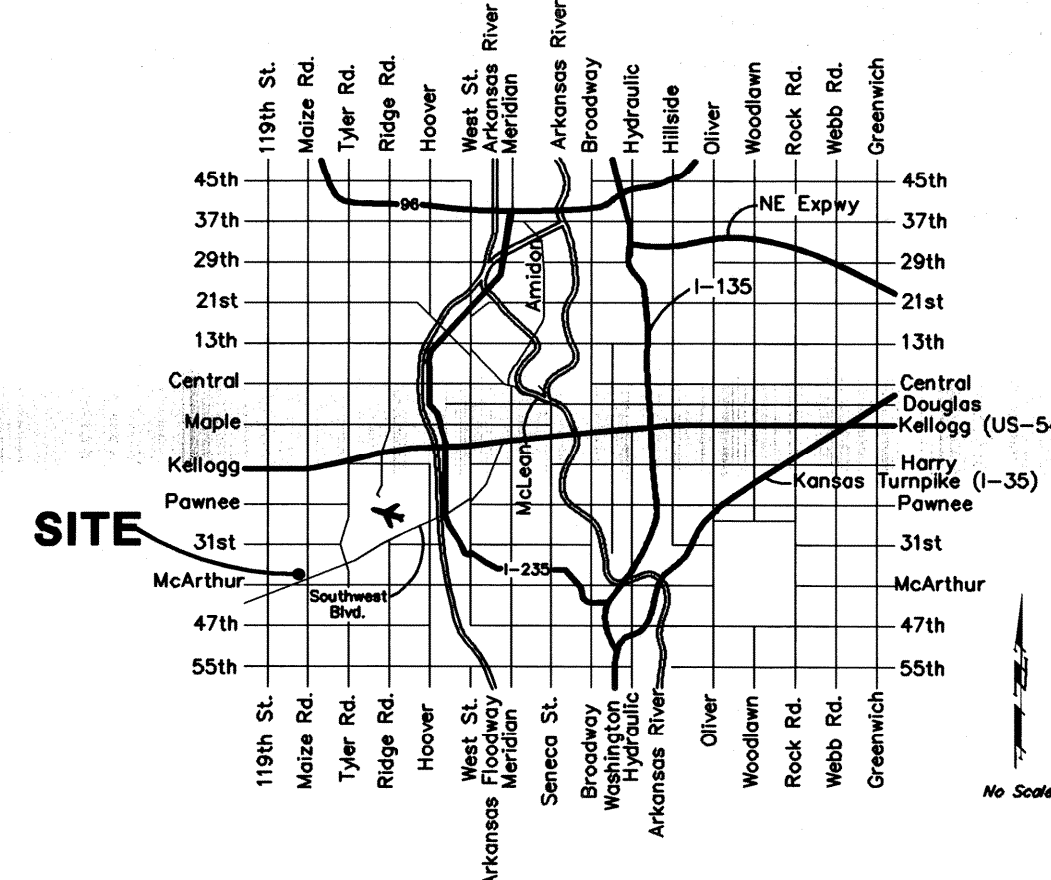
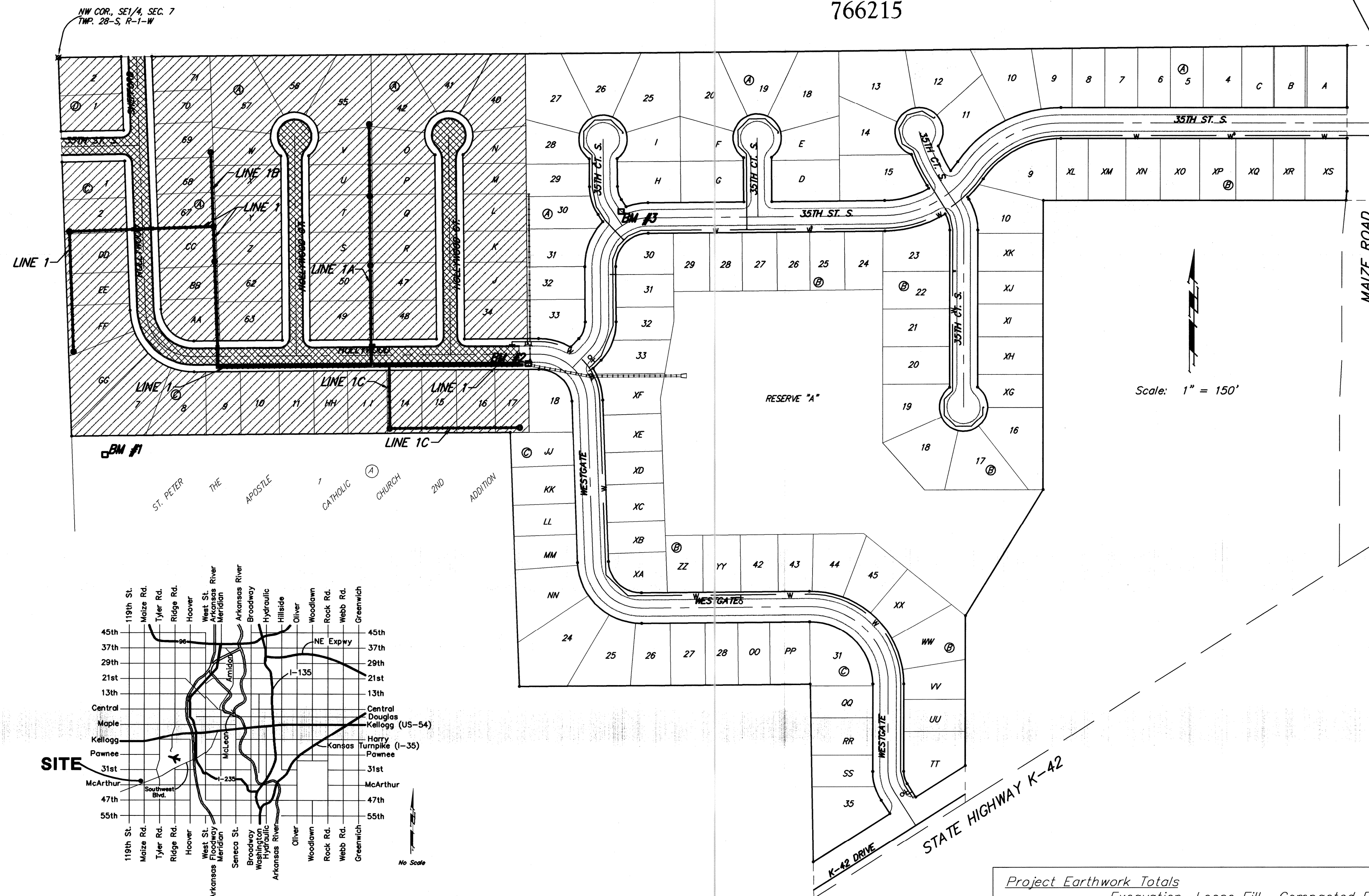
O.C.A. Number

766215

NE COR., SE1/4, SEC. 7,
TWP. 28-S, R-1-W

Sheet Index

| | |
|---|-------|
| Title Sheet | 1 |
| 35' Pavement Detail | 2 |
| 29' Pavement Detail | 3 |
| Sign Details | 4 |
| Miscellaneous Details | 5 |
| Hollywood | 6-8 |
| 35th St. S | 9 |
| Hollywood Ct. (Lots 34, J-R, 40-42, 47, 48) | 10 |
| Hollywood Ct. (Lots 49, 50, S-Z, 55-57, 62, 63) | 11 |
| SWS Line 1 | 12-16 |
| SWS Line 1A | 17 |
| SWS Line 1B & 1C | 18 |
| Shallow Manhole Detail | 19 |
| Std. Manhole Detail | 19A |
| Ring & Cover Detail | 20 |
| Special Yard Inlet Detail | 21 |
| Std. Type 1A Curb Inlet Dtl. (Single) | 22 |
| Std. Type 1A Curb Inlet Dtl. (Double) | 23 |
| Mass Grading Plan | 24 |
| Erosion Control Plan | 24A |
| Erosion Control Details | 25-28 |
| Earthwork Cross-Sections | 29-36 |
| Coordinate Sheet | 37 |
| Copy of Plat | 38 |



Vicinity Map

- Benefit District
- Proposed Streets

| Project Earthwork Totals | | | |
|-----------------------------|---------------|--------------|----------------|
| | Excavation | Loose Fill | Compacted Fill |
| Mass Grading | 17,000 | 3,000 | N/A |
| Street (R/W) | 2,714 | 370 | 3 |
| Project Total | 19,714 | 3,370 | 3 |
| Total Project Length | | | |
| 2,325 L.F. = 0.44 Miles | | | |



Baughman Company, P.A. 315 Ellis St. Wichita, KS 67211 P 316-262-7271 F 316-262-0145
ENGINEERING | SURVEYING | PLANNING | LANDSCAPE ARCHITECTURE

GENERAL NOTES:

1. Contractor will be required to provide notice to utility companies a minimum of forty-eight (48) hours prior to any excavation, as follows:

Kansas One-Call 687-2470

The Contractor must notify the following in case of an emergency:

Cox Communications 262-4270
 Kansas Gas Service 1-888-482-4950
 Westar Energy 383-8650
 Aquila Energy 1-800-303-0357
 SBC 268-2245
 City of Wichita Water Dept. 268-4563
 City of Wichita Sewer Maint. 268-4024
 City of Wichita Storm Sewer Maint. 268-4034
 City of Wichita Traffic Maint. 268-4034
 Conoco Phillips Pipeline Co. 1-877-267-2290
 Southern Star Pipeline Co. 529-6600
 Kinder-Morgan Pipeline Co. 1-888-844-5658

2. Utility service lines, poles, valve boxes, meters, and etcetera are to be adjusted as necessary by others prior to construction unless the plans specifically call for their adjustment by the Contractor or unless the plans specifically identify a utility to be adjusted by its owner during construction. Existing utilities and their location, as shown on the plans, represent the best information obtainable for design. The Contractor will be required to work around existing utilities within the right-of-way which do not conflict with proposed construction.

3. Rubble from the removal of miscellaneous structures and excess excavation which is to be wasted shall be disposed of on sites to be provided by the Contractor. These sites shall be approved by the Engineer as to suitability, appearance and site location. Locations, in the opinion of the Engineer, that will leave an unsightly appearance will not be approved. All disposal sites must be approved by the Kansas Department of Health and Environment. Material either stockpiled or disposed of in a flood plain would require a Kansas State Board of Agriculture permit. Any material dumped in waters of the United States or wetlands is subject to U.S. Corps of Engineers permitting regulations. Any material buried or stockpiled beyond approved construction limits would require additional archaeological investigations unless buried in a previously approved borrow location.

4. Trees and shrubs in public right-of-way which are in direct conflict with proposed new construction shall be removed by the Contractor with the Engineer's approval. Trees and shrubs which are not in direct conflict with proposed new construction shall be saved and protected from damage.

5. The Contractor shall give all property owners and/or tenants of developed property abutting the construction of this project a minimum of ten (10) days notice prior to start of construction.

6. The Contractor shall be responsible for preserving property irons. The Contractor will be required to re-establish any property irons which are damaged or destroyed by his construction operations. Such irons shall be re-established by a licensed land surveyor in accordance with state laws.

7. All existing and proposed erosion control measures including silt fencing, erosion control mat, straw bales, inlet barriers, and const. entrance shall be maintained throughout construction by the contractor and until project is accepted by the City of Wichita. The on-site engineer shall complete weekly reports on the status of erosion control measures. The contractor shall be required to comply with maintenance and/or replacement of erosion control measures as determined by the on-site engineer until project is accepted by City of Wichita.

8. All water mains and appurtenances shall be installed in accordance with City of Wichita, Kansas Standard Specifications for Water Main Installations No. 145.33.

9. Opening and closing of water valves shall be done slowly to prevent damage to the water distributions system from water hammer. All valves closed by the contractor must be reopened as new construction permits. Project inspector must ascertain that any valve closed by the Contractor is reopened. Contractor will be permitted to operate water valves only when the project inspector assigned to the project is present.

10. The developer for this project is Paul E. Kelsey, and may be reached at (316) 722-1077