

Benchmarks

BM #1: "□" Cut in Top of Curb at Northwest Corner of Parking Lot, Lot 7, Block A, St. Peter the Apostle Catholic Church 2nd Addition. Elev. = 150.34 (City Datum)

BM #2: "□" Cut in E of Curb Inlet Top Adjacent to Northeast Corner of Lot 17, Block C, Harvest Ridge Addition. Elev. = 145.89 (City Datum)

BM #3: "+" Cut in E of Curb Adjacent to Southwest Corner of Tract "H" Block A, Harvest Ridge Addition. Elev. = 148.67 (City Datum)

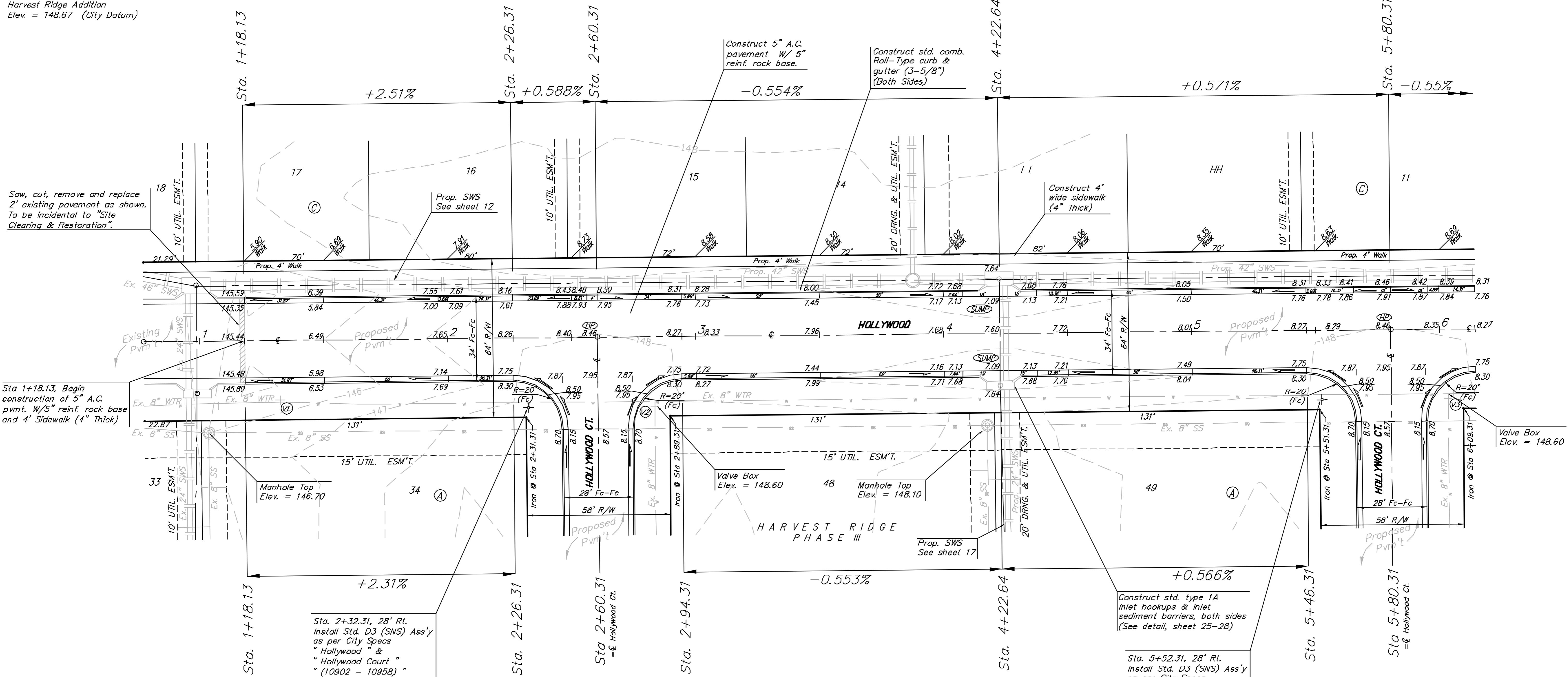
Scale: 1" = 20'
• = Iron

P.V.I. Elev. = 148.30
60' V.C.

P.V.I. Elev. = 148.50
No V.C.

P.V.I. Elev. = 147.60
30' V.C.

P.V.I. Elev. = 148.50
30' V.C.



Saw, cut, remove and replace 2" existing pavement as shown. To be incidental to "Site Clearing & Restoration".

Sta 1+18.13, Begin construction of 5" A.C. pvm't. W/5" reinf. rock base and 4" Sidewalk (4" Thick)

VALVE LOCATION TABLE

VALVE NUMBER	BASELINE STATION	OFFSET DISTANCE	OFFSET DIRECTION
1	1+32.68	24.75	Rt.
2	2+83.31	26	Rt.
3	6+03.31	26	Rt.

Paving contractor will be responsible to operate all water valves on the project, in the presence of the inspector, to ensure accessibility to the valves, and that all valves are left in the "ON" position when the project is completed.

Note: Contours shown represent the site after Mass Grading has been completed. Cross sections are based on the site after Mass grading

NOTE: ROLL TYPE CURB & GUTTER TO BE CONSTRUCTED ON THE PAVEMENT SHOWN ON THIS SHEET. TOP OF CURB ELEVATIONS ARE GIVEN FOR FULL HEIGHT CURB.

	HARVEST RIDGE - PH. III	
	HOLLYWOOD Sta. 1+18.13 to 5+80.31	
Baughman Company, P.A. 313 New St., Woburn, MA 02458 F 978-235-7771 F 978-235-0196		
ENGINEERING SURVEYING PLANNING LANDSCAPE ARCHITECTURE		
PROJECT NUMBER 47283807	DESIGN MWS	DRAWN JRW
REVISIONS	APPROVED MWS	DATE 3/24/08
SCALE Noted		SHEET 6 OF 38
E:\Harvest Ridge\Phase 3\STRV06-11.Str.dwg 06/12/07		