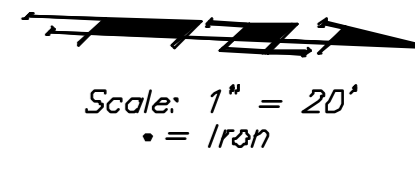


**Benchmarks**

BM #1: "□" Cut in Top of Curb at Northwest Corner of Parking Lot, Lot 1, Block A, St. Peter the Apostle Catholic Church 2nd Addition.  
Elev. = 150.34 (City Datum)

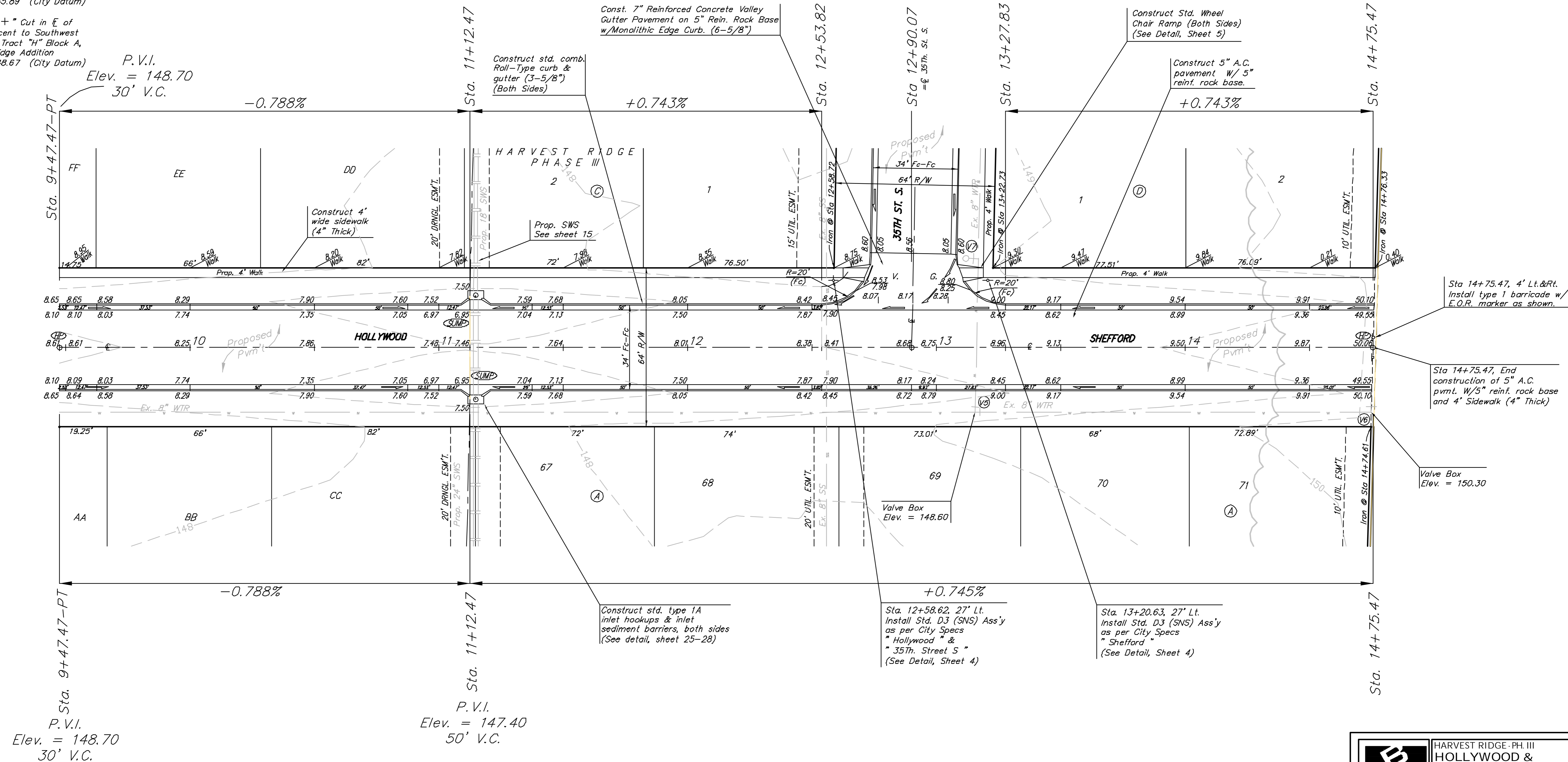
BM #2: "□" Cut in E of Curb Inlet Top Adjacent to Northeast Corner of Lot 17, Block C, Harvest Ridge Addition.  
Elev. = 145.89 (City Datum)

BM #3: "+" Cut in E of Curb Adjacent to Southwest Corner of Tract "H" Block A, Harvest Ridge Addition.  
Elev. = 148.67 (City Datum)



P.V.I.  
Elev. = 147.40  
50' V.C.

P.V.I.  
Elev. = 148.70  
30' V.C.



Sta 14+75.47, 4' Lt.&Rt. Install type 1 barricade w/ F.O.R. marker as shown.

Sta 14+75.47, End construction of 5" A.C. pvmt. W/5" reinf. rock base and 4" Sidewalk (4" Thick)

Valve Box Elev. = 150.30

Construct std. type 1A inlet hookups & inlet sediment barriers, both sides (See detail, sheet 25-28)

Sta. 12+58.62, 27' Lt. Install Std. D3 (SNS) Ass'y as per City Specs "Hollywood" & "35th. Street S" (See Detail, Sheet 4)

Sta. 13+20.63, 27' Lt. Install Std. D3 (SNS) Ass'y as per City Specs "Shefford" (See Detail, Sheet 4)

**VALVE LOCATION TABLE**

VALVE NUMBER	BASELINE STATION	OFFSET DISTANCE	OFFSET DIRECTION
5	13+15.55	26	Rt.
6	14+74.77	26	Rt.

Paving contractor will be responsible to operate all water valves on the project, in the presence of the inspector, to ensure accessibility to the valves, and that all valves are left in the "ON" position when the project is completed.

Note: Contours shown represent the site after Mass Grading has been completed. Cross sections are based on the site after Mass grading

NOTE: ROLL TYPE CURB & GUTTER TO BE CONSTRUCTED ON THIS SHEET. TOP OF CURB ELEVATIONS ARE GIVEN FOR FULL HEIGHT CURB.

	<b>HARVEST RIDGE - PH III HOLLYWOOD &amp; SHEFFORD</b> Sta. 9+47.47 to 14+75.47	
	Baughman Company, P.A. 313 Main St., Waltham, MA 02451 F5164237271 F5164237271 ENGINEERING   SURVEYING   PLANNING   LANDSCAPE ARCHITECTURE	
PROJECT NUMBER 47283807	DESIGN MWS	DRAWN JRW
REVIEWER	APPROVED MWS	DATE 3/24/08
SCALE Noted		SHEET 8 OF 38
E:\Harvest Ridge\Phase 3\STRV06-11_SRDwg		06-12-E710