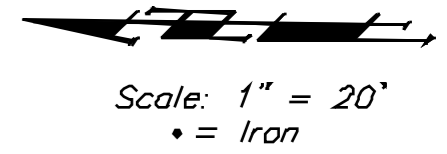


Benchmarks

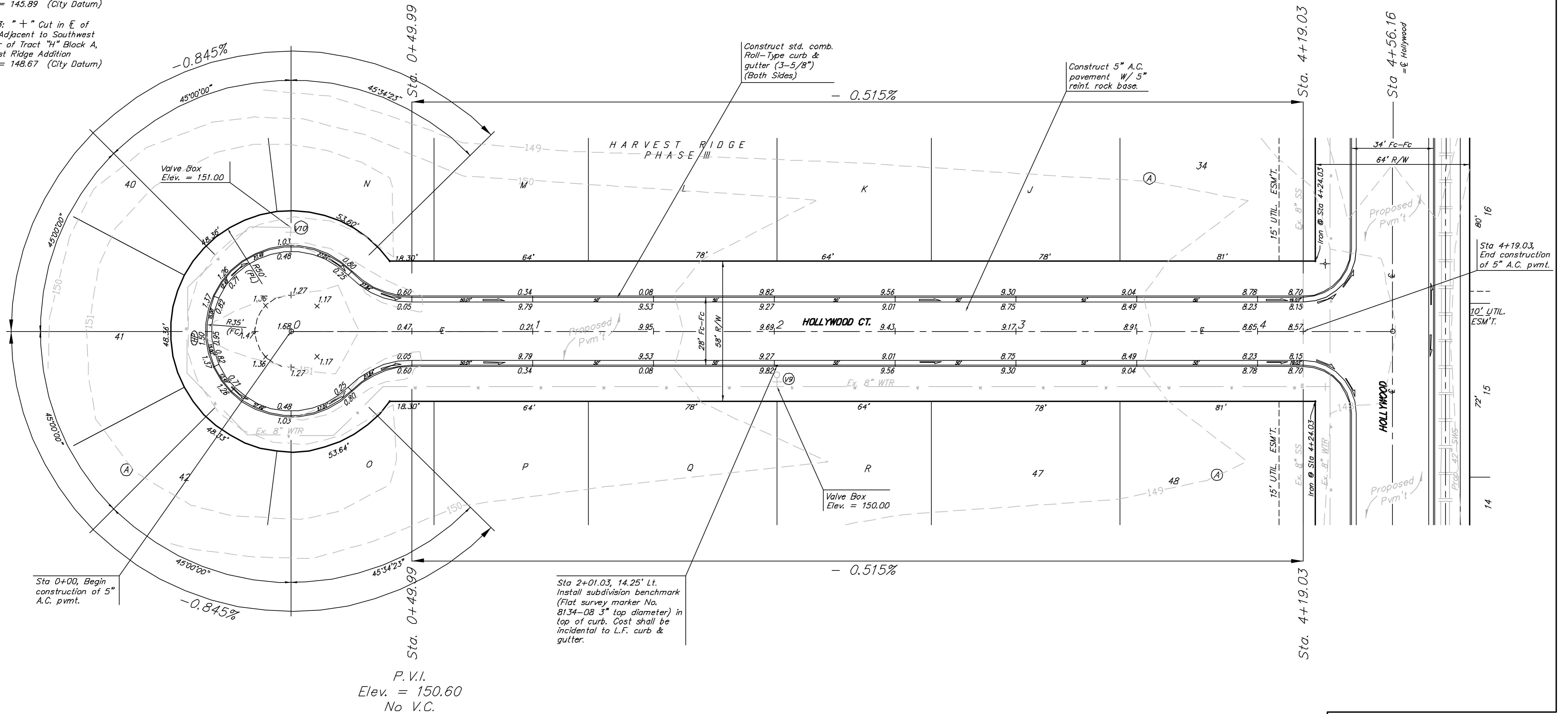
BM #1: "□" Cut in Top of Curb at Northwest Corner of Parking Lot, Lot 1, Block A, St. Peter the Apostle Catholic Church 2nd Addition.
Elev. = 150.34 (City Datum)

BM #2: "□" Cut in E of Curb Inlet Top Adjacent to Northeast Corner of Lot 17, Block C, Harvest Ridge Addition
Elev. = 145.89 (City Datum)

BM #3: "+" Cut in E of Curb Adjacent to Southwest Corner of Tract "H" Block A, Harvest Ridge Addition
Elev. = 148.67 (City Datum)



P.V.I.
Elev. = 150.60
No V.C.



Sta 0+00, Begin construction of 5" A.C. pvm't.

Sta 2+01.03, 14.25' Lt. Install subdivision benchmark (Flat survey marker No. 8134-08 3" top diameter) in top of curb. Cost shall be incidental to L.F. curb & gutter.

P.V.I.
Elev. = 150.60
No V.C.

VALVE LOCATION TABLE

VALVE NUMBER	BASELINE STATION	OFFSET DISTANCE	OFFSET DIRECTION
9	2+01.03	23	Rt.
10	-0+00.19	43	Lt.

Paving contractor will be responsible to operate all water valves on the project, in the presence of the inspector, to ensure accessibility to the valves, and that all valves are left in the "ON" position when the project is completed.

Note:
Contours shown represent the site after Mass Grading has been completed. Cross sections are based on the site after Mass grading

NOTE:
ROLL TYPE CURB & GUTTER TO BE CONSTRUCTED ON THE PAVEMENT SHOWN ON THIS SHEET. TOP OF CURB ELEVATIONS ARE GIVEN FOR FULL HEIGHT CURB.

	HARVEST RIDGE - PH. III	
	HOLLYWOOD CT. Sta. 0+00 to 4+19.03	
<small>Baughman Company, P.A. 313 Hills St. Woburn, MA 02471 P 516-237-7271 F 516-237-0198 ENGINEERING SURVEYING PLANNING LANDSCAPE ARCHITECTURE</small>		
PROJECT NUMBER 47283807	DESIGN MWS	DRAWN JRW
REVISIONS	APPROVED MWS	DATE 3.24.08
SCALE Noted		SHEET 10 OF 38
<small>E:\Harvest Ridge\Phase 3\STRV06-11.Strdwg 06-12-E710</small>		