

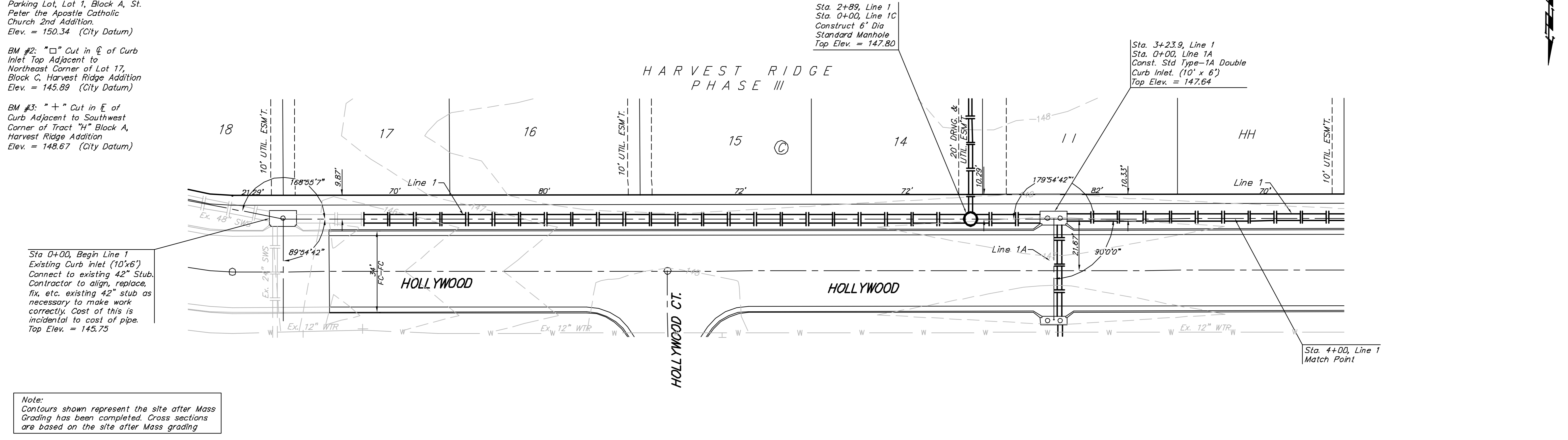
Benchmarks

BM #1: "□" Cut in Top of Curb at Northwest Corner of Parking Lot, Lot 1, Block A, St. Peter the Apostle Catholic Church 2nd Addition.
Elev. = 150.34 (City Datum)

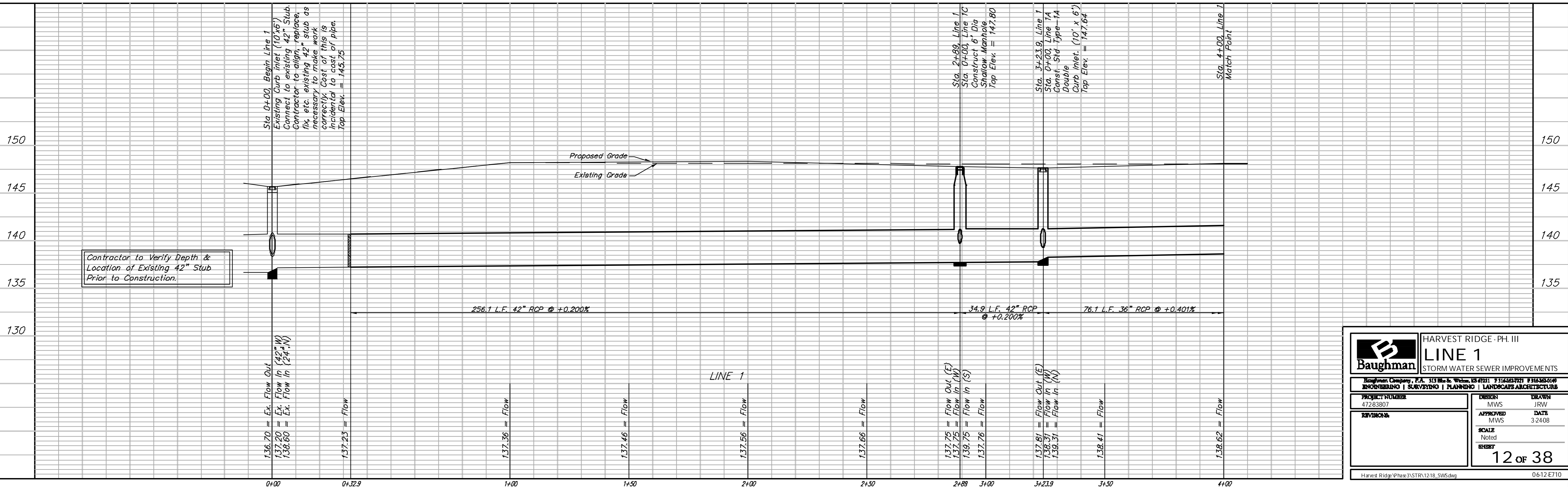
BM #2: "□" Cut in C of Curb Inlet Top Adjacent to Northeast Corner of Lot 17, Block C, Harvest Ridge Addition
Elev. = 145.89 (City Datum)

BM #3: "+" Cut in E of Curb Adjacent to Southwest Corner of Tract "H" Block A, Harvest Ridge Addition
Elev. = 148.67 (City Datum)

Scale: 1" = 20' Horizontal
1" = 5' Vertical
• = Iron



Note:
Contours shown represent the site after Mass Grading has been completed. Cross sections are based on the site after Mass grading



Contractor to Verify Depth & Location of Existing 42" Stub Prior to Construction.

		HARVEST RIDGE - PH. III	
		LINE 1 STORM WATER SEWER IMPROVEMENTS	
<small>Baughman Company, P.A. 313 Mills Dr., West Chester, OH 47381 P 513-423-7971 F 513-423-0196 ENGINEERING SURVEYING PLANNING LANDSCAPE ARCHITECTURE</small>			
PROJECT NUMBER 47283807 REVISES	DESIGN MWS APPROVED MWS	DRAWN JRW DATE 3-24-08	SCALE Noted SHEET 12 of 38
<small>Harvest Ridge/Phase3/STRV1218_SWS.dwg</small>			<small>0612E710</small>