

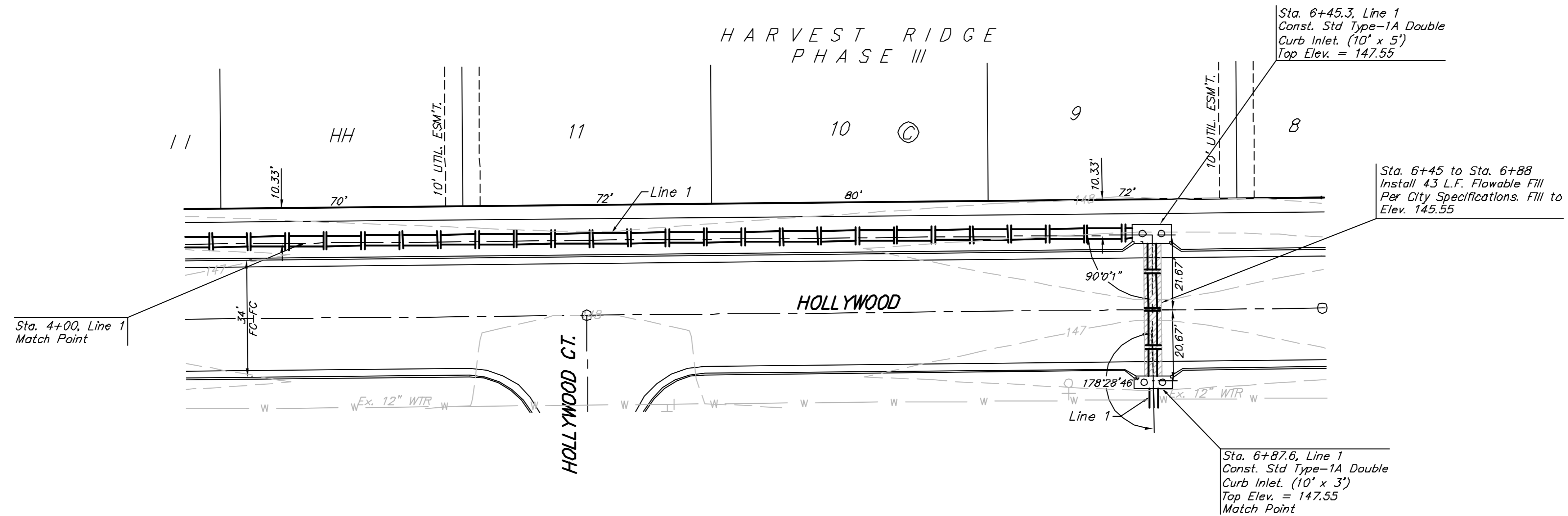
Benchmarks

BM #1: "□" Cut in Top of Curb at Northwest Corner of Parking Lot, Lot 1, Block A, St. Peter the Apostle Catholic Church 2nd Addition.
Elev. = 150.34 (City Datum)

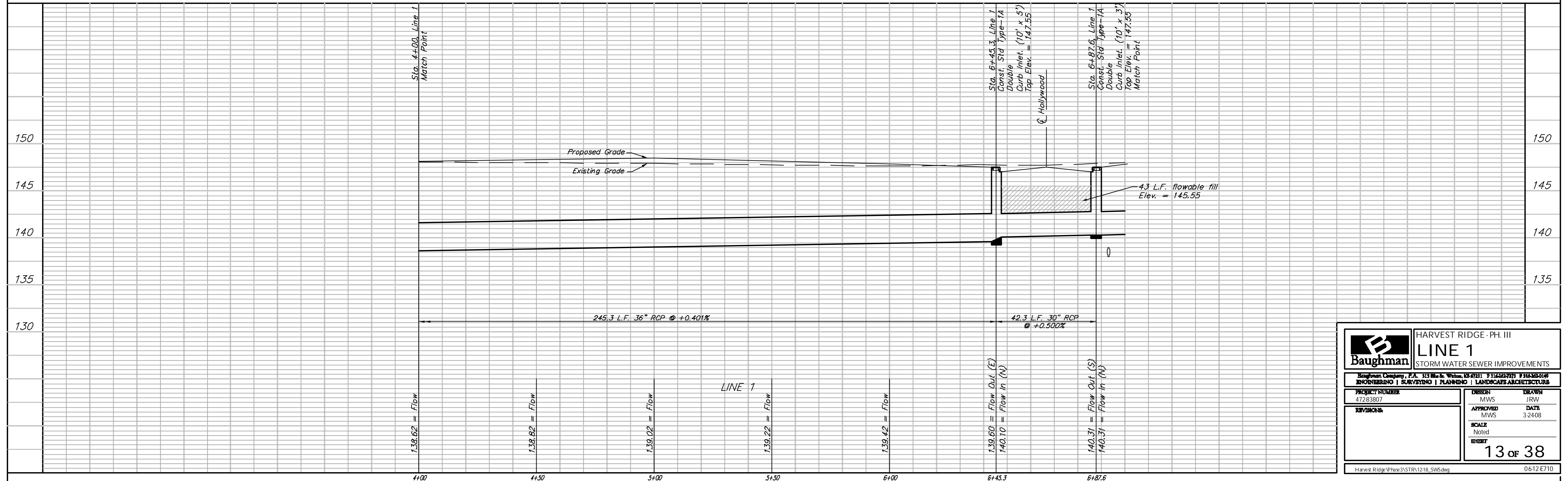
BM #2: "□" Cut in ϕ of Curb Inlet Top Adjacent to Northeast Corner of Lot 17, Block C, Harvest Ridge Addition
Elev. = 145.89 (City Datum)

BM #3: "+" Cut in \bar{E} of Curb Adjacent to Southwest Corner of Tract "H" Block A, Harvest Ridge Addition
Elev. = 148.67 (City Datum)

Scale: 1" = 20' Horizontal
1" = 5' Vertical
• = Iron



Note:
Contours shown represent the site after Mass Grading has been completed. Cross sections are based on the site after Mass grading



		HARVEST RIDGE - PH. III	
		LINE 1	
PROJECT NUMBER 47283807		DESIGN MWS	
APPROVED MWS		DRAWN JRW	
REVISIONS		DATE 3/24/08	
SCALE Noted		SHEET 13 of 38	
Harvest Ridge/Phase3/STRV1218_SWS.dwg		0612.E710	