

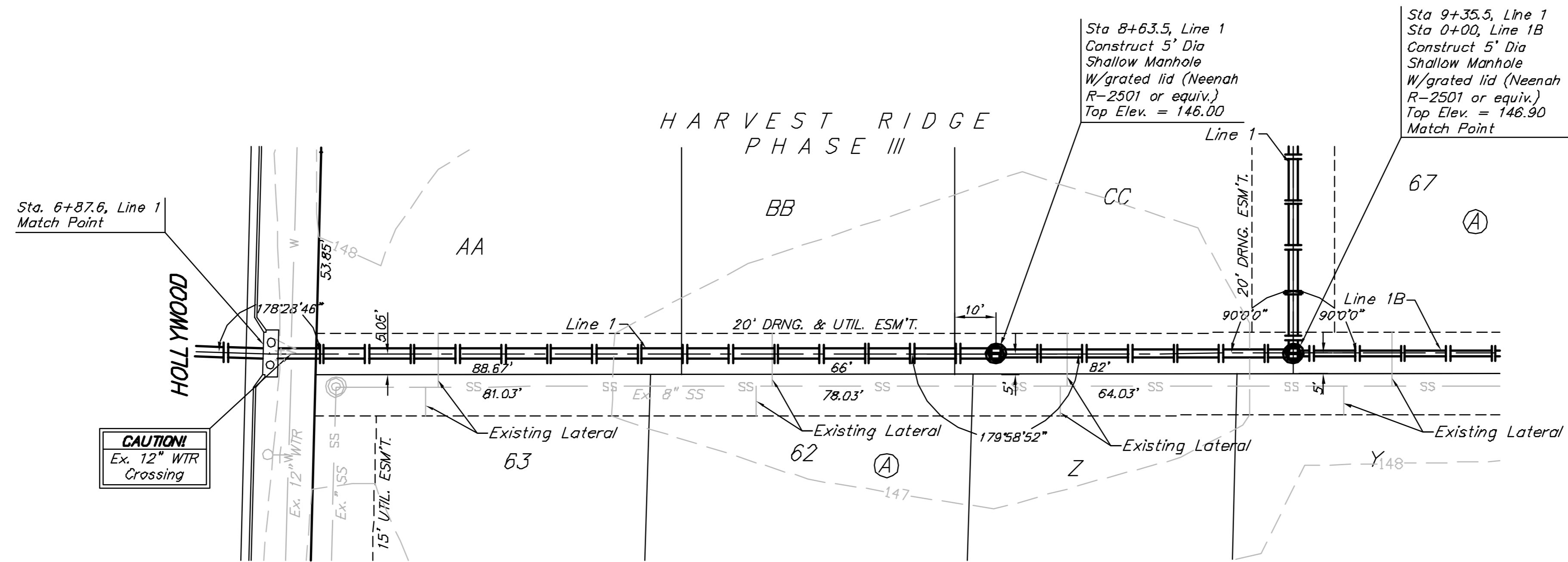
**Benchmarks**

BM #1: "□" Cut in Top of Curb at Northwest Corner of Parking Lot, Lot 1, Block A, St. Peter the Apostle Catholic Church 2nd Addition.  
Elev. = 150.34 (City Datum)

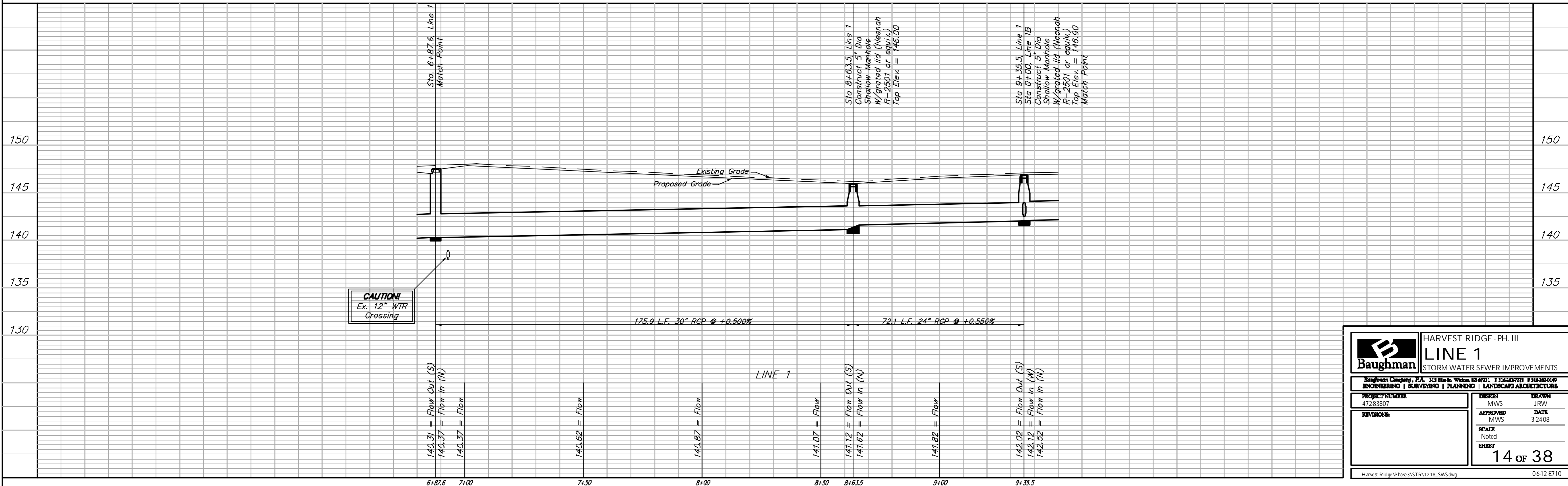
BM #2: "□" Cut in  $\bar{C}$  of Curb Inlet Top Adjacent to Northeast Corner of Lot 17, Block C, Harvest Ridge Addition  
Elev. = 145.89 (City Datum)

BM #3: "+" Cut in  $\bar{E}$  of Curb Adjacent to Southwest Corner of Tract "H" Block A, Harvest Ridge Addition  
Elev. = 148.67 (City Datum)

Scale: 1" = 20' Horizontal  
1" = 5' Vertical  
• = Iron



Note:  
Contours shown represent the site after Mass Grading has been completed. Cross sections are based on the site after Mass grading



<b>Baughman</b>		HARVEST RIDGE - PH. III	
		<b>LINE 1</b>	
		STORM WATER SEWER IMPROVEMENTS	
Baughman Company, P.A. 313 Mills, West Chester, OH 47311 P 513-423-7771 F 513-423-0196			
PROJECT NUMBER 47283807	DESIGN MWS	DRAWN JRW	DATE 3/24/08
REVISIONS	APPROVED MWS	SCALE Noted	SHEET 14 of 38
Harvest Ridge/Phase3/STRV1218_SWS.dwg			0612-E710