

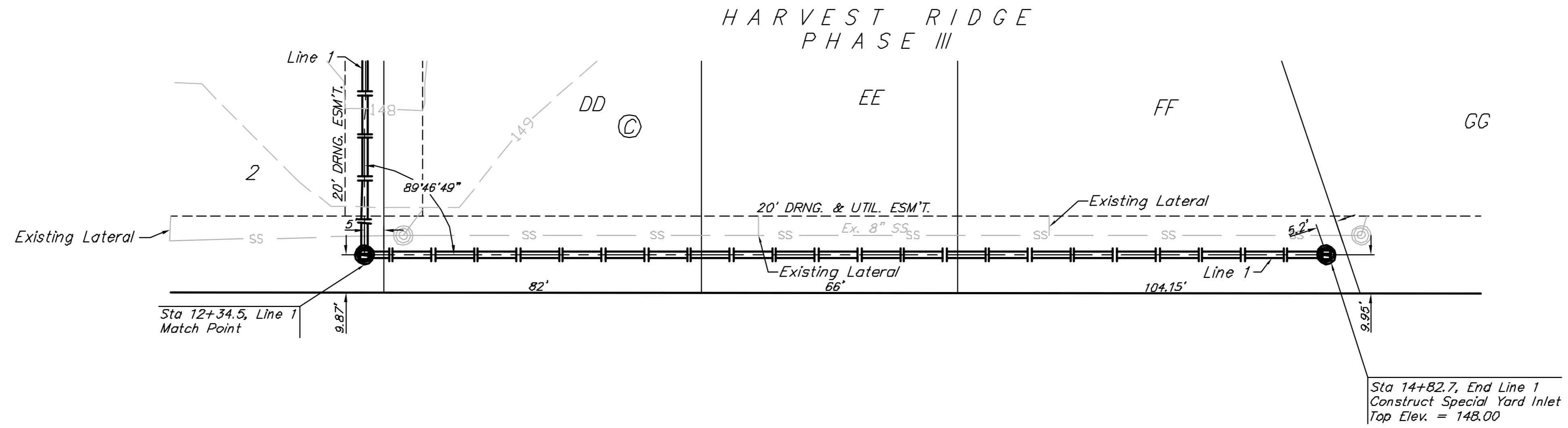
Benchmarks

BM #1: "□" Cut in Top of Curb at Northwest Corner of Parking Lot, Lot 1, Block A, St. Peter the Apostle Catholic Church 2nd Addition.
Elev. = 150.34 (City Datum)

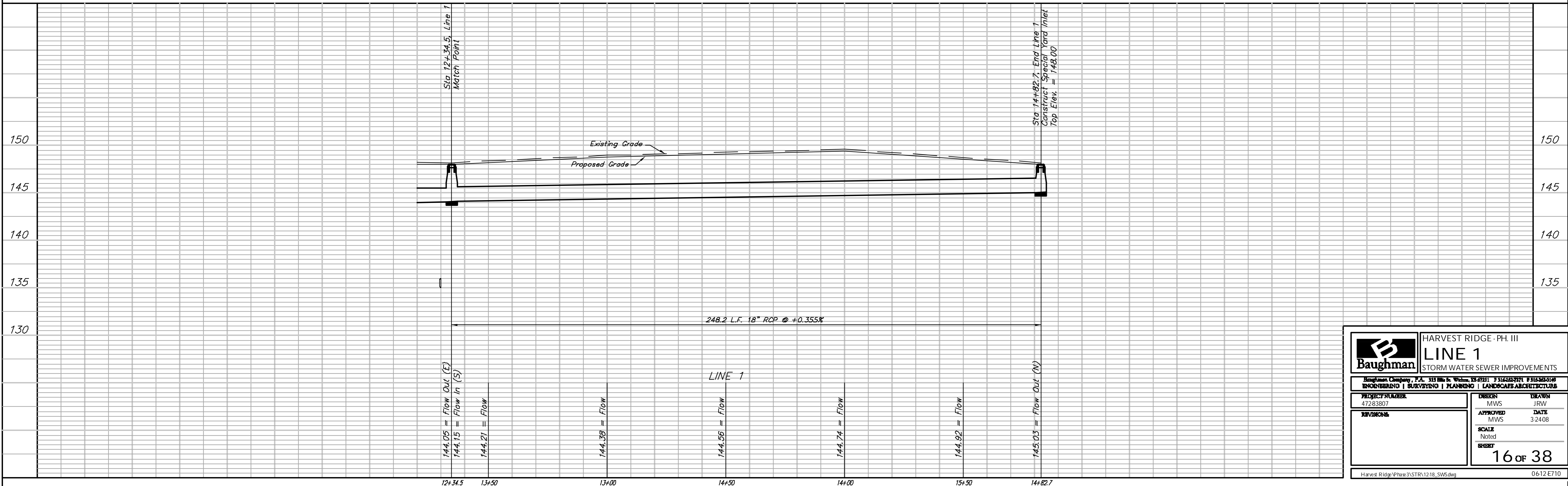
BM #2: "□" Cut in \bar{C} of Curb Inlet Top Adjacent to Northeast Corner of Lot 17, Block C, Harvest Ridge Addition
Elev. = 145.89 (City Datum)

BM #3: "+" Cut in \bar{E} of Curb Adjacent to Southwest Corner of Tract "H" Block A, Harvest Ridge Addition
Elev. = 148.67 (City Datum)

Scale: 1" = 20' Horizontal
1" = 5' Vertical
• = Iron



Note:
Contours shown represent the site after Mass Grading has been completed. Cross sections are based on the site after Mass grading



		HARVEST RIDGE - PH. III	
		LINE 1	
STORM WATER SEWER IMPROVEMENTS			
Baughman Company, P.A. 333 Billie St. Wexford, PA 15084-1001 P: 724-263-7771 F: 724-263-0100			
ENGINEERING SURVEYING PLANNING LANDSCAPE ARCHITECTURE			
PROJECT NUMBER 47283807	DESIGN MWS	DRAWN JRW	DATE 3.24.08
DIVISIONS	APPROVED MWS	SCALE Noted	Sheet 16 of 38
Harvest Ridge/Phase3/STR1218_SWS.dwg			06-12-E710