

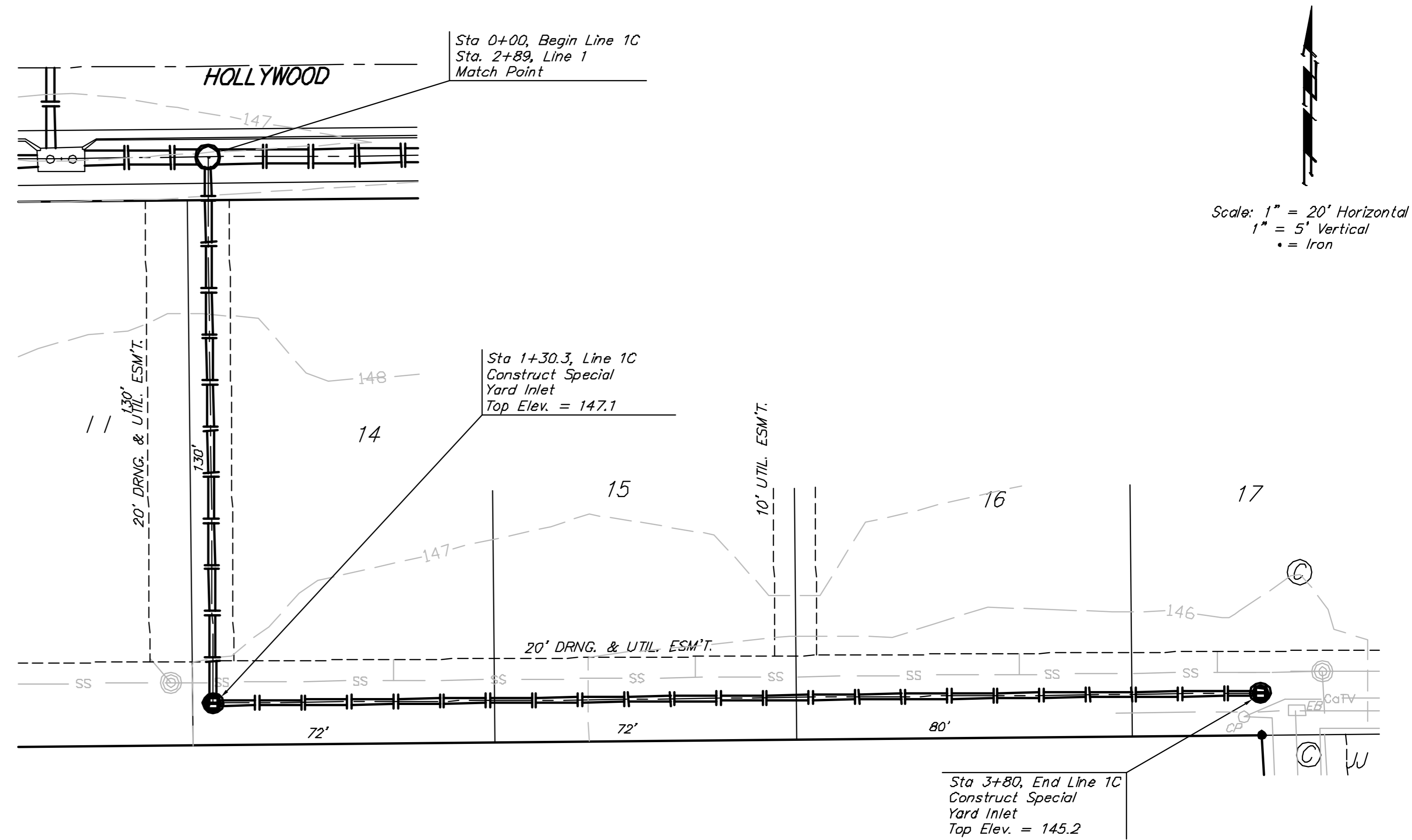
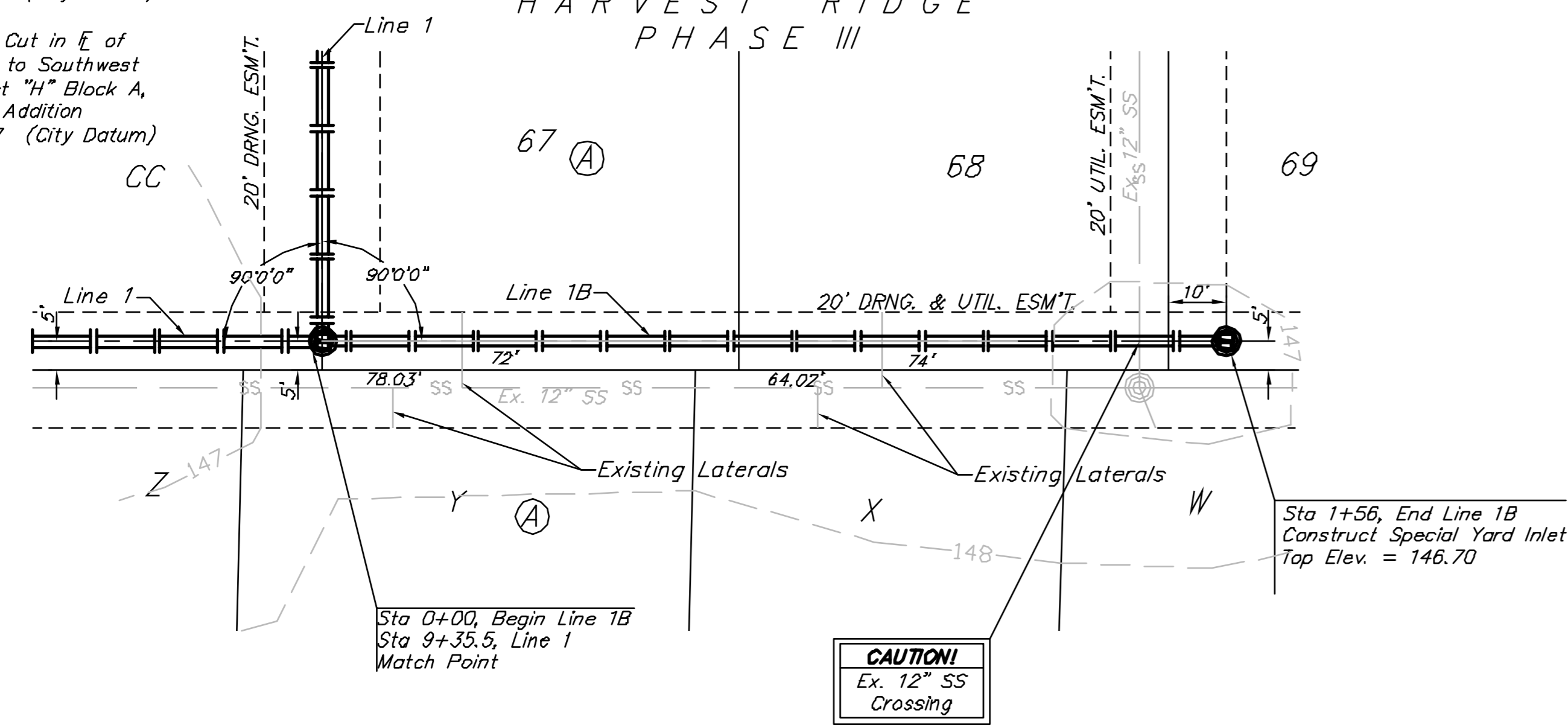
Benchmarks

BM #1: "□" Cut in Top of Curb at Northwest Corner of Parking Lot, Lot 1, Block A, St. Peter the Apostle Catholic Church 2nd Addition. Elev. = 150.34 (City Datum)

BM #2: "□" Cut in \odot of Curb Inlet Top Adjacent to Northeast Corner of Lot 17, Block C, Harvest Ridge Addition. Elev. = 145.89 (City Datum)

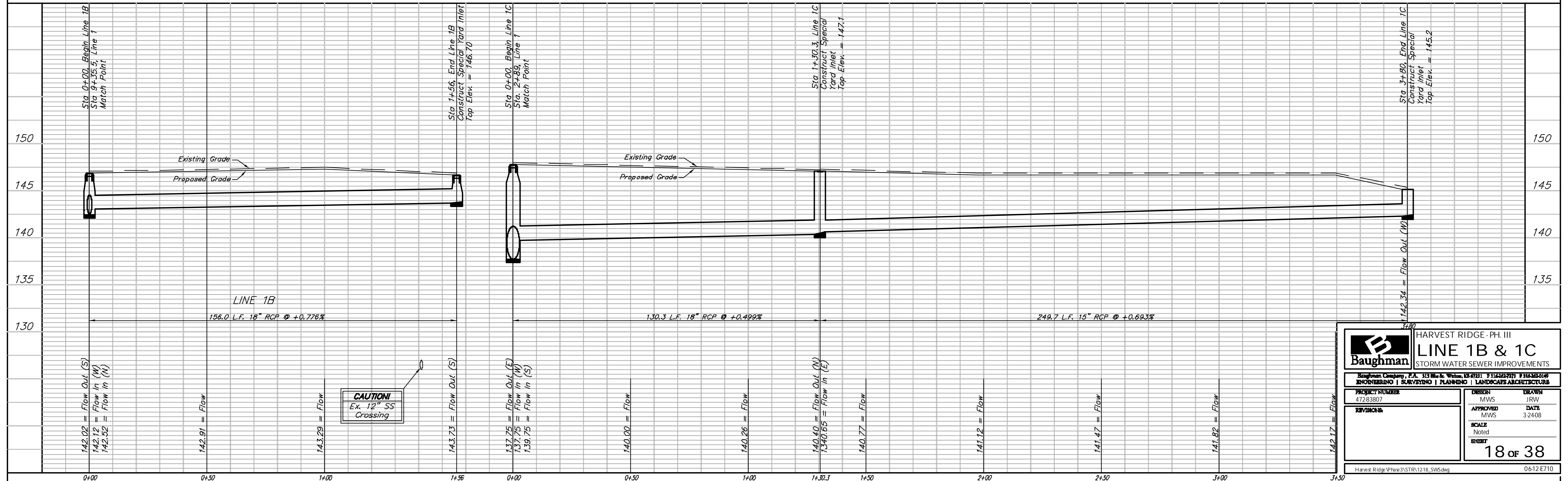
BM #3: "+" Cut in \odot of Curb Adjacent to Southwest Corner of Tract "H" Block A, Harvest Ridge Addition. Elev. = 148.67 (City Datum)

Scale: 1" = 20' Horizontal
1" = 5' Vertical
• = Iron



Scale: 1" = 20' Horizontal
1" = 5' Vertical
• = Iron

Note: Contours shown represent the site after Mass Grading has been completed. Cross sections are based on the site after Mass grading



		HARVEST RIDGE - PH. III	
		LINE 1B & 1C	
STORM WATER SEWER IMPROVEMENTS			
Baughman Company, P.A. 313 Mill St., West Chester, OH 47311 P 513-333-7771 F 513-333-0198			
PROJECT NUMBER 47283807		DESIGN MWS	DRAWN JRW
APPROVED MWS		DATE 3-24-08	
SCALE Noted		SHEET 18 of 38	
Harvest Ridge/Phase3/STR1218_SWS.dwg		0612E710	