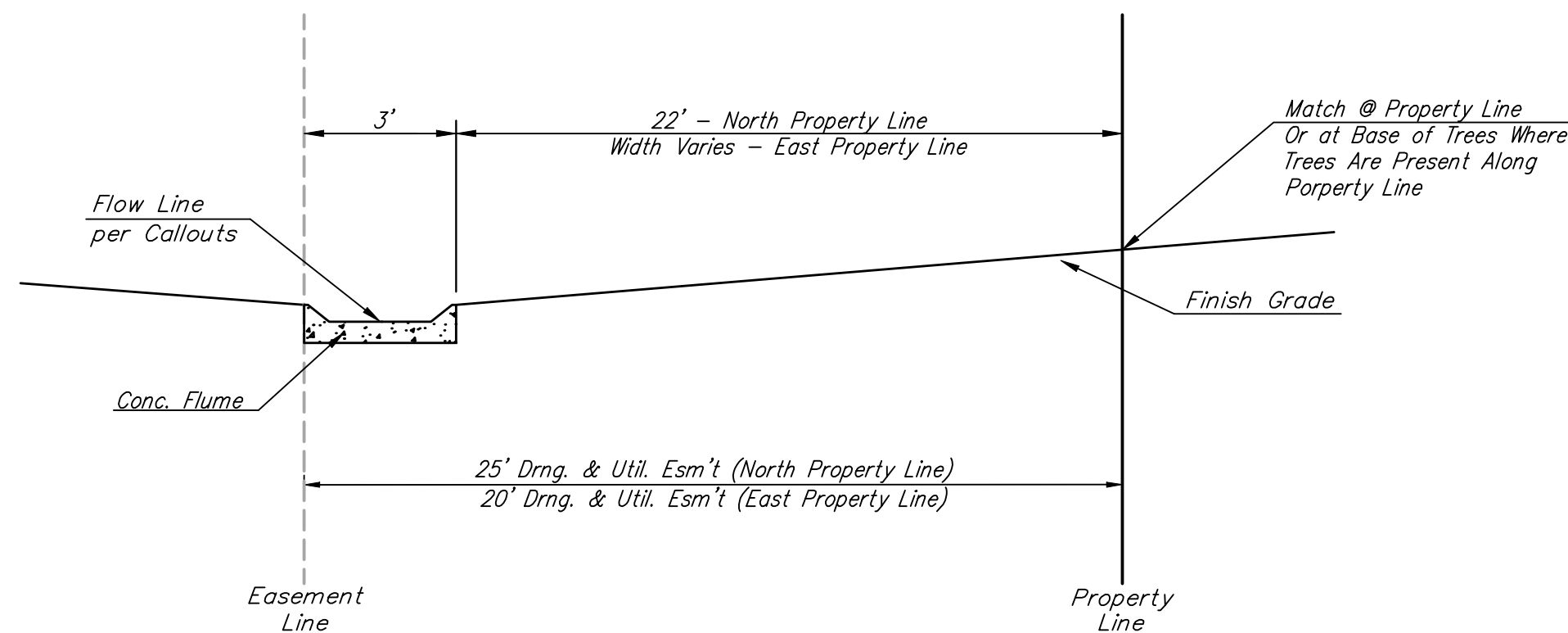
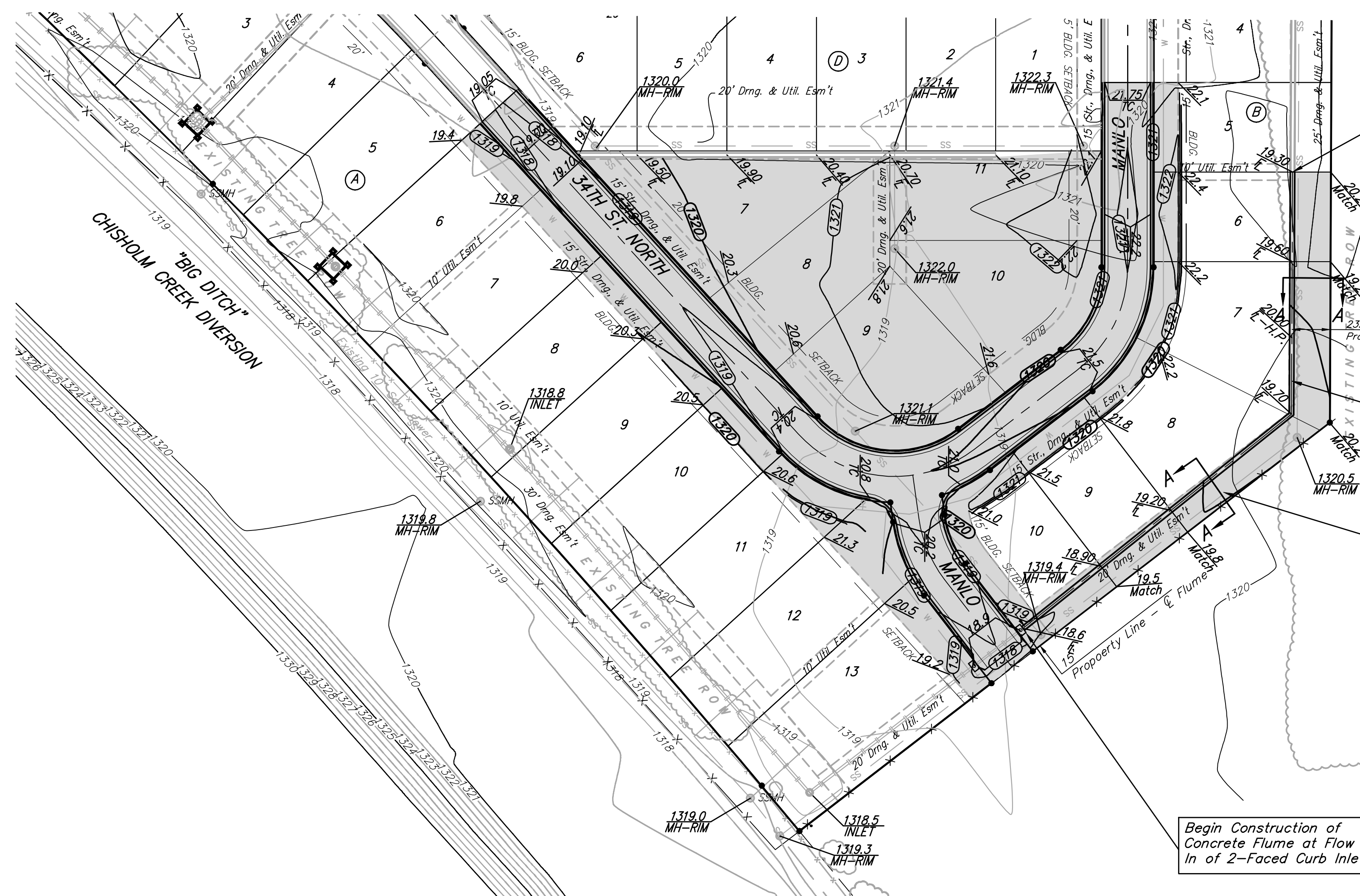


CONCRETE FLUME
TYPICAL DETAIL



SECTION A-A

Scale: 1" = 50'



End Construction of Concrete Flume at End of Existing Flume

Construct 360 L.F. Concrete Flume. (See Detail, This Sheet.)

Grade Easement per Section A-A. See Detail, This Sheet.

Begin Construction of Concrete Flume at Flow In of 2-Faced Curb Inlet.

UNPLATTED

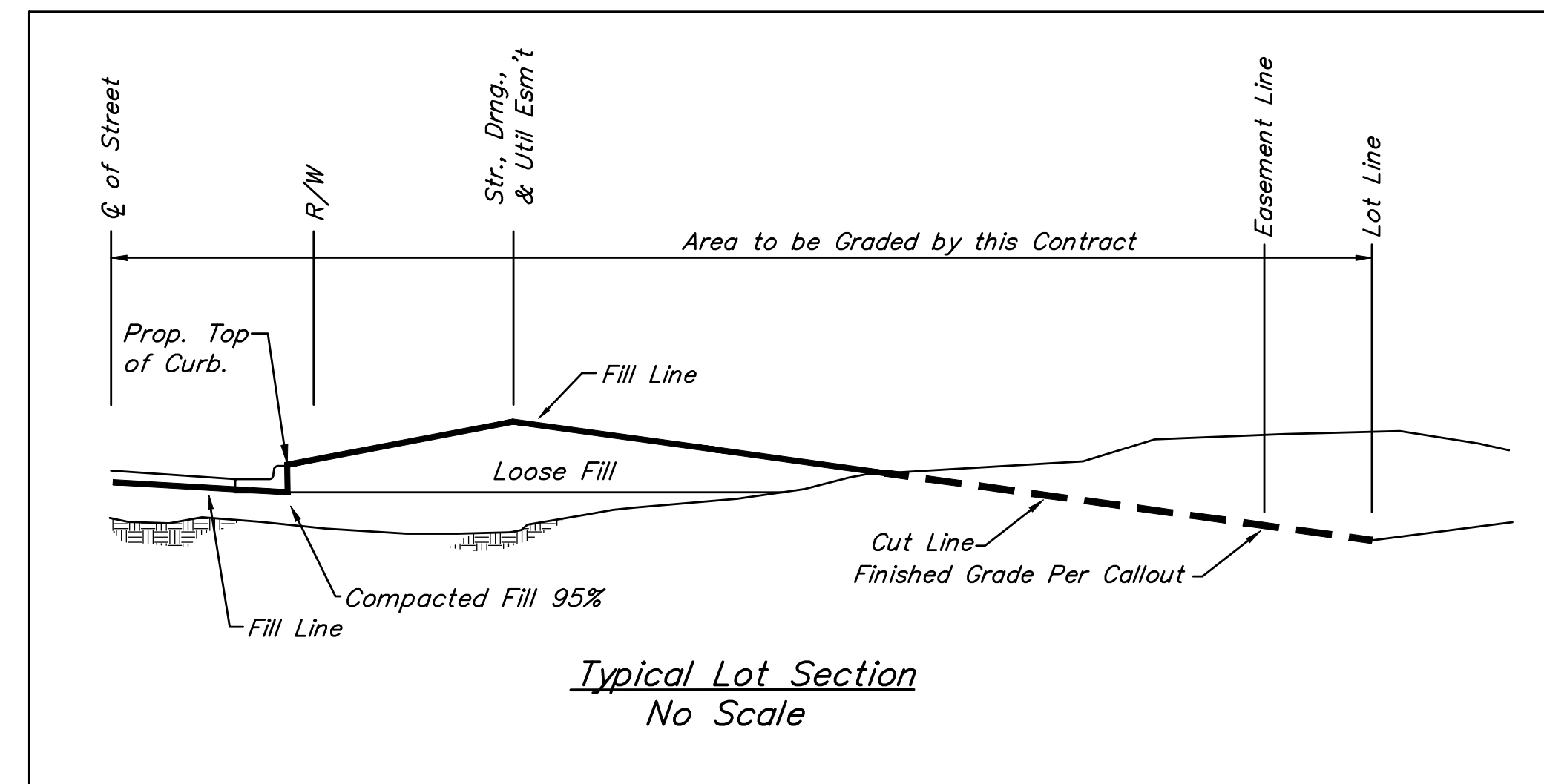
EARTH WORK TOTALS (UNADJUSTED)

	Excavation	Compacted Fill	Loose Fill
Mass Grading	29	-	2114
From Stockpile	3,320	-	-
Street R/W's & Str Esm't's	369	558	846
Total	3718	558	2960

Earthwork quantities are for reference only. All costs associated with earthwork fill, compaction, and mass grading shall be included in bid items "Excavation" and "Compacted Fill" No additional payments or change orders for earthwork will be accepted

- Contractor to strip top 3" of soil within street R/W before mass grading and stockpile.
- Compaction of 95% Standard Proctor Density shall be obtained in all street R/W's, 90% Standard Proctor Density in all other areas.
- It shall be the Contractor's responsibility to protect the sanitary sewer, water distribution system, & storm water sewer during mass grading. Any damage done to these systems by Contractor or subcontractor shall be repaired at no additional cost to the project.
- All areas disturbed during construction not under proposed pavement are to be seeded as follows:
Seed: - Rye Grass (PLS) - 5#/1000 Sq. Ft. and Kansas Premium Fescue Blend - 5#/1000 Sq. Ft. Cost of seeding shall be incidental to "Project Seeding".

NOTE:
When Trees Are Present Along Rear Lot Line, Grade Shall Match At Trunk Line And Trees Shall Not Be Disturbed. Any Trimming Of Trees Shall Be Approved By The Engineer And Owner.



Baughman Mesa Verde Addition- Phase I
Mass Grading Plan
Street Paving Improvements

Baughman Company, P.A. 315 Ellis St. Wichita, KS 67211 F 316262-7271 F 316262-0149
ENGINEERING | SURVEYING | PLANNING | LANDSCAPE ARCHITECTURE

PROJECT NUMBER 47284482	DESIGN NBW/JAK	DRAWN JAK
REVISIONS:	APPROVED	DATE 5/13/08
SCALE Noted		7 OF 16
SHEET		

Mesa Verde Phase 2 Mass & Erosion 07-11-E995