

WL Sta.	Service Connection*	Address
0+23.07	1" Long Service	3860 Pawnee St.
0+87.64	1" Short Service	3810 Pawnee Ct.
1+38.69	1" Long Service	3852 Pawnee St.
1+58.64	1" Long Service	3848 Pawnee Ct.
2+27.16	1" Long Service	3844 Pawnee Ct.
2+68.58	1" Short Service	3814 Pawnee Ct.
3+04.37	1" Short Service	3828 Pawnee Ct.
3+42.76	1" Short Service	3832 Pawnee Ct.
3+76.01	1" Short Service	3836 Pawnee Ct.
4+25.24	1" Short Service	3840 Pawnee Ct.

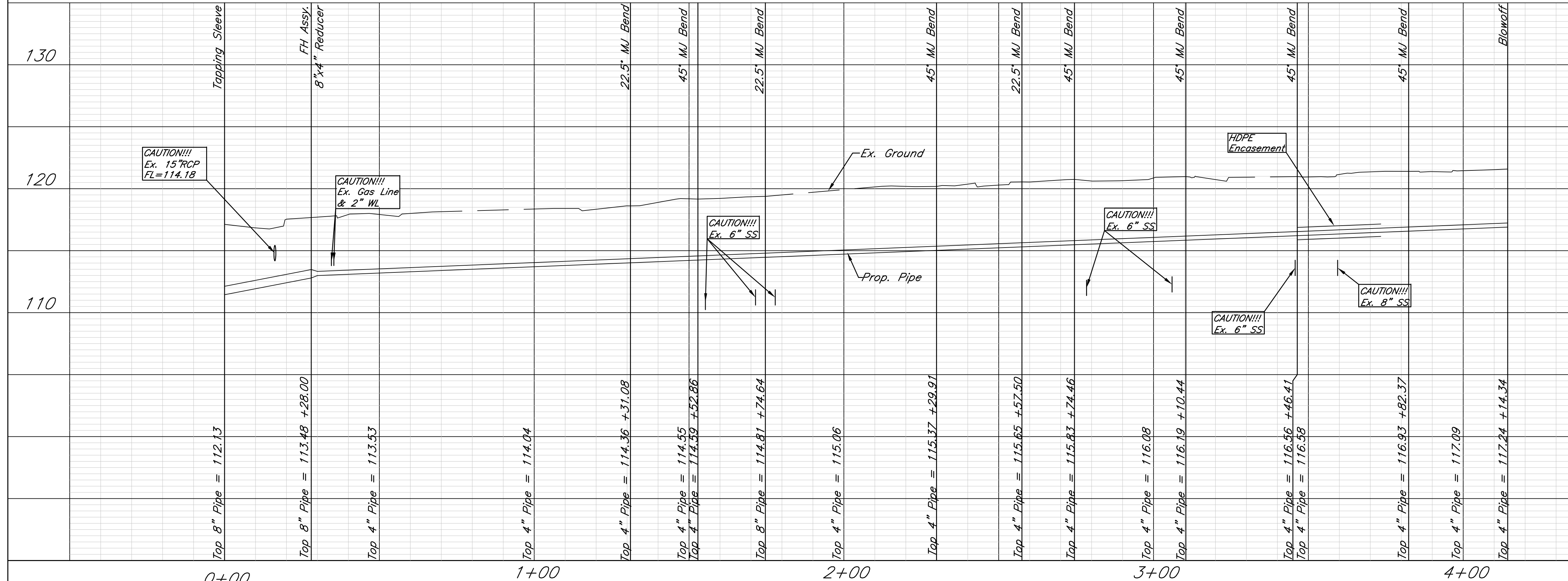
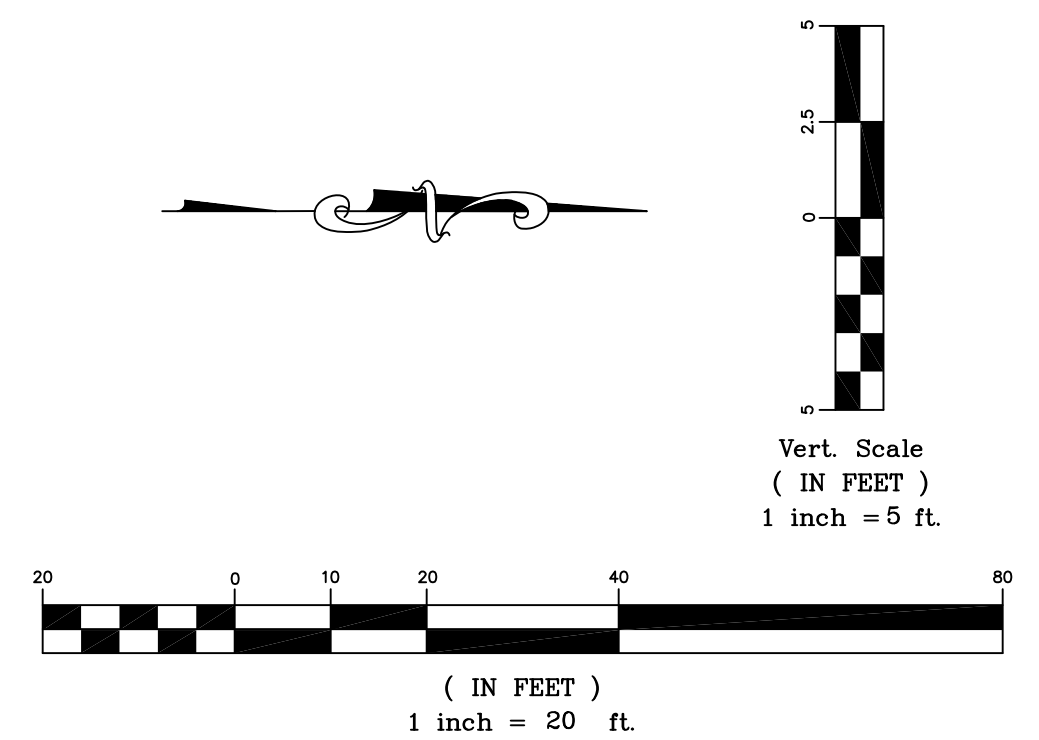
*Service to Include 1" Service Line with Meter. See Sheet 6 for Service details.

Benchmark
 "□" cut West of Northwest
 Return on Pawnee and Pawnee Ct.
 Elev. = 117.37 (City Datum)

Baseline:
 Centerline of Pawnee Ave. w/
 intersection of Pawnee and
 Pawnee Court being Station 10+00.

Driveway Restoration Note:
 Remove and replace exist. Concrete Driveways as
 required for WL installation. Concrete to be replace
 to existing contraction joints.

See sheet 3 for additional construction details.



Water Line to Serve
Pawnee Ct.
 Wichita, KS

PROJECT NUMBER 448-90215		SHEET 2	
KEM NO. 06143	FILE water line	DATE 9/2006	OF 6
DESIGN PB	DRAWN JO	REVISED 11/15/2006	

516 S. Market, Wichita, KS 67202 316/264-0242