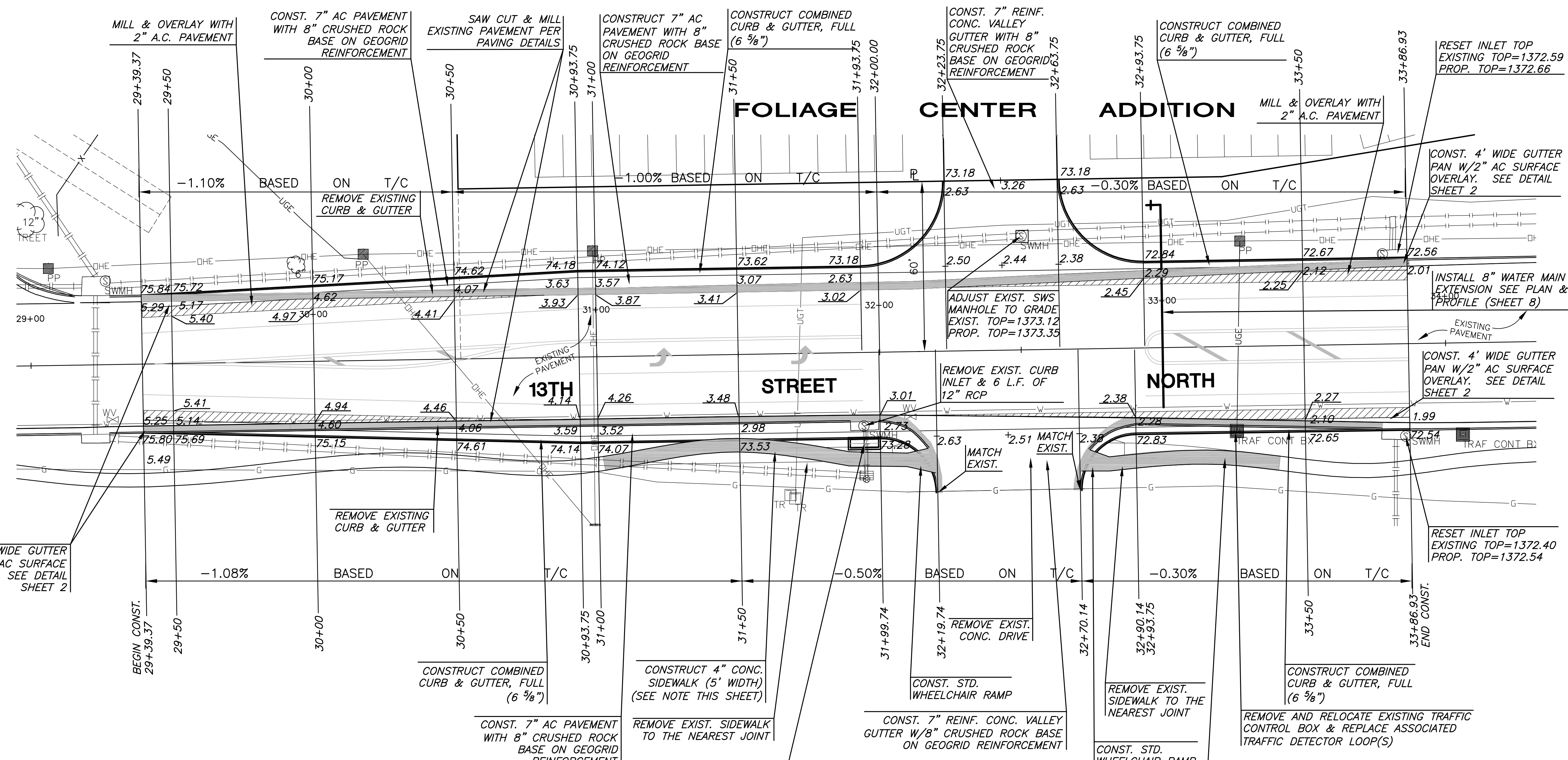


**PAVING AND INCIDENTAL DRAINAGE PLANS FOR  
FOLIAGE CENTER ADDITION  
13TH STREET LEFT TURN LANES**



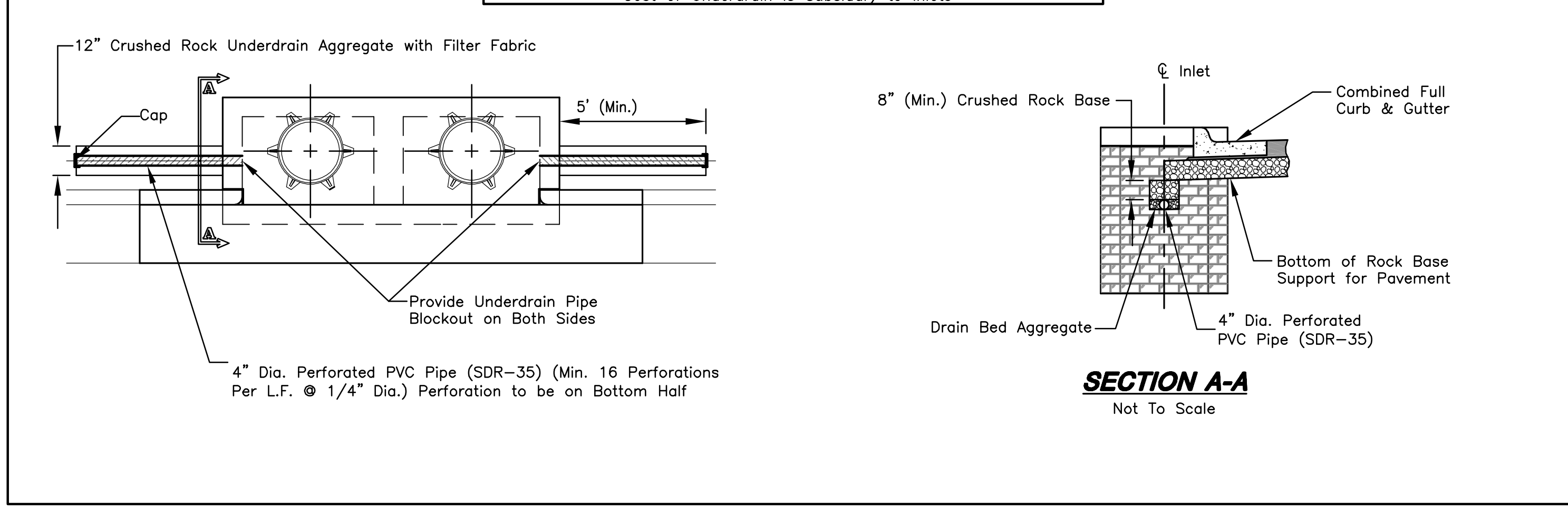
CONST. 4' WIDE GUTTER PAN W/2" AC SURFACE OVERLAY. SEE DETAIL SHEET 2

RESET INLET TOP EXISTING TOP=1372.59 PROP. TOP=1372.66

CONST. 4' WIDE GUTTER PAN W/2" AC SURFACE OVERLAY. SEE DETAIL SHEET 2

RESET INLET TOP EXISTING TOP=1372.40 PROP. TOP=1372.54

**PAVEMENT UNDERDRAIN DETAILS**  
Cost of Underdrain is Subsidiary to Inlets



STA. 31+94.1' 32.2 RT.  
CONST. TYPE 1 INLET  
OVER EXIST. 12" RCP  
PROP. INLET TOP=1373.89  
FL=1370.32  
PROVIDE SEDIMENT BARRIER  
& PAVEMENT UNDERDRAIN  
(SEE DETAILS THIS SHEET)

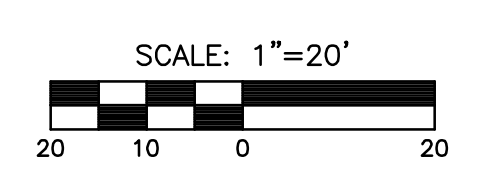
**LEGEND**

- = REMOVAL
- = MILL & OVERLAY

**SEEDING NOTE:**

CONTRACTOR SHALL INSTALL 362 SY. OF KANSAS PREMIUM BLEND FESCUE SOD AVAILABLE FROM CRAMNER GRASS FARMING INC, MAIZE, KS (316)722-7230 OR APPROVED EQUAL FROM SOUTH BACK OF CURB TO SOUTH R.O.W. CONTRACTOR SHALL WATER IN THOROUGHLY & MAINTAIN PER C.O.W. SPECIFICATIONS. DISTURBED AREAS NORTH OF 13TH STREET SHALL BE SEEDED W/PERENNIAL RYE @ 200 LBS/AC.

**NOTE:**  
SIDEWALK ALIGNMENT SUBJECT TO CHANGE. FINAL ALIGNMENT TO BE APPROVED BY MKEC'S LANDSCAPE ARCHITECT PRIOR TO CONSTRUCTION.



**PAVING PLAN**  
SHEET TITLE  
04274  
PROJECT NUMBER

**SRS**  
DESIGN BY  
**JWC**  
DRAWN BY  
**DFL**  
CHECKED BY

ISSUED  
**May 2008**  
REVISED

SHEET NO.  
**5 of 23**